

District Population Analysis with County Subtotals
SENATE DISTRICTS - PLANS2148

Total State Population	29,145,505
Total Districts Required	31
Ideal District Population	940,178
Unassigned Population	27,245,522
Districts in Plan	2
Unassigned Geography	Yes
Districts Contiguous	Yes

	Population	-----Deviation-----	
		Total	Percent
Plan Overall Range		4,225	0.45%
Smallest District (18)	947,879	7,701	0.82%
Largest District (4)	952,104	11,926	1.27%
Average (mean)	949,992	9,814	1.05%

PLANS2148

District Population Analysis with County Subtotals

SENATE DISTRICTS - PLANS2148

	Deviation		Total	Anglo	Non-Anglo	Asian	Black	Hispanic	B+H	%Anglo	%Non-Anglo	%Asian	%Black	%Hispanic	%B+H
DISTRICT 4	11,926	Total:	952,104	490,381	461,723	43,006	128,738	272,806	394,970	51.5	48.5	4.5	13.5	28.7	41.5
	1.27 %	VAP:	702,125	387,949	314,176	30,894	89,402	178,783	265,098	55.3	44.7	4.4	12.7	25.5	37.8
Chambers (100%)			46,571	29,858	16,713	879	3,763	10,952	14,512	64.1	35.9	1.9	8.1	23.5	31.2
Galveston (1%)			2,770	2,289	481	38	37	321	349	82.6	17.4	1.4	1.3	11.6	12.6
Harris (7%)			327,530	140,266	187,264	15,183	67,803	100,264	164,830	42.8	57.2	4.6	20.7	30.6	50.3
Jefferson (24%)			61,123	19,599	41,524	2,153	18,769	20,120	38,513	32.1	67.9	3.5	30.7	32.9	63.0
Montgomery (83%)			514,110	298,369	215,741	24,753	38,366	141,149	176,766	58.0	42.0	4.8	7.5	27.5	34.4
DISTRICT 18	7,701	Total:	947,879	378,824	569,055	121,737	153,123	287,018	432,248	40.0	60.0	12.8	16.2	30.3	45.6
	0.82 %	VAP:	709,279	307,704	401,575	89,018	107,455	196,194	300,125	43.4	56.6	12.6	15.1	27.7	42.3
Aransas (100%)			23,830	15,816	8,014	655	394	6,158	6,486	66.4	33.6	2.7	1.7	25.8	27.2
Austin (100%)			30,167	18,480	11,687	304	2,791	8,052	10,630	61.3	38.7	1.0	9.3	26.7	35.2
Burleson (100%)			17,642	11,258	6,384	118	2,145	3,712	5,737	63.8	36.2	0.7	12.2	21.0	32.5
Calhoun (100%)			20,106	8,374	11,732	1,169	534	9,858	10,271	41.6	58.4	5.8	2.7	49.0	51.1
De Witt (100%)			19,824	10,854	8,970	105	1,867	6,890	8,564	54.8	45.2	0.5	9.4	34.8	43.2
Fayette (100%)			24,435	17,041	7,394	129	1,722	5,216	6,785	69.7	30.3	0.5	7.0	21.3	27.8
Fort Bend (45%)			366,399	95,874	270,525	95,081	76,411	98,651	171,916	26.2	73.8	26.0	20.9	26.9	46.9
Goliad (100%)			7,012	4,246	2,766	60	349	2,288	2,569	60.6	39.4	0.9	5.0	32.6	36.6
Gonzales (100%)			19,653	8,159	11,494	122	1,391	9,897	11,074	41.5	58.5	0.6	7.1	50.4	56.3
Grimes (100%)			29,268	16,910	12,358	195	4,217	7,361	11,400	57.8	42.2	0.7	14.4	25.2	39.0
Harris (3%)			135,242	36,643	98,599	20,206	30,954	47,284	76,729	27.1	72.9	14.9	22.9	35.0	56.7
Lavaca (100%)			20,337	14,564	5,773	114	1,497	3,936	5,316	71.6	28.4	0.6	7.4	19.4	26.1
Lee (100%)			17,478	10,612	6,866	123	1,945	4,479	6,287	60.7	39.3	0.7	11.1	25.6	36.0
Montgomery (7%)			41,051	30,483	10,568	516	1,833	6,944	8,660	74.3	25.7	1.3	4.5	16.9	21.1
Refugio (100%)			6,741	2,864	3,877	61	534	3,306	3,735	42.5	57.5	0.9	7.9	49.0	55.4
Victoria (100%)			91,319	39,330	51,989	1,758	6,843	42,931	48,751	43.1	56.9	1.9	7.5	47.0	53.4
Waller (73%)			41,570	15,293	26,277	327	11,652	13,630	25,050	36.8	63.2	0.8	28.0	32.8	60.3
Washington (100%)			35,805	22,023	13,782	694	6,044	6,425	12,288	61.5	38.5	1.9	16.9	17.9	34.3

**Population and Voter Data
 with Voter Registration Comparison
 SENATE DISTRICTS - PLANS2148**

District	Deviation		Population								Total Voter Registration			Non-Suspense Voter Registration			
			Total	%Anglo	%Non-Anglo	%Asian	%Black	%Hispanic	%B+H	General Election	Turnout	Total	SSVR	TO/VR	Total	SSVR	TO/VR
4	11,926	Total:	952,104	51.5	48.5	4.5	13.5	28.7	41.5	2020	401,006	568,922	13.3 %	70.5 %	516,584	13.5 %	77.6 %
	1.27%	VAP:	702,125	55.3	44.7	4.4	12.7	25.5	37.8	2018	287,711	522,393	12.5 %	55.1 %	464,656	12.8 %	61.9 %
18	7,701	Total:	947,879	40.0	60.0	12.8	16.2	30.3	45.6	2020	394,817	564,915	18.8 %	69.9 %	521,240	18.7 %	75.7 %
	0.82%	VAP:	709,279	43.4	56.6	12.6	15.1	27.7	42.3	2018	282,324	517,282	18.7 %	54.6 %	471,512	18.7 %	59.9 %

For technical reasons, election results in Texas Legislative Council reports may vary slightly from the official election results. Complete official results for all elections are maintained by the Office of the Texas Secretary of State.
 SSVR = Spanish surname voter registration

Plan Fit Verification
SENATE DISTRICTS
PLANS2148 Compared with PLANS2130

The amendment fits into the base plan.

American Community Survey Special Tabulation
 Using Census and American Community Survey Data
SENATE DISTRICTS - PLANS2148

2020 Census			Special Tabulation of Citizen Voting Age Population (CVAP) from the 2017-2021 American Community Survey with Margins of Error												
			CVAP	Hispanic CVAP % Hispanic	Not Hispanic or Latino Citizen Voting Age Population (CVAP)										
District	Total	VAP			% Black Alone	% Black + White	% Black + American Indian	% White Alone	% American Indian Alone	% Asian Alone	% Native Hawaiian Alone	% American Indian + White	% Asian + White	% Remainder 2 or More Other	
4	952,104	702,125	610,195 (±10,078)	19.2 (±0.7)	11.8 (±0.6)	0.5 (±0.1)	0.0(±0.1)	64.5 (±0.8)	0.2 (±0.1)	2.6 (±0.3)	0.1 (±0.1)	0.5 (±0.1)	0.3 (±0.1)	0.2 (±0.1)	
18	947,879	709,279	616,550 (±10,190)	25.8 (±0.8)	14.7 (±0.7)	0.4 (±0.1)	0.1(±0.1)	48.3 (±0.6)	0.2 (±0.1)	9.7 (±0.7)	0.0 (±0.1)	0.5 (±0.1)	0.3 (±0.1)	0.1 (±0.1)	

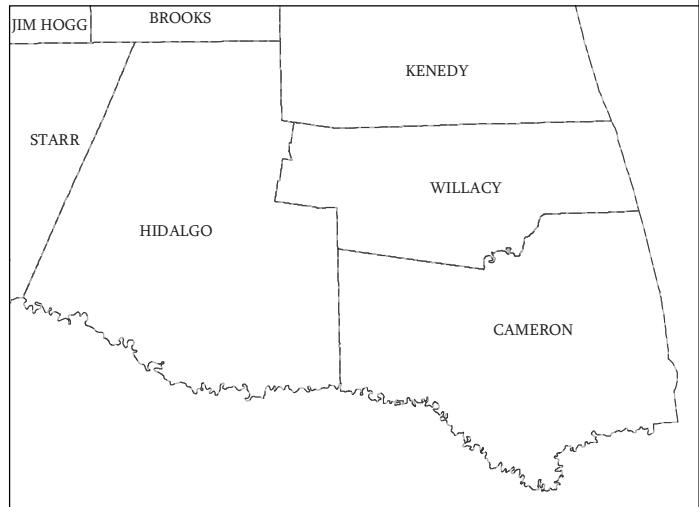
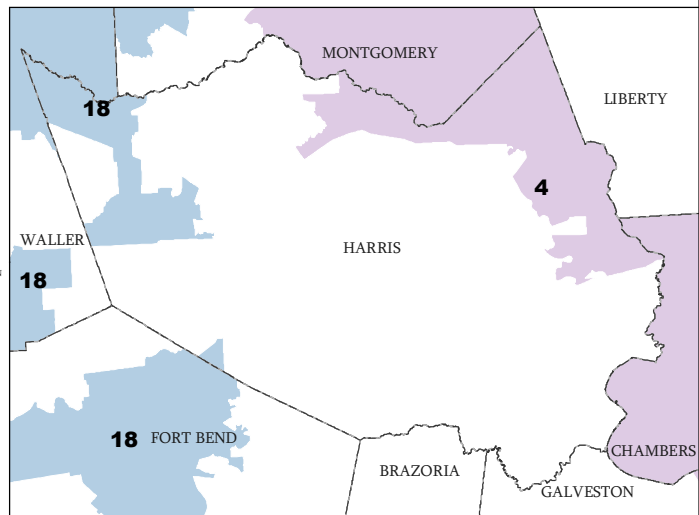
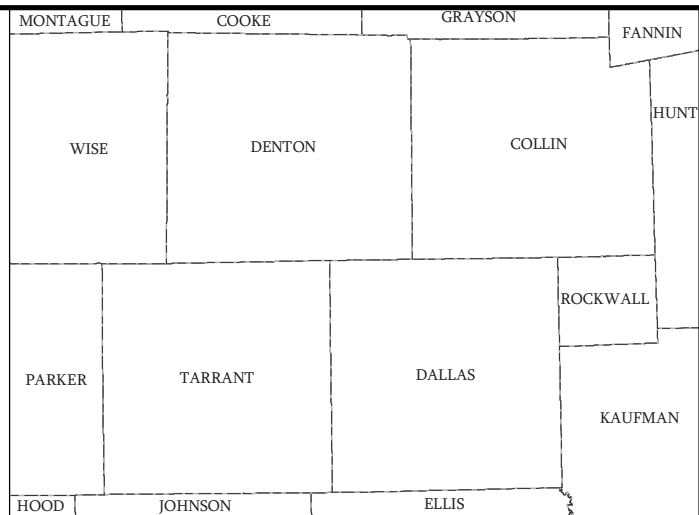
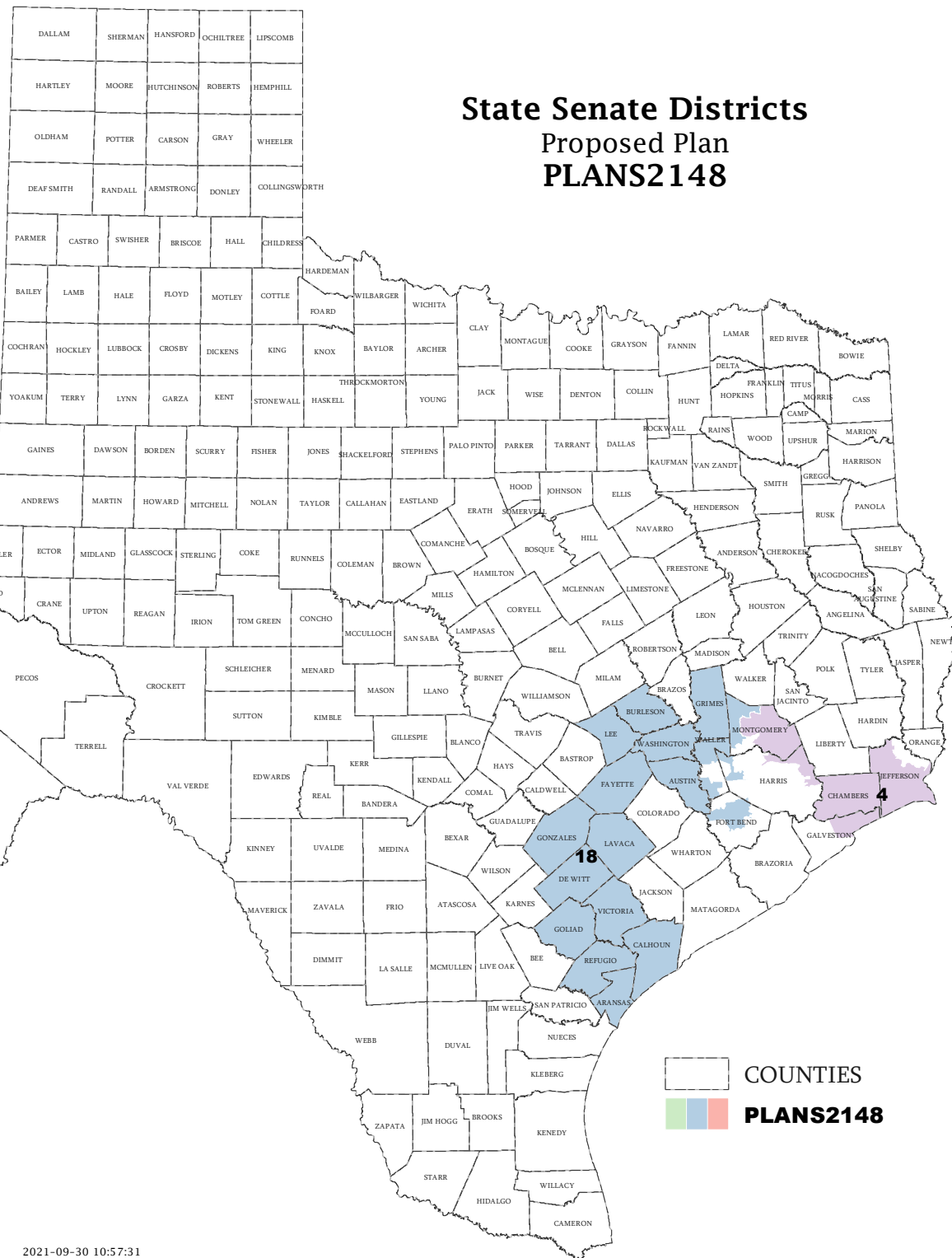
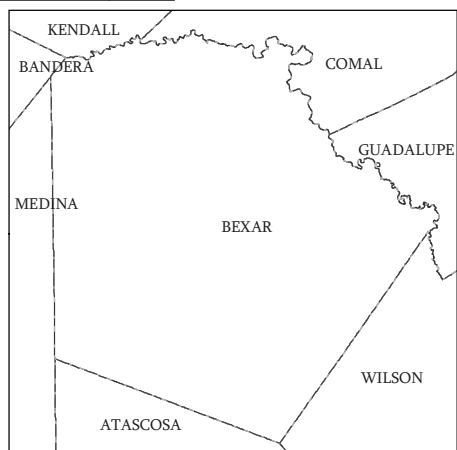
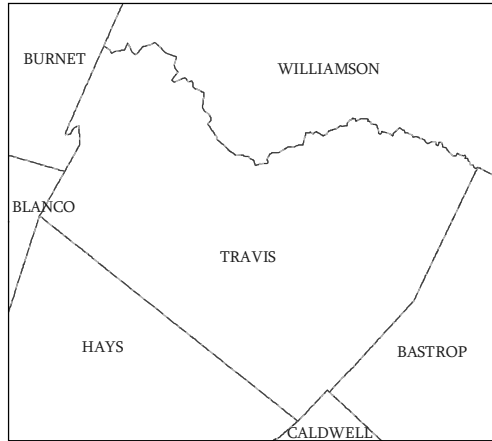
The American Community Survey provided estimated citizen voting age population (CVAP) data at the block group level in a Special Tabulation. Because the MOE can only be calculated using whole block groups, all block groups with more than 50% of the population in a district are included in the analysis. The Red-118 report provides a summary of the block groups used in the analysis.
 The percent for each CVAP population category is that group's CVAP divided by the CVAP total.
 Numbers in parentheses are margins of error at 90% confidence level.

Incumbents by District

SENATE DISTRICTS - PLANS2148

District	Incumbents
4	Creighton - R
18	Kolkhorst - R

State Senate Districts Proposed Plan PLANS2148



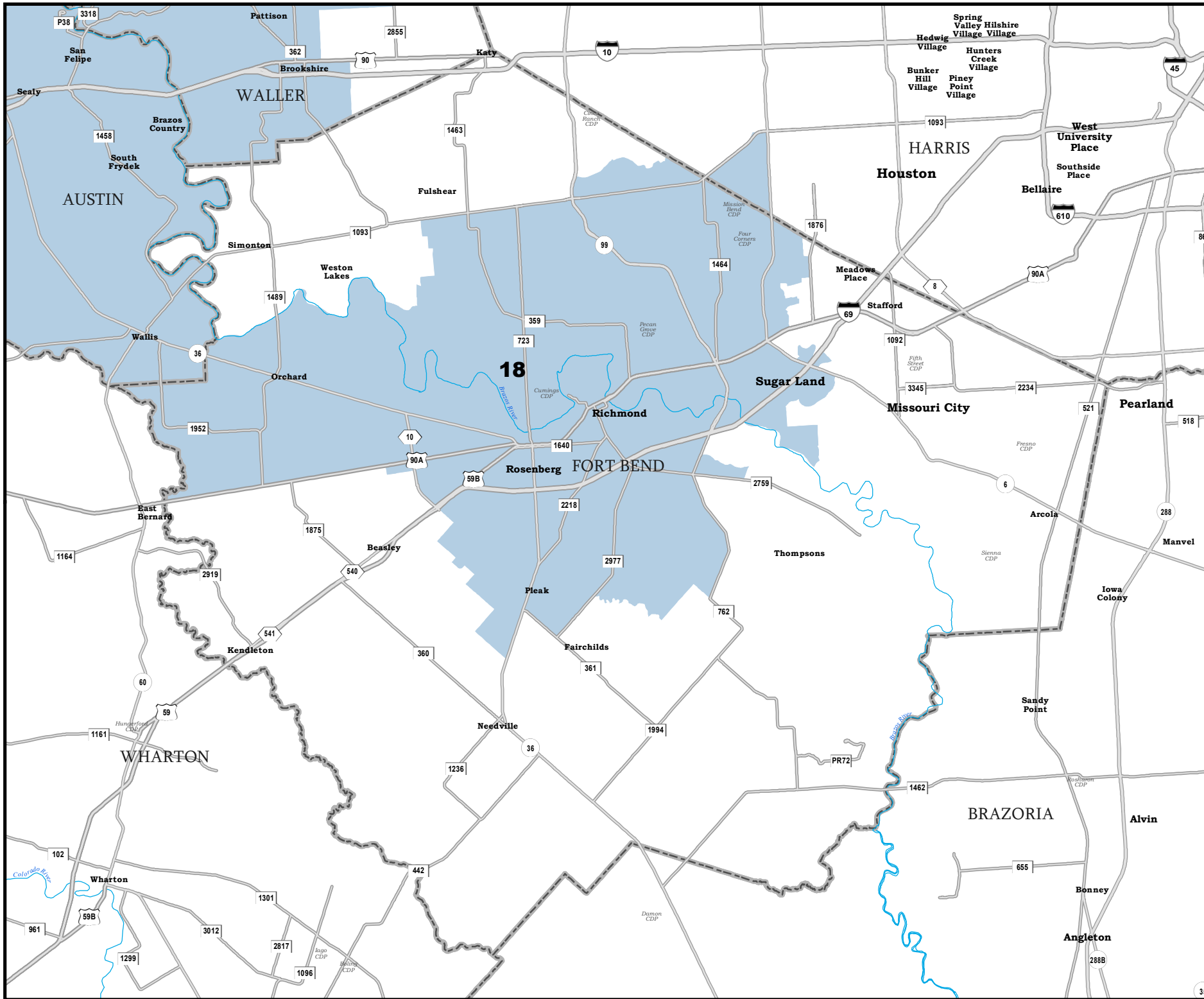
COUNTIES

 PLANS2148

Map ID 5900
09/30/21 11:02:53

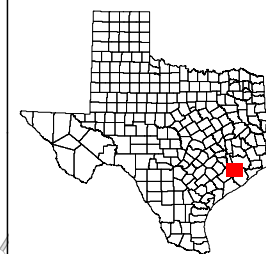


48469
2020 Census
PLANS2148 2021-09-30 10:57:31



FORT BEND COUNTY

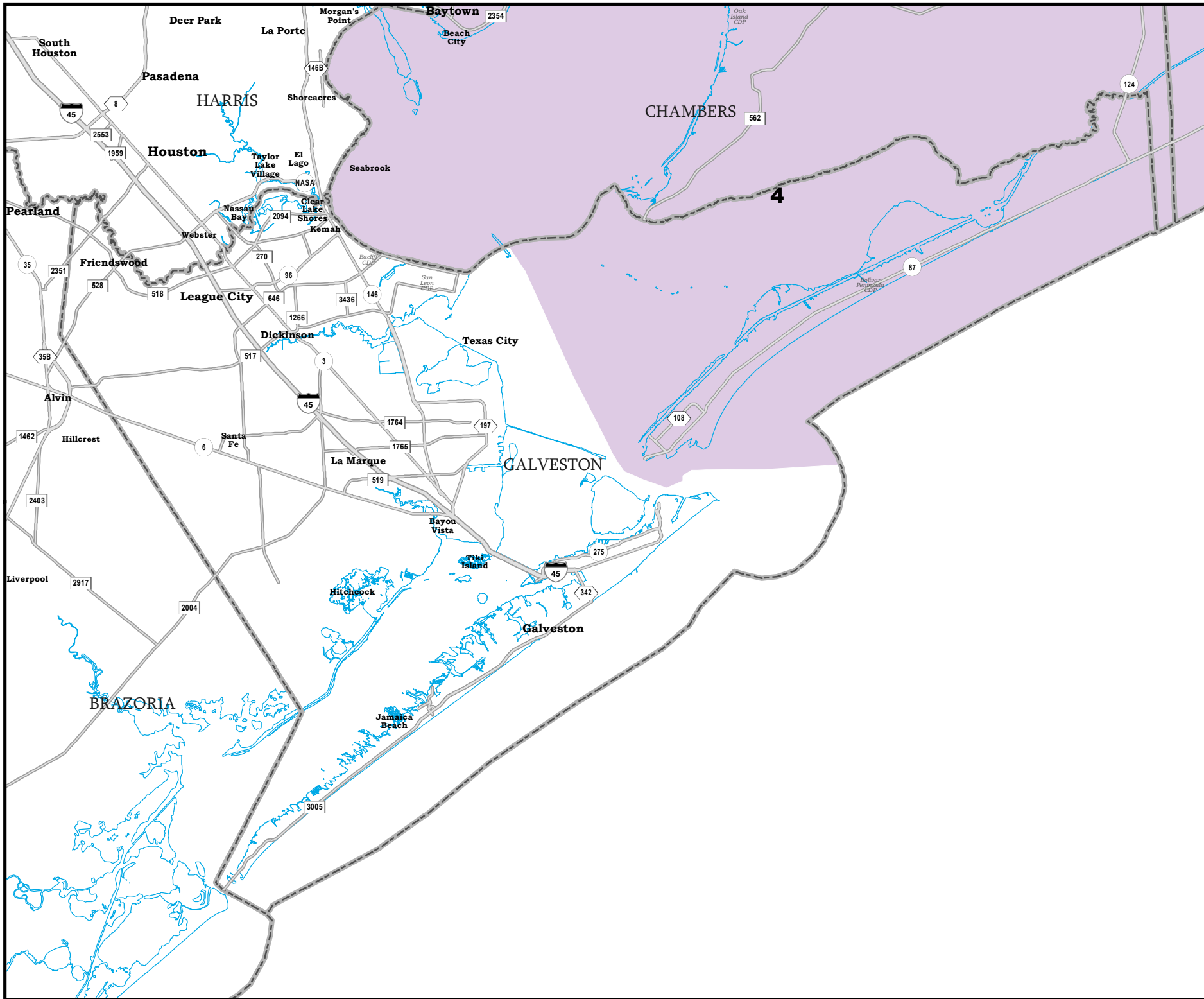
State Senate Districts Proposed Plan PLANS2148



48469
2020 Census
PLANS2148 2021-09-30 10:57:31

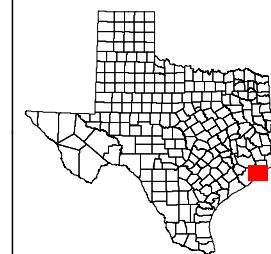
Map ID 5900
09/30/21 11:02:53





GALVESTON COUNTY

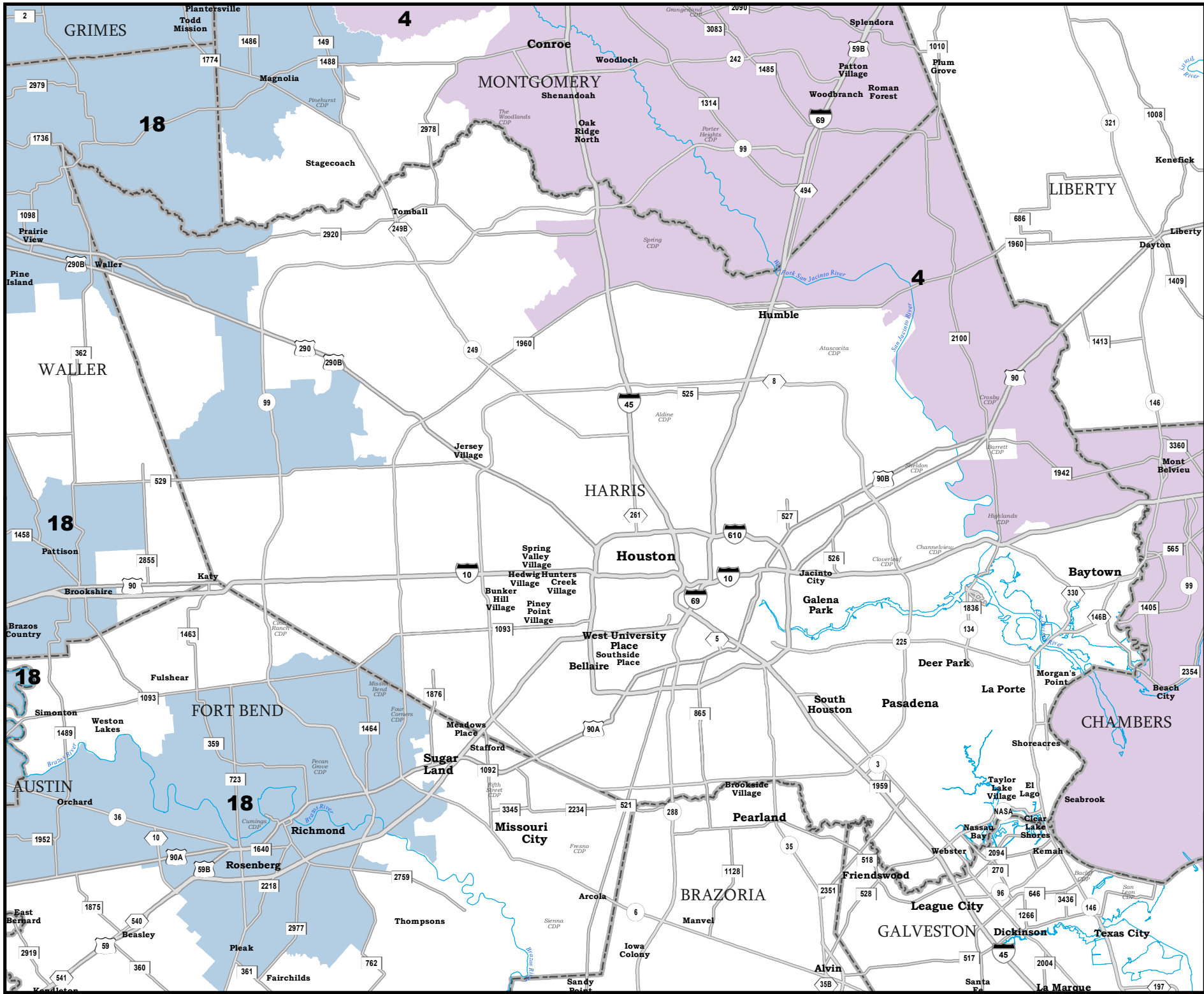
State Senate Districts Proposed Plan PLANS2148



48469
2020 Census
PLANS2148 2021-09-30 10:57:31

Map ID 5900
09/30/21 11:02:53

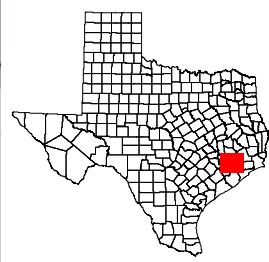




HARRIS COUNTY

State Senate Districts Proposed Plan PLANS2148

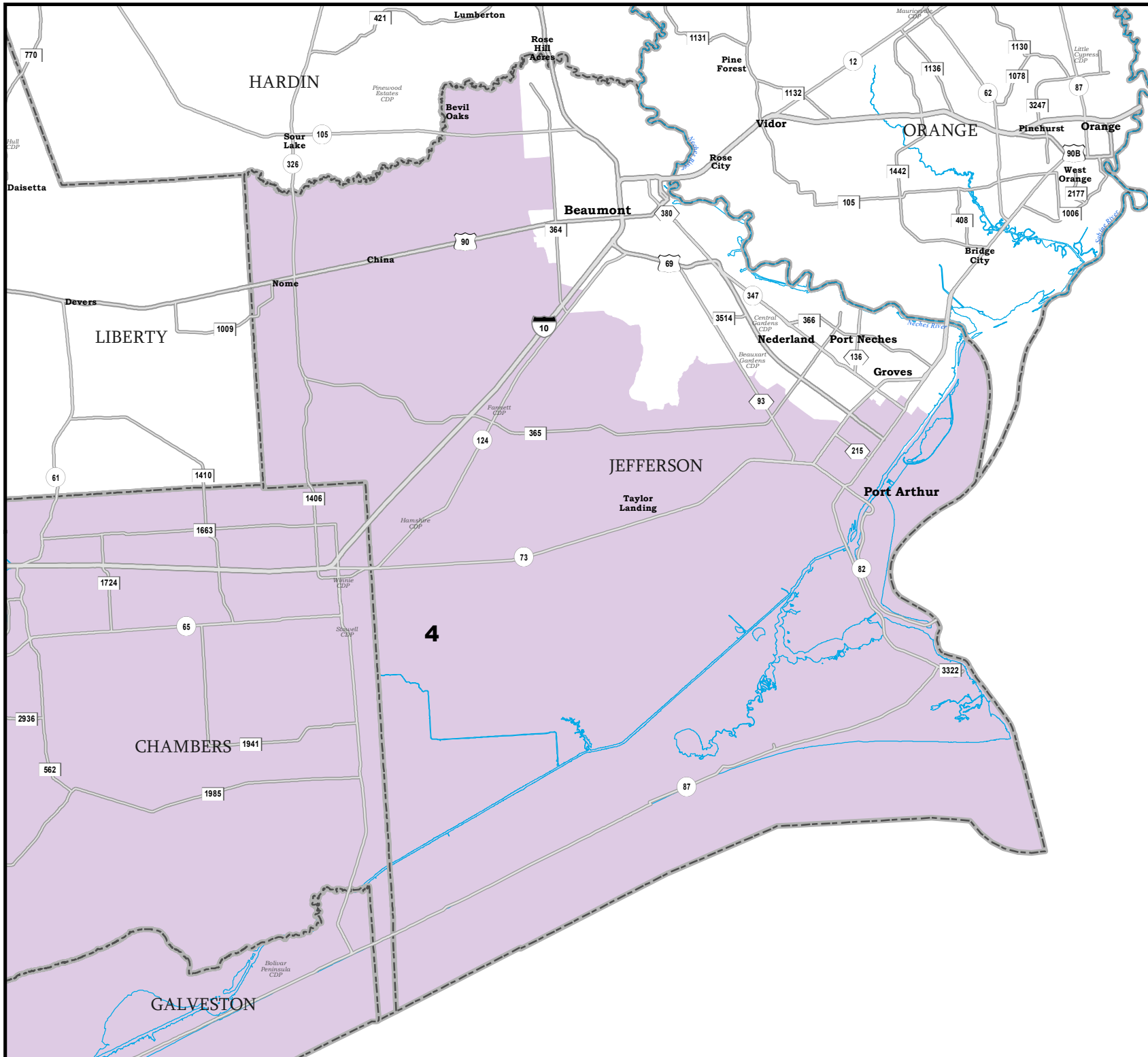
 COUNTIES
 **PLANS2148**



Map ID 5900
09/30/21 11:02:53



48469
2020 Census
PLANS2148 2021-09-30 10:57:31



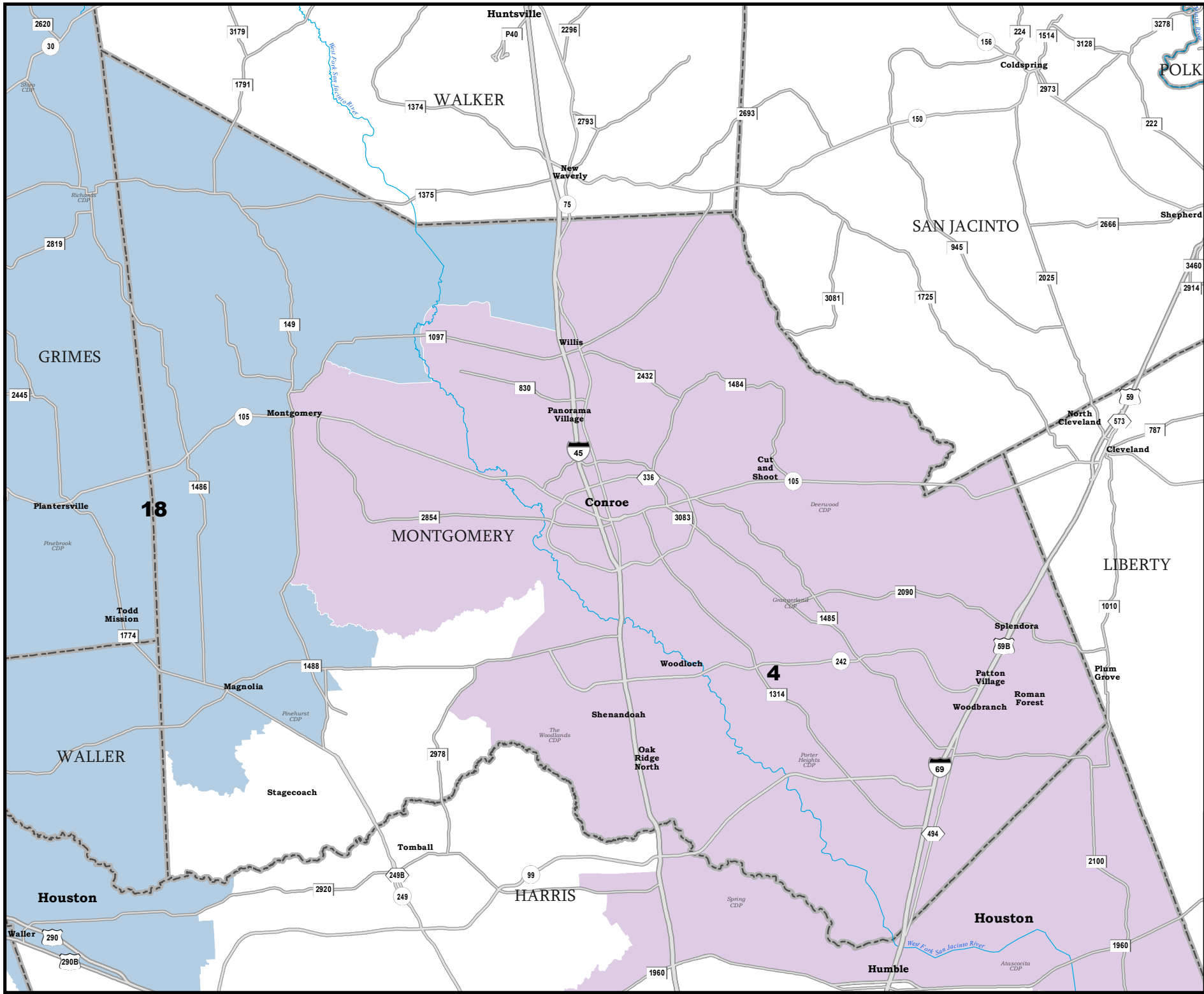
JEFFERSON COUNTY

State Senate Districts Proposed Plan PLANS2148

 COUNTIES

 **PLANS2148**



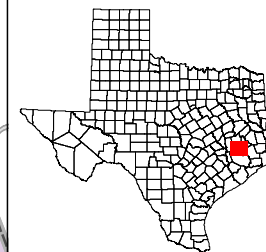


MONTGOMERY COUNTY

State Senate Districts Proposed Plan PLANS2148

 COUNTIES

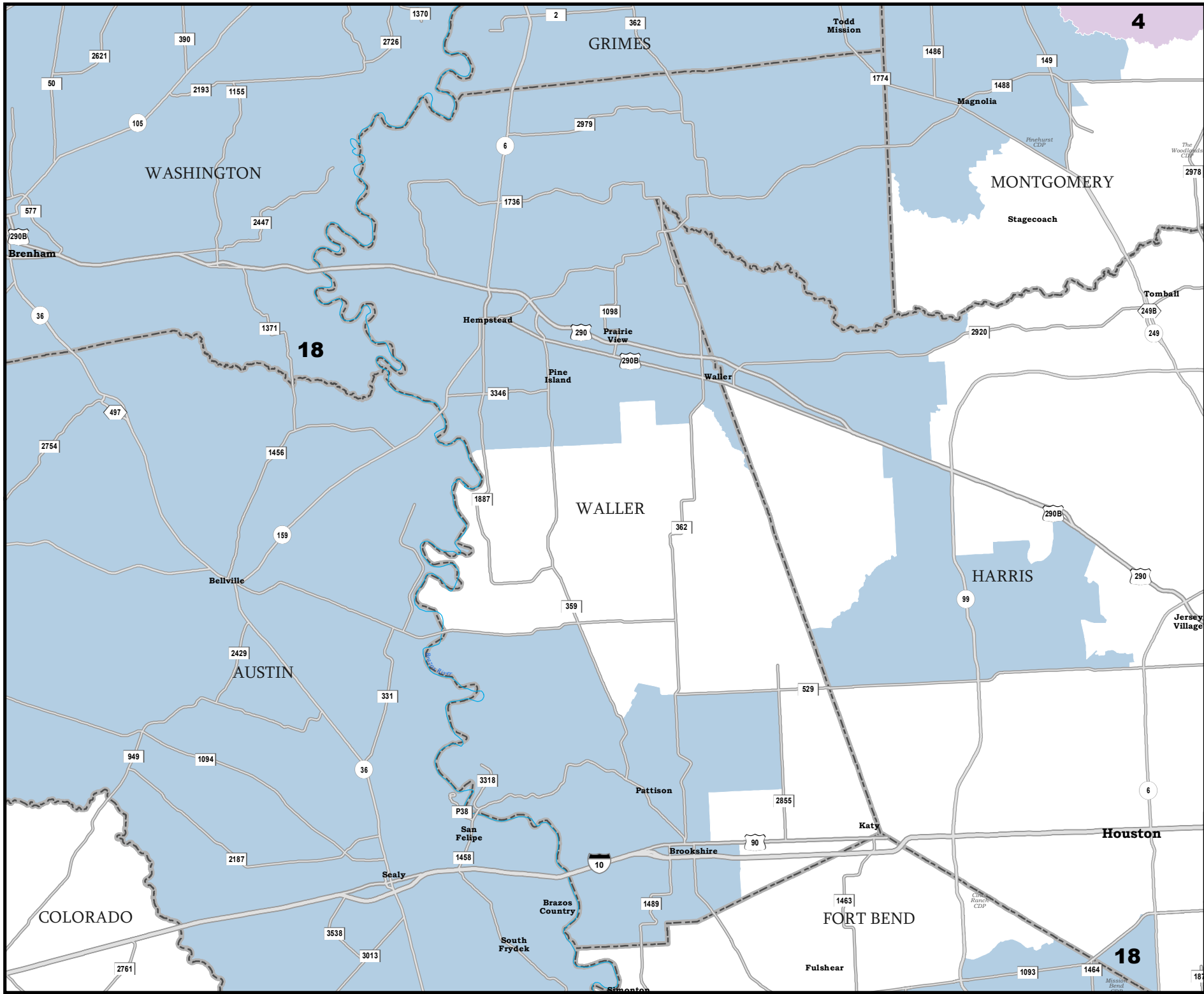
 **PLANS2148**



Map ID 5900
09/30/21 11:02:53



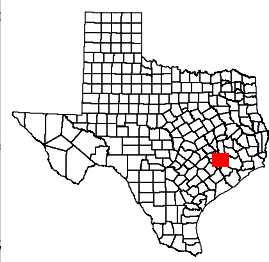
48469
2020 Census
PLANS2148 2021-09-30 10:57:31



WALLER COUNTY

State Senate Districts Proposed Plan **PLANS2148**

 COUNTIES
 **PLANS2148**



48469
 2020 Census
 PLANS2148 2021-09-30 10:57:31

Map ID 5900
 09/30/21 11:02:53
