

District Population Analysis with County Subtotals

HOUSE DISTRICTS - PLANH2112

Total State Population	29,145,505
Total Districts Required	150
Ideal District Population	194,303
Unassigned Population	28,746,527
Districts in Plan	2
Unassigned Geography	Yes
Districts Contiguous	Yes

	Population	-----Deviation-----	
		Total	Percent
Plan Overall Range		3,724	1.92%
Smallest District (28)	197,627	3,324	1.71%
Largest District (76)	201,351	7,048	3.63%
Average (mean)	199,489	5,186	2.67%

PLANH2112

District Population Analysis with County Subtotals

HOUSE DISTRICTS - PLANH2112

	Deviation		Total	Anglo	Non-Anglo	Asian	Black	Hispanic	B+H	%Anglo	%Non-Anglo	%Asian	%Black	%Hispanic	%B+H
DISTRICT 28	3,324	Total:	197,627	78,182	119,445	38,398	25,861	53,560	78,089	39.6	60.4	19.4	13.1	27.1	39.5
	1.71 %	VAP:	142,051	59,748	82,303	27,341	17,249	35,969	52,663	42.1	57.9	19.2	12.1	25.3	37.1
Fort Bend (24%)			197,627	78,182	119,445	38,398	25,861	53,560	78,089	39.6	60.4	19.4	13.1	27.1	39.5
DISTRICT 76	7,048	Total:	201,351	41,652	159,699	66,277	48,013	45,661	91,901	20.7	79.3	32.9	23.8	22.7	45.6
	3.63 %	VAP:	150,298	33,803	116,495	50,125	33,291	32,614	64,947	22.5	77.5	33.4	22.1	21.7	43.2
Fort Bend (24%)			201,351	41,652	159,699	66,277	48,013	45,661	91,901	20.7	79.3	32.9	23.8	22.7	45.6

**Population and Voter Data
 with Voter Registration Comparison
 HOUSE DISTRICTS - PLANH2112**

District	Deviation		Population								Total Voter Registration			Non-Suspense Voter Registration			
			Total	%Anglo	%Non-Anglo	%Asian	%Black	%Hispanic	%B+H	General Election	Turnout	Total	SSVR	TO/VR	Total	SSVR	TO/VR
28	3,324	Total:	197,627	39.6	60.4	19.4	13.1	27.1	39.5	2020	84,358	111,708	17.2 %	75.5 %	103,886	17.2 %	81.2 %
	1.71%	VAP:	142,051	42.1	57.9	19.2	12.1	25.3	37.1	2018	59,761	98,401	16.8 %	60.7 %	90,769	16.8 %	65.8 %
76	7,048	Total:	201,351	20.7	79.3	32.9	23.8	22.7	45.6	2020	82,761	114,606	15.3 %	72.2 %	106,467	15.5 %	77.7 %
	3.63%	VAP:	150,298	22.5	77.5	33.4	22.1	21.7	43.2	2018	57,176	102,768	15.4 %	55.6 %	93,936	15.7 %	60.9 %

For technical reasons, election results in Texas Legislative Council reports may vary slightly from the official election results. Complete official results for all elections are maintained by the Office of the Texas Secretary of State.
 SSVR = Spanish surname voter registration

Plan Fit Verification
HOUSE DISTRICTS
PLANH2112 Compared with PLANH2101

The amendment fits into the base plan.

American Community Survey Special Tabulation
 Using Census and American Community Survey Data
HOUSE DISTRICTS - PLANH2112

2020 Census			Special Tabulation of Citizen Voting Age Population (CVAP) from the 2017-2021 American Community Survey with Margins of Error												
			CVAP	Hispanic CVAP % Hispanic	Not Hispanic or Latino Citizen Voting Age Population (CVAP)										
District	Total	VAP			% Black Alone	% Black + White	% Black + American Indian	% White Alone	% American Indian Alone	% Asian Alone	% Native Hawaiian Alone	% American Indian + White	% Asian + White	% Remainder 2 or More Other	
28	197,627	142,051	123,380 (±4,590)	25.0 (±2.0)	10.6 (±1.6)	0.4 (±0.3)	0.0(±0.1)	46.9 (±1.4)	0.2 (±0.1)	16.0 (±1.7)	0.0 (±0.1)	0.3 (±0.2)	0.5 (±0.3)	0.0 (±0.1)	
76	201,351	150,298	123,580 (±5,394)	21.6 (±2.0)	22.0 (±2.2)	0.4 (±0.3)	0.1(±0.2)	27.0 (±1.6)	0.2 (±0.2)	27.5 (±2.2)	0.0 (±0.1)	0.2 (±0.2)	0.7 (±0.3)	0.2 (±0.2)	

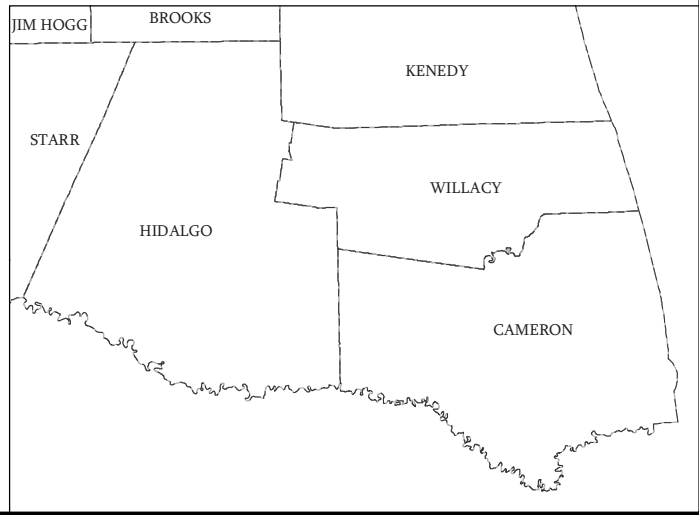
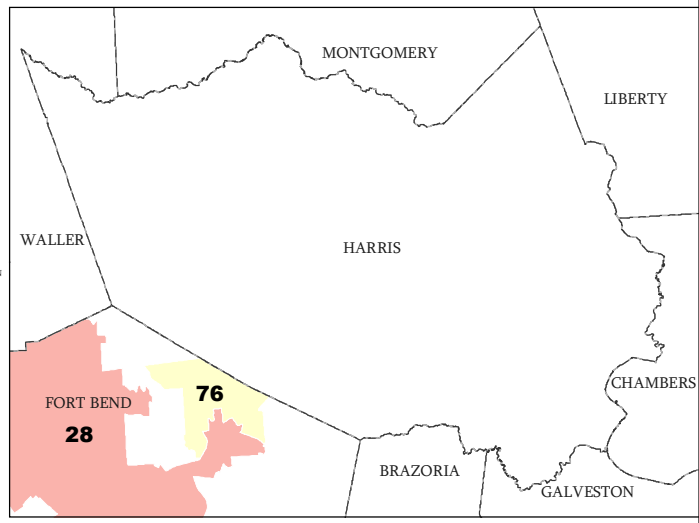
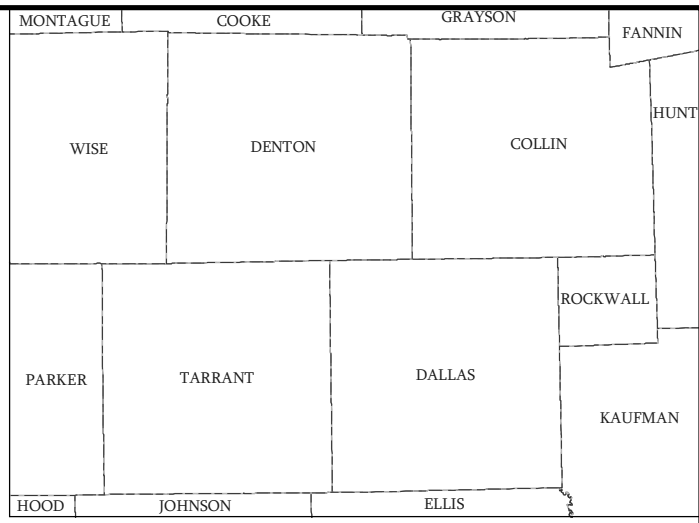
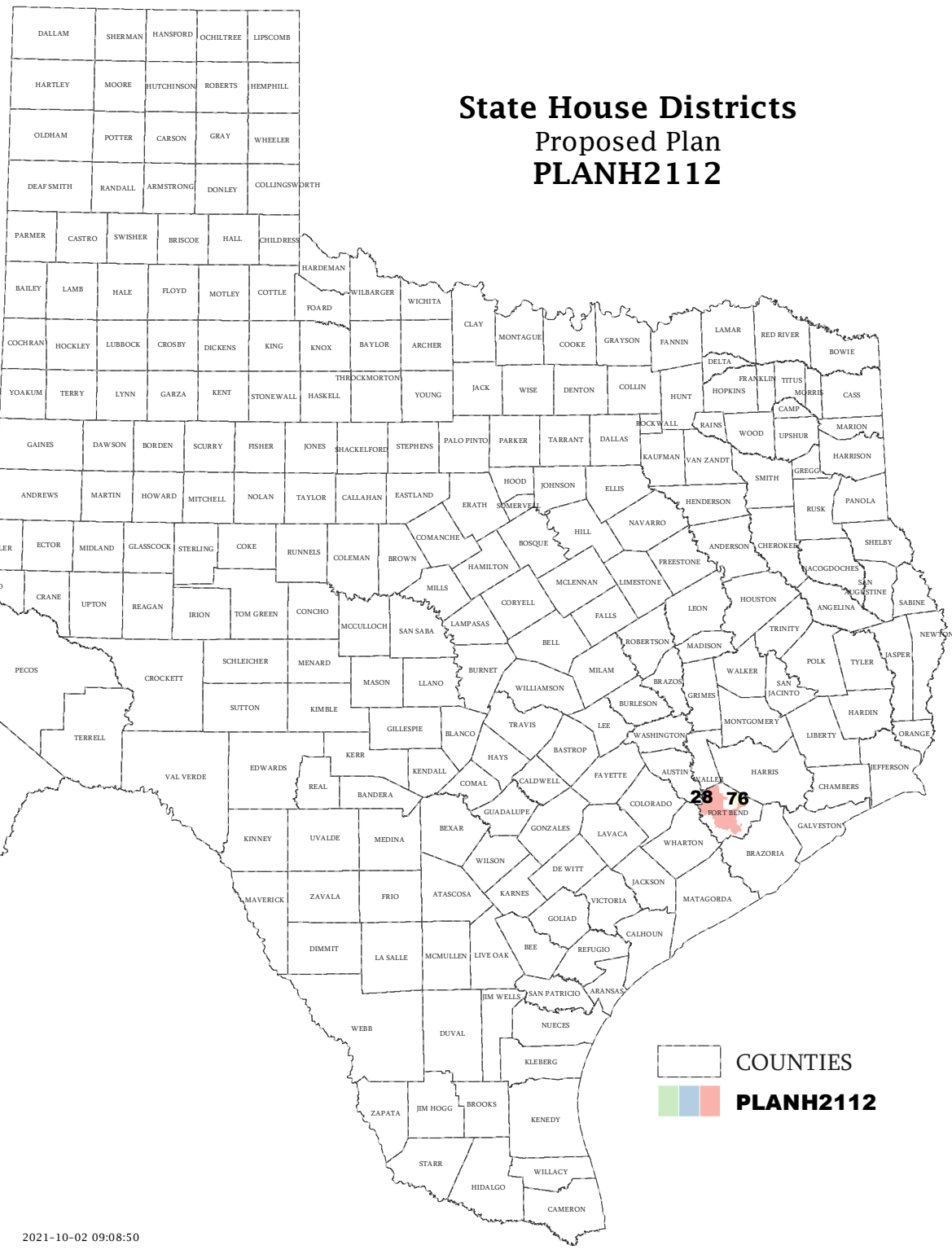
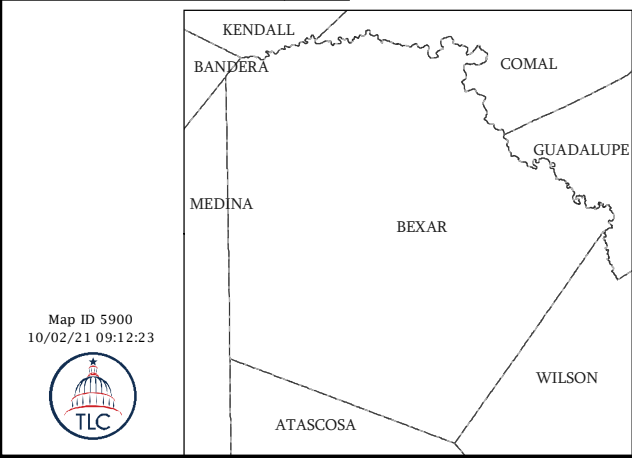
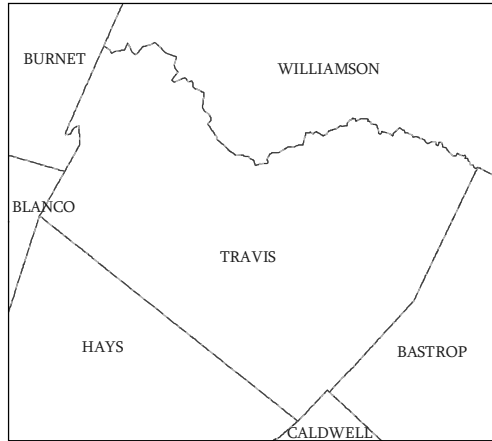
The American Community Survey provided estimated citizen voting age population (CVAP) data at the block group level in a Special Tabulation. Because the MOE can only be calculated using whole block groups, all block groups with more than 50% of the population in a district are included in the analysis. The Red-118 report provides a summary of the block groups used in the analysis.
 The percent for each CVAP population category is that group's CVAP divided by the CVAP total.
 Numbers in parentheses are margins of error at 90% confidence level.

Incumbents by District

HOUSE DISTRICTS - PLANH2112

District	Incumbents
28	Gates - R
76	Lalani - D

State House Districts Proposed Plan PLANH2112

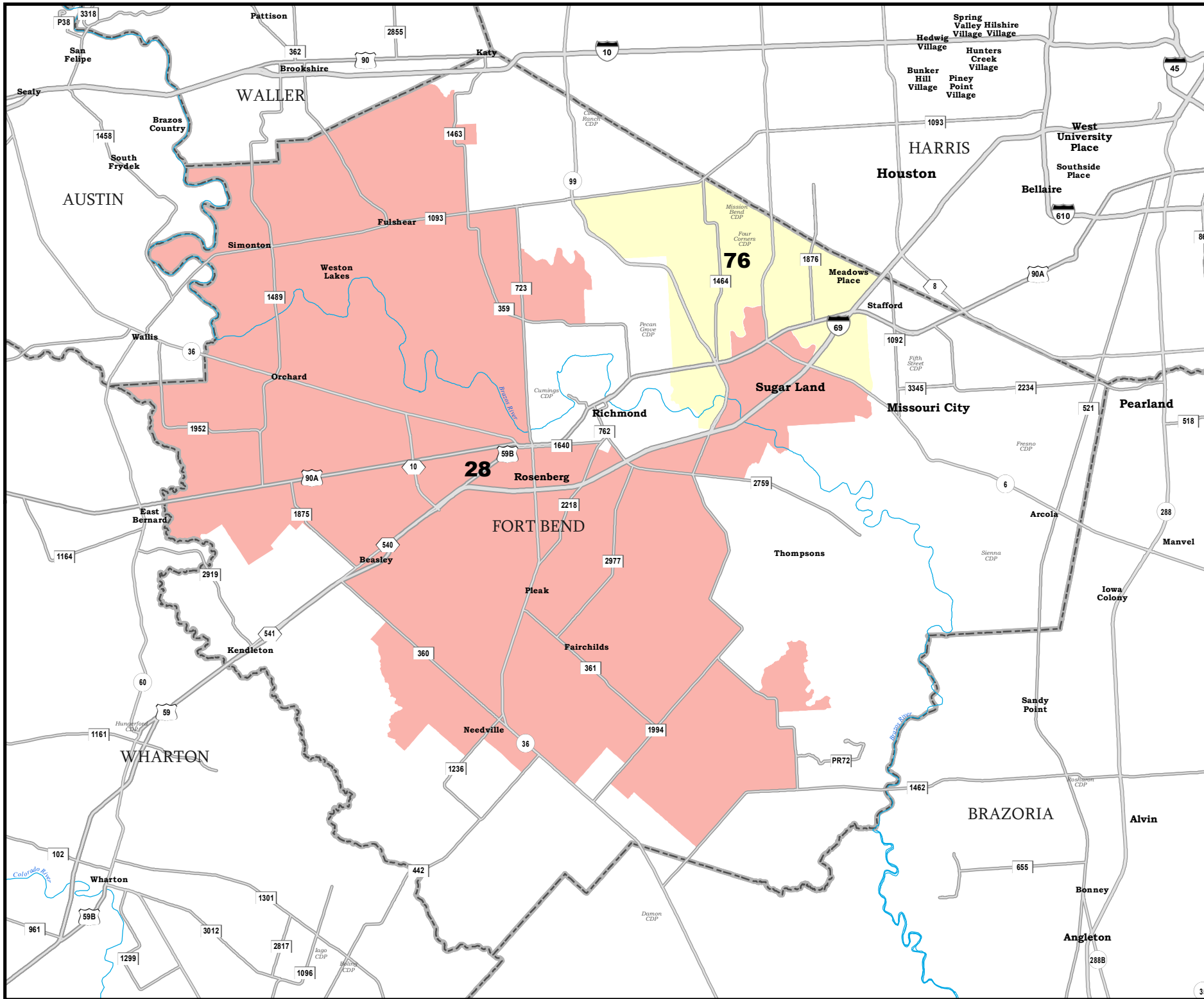


COUNTIES
PLANH2112

Map ID 5900
10/02/21 09:12:23



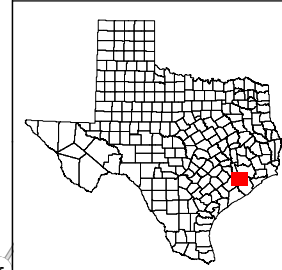
48692
2020 Census
PLANH2112 2021-10-02 09:08:50



FORT BEND COUNTY

State House Districts Proposed Plan PLANH2112

 COUNTIES
 **PLANH2112**



Map ID 5900
 10/02/21 09:12:23
 48692
 2020 Census
 PLANH2112 2021-10-02 09:08:50
