

District Population Analysis with County Subtotals

HOUSE DISTRICTS - PLANH2252

Total State Population	29,145,505
Total Districts Required	150
Ideal District Population	194,303
Unassigned Population	28,757,134
Districts in Plan	2
Unassigned Geography	Yes
Districts Contiguous	Yes

	Population	-----Deviation-----	
		Total	Percent
Plan Overall Range		3,165	1.62%
Smallest District (130)	192,603	-1,700	-0.87%
Largest District (126)	195,768	1,465	0.75%
Average (mean)	194,186	1,583	0.81%

PLANH2252

District Population Analysis with County Subtotals

HOUSE DISTRICTS - PLANH2252

	Deviation		Total	Anglo	Non-Anglo	Asian	Black	Hispanic	B+H	%Anglo	%Non-Anglo	%Asian	%Black	%Hispanic	%B+H
DISTRICT 126	1,465	Total:	195,768	86,748	109,020	21,038	34,568	51,717	84,411	44.3	55.7	10.7	17.7	26.4	43.1
	0.75 %	VAP:	148,392	71,394	76,998	15,753	23,986	35,210	58,312	48.1	51.9	10.6	16.2	23.7	39.3
Harris (4%)			195,768	86,748	109,020	21,038	34,568	51,717	84,411	44.3	55.7	10.7	17.7	26.4	43.1
DISTRICT 130	-1,700	Total:	192,603	105,268	87,335	17,929	20,167	46,304	65,275	54.7	45.3	9.3	10.5	24.0	33.9
	-0.87 %	VAP:	138,299	79,817	58,482	12,172	13,437	30,202	43,123	57.7	42.3	8.8	9.7	21.8	31.2
Harris (4%)			192,603	105,268	87,335	17,929	20,167	46,304	65,275	54.7	45.3	9.3	10.5	24.0	33.9

**Population and Voter Data
 with Voter Registration Comparison
 HOUSE DISTRICTS - PLANH2252**

District	Deviation		Population								Total Voter Registration			Non-Suspense Voter Registration			
			Total	%Anglo	%Non-Anglo	%Asian	%Black	%Hispanic	%B+H	General Election	Turnout	Total	SSVR	TO/VR	Total	SSVR	TO/VR
126	1,465	Total:	195,768	44.3	55.7	10.7	17.7	26.4	43.1	2020	89,431	124,379	13.8 %	71.9 %	113,676	13.9 %	78.7 %
	0.75%	VAP:	148,392	48.1	51.9	10.6	16.2	23.7	39.3	2018	67,862	117,896	12.8 %	57.6 %	106,120	13.0 %	63.9 %
130	-1,700	Total:	192,603	54.7	45.3	9.3	10.5	24.0	33.9	2020	89,868	119,217	13.4 %	75.4 %	111,684	13.5 %	80.5 %
	-0.87%	VAP:	138,299	57.7	42.3	8.8	9.7	21.8	31.2	2018	64,229	108,840	12.5 %	59.0 %	100,014	12.7 %	64.2 %

Plan Fit Verification
HOUSE DISTRICTS
PLANH2252 Compared with PLANH2176

The amendment fits into the base plan.

American Community Survey Special Tabulation
 Using Census and American Community Survey Data
HOUSE DISTRICTS - PLANH2252

2020 Census			Special Tabulation of Citizen Voting Age Population (CVAP) from the 2017-2021 American Community Survey with Margins of Error												
			CVAP	Hispanic CVAP % Hispanic	Not Hispanic or Latino Citizen Voting Age Population (CVAP)										
District	Total	VAP			% Black Alone	% Black + White	% Black + American Indian	% White Alone	% American Indian Alone	% Asian Alone	% Native Hawaiian Alone	% American Indian + White	% Asian + White	% Remainder 2 or More Other	
126	195,768	148,392	134,075 (±5,131)	20.6 (±2.1)	15.9 (±1.7)	0.6 (±0.3)	0.2(±0.2)	53.0 (±1.3)	0.1 (±0.1)	8.5 (±1.3)	0.1 (±0.2)	0.3 (±0.2)	0.5 (±0.3)	0.3 (±0.2)	
130	192,603	138,299	117,590 (±4,723)	18.6 (±1.6)	10.0 (±1.8)	0.1 (±0.2)	0.0(±0.1)	63.7 (±1.7)	0.1 (±0.1)	6.1 (±0.9)	0.0 (±0.1)	0.4 (±0.2)	0.7 (±0.4)	0.2 (±0.2)	

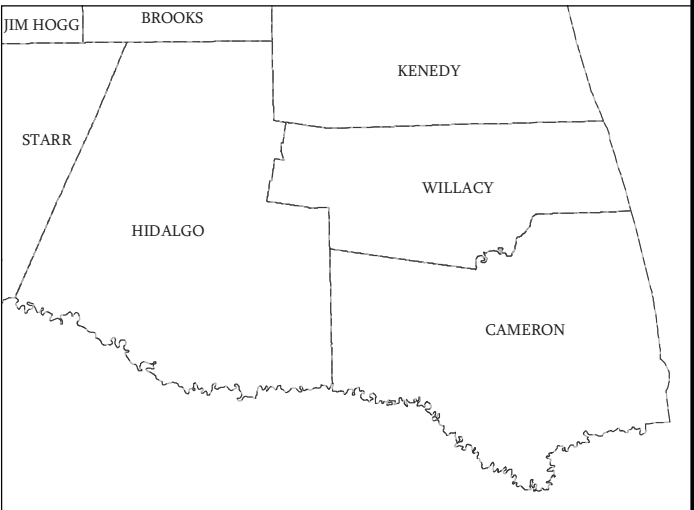
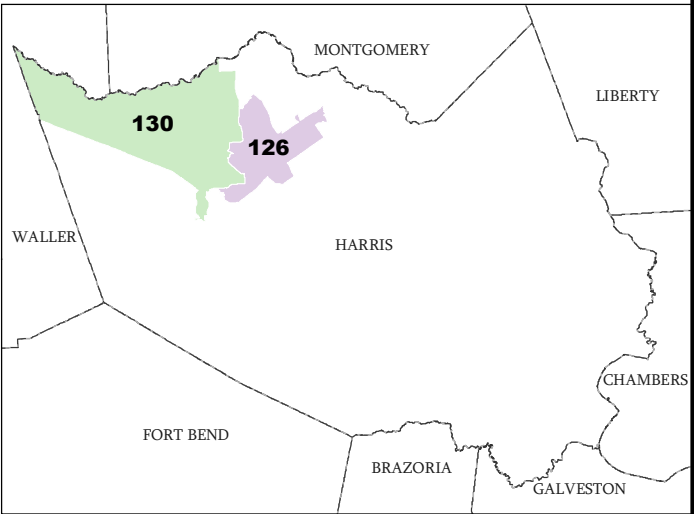
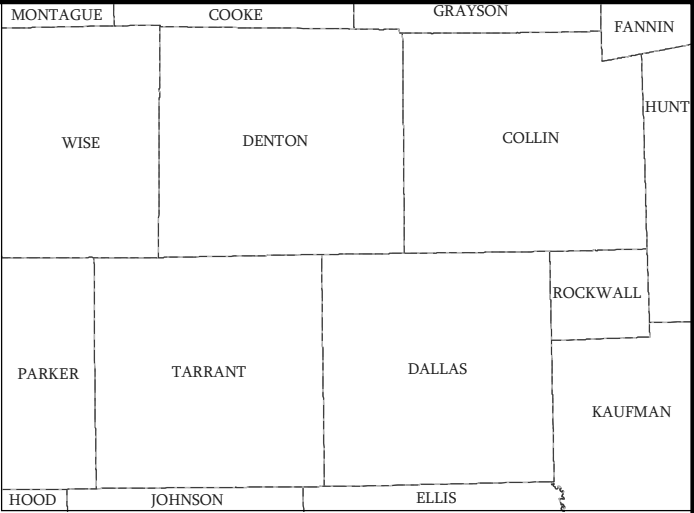
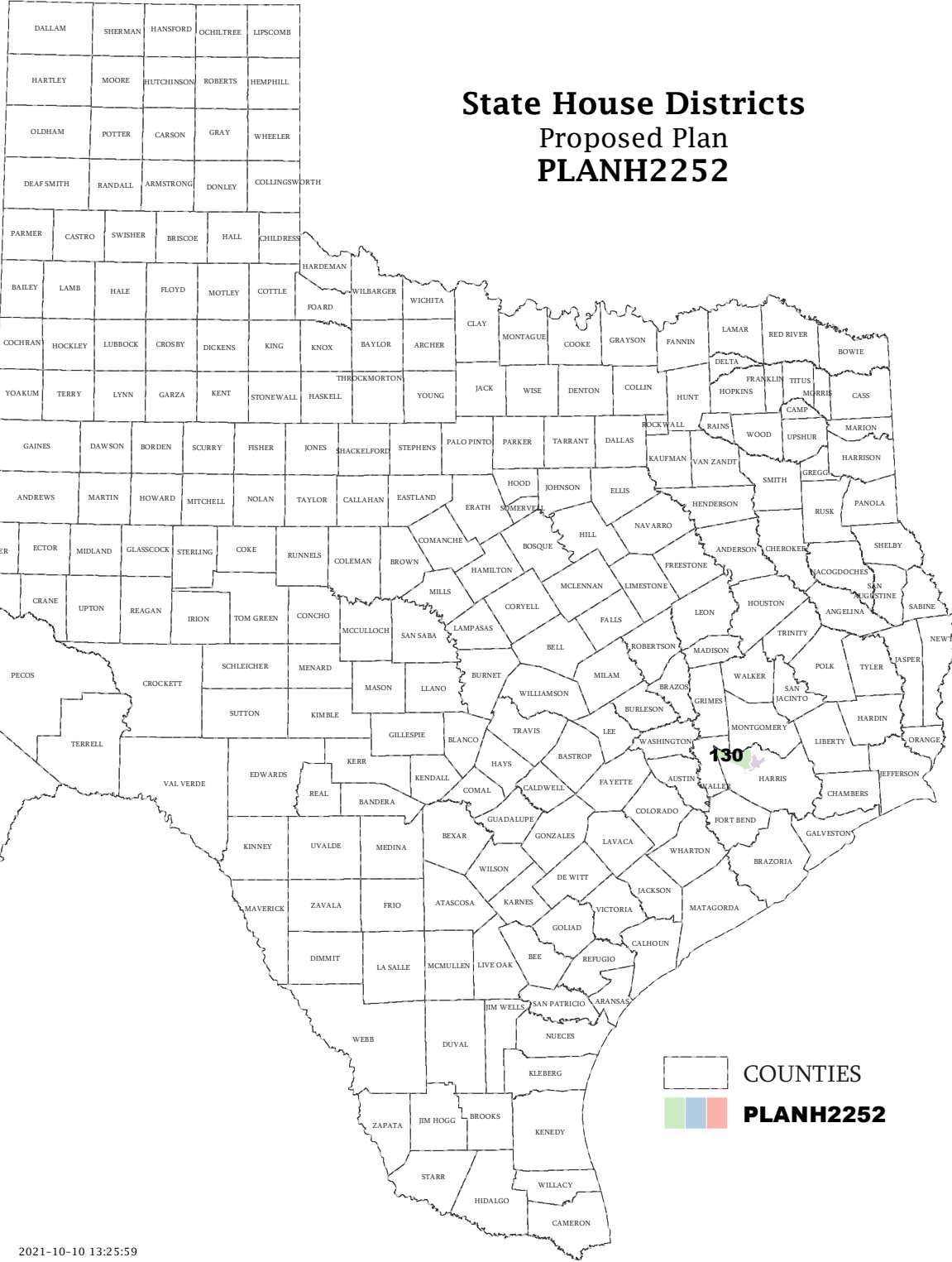
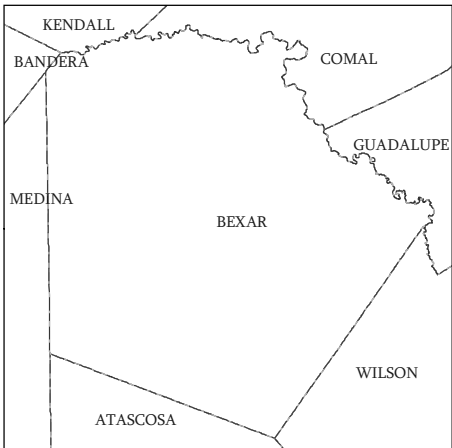
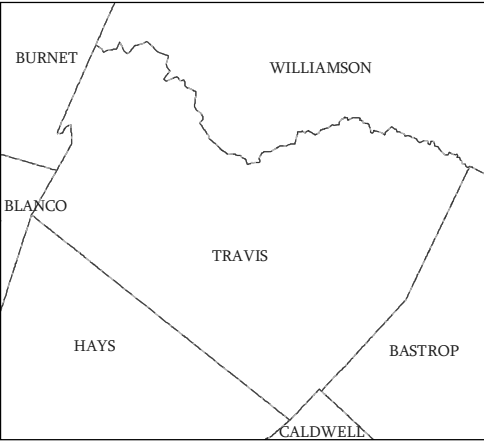
The American Community Survey provided estimated citizen voting age population (CVAP) data at the block group level in a Special Tabulation. Because the MOE can only be calculated using whole block groups, all block groups with more than 50% of the population in a district are included in the analysis. The Red-118 report provides a summary of the block groups used in the analysis.
 The percent for each CVAP population category is that group's CVAP divided by the CVAP total.
 Numbers in parentheses are margins of error at 90% confidence level.

Incumbents by District

HOUSE DISTRICTS - PLANH2252

District	Incumbents
126	Harless - R
130	Oliverson - R

State House Districts Proposed Plan PLANH2252

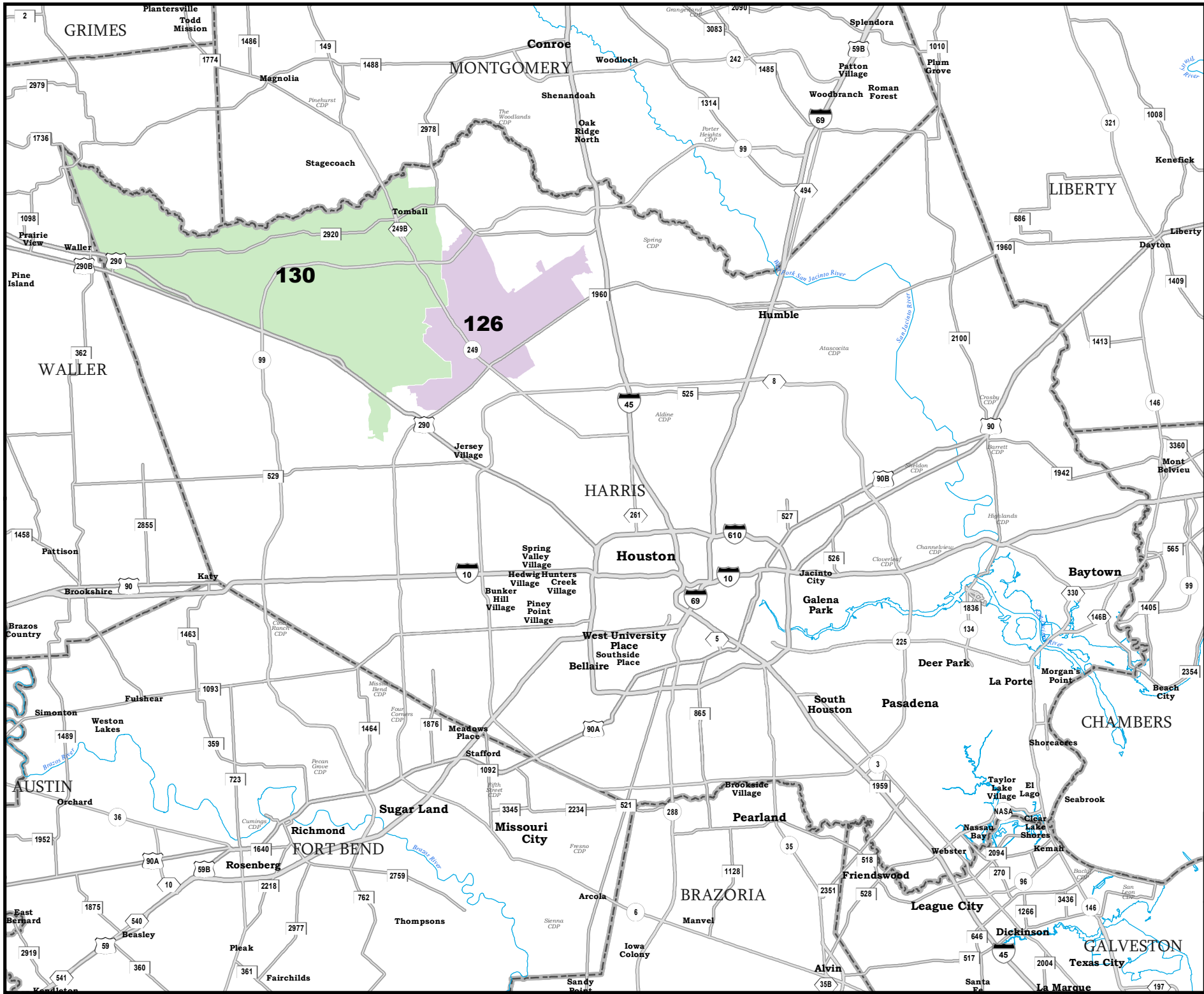


COUNTIES
PLANH2252

Map ID 5900
10/10/21 13:27:34



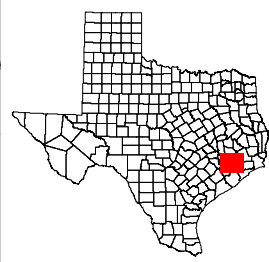
49438
2020 Census
PLANH2252 2021-10-10 13:25:59



HARRIS COUNTY

State House Districts Proposed Plan PLANH2252

 COUNTIES
 PLANH2252



49438
 2020 Census
 PLANH2252 2021-10-10 13:25:59

Map ID 5900
 10/10/21 13:27:34
