

District Population Analysis with County Subtotals
CONGRESSIONAL DISTRICTS - PLANC2173

Total State Population	29,145,505
Total Districts Required	38
Ideal District Population	766,987
Unassigned Population	25,310,570
Districts in Plan	5
Unassigned Geography	Yes
Districts Contiguous	Yes

	Population	-----Deviation-----	
		Total	Percent
Plan Overall Range		0	0.00%
Smallest District (7)	766,987	0	0.00%
Largest District (7)	766,987	0	0.00%
Average (mean)	766,987	0	0.00%

PLANC2173

District Population Analysis with County Subtotals

CONGRESSIONAL DISTRICTS - PLAN2173

Deviation			Total	Anglo	Non-Anglo	Asian	Black	Hispanic	B+H	%Anglo	%Non-Anglo	%Asian	%Black	%Hispanic	%B+H
DISTRICT 7	0	Total:	766,987	209,321	557,666	164,905	161,748	230,186	384,049	27.3	72.7	21.5	21.1	30.0	50.1
	0.00 %	VAP:	595,083	178,957	416,126	127,303	117,882	168,330	281,402	30.1	69.9	21.4	19.8	28.3	47.3
Fort Bend (24%)			199,975	36,118	163,857	73,438	47,595	43,200	89,111	18.1	81.9	36.7	23.8	21.6	44.6
Harris (12%)			567,012	173,203	393,809	91,467	114,153	186,986	294,938	30.5	69.5	16.1	20.1	33.0	52.0
DISTRICT 9	0	Total:	766,987	134,031	632,956	111,602	262,029	261,685	514,556	17.5	82.5	14.6	34.2	34.1	67.1
	0.00 %	VAP:	569,977	109,860	460,117	86,303	194,490	178,755	368,247	19.3	80.7	15.1	34.1	31.4	64.6
Brazoria (0%)			46	1	45	4	7	33	40	2.2	97.8	8.7	15.2	71.7	87.0
Fort Bend (40%)			326,794	80,422	246,372	71,074	101,784	73,812	172,336	24.6	75.4	21.7	31.1	22.6	52.7
Harris (9%)			440,147	53,608	386,539	40,524	160,238	187,840	342,180	12.2	87.8	9.2	36.4	42.7	77.7
DISTRICT 18	0	Total:	766,987	149,830	617,157	35,109	294,141	288,479	573,375	19.5	80.5	4.6	38.4	37.6	74.8
	0.00 %	VAP:	568,045	125,820	442,225	28,075	215,830	196,158	407,216	22.1	77.9	4.9	38.0	34.5	71.7
Harris (16%)			766,987	149,830	617,157	35,109	294,141	288,479	573,375	19.5	80.5	4.6	38.4	37.6	74.8
DISTRICT 29	0	Total:	766,987	137,466	629,521	33,398	103,996	492,785	588,728	17.9	82.1	4.4	13.6	64.2	76.8
	0.00 %	VAP:	556,058	115,620	440,438	25,677	74,262	338,198	408,427	20.8	79.2	4.6	13.4	60.8	73.5
Harris (16%)			766,987	137,466	629,521	33,398	103,996	492,785	588,728	17.9	82.1	4.4	13.6	64.2	76.8
DISTRICT 38	0	Total:	766,987	95,104	671,883	40,120	134,117	500,099	625,869	12.4	87.6	5.2	17.5	65.2	81.6
	0.00 %	VAP:	555,610	81,020	474,590	31,724	95,792	346,665	438,135	14.6	85.4	5.7	17.2	62.4	78.9
Harris (16%)			766,987	95,104	671,883	40,120	134,117	500,099	625,869	12.4	87.6	5.2	17.5	65.2	81.6

Population and Voter Data
 with Voter Registration Comparison

CONGRESSIONAL DISTRICTS - PLANC2173

District	Deviation		Population							Total Voter Registration			Non-Suspense Voter Registration				
			Total	%Anglo	%Non-Anglo	%Asian	%Black	%Hispanic	%B+H	General Election	Turnout	Total	SSVR	TO/VR	Total	SSVR	TO/VR
7	0 0.00%	Total:	766,987	27.3	72.7	21.5	21.1	30.0	50.1	2020	279,110	400,391	14.3 %	69.7 %	363,641	14.4 %	76.8 %
		VAP:	595,083	30.1	69.9	21.4	19.8	28.3	47.3	2018	205,845	371,458	14.1 %	55.4 %	330,439	14.4 %	62.3 %
9	0 0.00%	Total:	766,987	17.5	82.5	14.6	34.2	34.1	67.1	2020	284,461	417,994	16.1 %	68.1 %	385,646	16.5 %	73.8 %
		VAP:	569,977	19.3	80.7	15.1	34.1	31.4	64.6	2018	213,607	391,540	15.5 %	54.6 %	356,141	15.9 %	60.0 %
18	0 0.00%	Total:	766,987	19.5	80.5	4.6	38.4	37.6	74.8	2020	265,495	420,937	19.1 %	63.1 %	382,332	19.7 %	69.4 %
		VAP:	568,045	22.1	77.9	4.9	38.0	34.5	71.7	2018	193,503	397,365	17.9 %	48.7 %	355,762	18.6 %	54.4 %
29	0 0.00%	Total:	766,987	17.9	82.1	4.4	13.6	64.2	76.8	2020	200,678	341,517	44.4 %	58.8 %	314,883	45.4 %	63.7 %
		VAP:	556,058	20.8	79.2	4.6	13.4	60.8	73.5	2018	144,500	324,558	43.1 %	44.5 %	295,032	44.4 %	49.0 %
38	0 0.00%	Total:	766,987	12.4	87.6	5.2	17.5	65.2	81.6	2020	195,309	332,603	43.0 %	58.7 %	310,121	43.9 %	63.0 %
		VAP:	555,610	14.6	85.4	5.7	17.2	62.4	78.9	2018	140,653	313,451	42.4 %	44.9 %	287,411	43.6 %	48.9 %

For technical reasons, election results in Texas Legislative Council reports may vary slightly from the official election results. Complete official results for all elections are maintained by the Office of the Texas Secretary of State.
 SSVR = Spanish surname voter registration

Incumbents by District

CONGRESSIONAL DISTRICTS - PLANC2173

District	Incumbents
7	Fletcher - D
9	Green - D
18	*Crenshaw - R *Jackson Lee - D
29	N/A
38	Garcia - D

* Incumbents paired.

**American Community Survey Special Tabulation
 Using Census and American Community Survey Data
 CONGRESSIONAL DISTRICTS - PLANC2173**

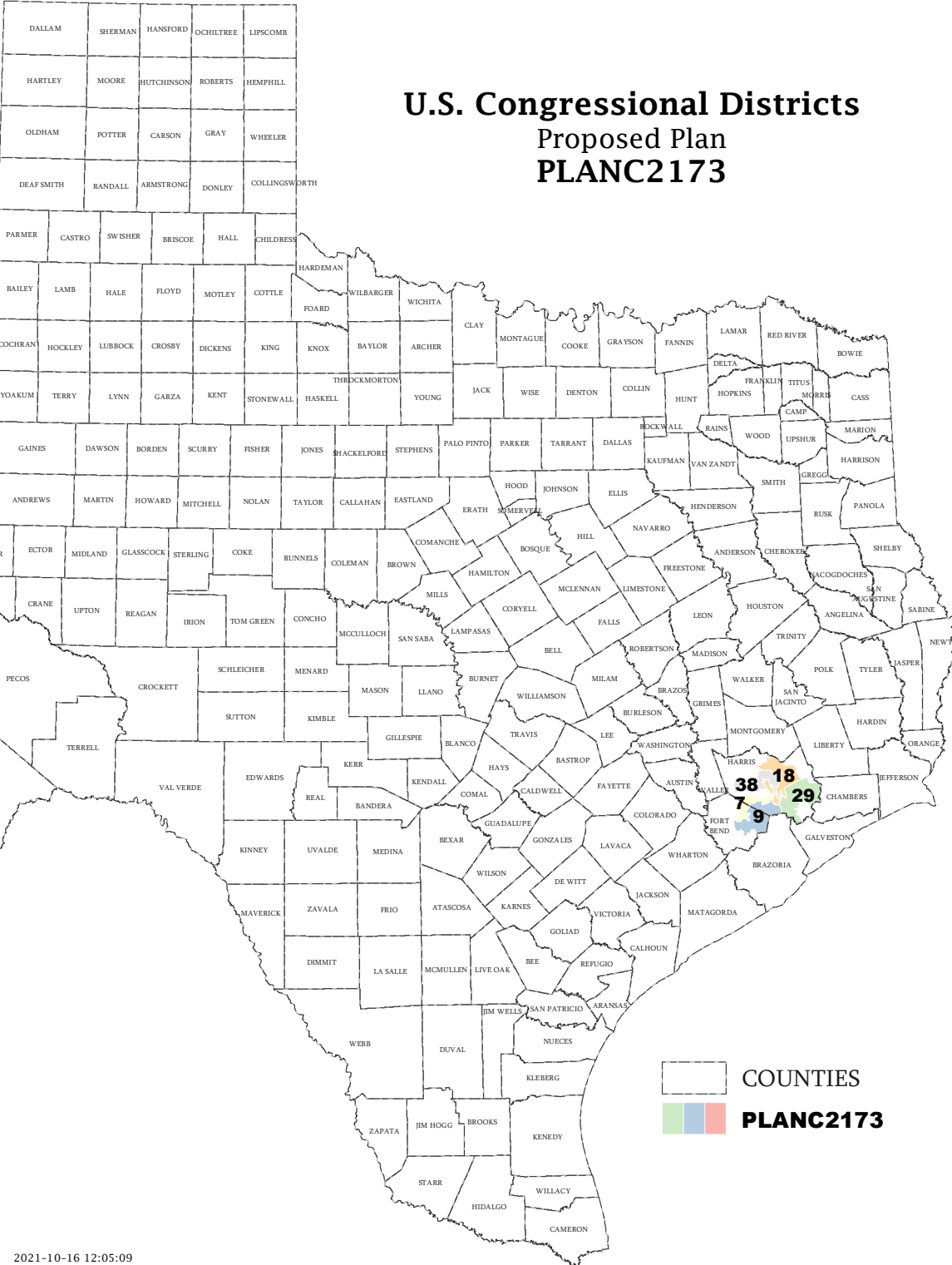
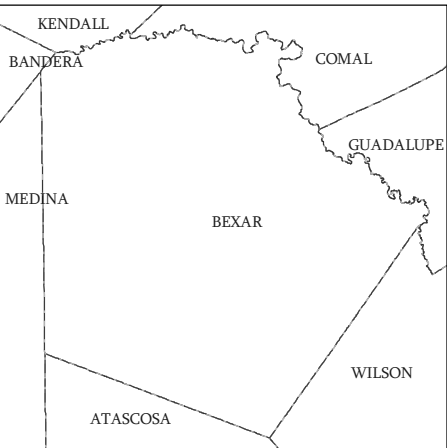
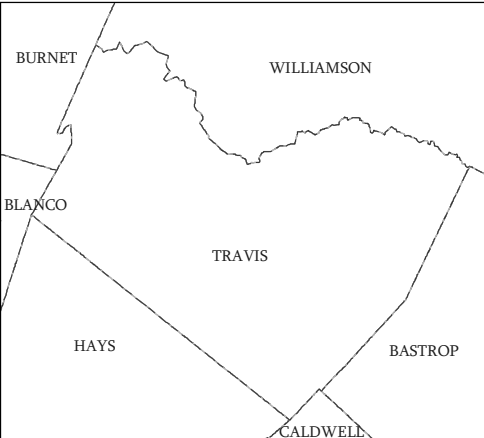
Special Tabulation of Citizen Voting Age Population (CVAP) from the 2015-2019 American Community Survey with Margins of Error														
2020 Census			Hispanic CVAP	Not Hispanic or Latino Citizen Voting Age Population (CVAP)										
District	Total	VAP		CVAP	% Hispanic	% Black Alone	% Black + White	% Black + American Indian	% White Alone	% American Indian Alone	% Asian Alone	% Native Hawaiian Alone	% American Indian + White	% Asian + White
7	766,987	595,083	433,925 (±6,261)	19.8 (±0.8)	19.9 (±0.8)	0.3 (±0.1)	0.1(±0.1)	41.2 (±0.7)	0.3 (±0.1)	17.2 (±0.6)	0.0 (±0.1)	0.3 (±0.1)	0.7 (±0.1)	0.2 (±0.1)
9	766,987	569,977	445,300 (±6,570)	20.8 (±0.7)	40.2 (±0.9)	0.3 (±0.1)	0.1(±0.1)	26.1 (±0.5)	0.2 (±0.1)	11.8 (±0.5)	0.1 (±0.1)	0.1 (±0.1)	0.3 (±0.1)	0.2 (±0.1)
18	766,987	568,045	465,065 (±6,800)	24.7 (±0.7)	42.4 (±0.9)	0.3 (±0.1)	0.2(±0.1)	28.3 (±0.6)	0.2 (±0.1)	3.1 (±0.3)	0.1 (±0.1)	0.2 (±0.1)	0.2 (±0.1)	0.3 (±0.1)
29	766,987	556,058	416,234 (±6,146)	50.9 (±0.9)	15.6 (±0.7)	0.4 (±0.1)	0.1(±0.1)	28.6 (±0.6)	0.1 (±0.1)	3.6 (±0.3)	0.0 (±0.1)	0.3 (±0.1)	0.2 (±0.1)	0.2 (±0.1)
38	766,987	555,610	381,720 (±6,851)	50.7 (±1.0)	21.4 (±0.9)	0.2 (±0.1)	0.1(±0.1)	21.2 (±0.6)	0.2 (±0.1)	5.6 (±0.4)	0.0 (±0.1)	0.2 (±0.1)	0.2 (±0.1)	0.2 (±0.1)

The American Community Survey provided estimated citizen voting age population (CVAP) data at the block group level in a Special Tabulation. Because the MOE can only be calculated using whole block groups, all block groups with more than 50% of the population in a district are included in the analysis. The Red-118 report provides a summary of the block groups used in the analysis.

The percent for each CVAP population category is that group's CVAP divided by the CVAP total.

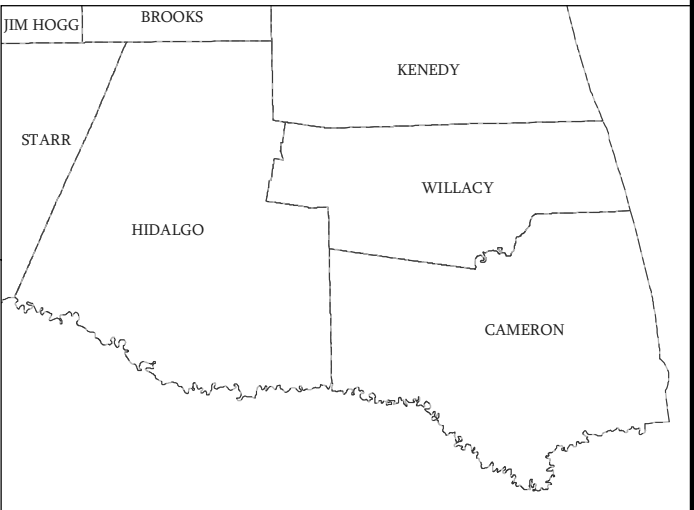
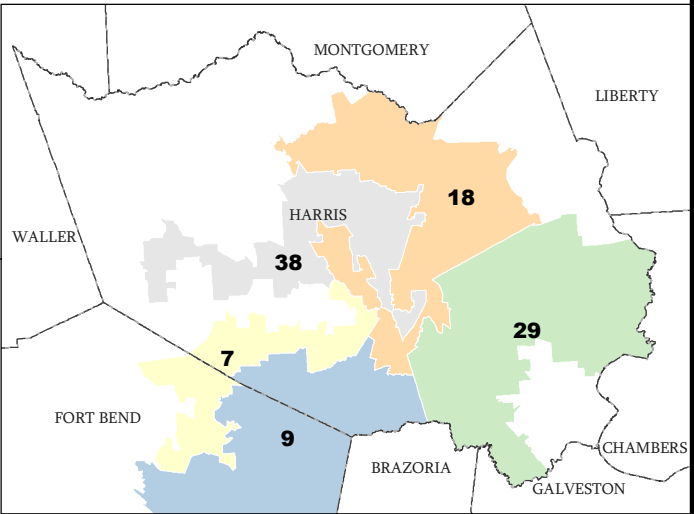
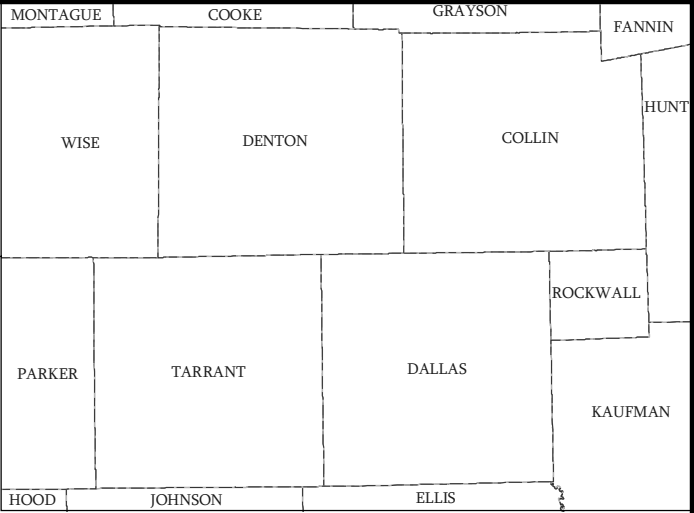
Numbers in parentheses are margins of error at 90% confidence level.

U.S. Congressional Districts Proposed Plan PLANC2173



COUNTIES

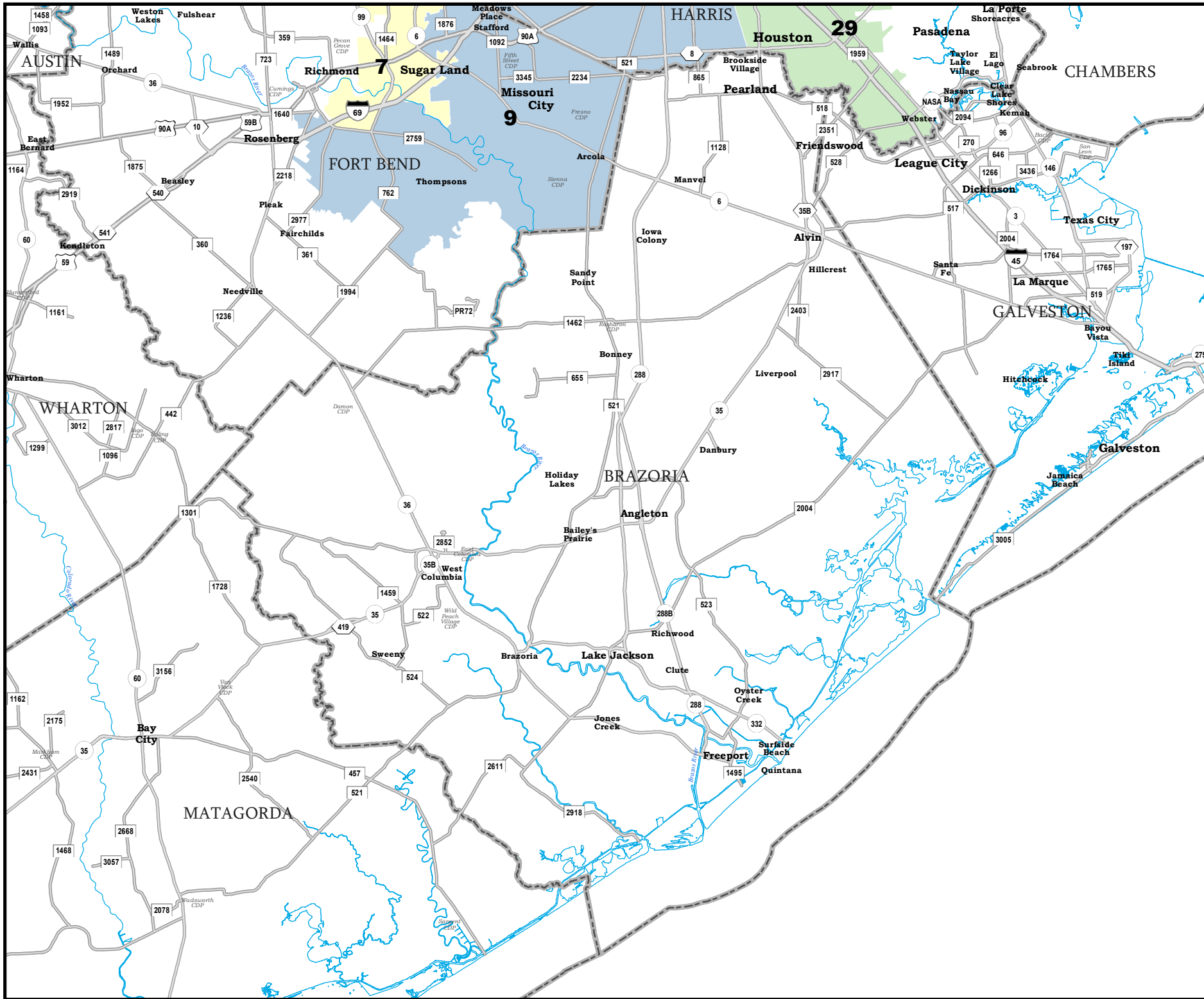
PLANC2173



Map ID 5900
10/16/21 12:09:06



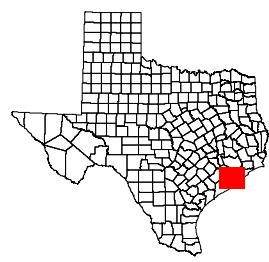
50178
2020 Census
PLANC2173 2021-10-16 12:05:09



BRAZORIA COUNTY

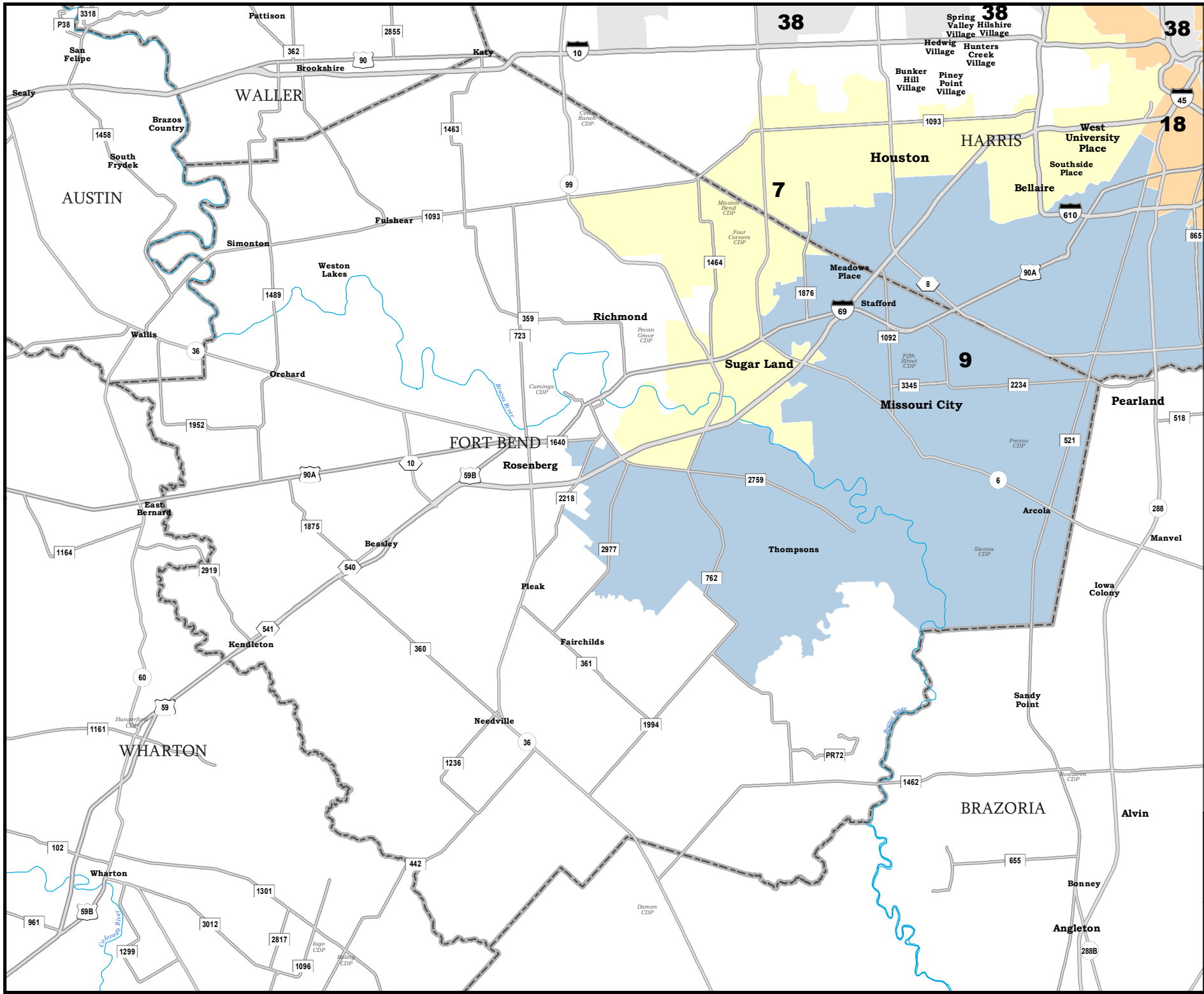
U.S. Congressional Districts Proposed Plan PLANC2173

 COUNTIES
 **PLANC2173**



50178
 2020 Census
 PLANC2173 2021-10-16 12:05:09

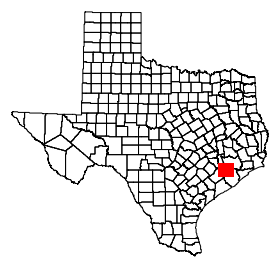





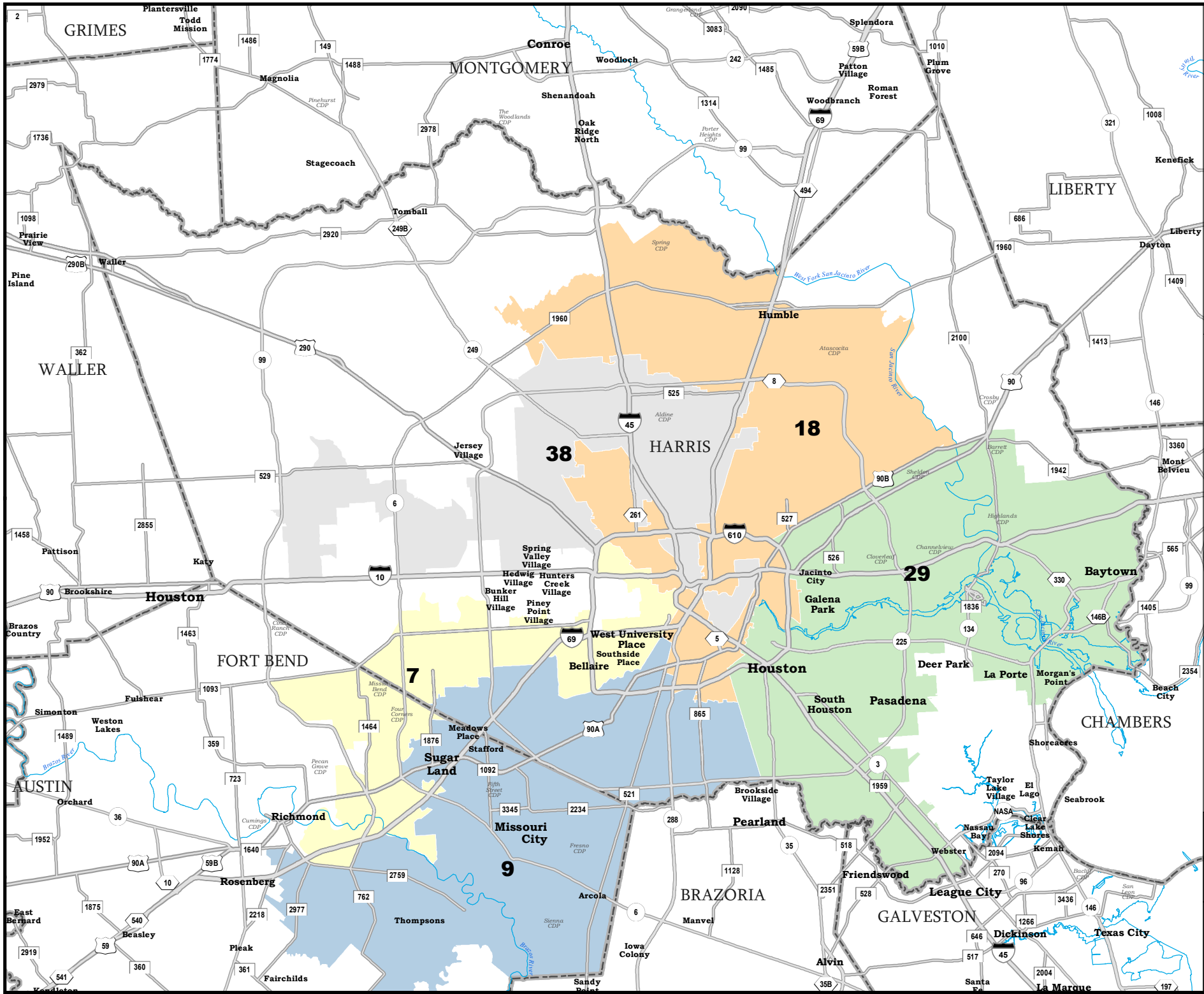
FORT BEND COUNTY

U.S. Congressional Districts Proposed Plan PLANC2173

 COUNTIES
 **PLANC2173**



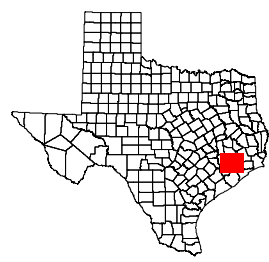
Map ID 5900
 10/16/21 12:09:06

 50178
 2020 Census
 PLANC2173 2021-10-16 12:05:09



HARRIS COUNTY

U.S. Congressional Districts Proposed Plan PLANC2173

 COUNTIES
 **PLANC2173**



Map ID 5900
10/16/21 12:09:06



50178
2020 Census
PLANC2173 2021-10-16 12:05:09