

District Population Analysis with County Subtotals

HOUSE DISTRICTS - PLANH2164

Total State Population	29,145,505
Total Districts Required	150
Ideal District Population	194,303
Unassigned Population	28,368,644
Districts in Plan	4
Unassigned Geography	Yes
Districts Contiguous	Yes

	Population	-----Deviation-----	
		Total	Percent
Plan Overall Range		12,102	6.23%
Smallest District (148)	187,104	-7,199	-3.71%
Largest District (139)	199,206	4,903	2.52%
Average (mean)	194,215	4,362	2.25%

PLANH2164

District Population Analysis with County Subtotals

HOUSE DISTRICTS - PLANH2164

	Deviation		Total	Anglo	Non-Anglo	Asian	Black	Hispanic	B+H	%Anglo	%Non-Anglo	%Asian	%Black	%Hispanic	%B+H
DISTRICT 126	3,645	Total:	197,948	87,922	110,026	20,997	34,595	52,667	85,373	44.4	55.6	10.6	17.5	26.6	43.1
	1.88 %	VAP:	149,752	72,257	77,495	15,689	23,859	35,839	58,821	48.3	51.7	10.5	15.9	23.9	39.3
Harris (4%)			197,948	87,922	110,026	20,997	34,595	52,667	85,373	44.4	55.6	10.6	17.5	26.6	43.1
DISTRICT 130	-1,700	Total:	192,603	105,268	87,335	17,929	20,167	46,304	65,275	54.7	45.3	9.3	10.5	24.0	33.9
	-0.87 %	VAP:	138,299	79,817	58,482	12,172	13,437	30,202	43,123	57.7	42.3	8.8	9.7	21.8	31.2
Harris (4%)			192,603	105,268	87,335	17,929	20,167	46,304	65,275	54.7	45.3	9.3	10.5	24.0	33.9
DISTRICT 139	4,903	Total:	199,206	27,124	172,082	12,872	69,870	89,768	157,471	13.6	86.4	6.5	35.1	45.1	79.0
	2.52 %	VAP:	145,612	22,384	123,228	10,244	51,828	60,893	111,603	15.4	84.6	7.0	35.6	41.8	76.6
Harris (4%)			199,206	27,124	172,082	12,872	69,870	89,768	157,471	13.6	86.4	6.5	35.1	45.1	79.0
DISTRICT 148	-7,199	Total:	187,104	35,992	151,112	16,498	29,636	104,826	132,614	19.2	80.8	8.8	15.8	56.0	70.9
	-3.71 %	VAP:	139,265	31,287	107,978	13,145	21,333	72,810	93,149	22.5	77.5	9.4	15.3	52.3	66.9
Harris (4%)			187,104	35,992	151,112	16,498	29,636	104,826	132,614	19.2	80.8	8.8	15.8	56.0	70.9

**Population and Voter Data
 with Voter Registration Comparison
 HOUSE DISTRICTS - PLANH2164**

District	Deviation		Population							Total Voter Registration			Non-Suspense Voter Registration				
			Total	%Anglo	%Non-Anglo	%Asian	%Black	%Hispanic	%B+H	General Election	Turnout	Total	SSVR	TO/VR	Total	SSVR	TO/VR
126	3,645	Total:	197,948	44.4	55.6	10.6	17.5	26.6	43.1	2020	90,232	125,661	14.0 %	71.8 %	114,968	14.2 %	78.5 %
	1.88%	VAP:	149,752	48.3	51.7	10.5	15.9	23.9	39.3	2018	68,376	119,133	13.1 %	57.4 %	107,341	13.3 %	63.7 %
130	-1,700	Total:	192,603	54.7	45.3	9.3	10.5	24.0	33.9	2020	89,868	119,217	13.4 %	75.4 %	111,684	13.5 %	80.5 %
	-0.87%	VAP:	138,299	57.7	42.3	8.8	9.7	21.8	31.2	2018	64,229	108,840	12.5 %	59.0 %	100,014	12.7 %	64.2 %
139	4,903	Total:	199,206	13.6	86.4	6.5	35.1	45.1	79.0	2020	65,162	104,177	21.4 %	62.5 %	96,697	21.8 %	67.4 %
	2.52%	VAP:	145,612	15.4	84.6	7.0	35.6	41.8	76.6	2018	49,103	100,896	20.1 %	48.7 %	92,158	20.5 %	53.3 %
148	-7,199	Total:	187,104	19.2	80.8	8.8	15.8	56.0	70.9	2020	54,626	86,440	32.3 %	63.2 %	79,665	32.9 %	68.6 %
	-3.71%	VAP:	139,265	22.5	77.5	9.4	15.3	52.3	66.9	2018	39,805	81,804	31.5 %	48.7 %	74,048	32.3 %	53.8 %

For technical reasons, election results in Texas Legislative Council reports may vary slightly from the official election results. Complete official results for all elections are maintained by the Office of the Texas Secretary of State.
 SSVR = Spanish surname voter registration

Plan Fit Verification
HOUSE DISTRICTS
PLANH2164 Compared with PLANH2101

The amendment fits into the base plan.

**American Community Survey Special Tabulation
 Using Census and American Community Survey Data
 HOUSE DISTRICTS - PLANH2164**

2020 Census			Special Tabulation of Citizen Voting Age Population (CVAP) from the 2017-2021 American Community Survey with Margins of Error												
			CVAP	Hispanic CVAP % Hispanic	Not Hispanic or Latino Citizen Voting Age Population (CVAP)										
District	Total	VAP			% Black Alone	% Black + White	% Black + American Indian	% White Alone	% American Indian Alone	% Asian Alone	% Native Hawaiian Alone	% American Indian + White	% Asian + White	% Remainder 2 or More Other	
126	197,948	149,752	135,775 (±5,140)	20.8 (±2.0)	15.7 (±1.6)	0.5 (±0.3)	0.2(±0.2)	53.1 (±1.3)	0.1 (±0.1)	8.4 (±1.2)	0.1 (±0.2)	0.3 (±0.1)	0.5 (±0.2)	0.3 (±0.2)	
130	192,603	138,299	117,590 (±4,723)	18.6 (±1.6)	10.0 (±1.8)	0.1 (±0.2)	0.0(±0.1)	63.7 (±1.7)	0.1 (±0.1)	6.1 (±0.9)	0.0 (±0.1)	0.4 (±0.2)	0.7 (±0.4)	0.2 (±0.2)	
139	199,206	145,612	123,125 (±4,860)	30.6 (±2.1)	42.0 (±2.4)	0.4 (±0.2)	0.4(±0.2)	18.6 (±0.8)	0.1 (±0.2)	7.0 (±1.2)	0.1 (±0.1)	0.2 (±0.1)	0.3 (±0.2)	0.3 (±0.2)	
148	187,104	139,265	102,260 (±4,179)	40.1 (±2.2)	19.5 (±2.3)	0.3 (±0.2)	0.0(±0.2)	30.1 (±1.4)	0.2 (±0.2)	9.2 (±1.3)	0.1 (±0.2)	0.2 (±0.2)	0.1 (±0.2)	0.2 (±0.2)	

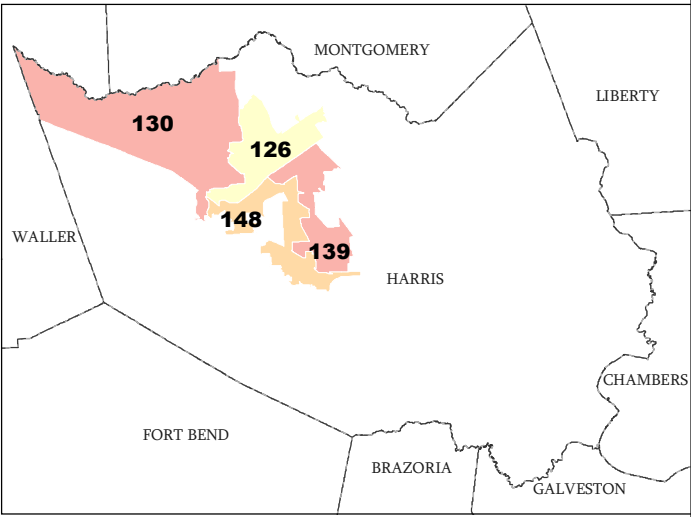
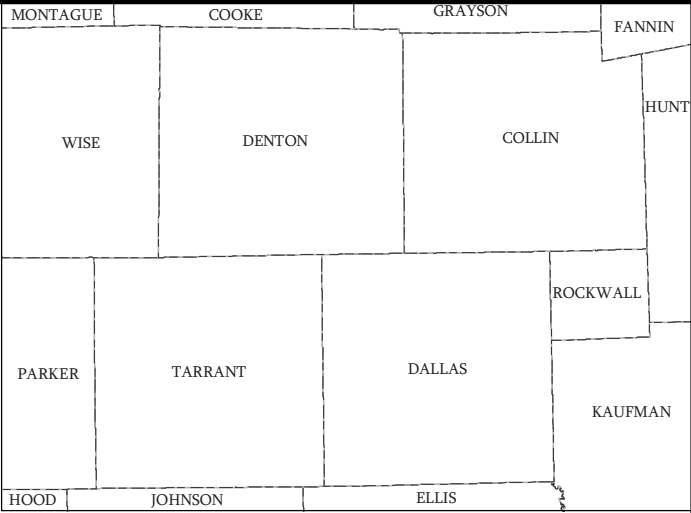
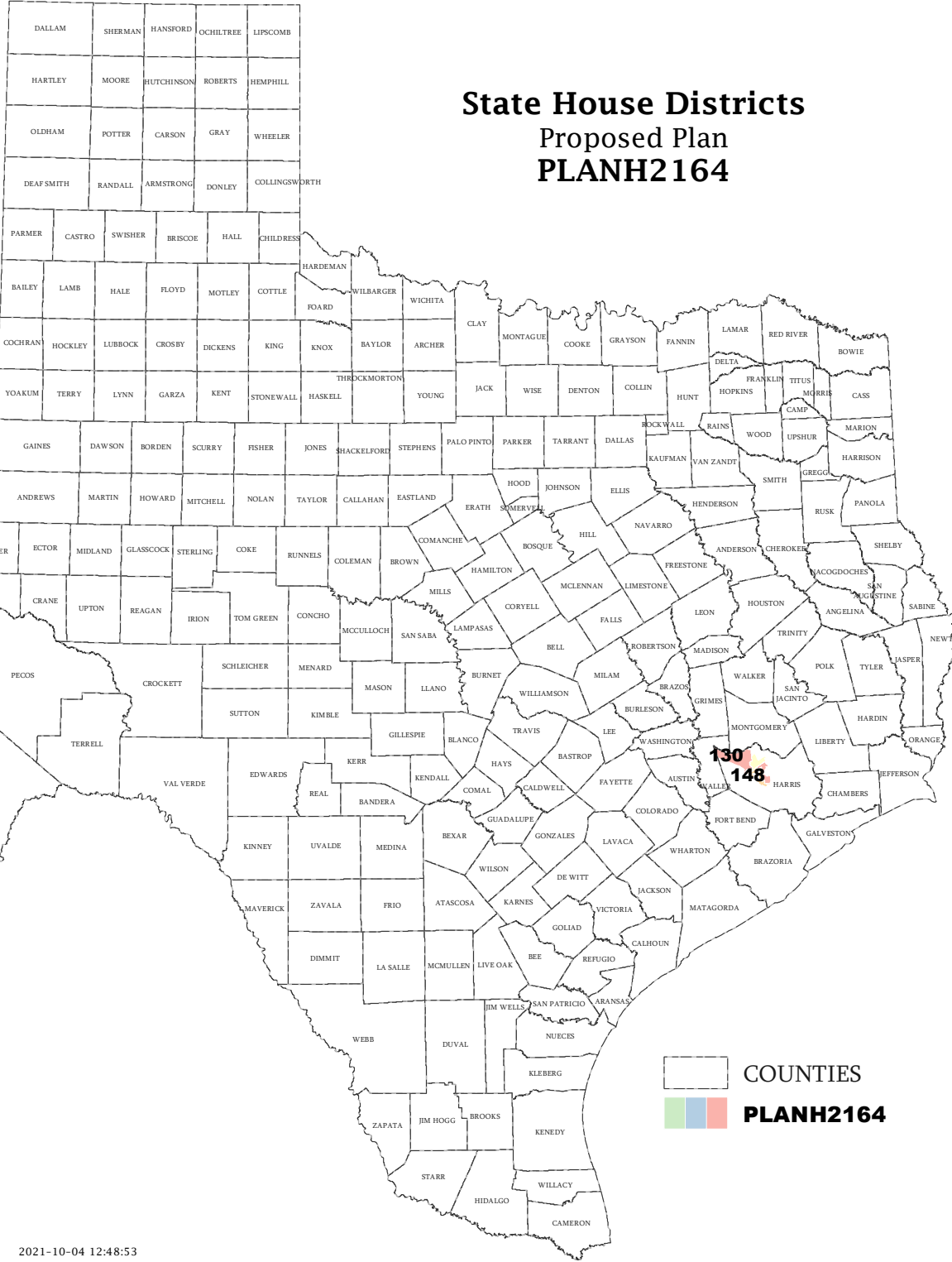
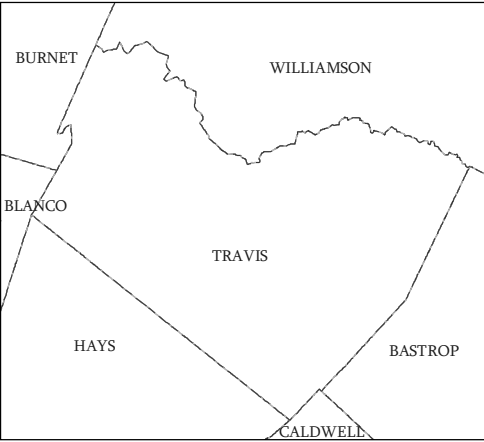
The American Community Survey provided estimated citizen voting age population (CVAP) data at the block group level in a Special Tabulation. Because the MOE can only be calculated using whole block groups, all block groups with more than 50% of the population in a district are included in the analysis. The Red-118 report provides a summary of the block groups used in the analysis.
 The percent for each CVAP population category is that group's CVAP divided by the CVAP total.
 Numbers in parentheses are margins of error at 90% confidence level.

Incumbents by District

HOUSE DISTRICTS - PLANH2164

District	Incumbents
126	Harless - R
130	Oliverson - R
139	Ja. Johnson - D
148	Morales Shaw - D

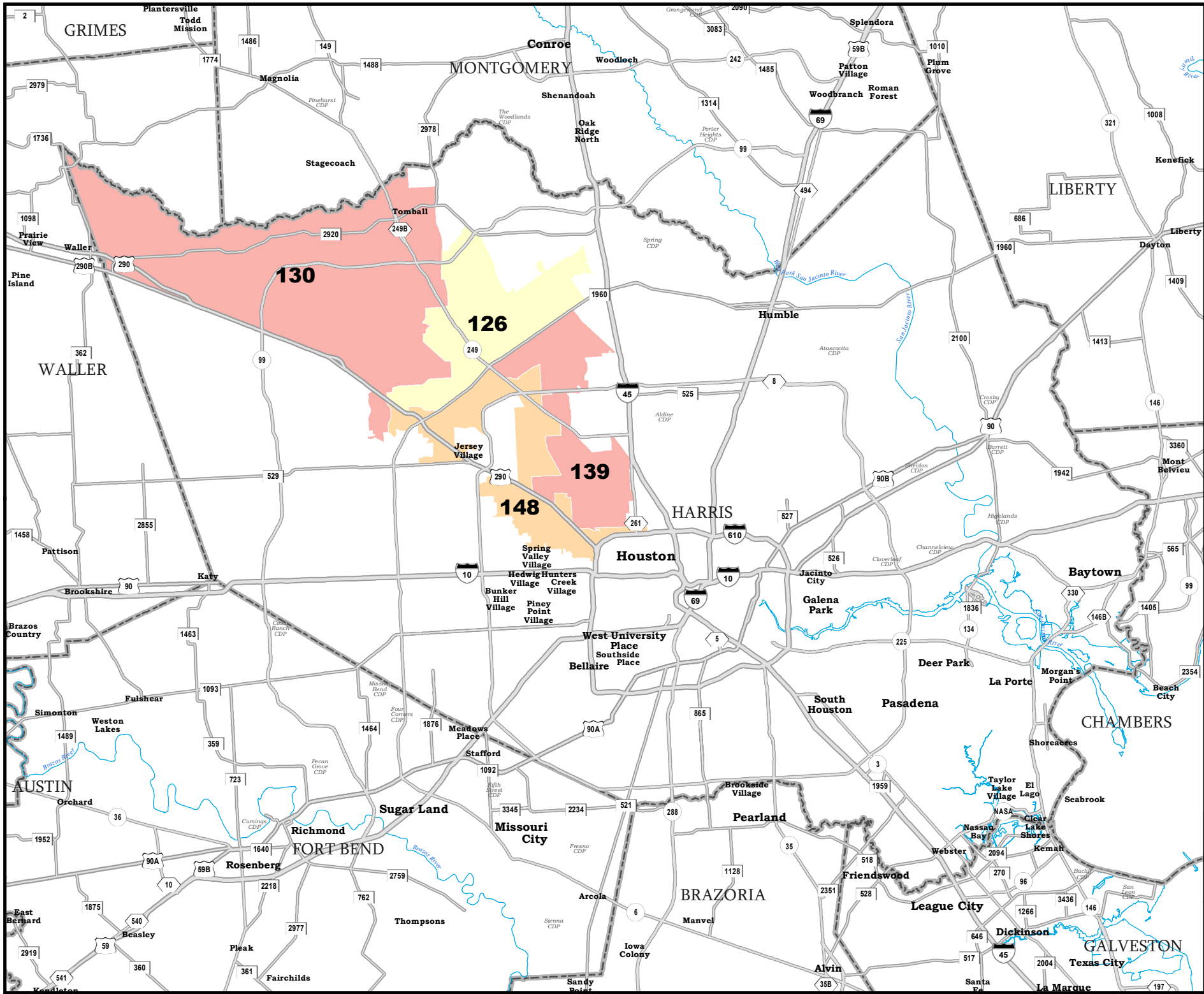
State House Districts Proposed Plan PLANH2164



COUNTIES
PLANH2164

Map ID 5900
10/04/21 12:50:28

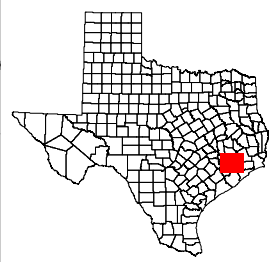





HARRIS COUNTY

State House Districts Proposed Plan PLANH2164

 COUNTIES
 PLANH2164



Map ID 5900
 10/04/21 12:50:28

 48915
 2020 Census
 PLANH2164 2021-10-04 12:48:53