

District Population Analysis with County Subtotals
HOUSE DISTRICTS - PLANH2138

Total State Population	29,145,505
Total Districts Required	150
Ideal District Population	194,303
Unassigned Population	28,344,928
Districts in Plan	4
Unassigned Geography	Yes
Districts Contiguous	Yes

	Population	-----Deviation-----	
		Total	Percent
Plan Overall Range		7,371	3.80%
Smallest District (128)	195,630	1,327	0.68%
Largest District (129)	203,001	8,698	4.48%
Average (mean)	200,144	5,841	3.01%

PLANH2138

District Population Analysis with County Subtotals

HOUSE DISTRICTS - PLANH2138

	Deviation		Total	Anglo	Non-Anglo	Asian	Black	Hispanic	B+H	%Anglo	%Non-Anglo	%Asian	%Black	%Hispanic	%B+H
DISTRICT 127	5,960	Total:	200,263	93,865	106,398	8,855	39,026	55,706	92,817	46.9	53.1	4.4	19.5	27.8	46.3
	3.07 %	VAP:	145,181	73,086	72,095	6,281	26,547	36,479	62,179	50.3	49.7	4.3	18.3	25.1	42.8
Harris (4%)			200,263	93,865	106,398	8,855	39,026	55,706	92,817	46.9	53.1	4.4	19.5	27.8	46.3
DISTRICT 128	1,327	Total:	195,630	88,132	107,498	4,884	23,434	76,606	98,348	45.1	54.9	2.5	12.0	39.2	50.3
	0.68 %	VAP:	143,994	71,226	72,768	3,621	15,995	50,349	65,592	49.5	50.5	2.5	11.1	35.0	45.6
Harris (4%)			195,630	88,132	107,498	4,884	23,434	76,606	98,348	45.1	54.9	2.5	12.0	39.2	50.3
DISTRICT 129	8,698	Total:	203,001	98,660	104,341	23,180	20,405	58,197	76,937	48.6	51.4	11.4	10.1	28.7	37.9
	4.48 %	VAP:	158,176	82,205	75,971	17,774	14,639	40,692	54,566	52.0	48.0	11.2	9.3	25.7	34.5
Harris (4%)			203,001	98,660	104,341	23,180	20,405	58,197	76,937	48.6	51.4	11.4	10.1	28.7	37.9
DISTRICT 143	7,380	Total:	201,683	20,248	181,435	2,495	26,486	153,199	177,657	10.0	90.0	1.2	13.1	76.0	88.1
	3.80 %	VAP:	144,448	17,202	127,246	1,910	19,303	105,951	124,214	11.9	88.1	1.3	13.4	73.3	86.0
Harris (4%)			201,683	20,248	181,435	2,495	26,486	153,199	177,657	10.0	90.0	1.2	13.1	76.0	88.1

**Population and Voter Data
 with Voter Registration Comparison
 HOUSE DISTRICTS - PLANH2138**

District	Deviation		Total	Population						General Election	Turnout	Total Voter Registration			Non-Suspense Voter Registration		
				%Anglo	%Non-Anglo	%Asian	%Black	%Hispanic	%B+H			Total	SSVR	TO/VR	Total	SSVR	TO/VR
127	5,960 3.07%	Total:	200,263	46.9	53.1	4.4	19.5	27.8	46.3	2020	91,481	126,892	15.6 %	72.1 %	117,341	15.9 %	78.0 %
		VAP:	145,181	50.3	49.7	4.3	18.3	25.1	42.8	2018	67,573	118,759	14.5 %	56.9 %	107,698	14.9 %	62.7 %
128	1,327 0.68%	Total:	195,630	45.1	54.9	2.5	12.0	39.2	50.3	2020	70,099	105,468	22.6 %	66.5 %	97,411	22.9 %	72.0 %
		VAP:	143,994	49.5	50.5	2.5	11.1	35.0	45.6	2018	49,812	99,195	20.9 %	50.2 %	90,292	21.3 %	55.2 %
129	8,698 4.48%	Total:	203,001	48.6	51.4	11.4	10.1	28.7	37.9	2020	91,571	127,134	16.7 %	72.0 %	116,507	16.8 %	78.6 %
		VAP:	158,176	52.0	48.0	11.2	9.3	25.7	34.5	2018	68,363	119,741	15.6 %	57.1 %	107,553	15.9 %	63.6 %
143	7,380 3.80%	Total:	201,683	10.0	90.0	1.2	13.1	76.0	88.1	2020	44,200	83,315	57.3 %	53.1 %	77,461	58.5 %	57.1 %
		VAP:	144,448	11.9	88.1	1.3	13.4	73.3	86.0	2018	32,488	80,109	56.2 %	40.6 %	73,875	57.7 %	44.0 %

For technical reasons, election results in Texas Legislative Council reports may vary slightly from the official election results. Complete official results for all elections are maintained by the Office of the Texas Secretary of State.
 SSVR = Spanish surname voter registration

Plan Fit Verification
HOUSE DISTRICTS
PLANH2138 Compared with PLANH2101

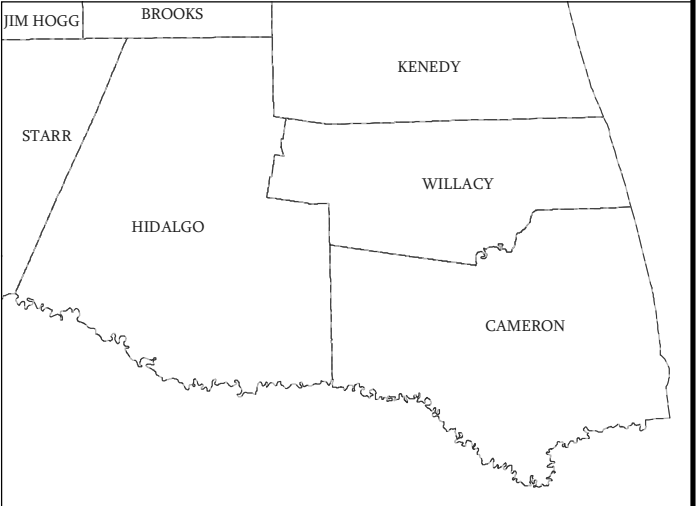
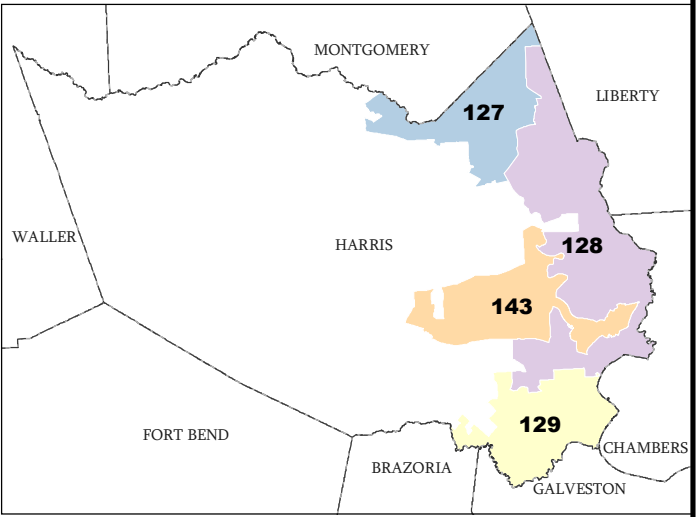
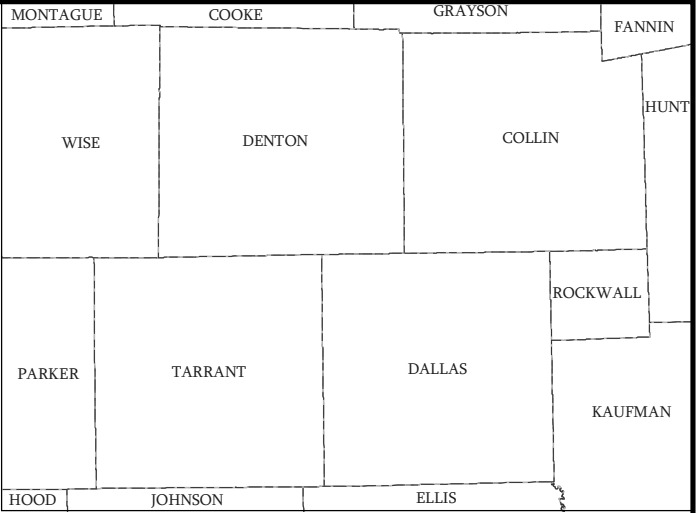
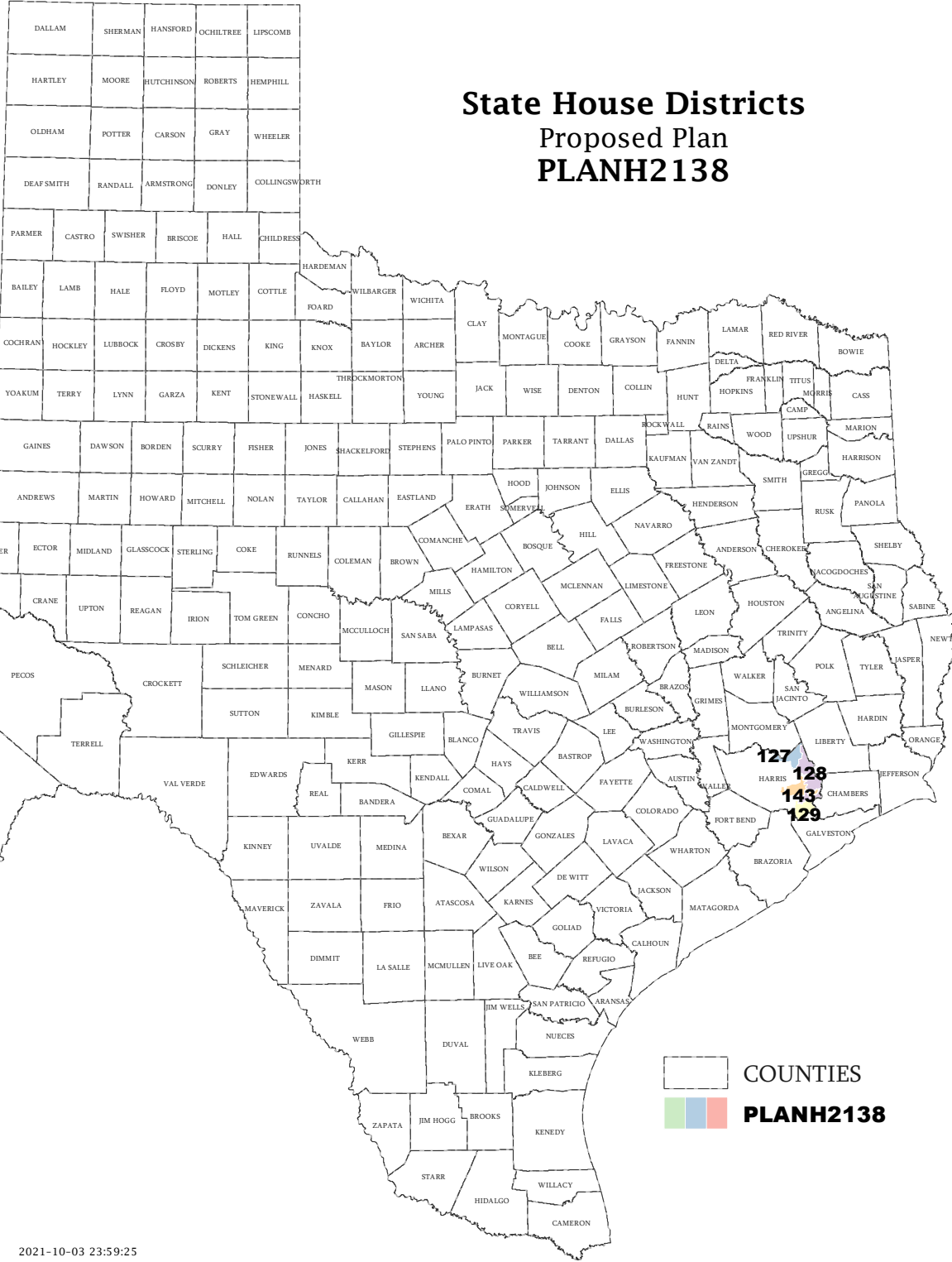
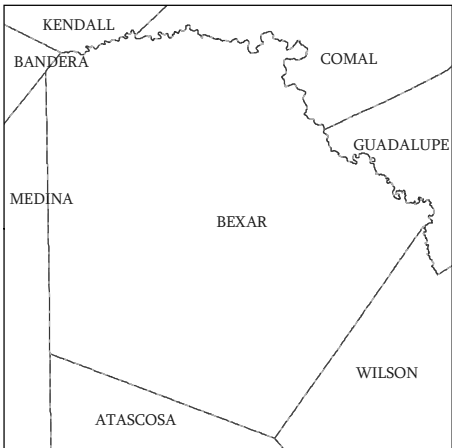
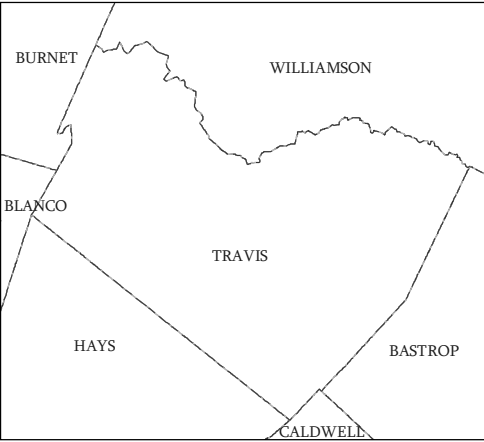
The amendment fits into the base plan.

Incumbents by District

HOUSE DISTRICTS - PLANH2138

District	Incumbents
127	Huberty - R
128	Cain - R
129	Paul - R
143	Hernandez - D

State House Districts Proposed Plan PLANH2138

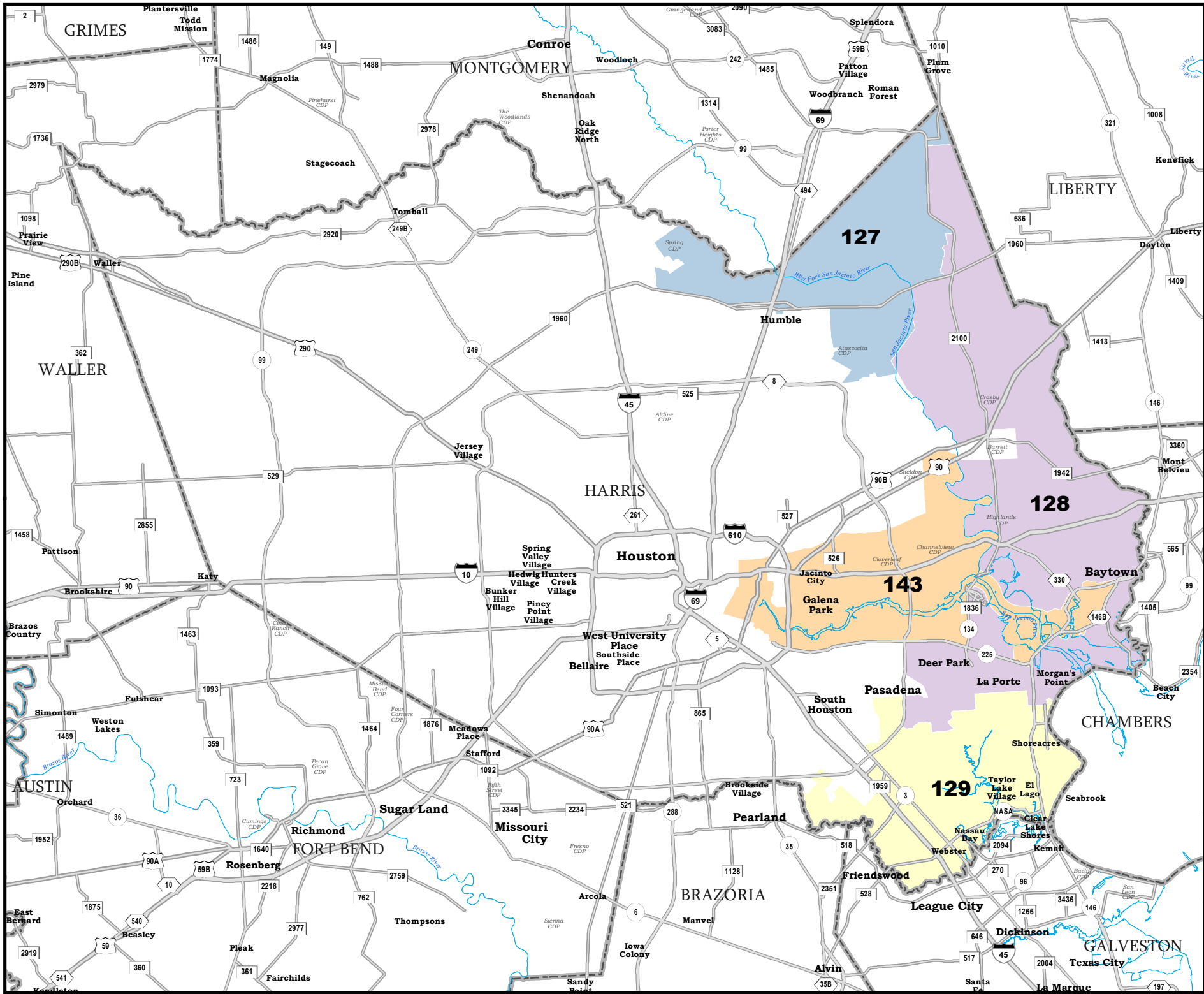


COUNTIES
PLANH2138

Map ID 5900
10/04/21 00:58:14



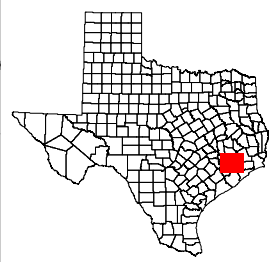
48818
2020 Census
PLANH2138 2021-10-03 23:59:25



HARRIS COUNTY

State House Districts Proposed Plan PLANH2138

 COUNTIES
 **PLANH2138**



Map ID 5900
10/04/21 00:58:14



48818
2020 Census
PLANH2138 2021-10-03 23:59:25