

District Population Analysis with County Subtotals
HOUSE DISTRICTS - PLANH2213

Total State Population	29,145,505
Total Districts Required	150
Ideal District Population	194,303
Unassigned Population	28,772,012
Districts in Plan	2
Unassigned Geography	Yes
Districts Contiguous	Yes

	Population	-----Deviation-----	
		Total	Percent
Plan Overall Range		2,681	1.38%
Smallest District (83)	185,406	-8,897	-4.58%
Largest District (84)	188,087	-6,216	-3.20%
Average (mean)	186,747	7,557	3.89%

PLANH2213

District Population Analysis with County Subtotals

HOUSE DISTRICTS - PLANH2213

	Deviation		Total	Anglo	Non-Anglo	Asian	Black	Hispanic	B+H	%Anglo	%Non-Anglo	%Asian	%Black	%Hispanic	%B+H
DISTRICT 83	-8,897	Total:	185,406	105,072	80,334	3,560	9,108	65,141	72,975	56.7	43.3	1.9	4.9	35.1	39.4
	-4.58 %	VAP:	138,389	83,101	55,288	2,412	6,090	44,088	49,749	60.0	40.0	1.7	4.4	31.9	35.9
Borden (100%)			631	528	103	14	16	86	95	83.7	16.3	2.2	2.5	13.6	15.1
Crosby (100%)			5,133	2,076	3,057	41	203	2,829	2,965	40.4	59.6	0.8	4.0	55.1	57.8
Dickens (100%)			1,770	1,178	592	21	64	512	548	66.6	33.4	1.2	3.6	28.9	31.0
Floyd (100%)			5,402	2,079	3,323	39	207	3,067	3,228	38.5	61.5	0.7	3.8	56.8	59.8
Garza (100%)			5,816	2,162	3,654	56	381	3,272	3,554	37.2	62.8	1.0	6.6	56.3	61.1
Kent (100%)			753	657	96	9	11	81	86	87.3	12.7	1.2	1.5	10.8	11.4
Lubbock (39%)			122,552	75,868	46,684	3,057	5,651	35,780	40,698	61.9	38.1	2.5	4.6	29.2	33.2
Lynn (100%)			5,596	2,960	2,636	34	151	2,352	2,482	52.9	47.1	0.6	2.7	42.0	44.4
Mitchell (100%)			8,990	4,328	4,662	71	1,072	3,454	4,457	48.1	51.9	0.8	11.9	38.4	49.6
Scurry (100%)			16,932	8,637	8,295	140	812	7,139	7,853	51.0	49.0	0.8	4.8	42.2	46.4
Terry (100%)			11,831	4,599	7,232	78	540	6,569	7,009	38.9	61.1	0.7	4.6	55.5	59.2
DISTRICT 84	-6,216	Total:	188,087	79,126	108,961	8,476	25,456	73,390	96,631	42.1	57.9	4.5	13.5	39.0	51.4
	-3.20 %	VAP:	146,585	67,250	79,335	7,089	18,515	51,327	69,009	45.9	54.1	4.8	12.6	35.0	47.1
Lubbock (61%)			188,087	79,126	108,961	8,476	25,456	73,390	96,631	42.1	57.9	4.5	13.5	39.0	51.4

**Population and Voter Data
 with Voter Registration Comparison
 HOUSE DISTRICTS - PLANH2213**

District	Deviation		Population								Total Voter Registration			Non-Suspense Voter Registration			
			Total	%Anglo	%Non-Anglo	%Asian	%Black	%Hispanic	%B+H	General Election	Turnout	Total	SSVR	TO/VR	Total	SSVR	TO/VR
83	-8,897	Total:	185,406	56.7	43.3	1.9	4.9	35.1	39.4	2020	77,530	114,444	24.4 %	67.7 %	103,543	24.0 %	74.9 %
	-4.58%	VAP:	138,389	60.0	40.0	1.7	4.4	31.9	35.9	2018	58,326	108,746	24.2 %	53.6 %	96,915	23.9 %	60.2 %
84	-6,216	Total:	188,087	42.1	57.9	4.5	13.5	39.0	51.4	2020	65,252	105,888	28.8 %	61.6 %	89,585	28.8 %	72.8 %
	-3.20%	VAP:	146,585	45.9	54.1	4.8	12.6	35.0	47.1	2018	50,184	103,614	28.7 %	48.4 %	86,338	28.9 %	58.1 %

Plan Fit Verification
HOUSE DISTRICTS
PLANH2213 Compared with PLANH2176

The amendment fits into the base plan.

American Community Survey Special Tabulation
 Using Census and American Community Survey Data
HOUSE DISTRICTS - PLANH2213

2020 Census			Special Tabulation of Citizen Voting Age Population (CVAP) from the 2017-2021 American Community Survey with Margins of Error												
			CVAP	Hispanic CVAP % Hispanic	Not Hispanic or Latino Citizen Voting Age Population (CVAP)										
District	Total	VAP			% Black Alone	% Black + White	% Black + American Indian	% White Alone	% American Indian Alone	% Asian Alone	% Native Hawaiian Alone	% American Indian + White	% Asian + White	% Remainder 2 or More Other	
83	185,406	138,389	129,795 (±3,431)	32.0 (±1.6)	3.5 (±0.6)	0.3 (±0.2)	0.1(±0.1)	62.3 (±1.1)	0.2 (±0.1)	0.7 (±0.2)	0.0 (±0.1)	0.5 (±0.2)	0.2 (±0.2)	0.1 (±0.1)	
84	188,087	146,585	138,230 (±4,255)	34.8 (±1.5)	8.6 (±0.8)	0.5 (±0.2)	0.1(±0.1)	53.1 (±1.5)	0.3 (±0.2)	1.5 (±0.3)	0.1 (±0.1)	0.6 (±0.2)	0.3 (±0.1)	0.2 (±0.2)	

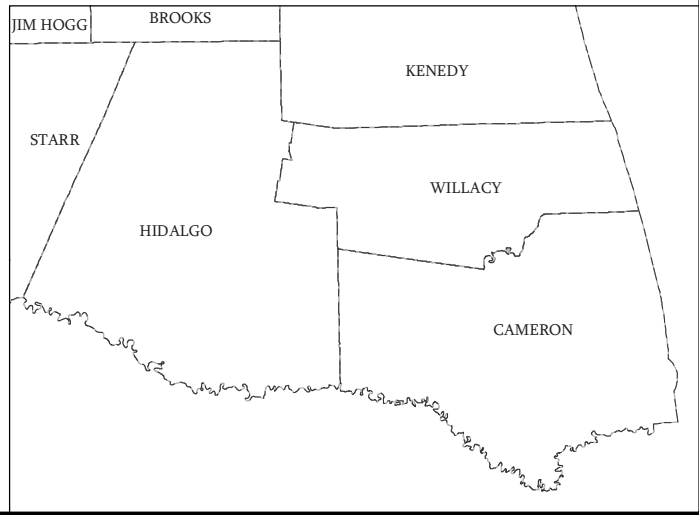
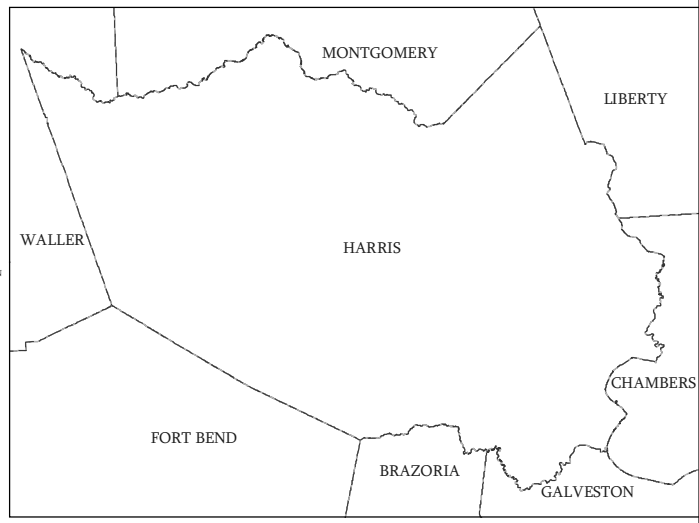
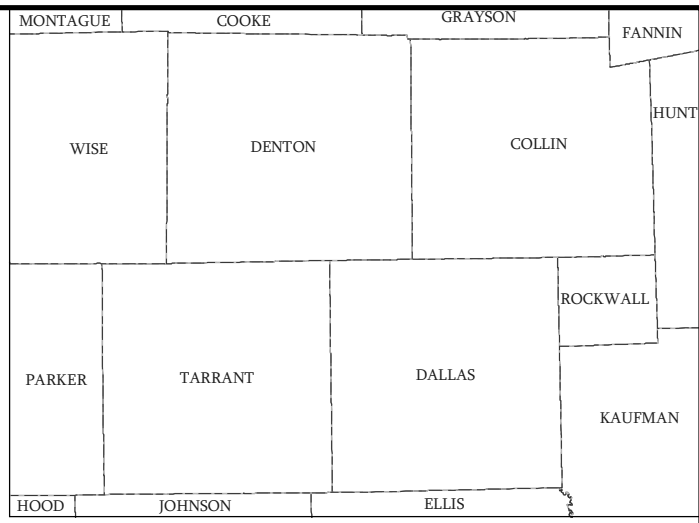
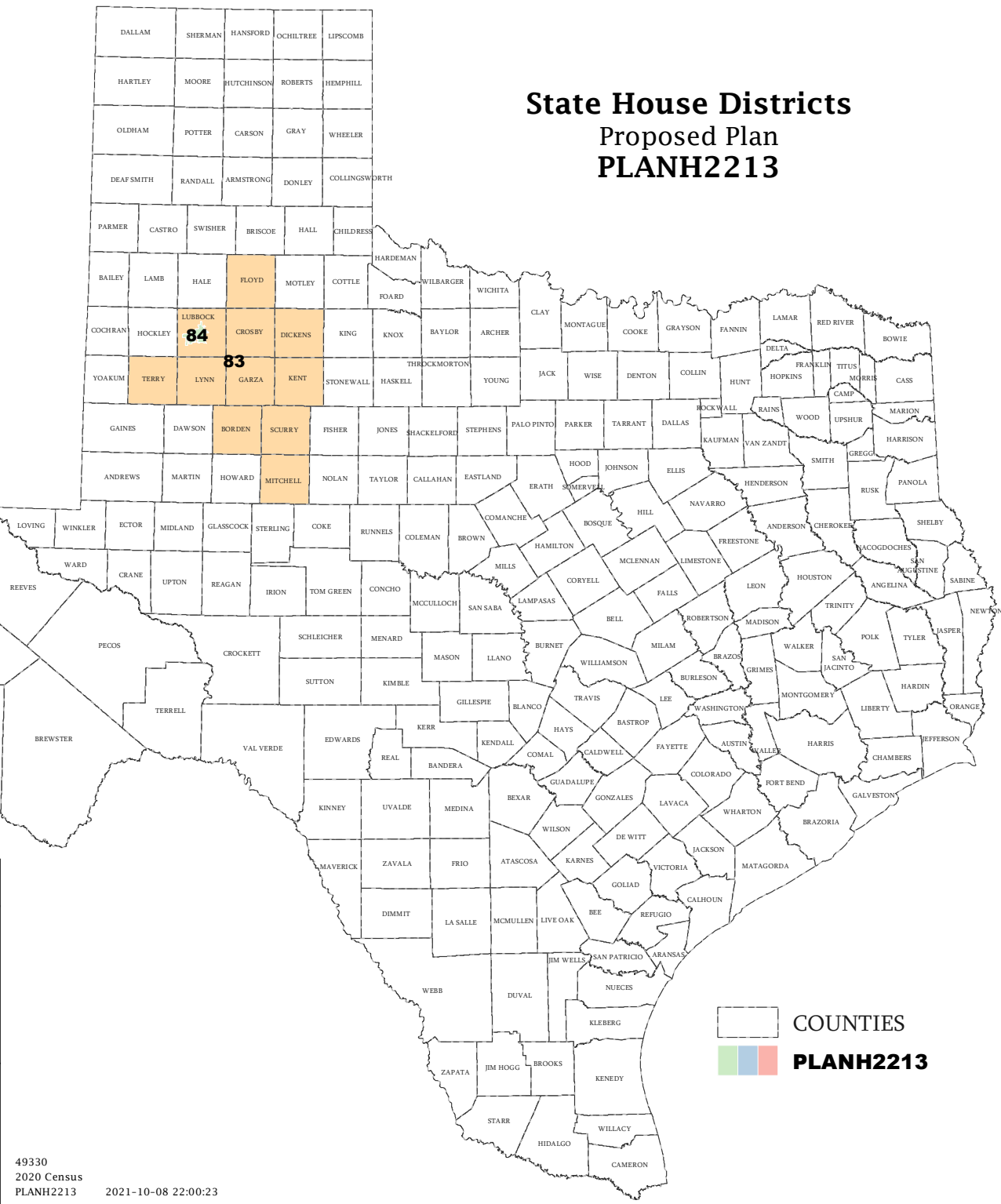
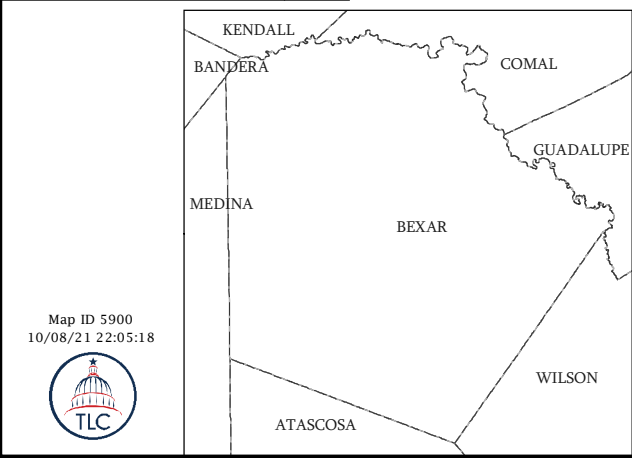
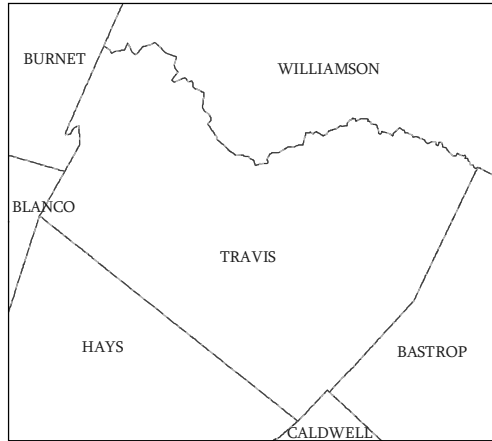
The American Community Survey provided estimated citizen voting age population (CVAP) data at the block group level in a Special Tabulation. Because the MOE can only be calculated using whole block groups, all block groups with more than 50% of the population in a district are included in the analysis. The Red-118 report provides a summary of the block groups used in the analysis.
 The percent for each CVAP population category is that group's CVAP divided by the CVAP total.
 Numbers in parentheses are margins of error at 90% confidence level.

Incumbents by District

HOUSE DISTRICTS - PLANH2213

District	Incumbents
83	Burrows - R
84	Tepper - R

State House Districts Proposed Plan PLANH2213

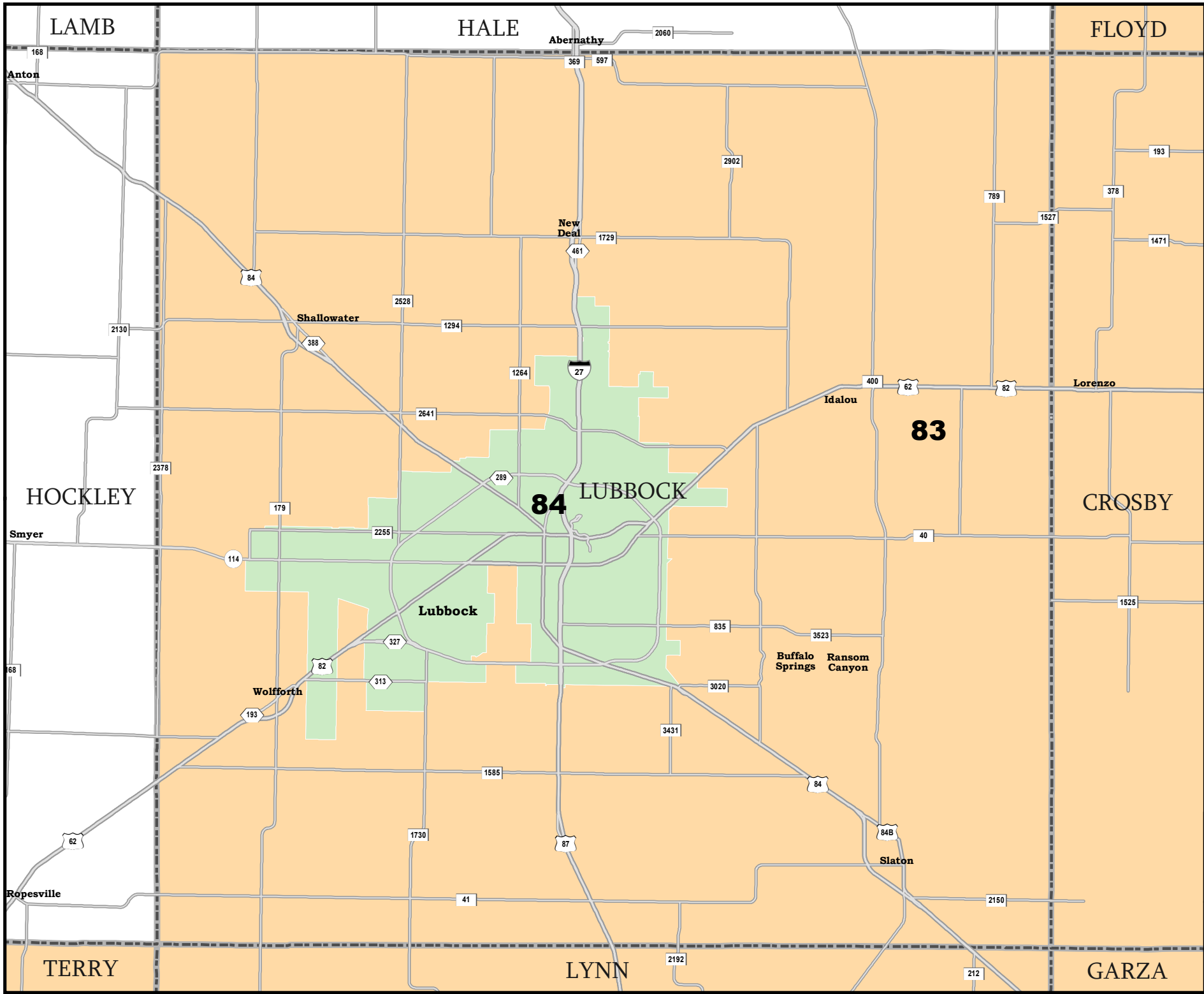


COUNTIES
 PLANH2213

Map ID 5900
10/08/21 22:05:18



49330
2020 Census
PLANH2213 2021-10-08 22:00:23



LUBBOCK COUNTY

State House Districts Proposed Plan PLANH2213

-  COUNTIES
-  PLANH2213

