

District Population Analysis with County Subtotals
HOUSE DISTRICTS - PLANH2170

Total State Population	29,145,505
Total Districts Required	150
Ideal District Population	194,303
Unassigned Population	28,757,134
Districts in Plan	2
Unassigned Geography	Yes
Districts Contiguous	Yes

	Population	-----Deviation-----	
		Total	Percent
Plan Overall Range		3,165	1.62%
Smallest District (130)	192,603	-1,700	-0.87%
Largest District (126)	195,768	1,465	0.75%
Average (mean)	194,186	1,583	0.81%

PLANH2170

District Population Analysis with County Subtotals

HOUSE DISTRICTS - PLANH2170

	Deviation		Total	Anglo	Non-Anglo	Asian	Black	Hispanic	B+H	%Anglo	%Non-Anglo	%Asian	%Black	%Hispanic	%B+H
DISTRICT 126	1,465	Total:	195,768	86,748	109,020	21,038	34,568	51,717	84,411	44.3	55.7	10.7	17.7	26.4	43.1
	0.75 %	VAP:	148,392	71,394	76,998	15,753	23,986	35,210	58,312	48.1	51.9	10.6	16.2	23.7	39.3
Harris (4%)			195,768	86,748	109,020	21,038	34,568	51,717	84,411	44.3	55.7	10.7	17.7	26.4	43.1
DISTRICT 130	-1,700	Total:	192,603	105,268	87,335	17,929	20,167	46,304	65,275	54.7	45.3	9.3	10.5	24.0	33.9
	-0.87 %	VAP:	138,299	79,817	58,482	12,172	13,437	30,202	43,123	57.7	42.3	8.8	9.7	21.8	31.2
Harris (4%)			192,603	105,268	87,335	17,929	20,167	46,304	65,275	54.7	45.3	9.3	10.5	24.0	33.9

**Population and Voter Data
 with Voter Registration Comparison
 HOUSE DISTRICTS - PLANH2170**

District	Deviation		Population								Total Voter Registration			Non-Suspense Voter Registration			
			Total	%Anglo	%Non-Anglo	%Asian	%Black	%Hispanic	%B+H	General Election	Turnout	Total	SSVR	TO/VR	Total	SSVR	TO/VR
126	1,465 0.75%	Total:	195,768	44.3	55.7	10.7	17.7	26.4	43.1	2020	89,431	124,379	13.8 %	71.9 %	113,676	13.9 %	78.7 %
		VAP:	148,392	48.1	51.9	10.6	16.2	23.7	39.3	2018	67,862	117,896	12.8 %	57.6 %	106,120	13.0 %	63.9 %
130	-1,700 -0.87%	Total:	192,603	54.7	45.3	9.3	10.5	24.0	33.9	2020	89,868	119,217	13.4 %	75.4 %	111,684	13.5 %	80.5 %
		VAP:	138,299	57.7	42.3	8.8	9.7	21.8	31.2	2018	64,229	108,840	12.5 %	59.0 %	100,014	12.7 %	64.2 %

For technical reasons, election results in Texas Legislative Council reports may vary slightly from the official election results. Complete official results for all elections are maintained by the Office of the Texas Secretary of State.
 SSVR = Spanish surname voter registration

Plan Fit Verification
HOUSE DISTRICTS
PLANH2170 Compared with PLANH2101

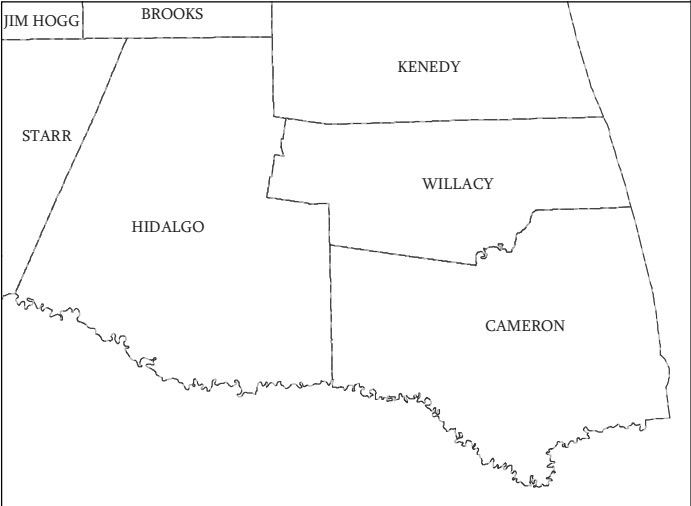
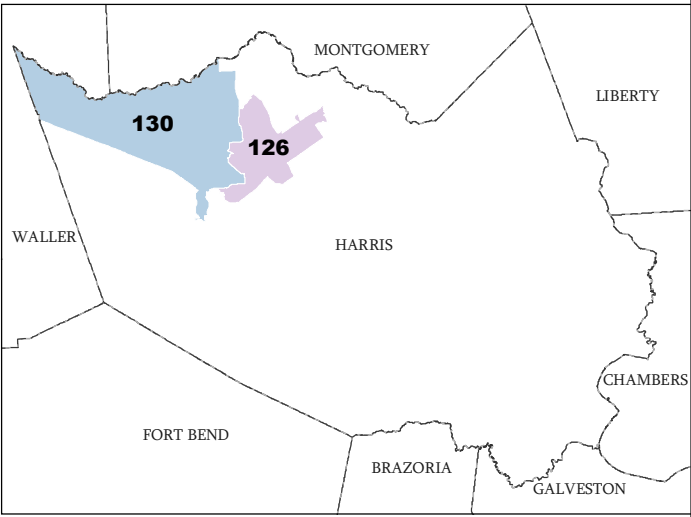
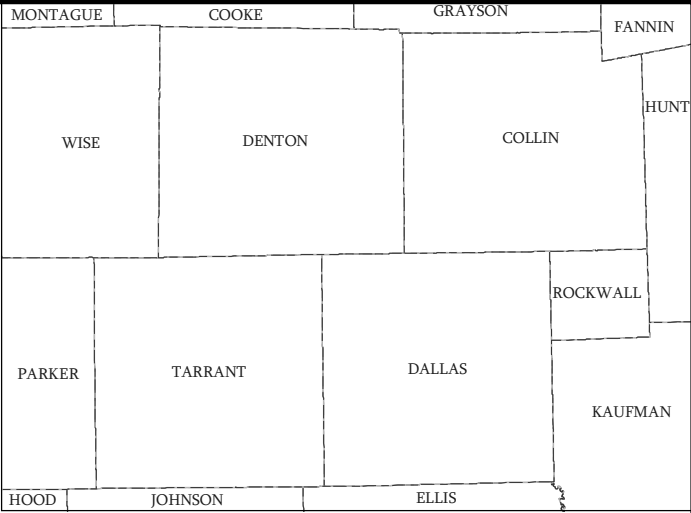
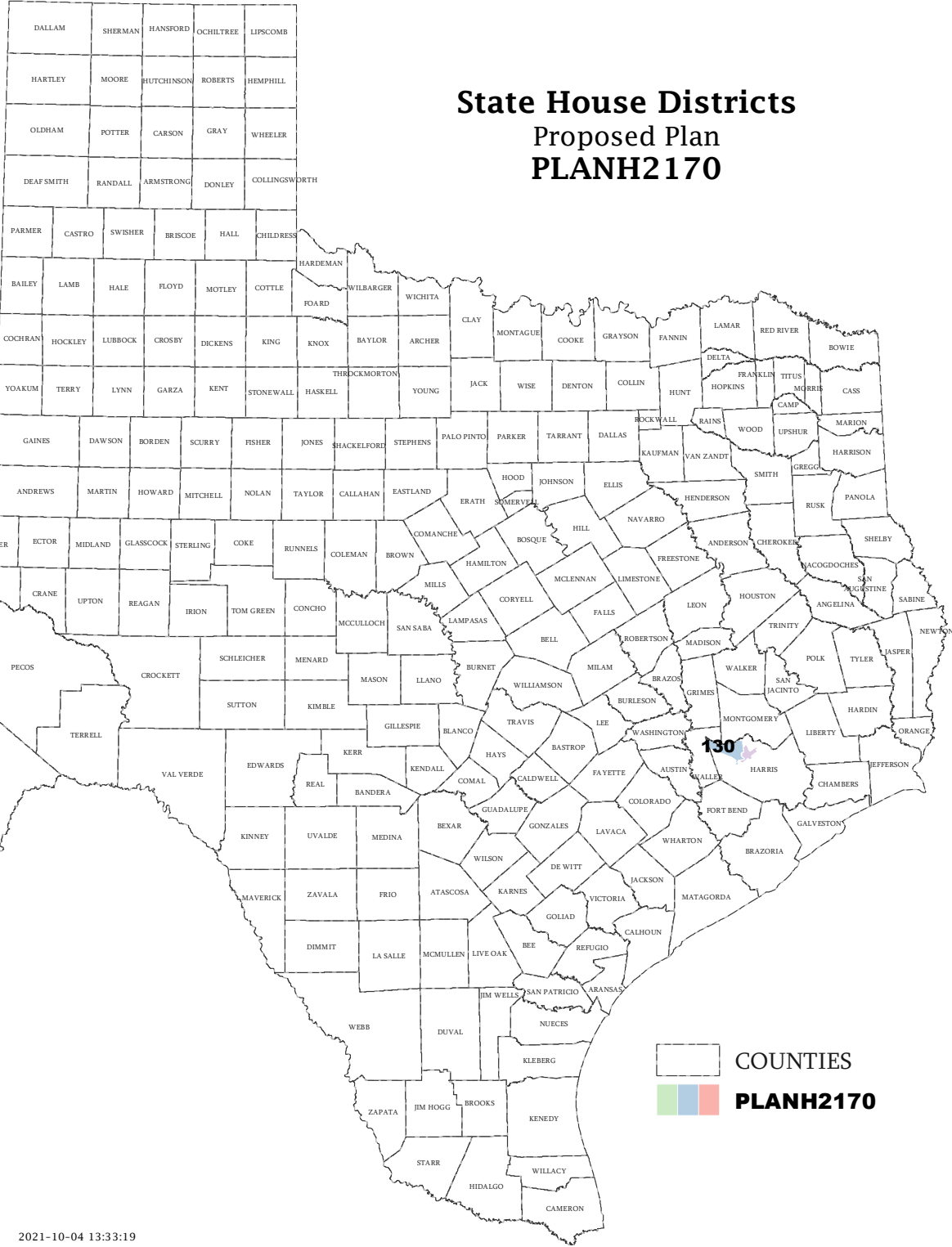
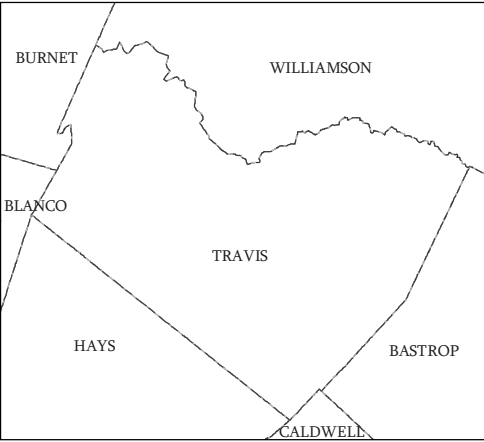
The amendment fits into the base plan.

Incumbents by District

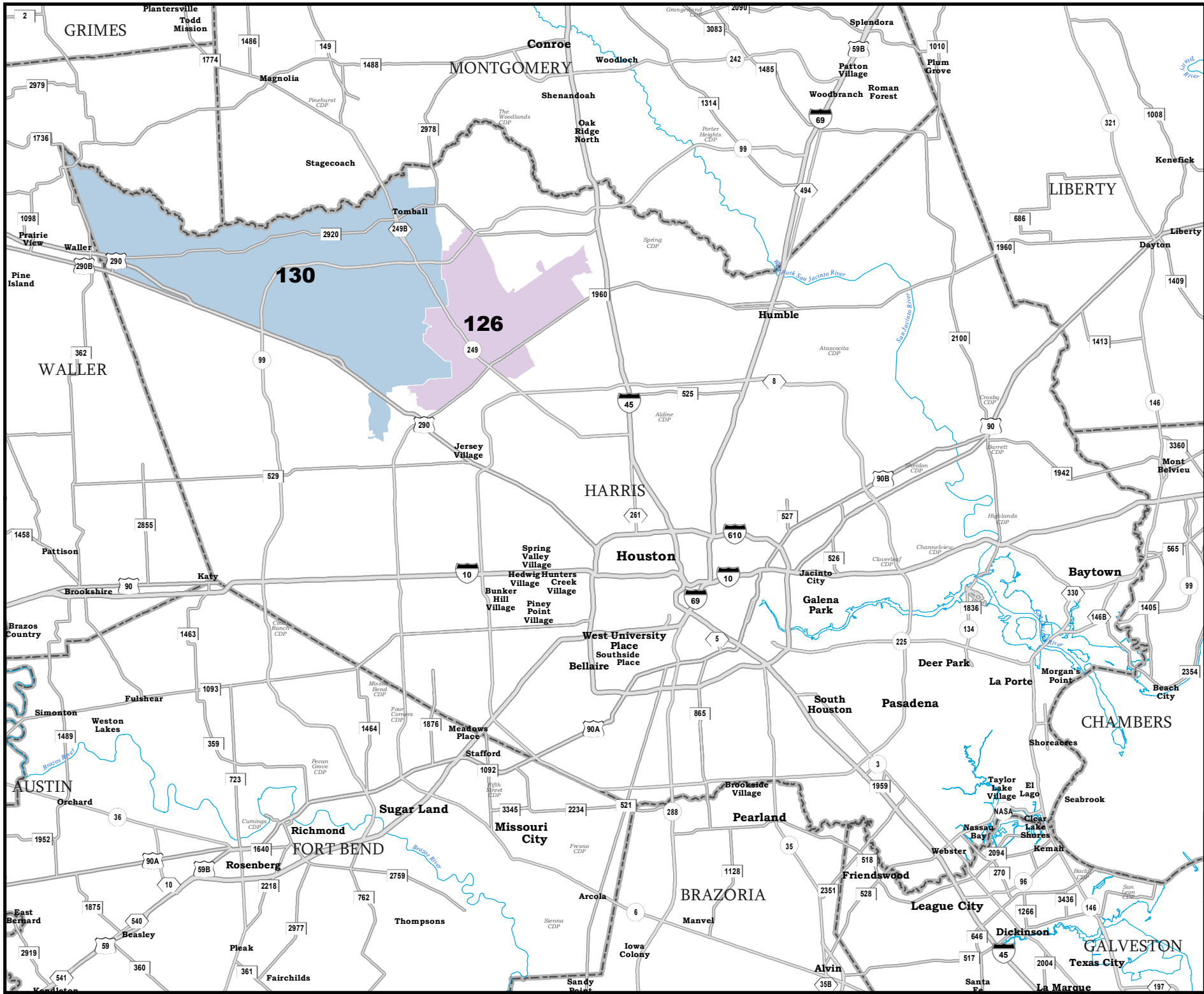
HOUSE DISTRICTS - PLANH2170

District	Incumbents
126	Harless - R
130	Oliverson - R

State House Districts Proposed Plan PLANH2170



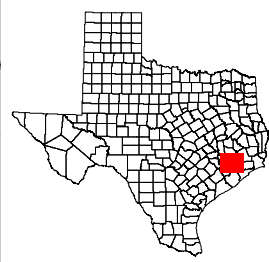
COUNTIES
PLANH2170



HARRIS COUNTY

State House Districts Proposed Plan PLANH2170

 COUNTIES
 PLANH2170



Map ID 5900
 10/04/21 13:35:26
 48927
 2020 Census
 PLANH2170 2021-10-04 13:33:19
