

District Population Analysis with County Subtotals  
**HOUSE DISTRICTS - PLANH2170**

Total State Population	29,145,505
Total Districts Required	150
Ideal District Population	194,303
Unassigned Population	28,757,134
Districts in Plan	2
Unassigned Geography	Yes
Districts Contiguous	Yes

	<b>Population</b>	<b>-----Deviation-----</b>	
		<b>Total</b>	<b>Percent</b>
Plan Overall Range		3,165	1.62%
Smallest District (130)	192,603	-1,700	-0.87%
Largest District (126)	195,768	1,465	0.75%
Average (mean)	194,186	1,583	0.81%

PLANH2170

## District Population Analysis with County Subtotals

### HOUSE DISTRICTS - PLANH2170

	Deviation		Total	Anglo	Non-Anglo	Asian	Black	Hispanic	B+H	%Anglo	%Non-Anglo	%Asian	%Black	%Hispanic	%B+H
<b>DISTRICT 126</b>	1,465	Total:	195,768	86,748	109,020	21,038	34,568	51,717	84,411	44.3	55.7	10.7	17.7	26.4	43.1
	0.75 %	VAP:	148,392	71,394	76,998	15,753	23,986	35,210	58,312	48.1	51.9	10.6	16.2	23.7	39.3
Harris (4%)			195,768	86,748	109,020	21,038	34,568	51,717	84,411	44.3	55.7	10.7	17.7	26.4	43.1
<b>DISTRICT 130</b>	-1,700	Total:	192,603	105,268	87,335	17,929	20,167	46,304	65,275	54.7	45.3	9.3	10.5	24.0	33.9
	-0.87 %	VAP:	138,299	79,817	58,482	12,172	13,437	30,202	43,123	57.7	42.3	8.8	9.7	21.8	31.2
Harris (4%)			192,603	105,268	87,335	17,929	20,167	46,304	65,275	54.7	45.3	9.3	10.5	24.0	33.9

**Population and Voter Data  
 with Voter Registration Comparison  
 HOUSE DISTRICTS - PLANH2170**

District	Deviation		Total	Population						General Election	Turnout	Total Voter Registration			Non-Suspense Voter Registration		
				%Anglo	%Non-Anglo	%Asian	%Black	%Hispanic	%B+H			Total	SSVR	TO/VR	Total	SSVR	TO/VR
126	1,465 0.75%	Total:	195,768	44.3	55.7	10.7	17.7	26.4	43.1	2020	89,431	124,379	13.8 %	71.9 %	113,676	13.9 %	78.7 %
		VAP:	148,392	48.1	51.9	10.6	16.2	23.7	39.3	2018	67,862	117,896	12.8 %	57.6 %	106,120	13.0 %	63.9 %
130	-1,700 -0.87%	Total:	192,603	54.7	45.3	9.3	10.5	24.0	33.9	2020	89,868	119,217	13.4 %	75.4 %	111,684	13.5 %	80.5 %
		VAP:	138,299	57.7	42.3	8.8	9.7	21.8	31.2	2018	64,229	108,840	12.5 %	59.0 %	100,014	12.7 %	64.2 %

**Plan Fit Verification**  
**HOUSE DISTRICTS**  
**PLANH2170 Compared with PLANH2101**

**The amendment fits into the base plan.**

American Community Survey Special Tabulation  
 Using Census and American Community Survey Data  
**HOUSE DISTRICTS - PLANH2170**

2020 Census			Special Tabulation of Citizen Voting Age Population (CVAP) from the 2017-2021 American Community Survey with Margins of Error												
			CVAP	Hispanic CVAP % Hispanic	Not Hispanic or Latino Citizen Voting Age Population (CVAP)										
District	Total	VAP			% Black Alone	% Black + White	% Black + American Indian	% White Alone	% American Indian Alone	% Asian Alone	% Native Hawaiian Alone	% American Indian + White	% Asian + White	% Remainder 2 or More Other	
126	195,768	148,392	134,075 (±5,131)	20.6 (±2.1)	15.9 (±1.7)	0.6 (±0.3)	0.2(±0.2)	53.0 (±1.3)	0.1 (±0.1)	8.5 (±1.3)	0.1 (±0.2)	0.3 (±0.2)	0.5 (±0.3)	0.3 (±0.2)	
130	192,603	138,299	117,590 (±4,723)	18.6 (±1.6)	10.0 (±1.8)	0.1 (±0.2)	0.0(±0.1)	63.7 (±1.7)	0.1 (±0.1)	6.1 (±0.9)	0.0 (±0.1)	0.4 (±0.2)	0.7 (±0.4)	0.2 (±0.2)	

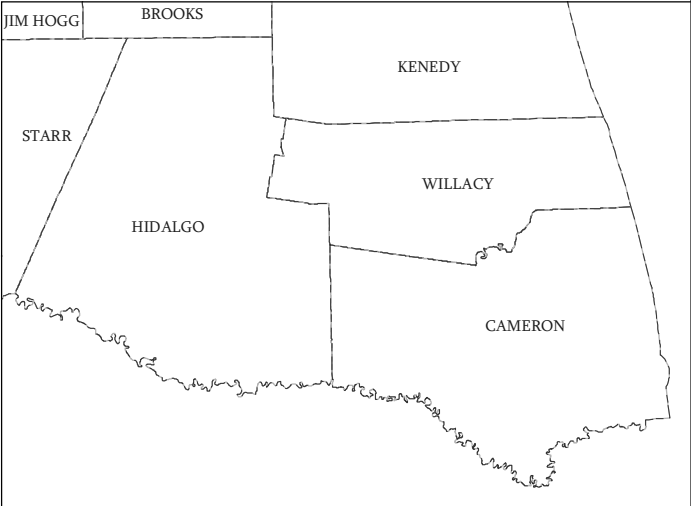
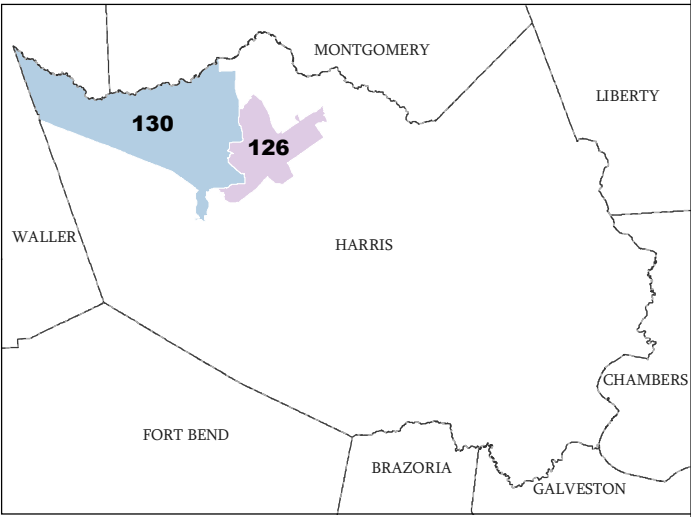
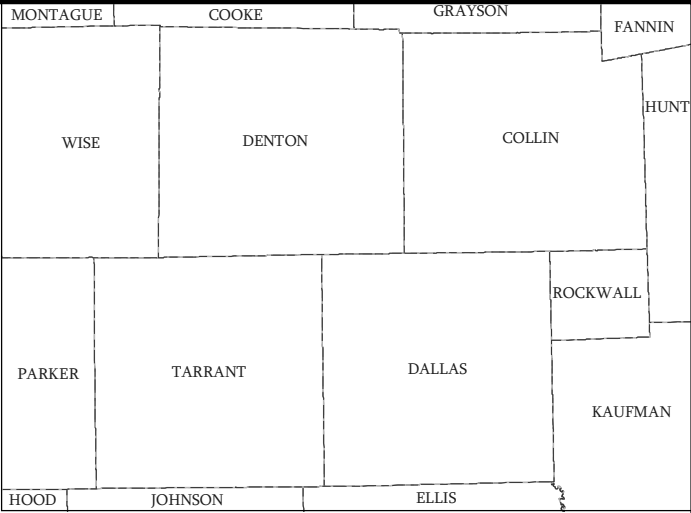
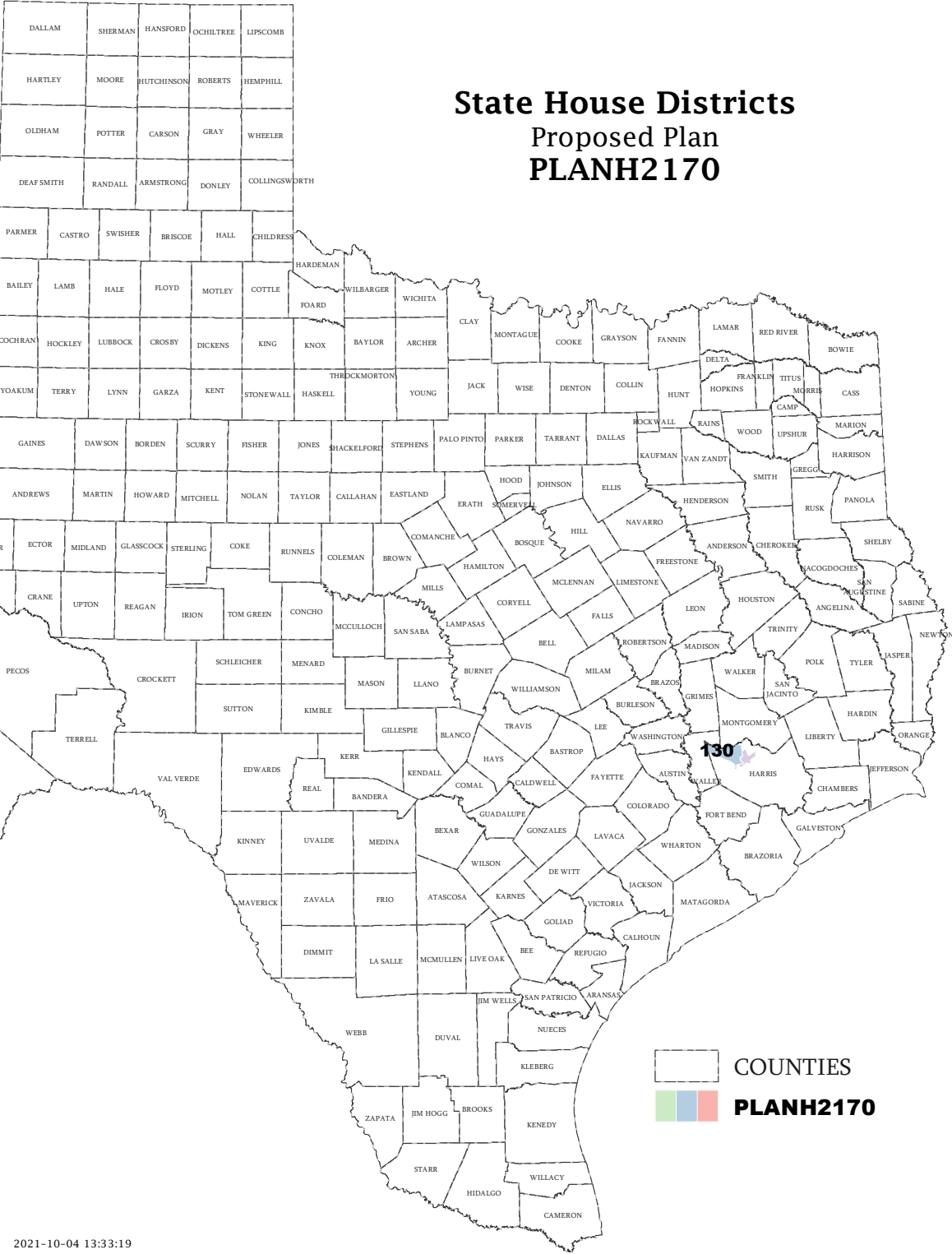
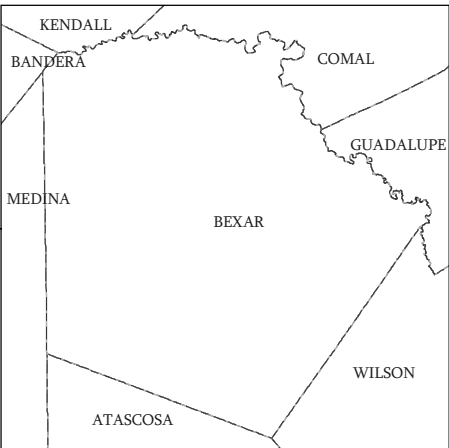
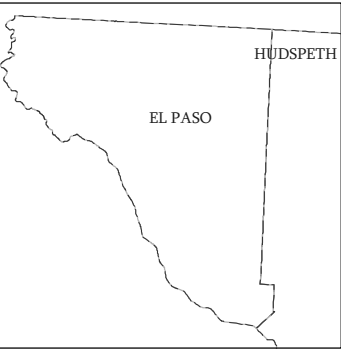
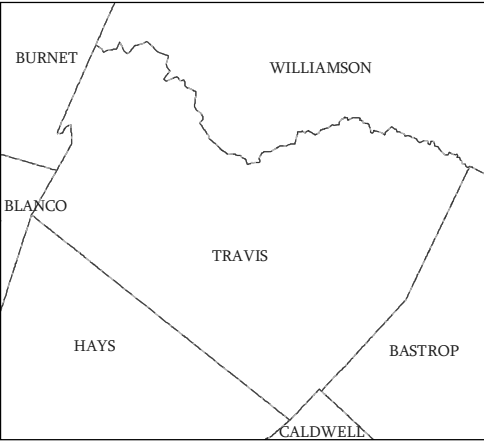
The American Community Survey provided estimated citizen voting age population (CVAP) data at the block group level in a Special Tabulation. Because the MOE can only be calculated using whole block groups, all block groups with more than 50% of the population in a district are included in the analysis. The Red-118 report provides a summary of the block groups used in the analysis.  
 The percent for each CVAP population category is that group's CVAP divided by the CVAP total.  
 Numbers in parentheses are margins of error at 90% confidence level.

# Incumbents by District

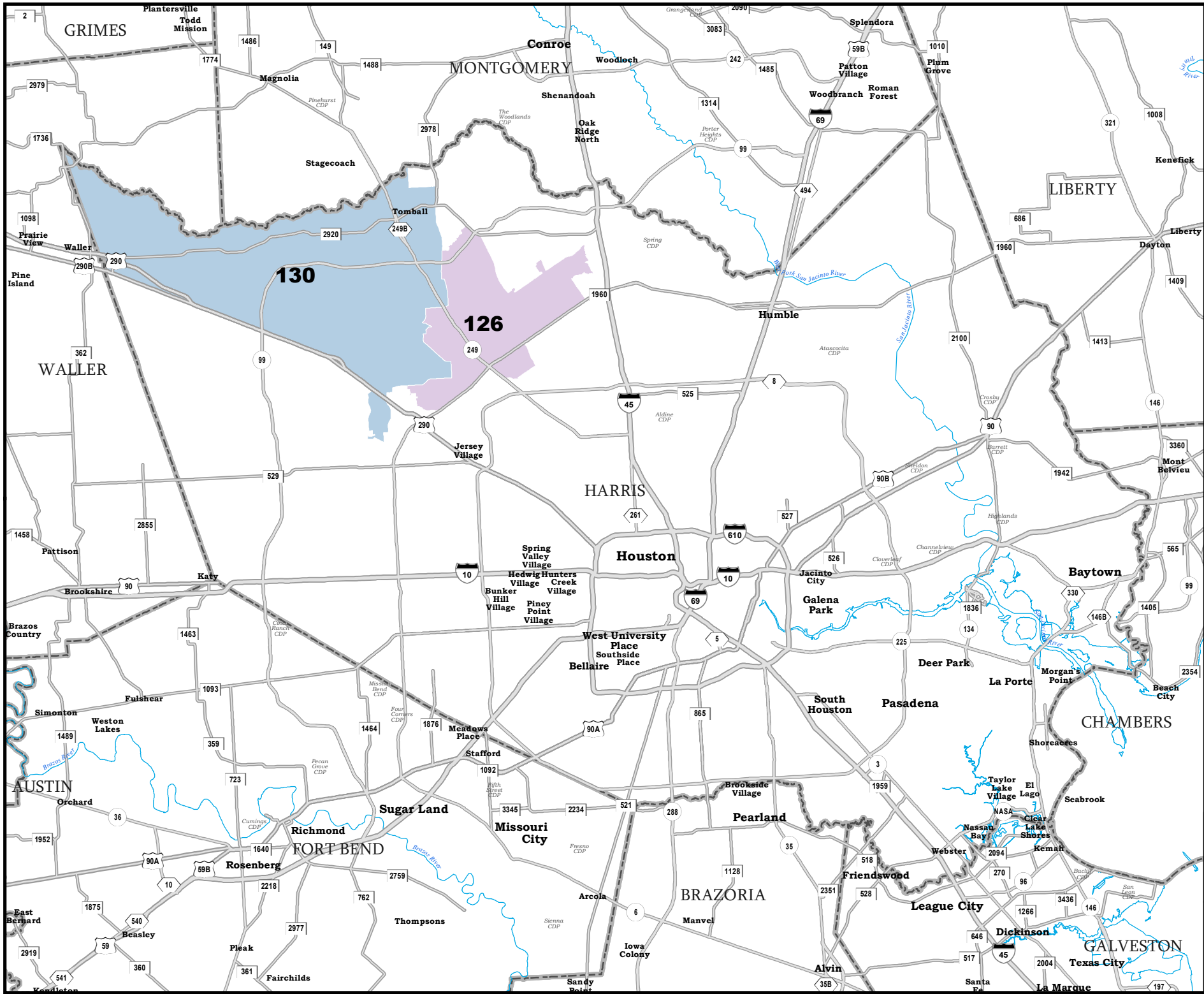
## HOUSE DISTRICTS - PLANH2170

District	Incumbents
126	Harless - R
130	Oliverson - R

# State House Districts Proposed Plan PLANH2170



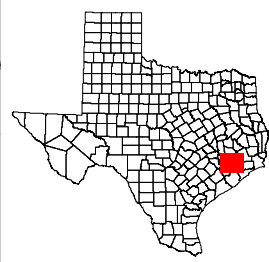
**COUNTIES**  
**PLANH2170**



# HARRIS COUNTY

## State House Districts Proposed Plan PLANH2170

 COUNTIES  
 **PLANH2170**



48927  
 2020 Census  
 PLANH2170 2021-10-04 13:33:19

Map ID 5900  
 10/04/21 13:35:26  
