

District Population Analysis with County Subtotals
SENATE DISTRICTS - PLANS2118

Total State Population	29,145,505
Total Districts Required	31
Ideal District Population	940,178
Unassigned Population	26,288,312
Districts in Plan	3
Unassigned Geography	Yes
Districts Contiguous	Yes

	Population	-----Deviation-----	
		Total	Percent
Plan Overall Range		72,244	7.69%
Smallest District (18)	906,828	-33,350	-3.55%
Largest District (4)	979,072	38,894	4.14%
Average (mean)	952,398	34,453	3.67%

PLANS2118

District Population Analysis with County Subtotals

SENATE DISTRICTS - PLANS2118

	Deviation		Total	Anglo	Non-Anglo	Asian	Black	Hispanic	B+H	%Anglo	%Non-Anglo	%Asian	%Black	%Hispanic	%B+H
DISTRICT 4	38,894	Total:	979,072	539,594	439,478	39,815	108,505	271,183	373,698	55.1	44.9	4.1	11.1	27.7	38.2
	4.14 %	VAP:	721,676	425,114	296,562	27,983	74,980	176,573	248,780	58.9	41.1	3.9	10.4	24.5	34.5
Chambers (100%)			46,571	29,858	16,713	879	3,763	10,952	14,512	64.1	35.9	1.9	8.1	23.5	31.2
Galveston (1%)			2,770	2,289	481	38	37	321	349	82.6	17.4	1.4	1.3	11.6	12.6
Harris (5%)			244,966	116,125	128,841	8,872	41,840	74,298	113,904	47.4	52.6	3.6	17.1	30.3	46.5
Jefferson (25%)			64,322	19,919	44,403	2,325	20,091	21,523	41,175	31.0	69.0	3.6	31.2	33.5	64.0
Montgomery (100%)			620,443	371,403	249,040	27,701	42,774	164,089	203,758	59.9	40.1	4.5	6.9	26.4	32.8
DISTRICT 7	31,115	Total:	971,293	394,843	576,450	103,193	161,879	304,129	456,291	40.7	59.3	10.6	16.7	31.3	47.0
	3.31 %	VAP:	713,371	311,435	401,936	75,935	110,481	206,855	312,538	43.7	56.3	10.6	15.5	29.0	43.8
Harris (21%)			971,293	394,843	576,450	103,193	161,879	304,129	456,291	40.7	59.3	10.6	16.7	31.3	47.0
DISTRICT 18	-33,350	Total:	906,828	348,341	558,487	121,221	151,290	280,074	423,588	38.4	61.6	13.4	16.7	30.9	46.7
	-3.55 %	VAP:	677,878	283,405	394,473	88,661	106,167	191,774	294,450	41.8	58.2	13.1	15.7	28.3	43.4
Aransas (100%)			23,830	15,816	8,014	655	394	6,158	6,486	66.4	33.6	2.7	1.7	25.8	27.2
Austin (100%)			30,167	18,480	11,687	304	2,791	8,052	10,630	61.3	38.7	1.0	9.3	26.7	35.2
Burleson (100%)			17,642	11,258	6,384	118	2,145	3,712	5,737	63.8	36.2	0.7	12.2	21.0	32.5
Calhoun (100%)			20,106	8,374	11,732	1,169	534	9,858	10,271	41.6	58.4	5.8	2.7	49.0	51.1
De Witt (100%)			19,824	10,854	8,970	105	1,867	6,890	8,564	54.8	45.2	0.5	9.4	34.8	43.2
Fayette (100%)			24,435	17,041	7,394	129	1,722	5,216	6,785	69.7	30.3	0.5	7.0	21.3	27.8
Fort Bend (45%)			366,399	95,874	270,525	95,081	76,411	98,651	171,916	26.2	73.8	26.0	20.9	26.9	46.9
Goliad (100%)			7,012	4,246	2,766	60	349	2,288	2,569	60.6	39.4	0.9	5.0	32.6	36.6
Gonzales (100%)			19,653	8,159	11,494	122	1,391	9,897	11,074	41.5	58.5	0.6	7.1	50.4	56.3
Grimes (100%)			29,268	16,910	12,358	195	4,217	7,361	11,400	57.8	42.2	0.7	14.4	25.2	39.0
Harris (3%)			135,242	36,643	98,599	20,206	30,954	47,284	76,729	27.1	72.9	14.9	22.9	35.0	56.7
Lavaca (100%)			20,337	14,564	5,773	114	1,497	3,936	5,316	71.6	28.4	0.6	7.4	19.4	26.1
Lee (100%)			17,478	10,612	6,866	123	1,945	4,479	6,287	60.7	39.3	0.7	11.1	25.6	36.0
Refugio (100%)			6,741	2,864	3,877	61	534	3,306	3,735	42.5	57.5	0.9	7.9	49.0	55.4
Victoria (100%)			91,319	39,330	51,989	1,758	6,843	42,931	48,751	43.1	56.9	1.9	7.5	47.0	53.4
Waller (73%)			41,570	15,293	26,277	327	11,652	13,630	25,050	36.8	63.2	0.8	28.0	32.8	60.3
Washington (100%)			35,805	22,023	13,782	694	6,044	6,425	12,288	61.5	38.5	1.9	16.9	17.9	34.3

**Population and Voter Data
 with Voter Registration Comparison
 SENATE DISTRICTS - PLANS2118**

District	Deviation		Population							Total Voter Registration			Non-Suspense Voter Registration				
			Total	%Anglo	%Non-Anglo	%Asian	%Black	%Hispanic	%B+H	General Election	Turnout	Total	SSVR	TO/VR	Total	SSVR	TO/VR
4	38,894	Total:	979,072	55.1	44.9	4.1	11.1	27.7	38.2	2020	422,365	592,449	12.4 %	71.3 %	538,959	12.6 %	78.4 %
	4.14%	VAP:	721,676	58.9	41.1	3.9	10.4	24.5	34.5	2018	301,831	541,396	11.7 %	55.8 %	482,516	11.9 %	62.6 %
7	31,115	Total:	971,293	40.7	59.3	10.6	16.7	31.3	47.0	2020	408,207	567,369	17.0 %	71.9 %	525,771	17.2 %	77.6 %
	3.31%	VAP:	713,371	43.7	56.3	10.6	15.5	29.0	43.8	2018	295,349	521,671	16.1 %	56.6 %	474,540	16.4 %	62.2 %
18	-33,350	Total:	906,828	38.4	61.6	13.4	16.7	30.9	46.7	2020	373,460	536,569	19.4 %	69.6 %	495,105	19.3 %	75.4 %
	-3.55%	VAP:	677,878	41.8	58.2	13.1	15.7	28.3	43.4	2018	266,634	491,236	19.4 %	54.3 %	447,972	19.4 %	59.5 %

For technical reasons, election results in Texas Legislative Council reports may vary slightly from the official election results. Complete official results for all elections are maintained by the Office of the Texas Secretary of State.
 SSVR = Spanish surname voter registration

Plan Fit Verification
SENATE DISTRICTS
PLANS2118 Compared with PLANS2101

The amendment fits into the base plan.

American Community Survey Special Tabulation
 Using Census and American Community Survey Data
SENATE DISTRICTS - PLANS2118

Special Tabulation of Citizen Voting Age Population (CVAP) from the 2017-2021 American Community Survey with Margins of Error														
2020 Census			Hispanic CVAP	Not Hispanic or Latino Citizen Voting Age Population (CVAP)										
District	Total	VAP		CVAP	% Hispanic	% Black Alone	% Black + White	% Black + American Indian	% White Alone	% American Indian Alone	% Asian Alone	% Native Hawaiian Alone	% American Indian + White	% Asian + White
4	979,072	721,676	630,530 (±10,303)	18.1 (±0.7)	9.8 (±0.5)	0.5 (±0.1)	0.0(±0.1)	68.0 (±0.8)	0.2 (±0.1)	2.3 (±0.2)	0.1 (±0.1)	0.6 (±0.1)	0.3 (±0.1)	0.2 (±0.1)
7	971,293	713,371	600,430 (±11,069)	23.8 (±0.9)	15.5 (±0.9)	0.5 (±0.1)	0.0(±0.1)	51.2 (±0.7)	0.1 (±0.1)	7.7 (±0.5)	0.0 (±0.1)	0.4 (±0.1)	0.6 (±0.1)	0.3 (±0.1)
18	906,828	677,878	587,845 (±9,976)	26.6 (±0.9)	15.2 (±0.8)	0.4 (±0.1)	0.1(±0.1)	46.6 (±0.6)	0.2 (±0.1)	10.1 (±0.7)	0.0 (±0.1)	0.4 (±0.1)	0.3 (±0.1)	0.1 (±0.1)

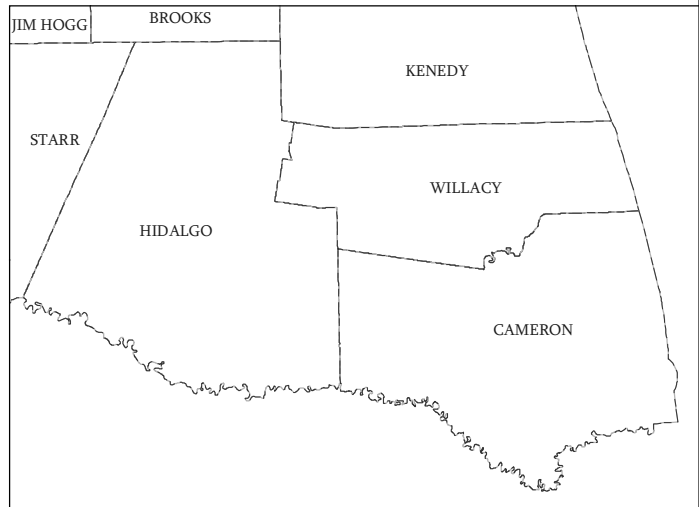
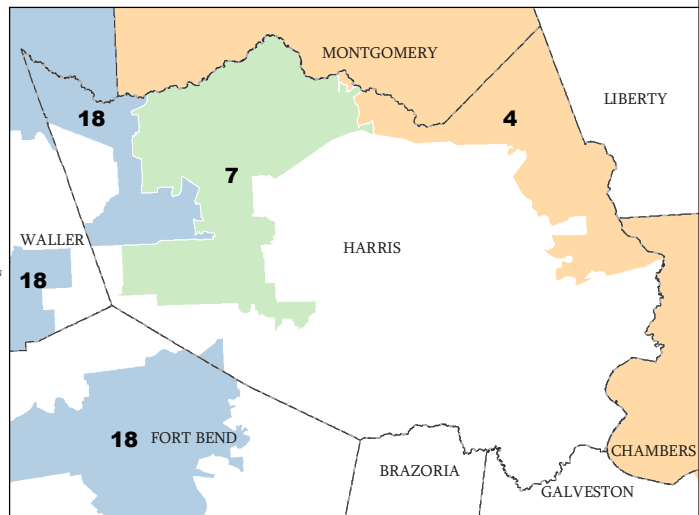
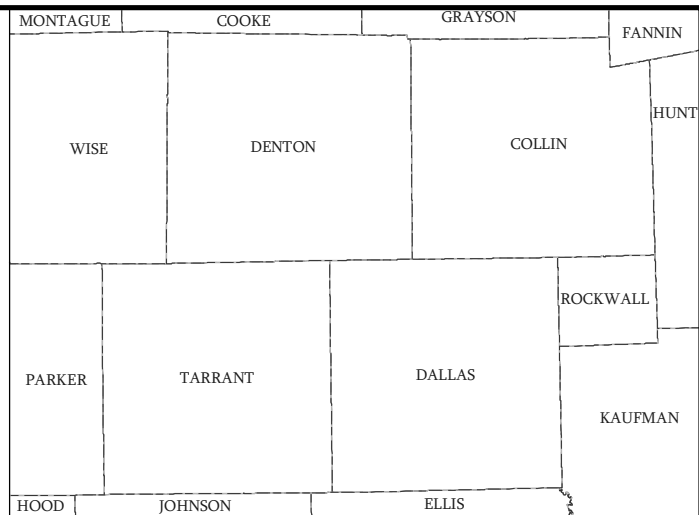
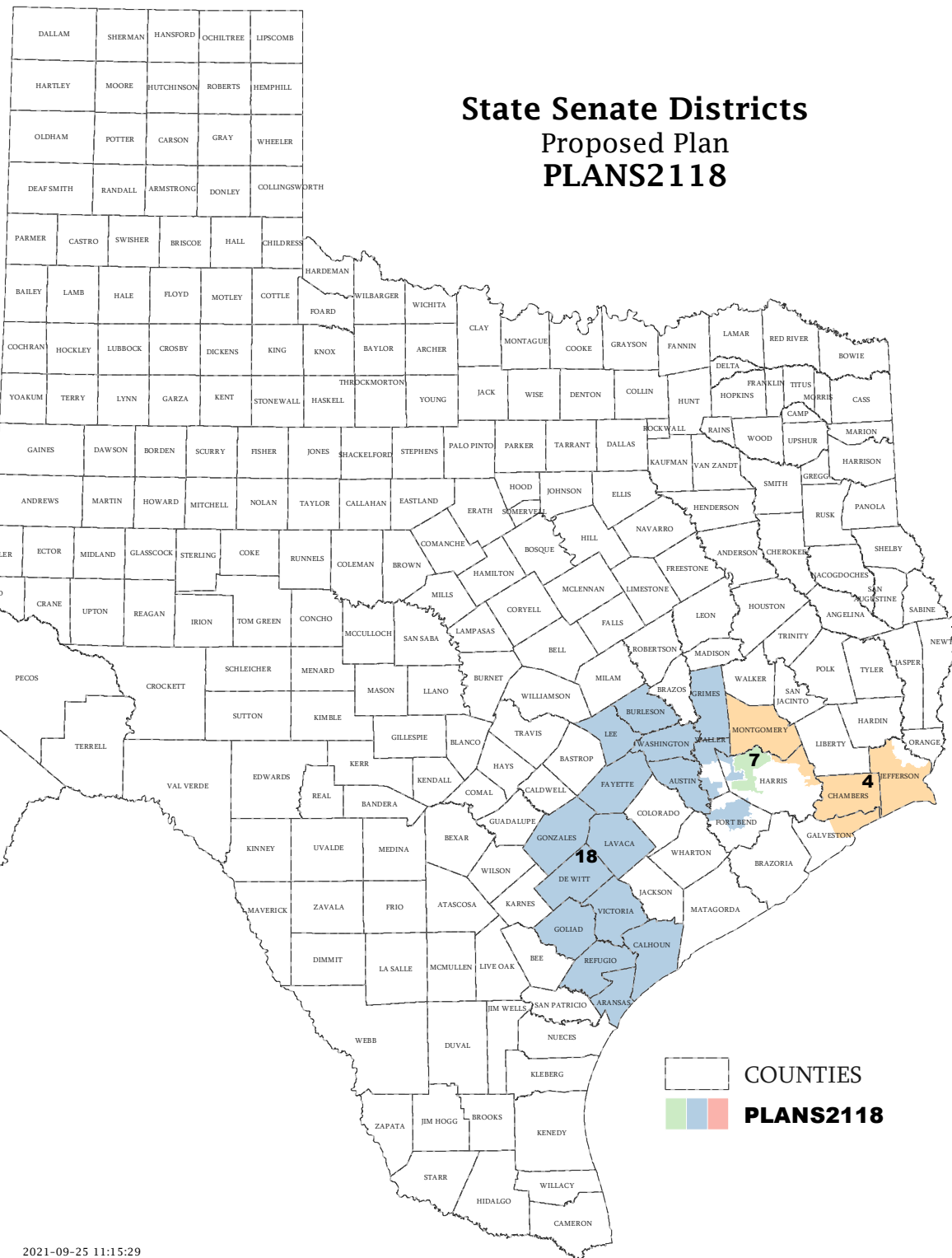
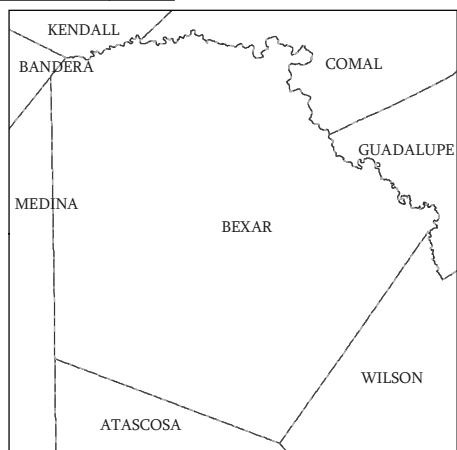
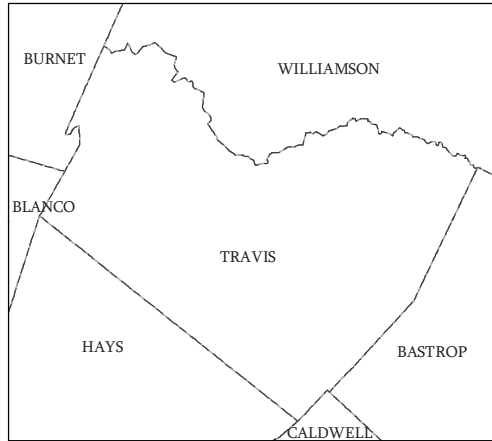
The American Community Survey provided estimated citizen voting age population (CVAP) data at the block group level in a Special Tabulation. Because the MOE can only be calculated using whole block groups, all block groups with more than 50% of the population in a district are included in the analysis. The Red-118 report provides a summary of the block groups used in the analysis.
 The percent for each CVAP population category is that group's CVAP divided by the CVAP total.
 Numbers in parentheses are margins of error at 90% confidence level.

Incumbents by District

SENATE DISTRICTS - PLANS2118

District	Incumbents
4	Creighton - R
7	Bettencourt - R
18	Kolkhorst - R

State Senate Districts Proposed Plan PLANS2118

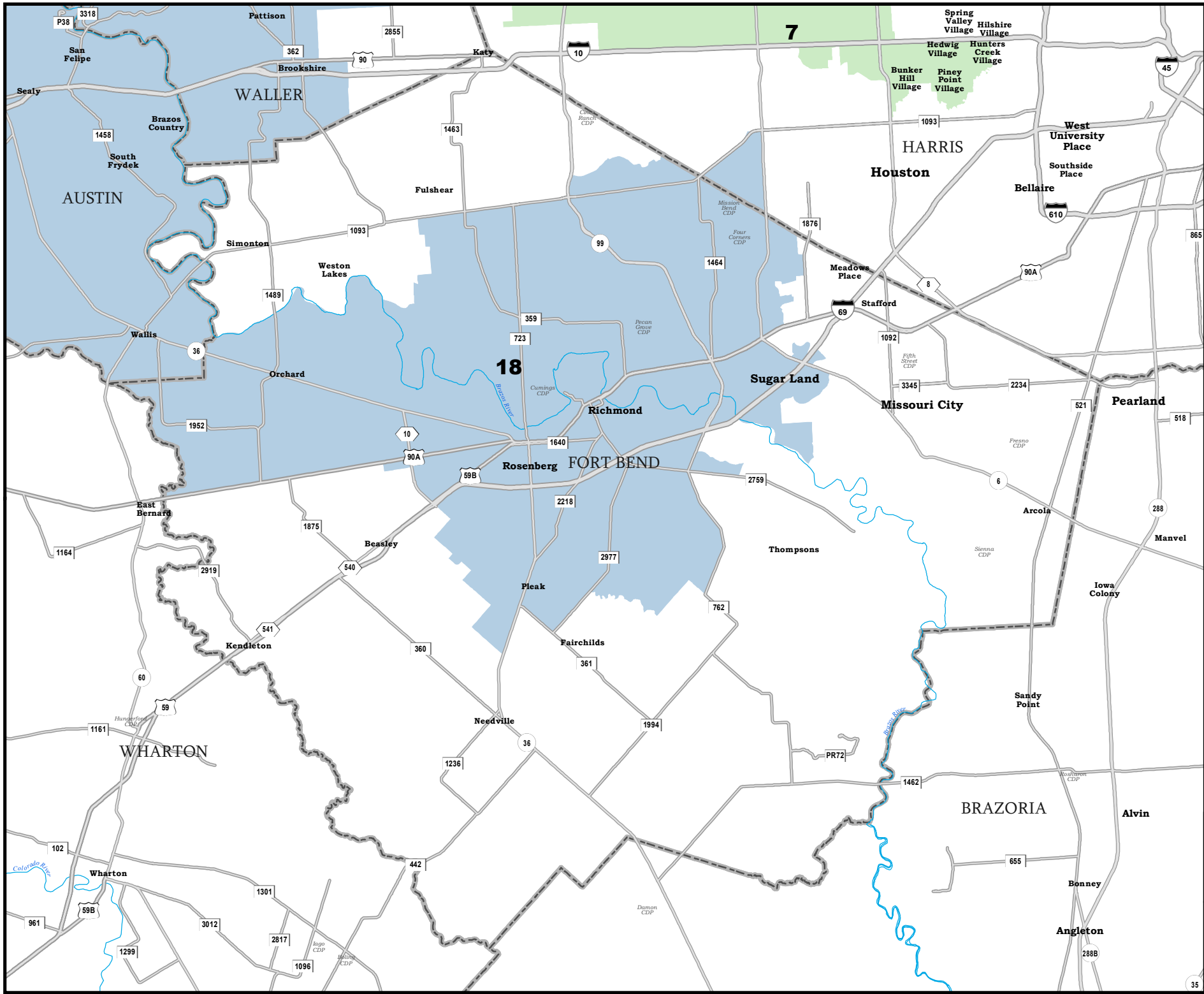


COUNTIES
PLANS2118

Map ID 5900
09/25/21 12:29:48



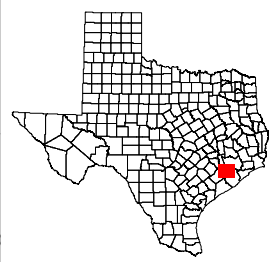
48198
2020 Census
PLANS2118 2021-09-25 11:15:29



FORT BEND COUNTY

State Senate Districts Proposed Plan PLANS2118

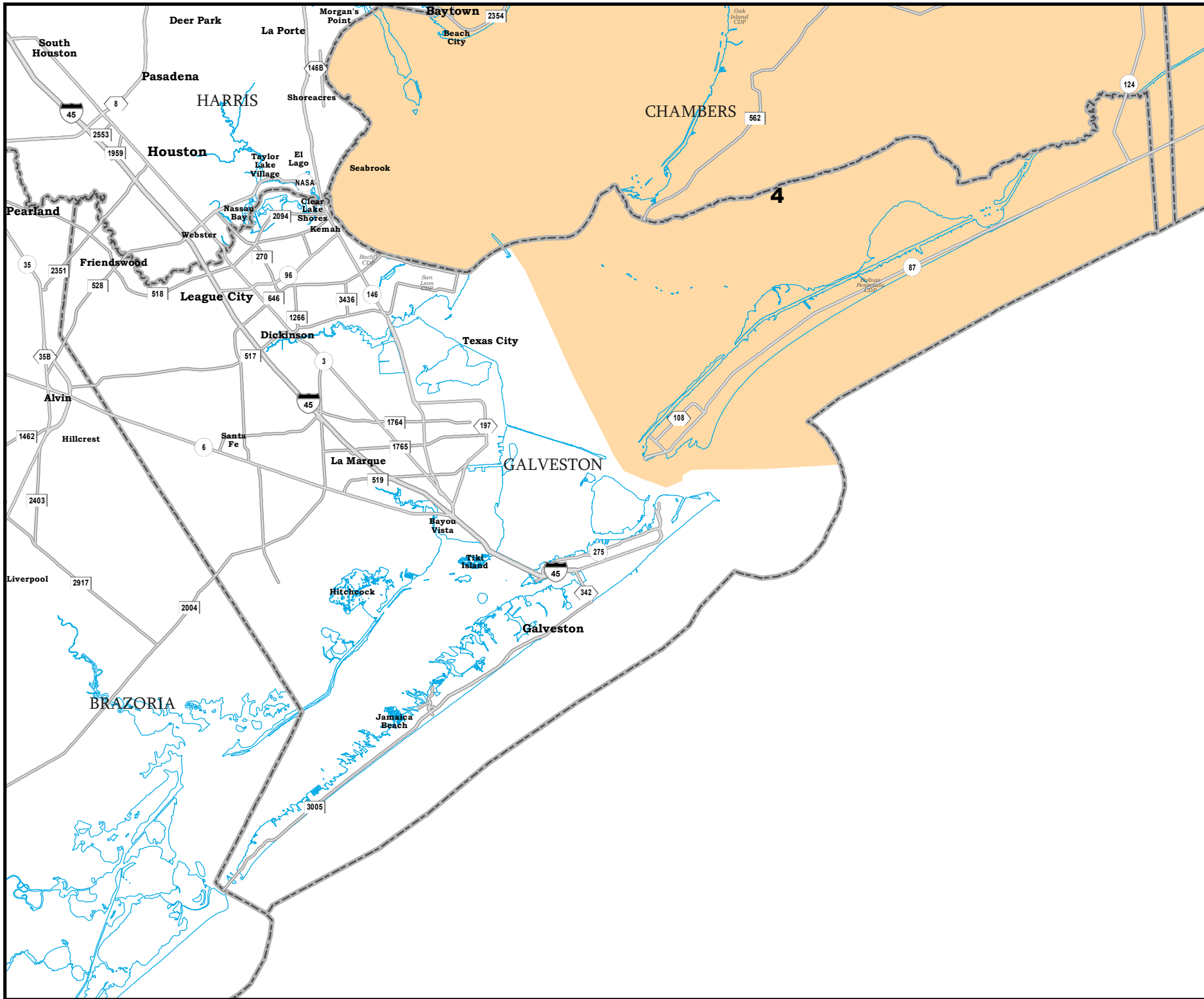
 COUNTIES
 **PLANS2118**



48198
2020 Census
PLANS2118 2021-09-25 11:15:29

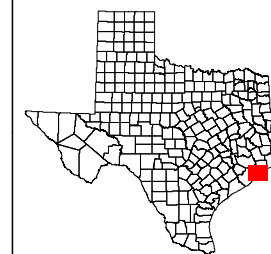
Map ID 5900
09/25/21 12:29:48





GALVESTON COUNTY

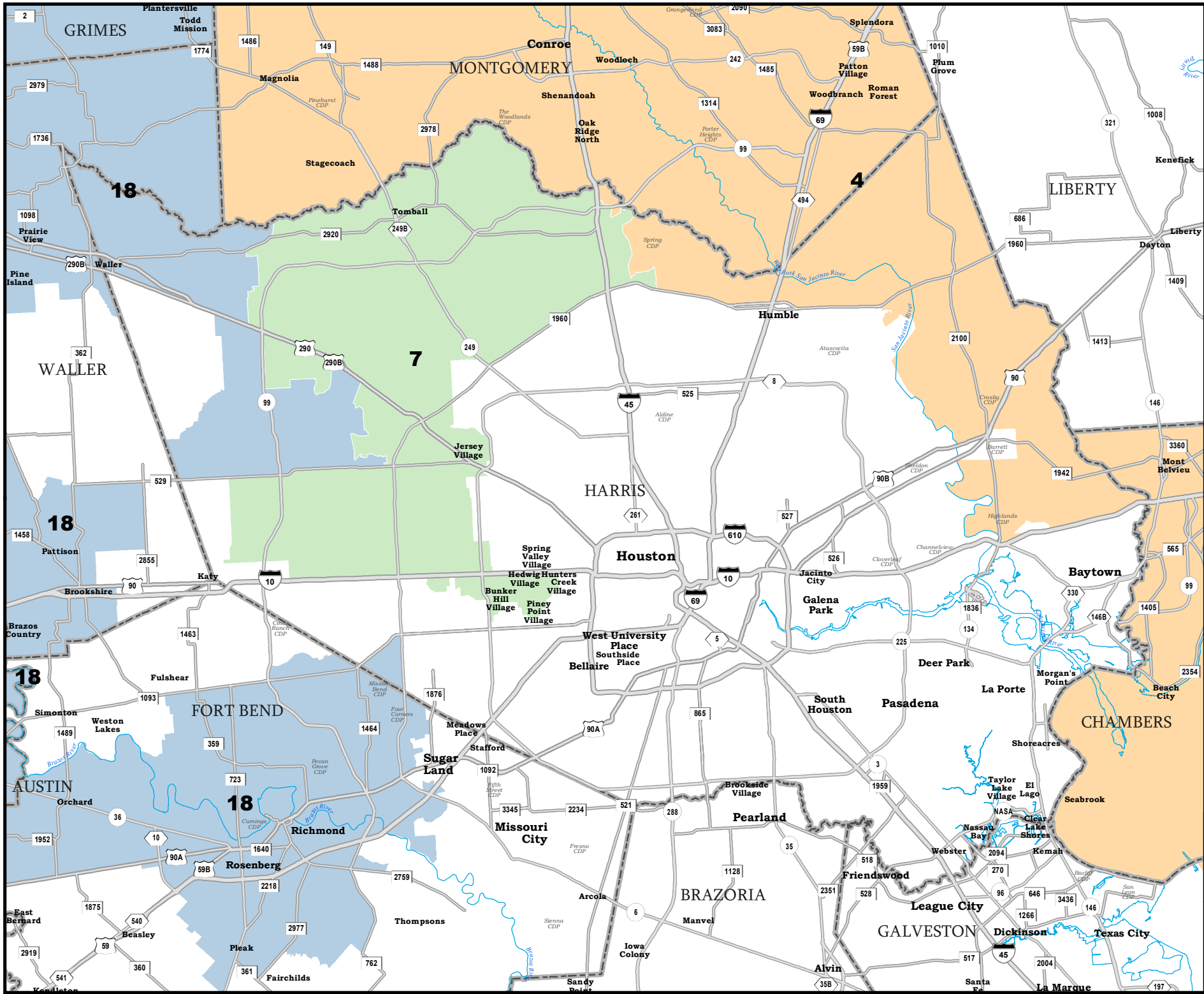
State Senate Districts Proposed Plan PLANS2118



48198
2020 Census
PLANS2118 2021-09-25 11:15:29

Map ID 5900
09/25/21 12:29:48

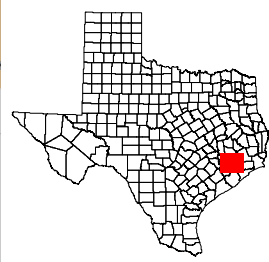




HARRIS COUNTY

State Senate Districts Proposed Plan PLANS2118

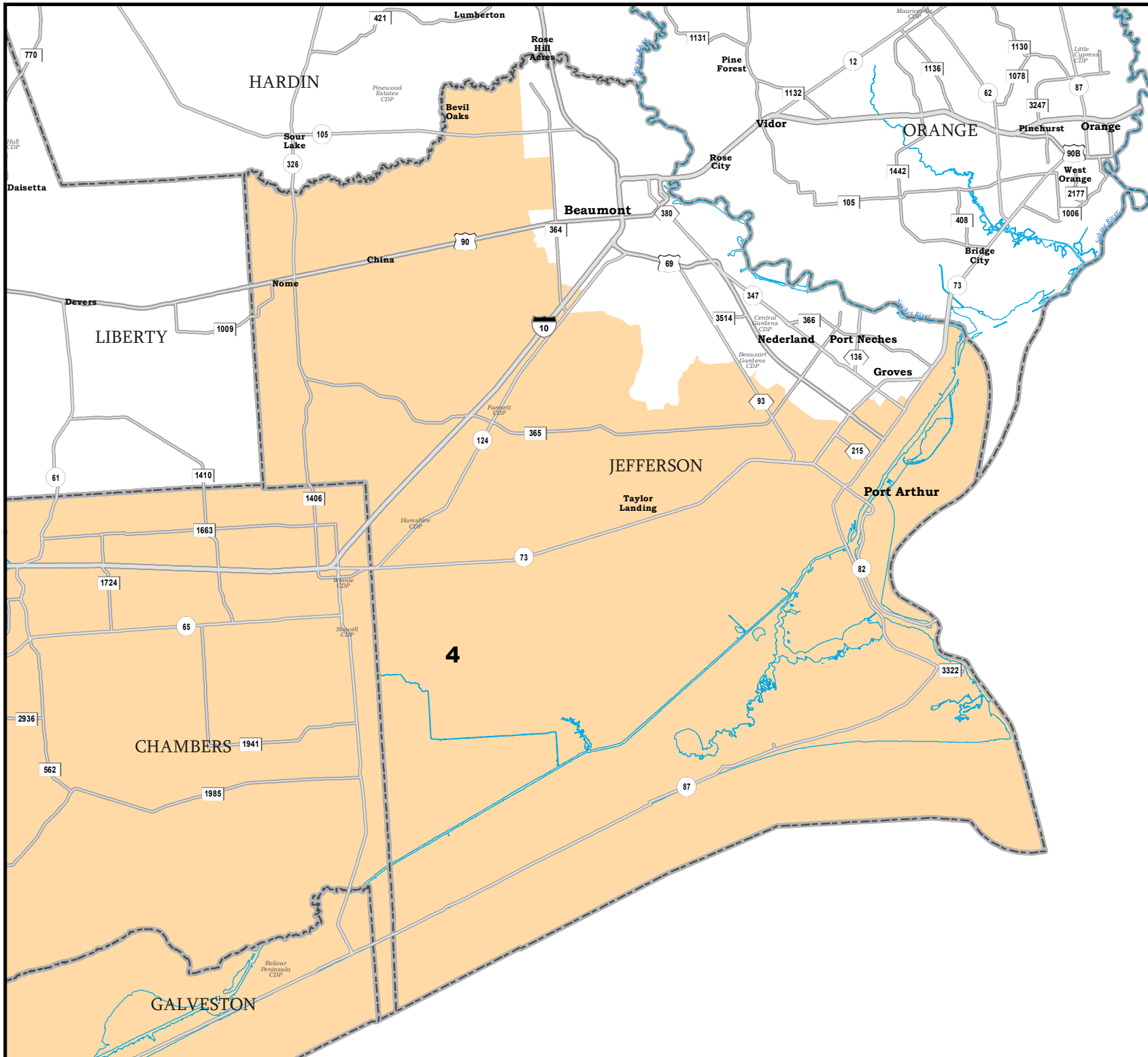
 COUNTIES
 **PLANS2118**



Map ID 5900
09/25/21 12:29:48

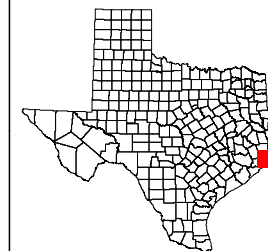


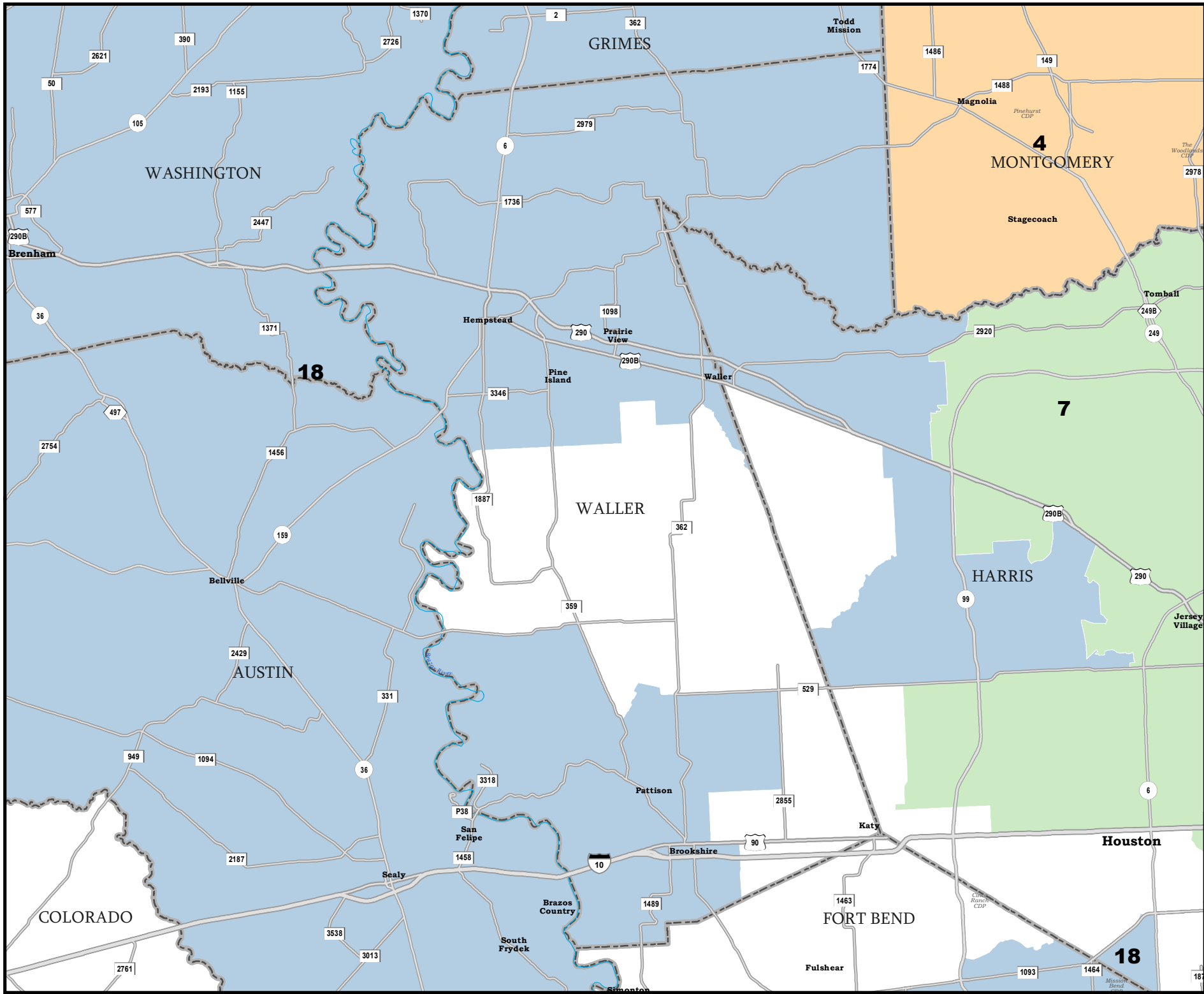
48198
2020 Census
PLANS2118 2021-09-25 11:15:29



JEFFERSON COUNTY

State Senate Districts Proposed Plan PLANS2118





WALLER COUNTY

State Senate Districts Proposed Plan PLANS2118

 COUNTIES
 **PLANS2118**

