

District Population Analysis with County Subtotals
HOUSE DISTRICTS - PLANH2169

Total State Population	29,145,505
Total Districts Required	150
Ideal District Population	194,303
Unassigned Population	28,536,205
Districts in Plan	3
Unassigned Geography	Yes
Districts Contiguous	Yes

	Population	-----Deviation-----	
		Total	Percent
Plan Overall Range		984	0.51%
Smallest District (49)	202,659	8,356	4.30%
Largest District (47)	203,643	9,340	4.81%
Average (mean)	203,100	8,797	4.53%

PLANH2169

District Population Analysis with County Subtotals

HOUSE DISTRICTS - PLANH2169

	Deviation		Total	Anglo	Non-Anglo	Asian	Black	Hispanic	B+H	%Anglo	%Non-Anglo	%Asian	%Black	%Hispanic	%B+H
DISTRICT 47	9,340	Total:	203,643	126,470	77,173	32,793	8,198	32,373	39,677	62.1	37.9	16.1	4.0	15.9	19.5
	4.81 %	VAP:	153,837	99,515	54,322	22,625	5,934	22,614	28,074	64.7	35.3	14.7	3.9	14.7	18.2
Travis (16%)			203,643	126,470	77,173	32,793	8,198	32,373	39,677	62.1	37.9	16.1	4.0	15.9	19.5
DISTRICT 48	8,695	Total:	202,998	121,739	81,259	17,150	10,394	50,615	59,674	60.0	40.0	8.4	5.1	24.9	29.4
	4.47 %	VAP:	161,834	100,509	61,325	12,848	7,912	37,660	44,793	62.1	37.9	7.9	4.9	23.3	27.7
Travis (16%)			202,998	121,739	81,259	17,150	10,394	50,615	59,674	60.0	40.0	8.4	5.1	24.9	29.4
DISTRICT 49	8,356	Total:	202,659	118,440	84,219	20,296	10,316	50,616	59,742	58.4	41.6	10.0	5.1	25.0	29.5
	4.30 %	VAP:	174,911	106,164	68,747	17,932	8,493	39,389	47,097	60.7	39.3	10.3	4.9	22.5	26.9
Travis (16%)			202,659	118,440	84,219	20,296	10,316	50,616	59,742	58.4	41.6	10.0	5.1	25.0	29.5

**Population and Voter Data
 with Voter Registration Comparison
 HOUSE DISTRICTS - PLANH2169**

District	Deviation		Population								Total Voter Registration			Non-Suspense Voter Registration			
			Total	%Anglo	%Non-Anglo	%Asian	%Black	%Hispanic	%B+H	General Election	Turnout	Total	SSVR	TO/VR	Total	SSVR	TO/VR
47	9,340	Total:	203,643	62.1	37.9	16.1	4.0	15.9	19.5	2020	111,686	144,364	8.6 %	77.4 %	132,968	8.6 %	84.0 %
	4.81%	VAP:	153,837	64.7	35.3	14.7	3.9	14.7	18.2	2018	88,299	133,196	8.3 %	66.3 %	118,239	8.3 %	74.7 %
48	8,695	Total:	202,998	60.0	40.0	8.4	5.1	24.9	29.4	2020	115,145	150,244	14.6 %	76.6 %	137,922	14.7 %	83.5 %
	4.47%	VAP:	161,834	62.1	37.9	7.9	4.9	23.3	27.7	2018	94,749	140,319	14.4 %	67.5 %	124,008	14.4 %	76.4 %
49	8,356	Total:	202,659	58.4	41.6	10.0	5.1	25.0	29.5	2020	109,867	158,661	11.6 %	69.2 %	140,341	11.7 %	78.3 %
	4.30%	VAP:	174,911	60.7	39.3	10.3	4.9	22.5	26.9	2018	98,606	153,695	11.7 %	64.2 %	127,771	11.8 %	77.2 %

For technical reasons, election results in Texas Legislative Council reports may vary slightly from the official election results. Complete official results for all elections are maintained by the Office of the Texas Secretary of State.
 SSVR = Spanish surname voter registration

Plan Fit Verification
HOUSE DISTRICTS
PLANH2169 Compared with PLANH2101

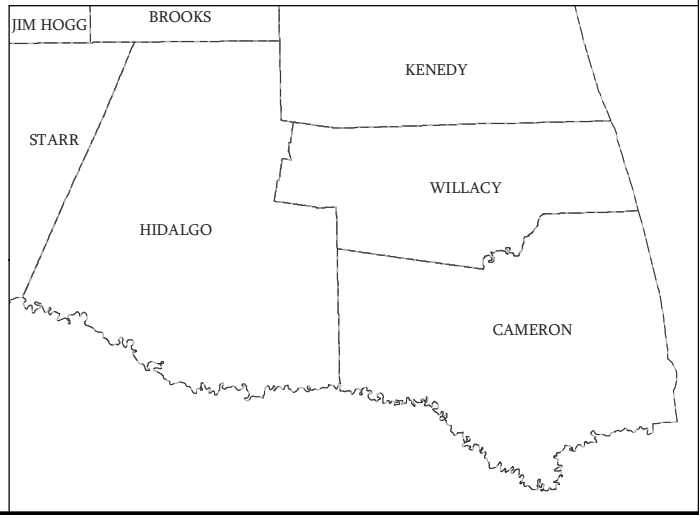
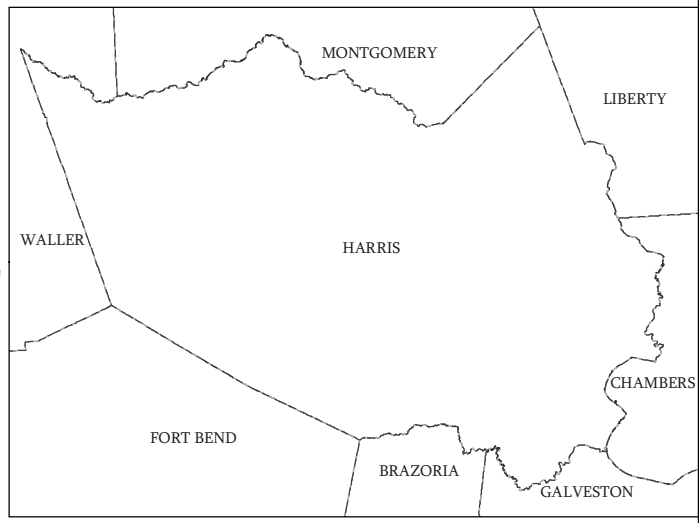
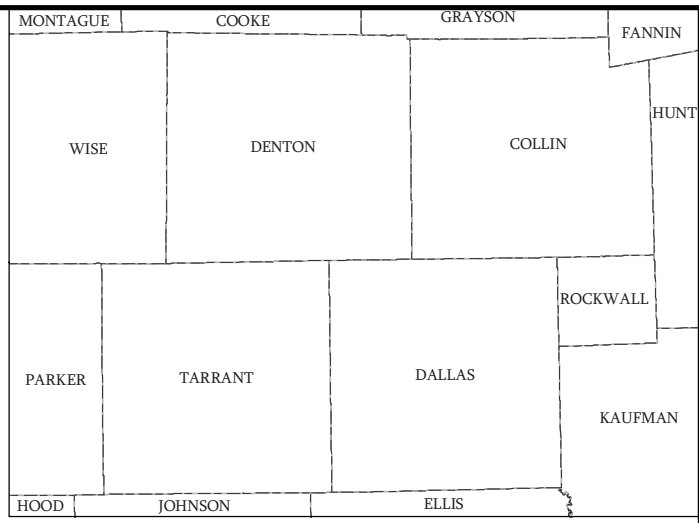
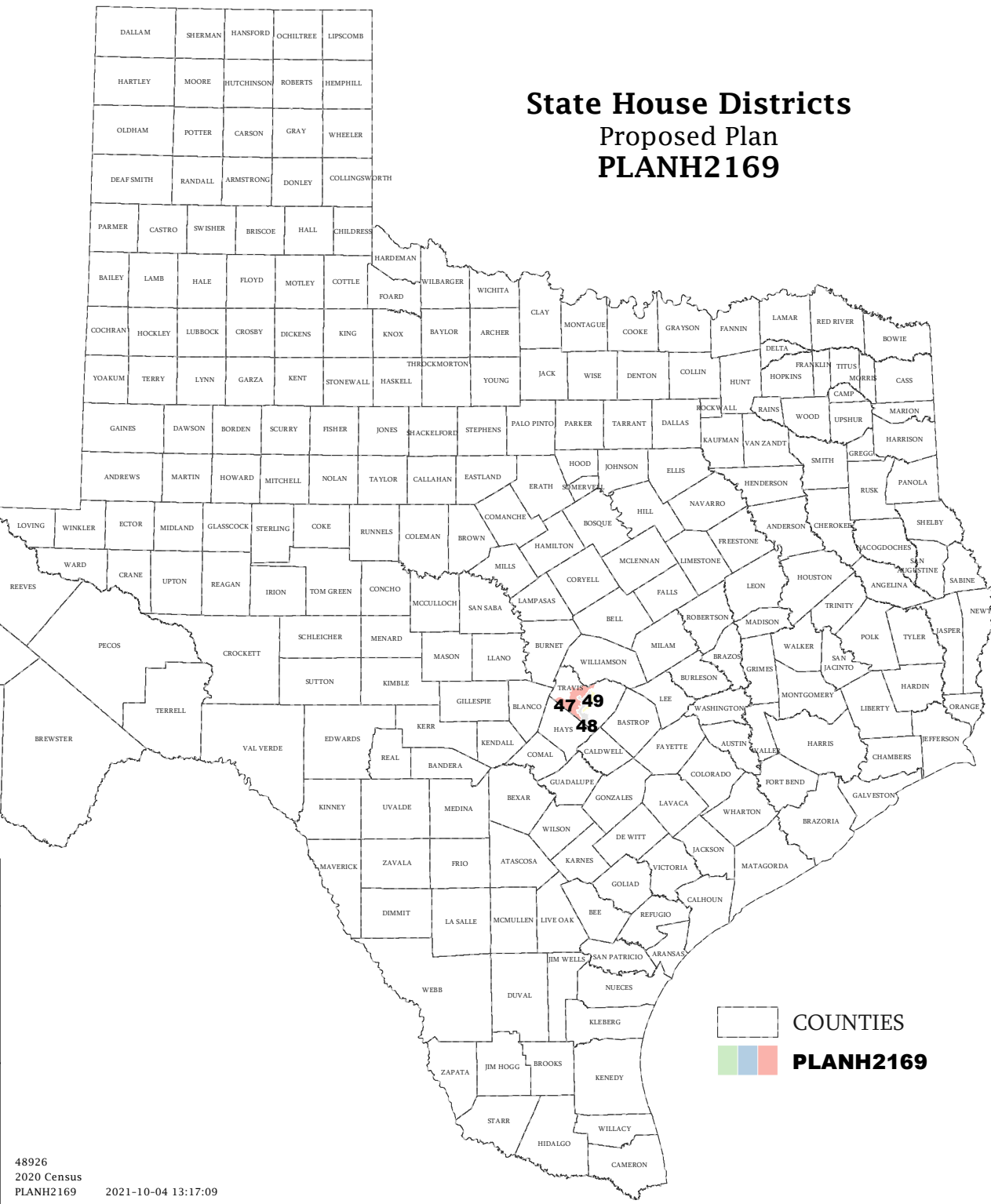
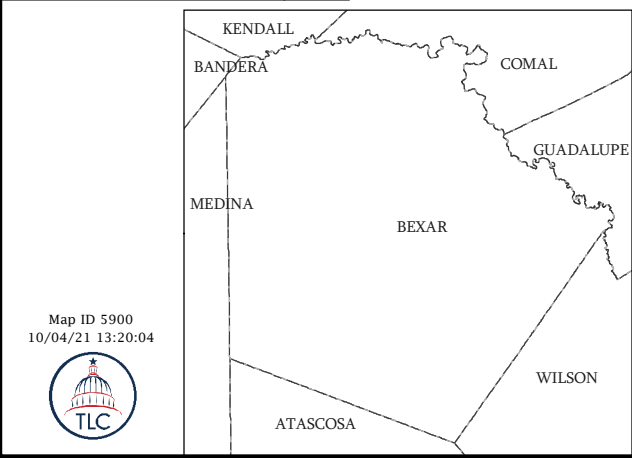
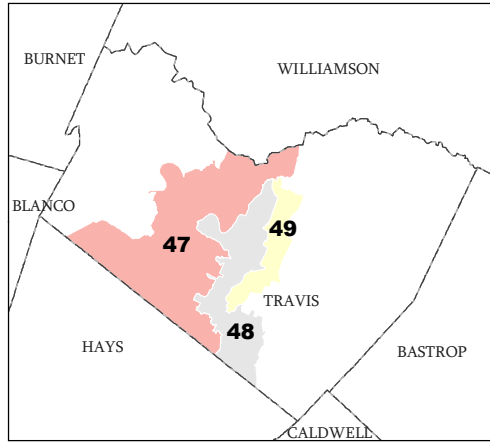
The amendment fits into the base plan.

Incumbents by District

HOUSE DISTRICTS - PLANH2169

District	Incumbents
47	Goodwin - D
48	Howard - D
49	Hinojosa - D

State House Districts Proposed Plan PLANH2169

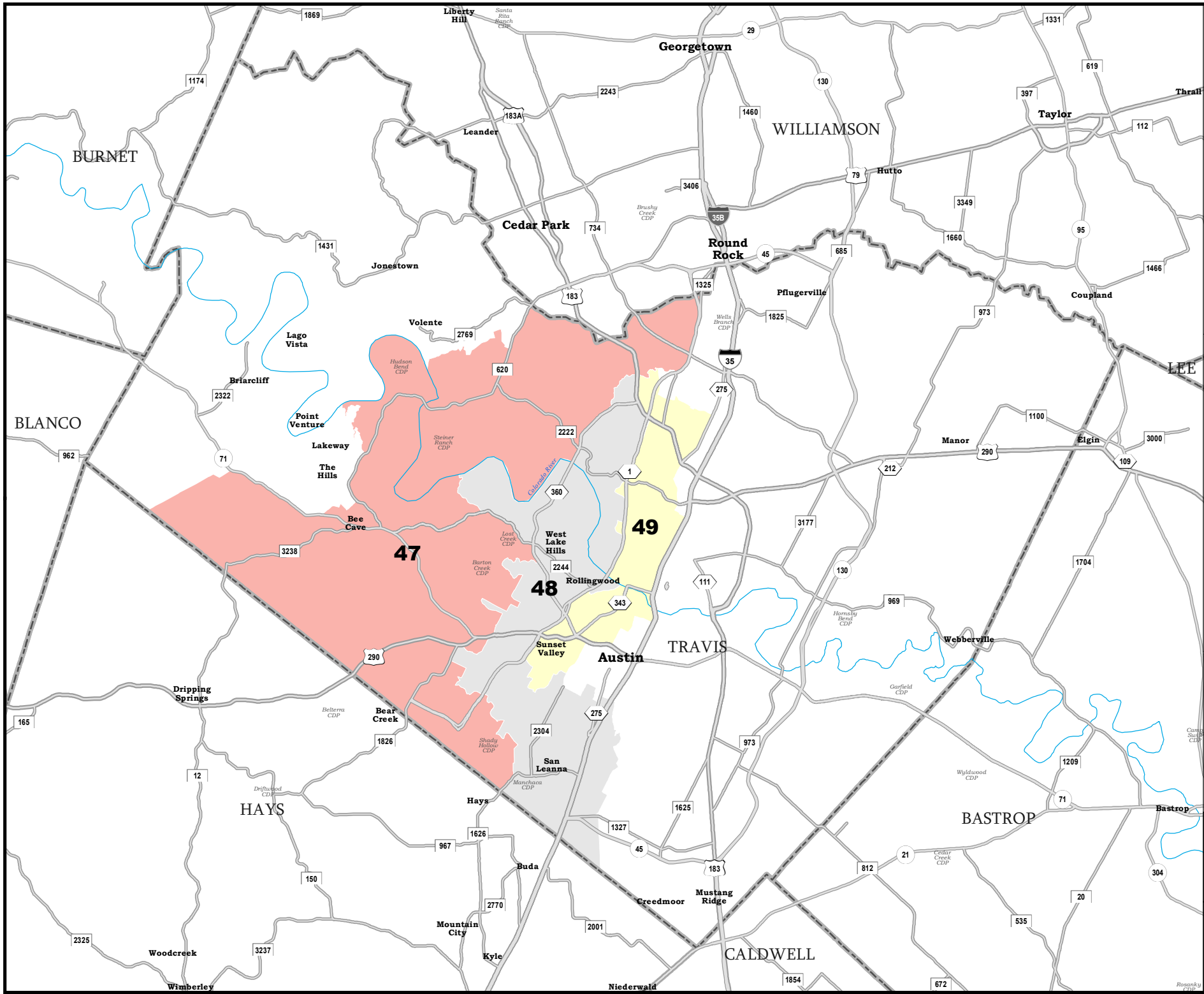


COUNTIES
PLANH2169

Map ID 5900
10/04/21 13:20:04



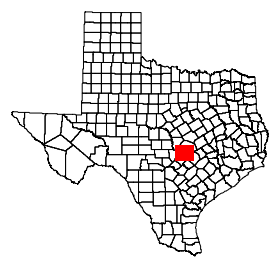
48926
2020 Census
PLANH2169 2021-10-04 13:17:09



TRAVIS COUNTY

State House Districts Proposed Plan PLANH2169

 COUNTIES
 **PLANH2169**



Map ID 5900
10/04/21 13:20:04



48926
2020 Census
PLANH2169 2021-10-04 13:17:09