

District Population Analysis with County Subtotals  
**HOUSE DISTRICTS - PLANH2215**

Total State Population	29,145,505
Total Districts Required	150
Ideal District Population	194,303
Unassigned Population	28,754,016
Districts in Plan	2
Unassigned Geography	Yes
Districts Contiguous	Yes

	<b>Population</b>	<b>-----Deviation-----</b>	
		<b>Total</b>	<b>Percent</b>
Plan Overall Range		1,931	1.00%
Smallest District (149)	194,779	476	0.24%
Largest District (132)	196,710	2,407	1.24%
Average (mean)	195,745	1,442	0.74%

PLANH2215

## District Population Analysis with County Subtotals

### HOUSE DISTRICTS - PLANH2215

	Deviation		Total	Anglo	Non-Anglo	Asian	Black	Hispanic	B+H	%Anglo	%Non-Anglo	%Asian	%Black	%Hispanic	%B+H
<b>DISTRICT 132</b>	2,407	Total:	196,710	84,777	111,933	26,233	27,784	56,092	82,007	43.1	56.9	13.3	14.1	28.5	41.7
	1.24 %	VAP:	142,413	65,452	76,961	18,125	18,752	38,150	55,922	46.0	54.0	12.7	13.2	26.8	39.3
Harris (4%)			196,710	84,777	111,933	26,233	27,784	56,092	82,007	43.1	56.9	13.3	14.1	28.5	41.7
<b>DISTRICT 149</b>	476	Total:	194,779	25,953	168,826	38,043	52,584	78,743	128,849	13.3	86.7	19.5	27.0	40.4	66.2
	0.24 %	VAP:	146,336	21,771	124,565	31,076	36,866	56,483	91,871	14.9	85.1	21.2	25.2	38.6	62.8
Harris (4%)			194,779	25,953	168,826	38,043	52,584	78,743	128,849	13.3	86.7	19.5	27.0	40.4	66.2

**Population and Voter Data  
 with Voter Registration Comparison  
 HOUSE DISTRICTS - PLANH2215**

District	Deviation		Population								Total Voter Registration			Non-Suspense Voter Registration			
			Total	%Anglo	%Non-Anglo	%Asian	%Black	%Hispanic	%B+H	General Election	Turnout	Total	SSVR	TO/VR	Total	SSVR	TO/VR
132	2,407 1.24%	Total:	196,710	43.1	56.9	13.3	14.1	28.5	41.7	2020	83,606	111,915	15.6 %	74.7 %	104,231	15.7 %	80.2 %
		VAP:	142,413	46.0	54.0	12.7	13.2	26.8	39.3	2018	56,114	96,718	14.8 %	58.0 %	88,276	15.1 %	63.6 %
149	476 0.24%	Total:	194,779	13.3	86.7	19.5	27.0	40.4	66.2	2020	57,322	93,073	23.7 %	61.6 %	85,864	24.2 %	66.8 %
		VAP:	146,336	14.9	85.1	21.2	25.2	38.6	62.8	2018	39,061	88,071	23.1 %	44.4 %	79,300	24.0 %	49.3 %

**Plan Fit Verification**  
**HOUSE DISTRICTS**  
**PLANH2215 Compared with PLANH2187**

**The amendment fits into the base plan.**

# Incumbents by District

## HOUSE DISTRICTS - PLANH2215

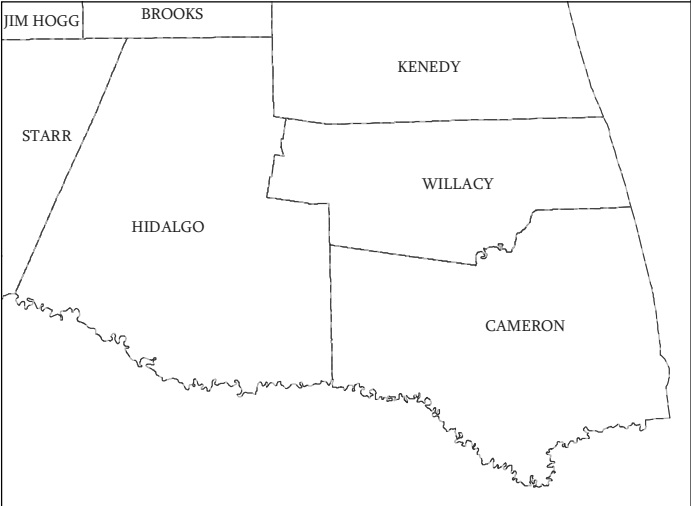
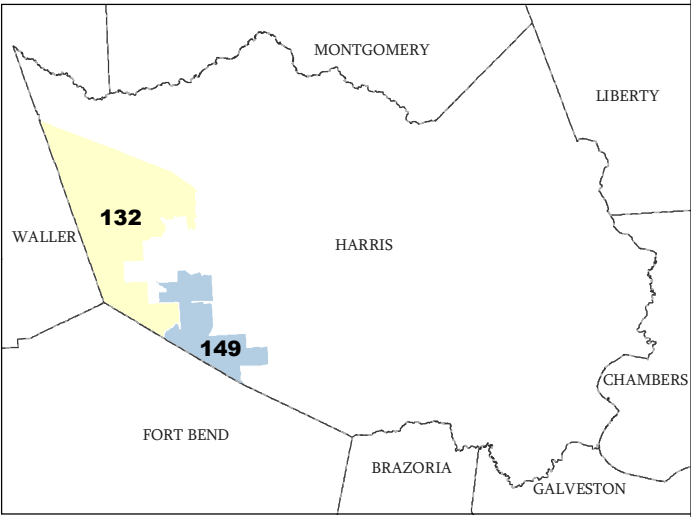
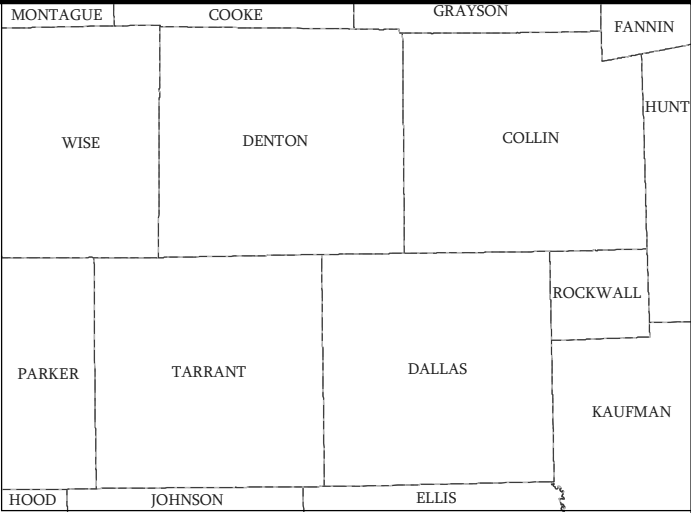
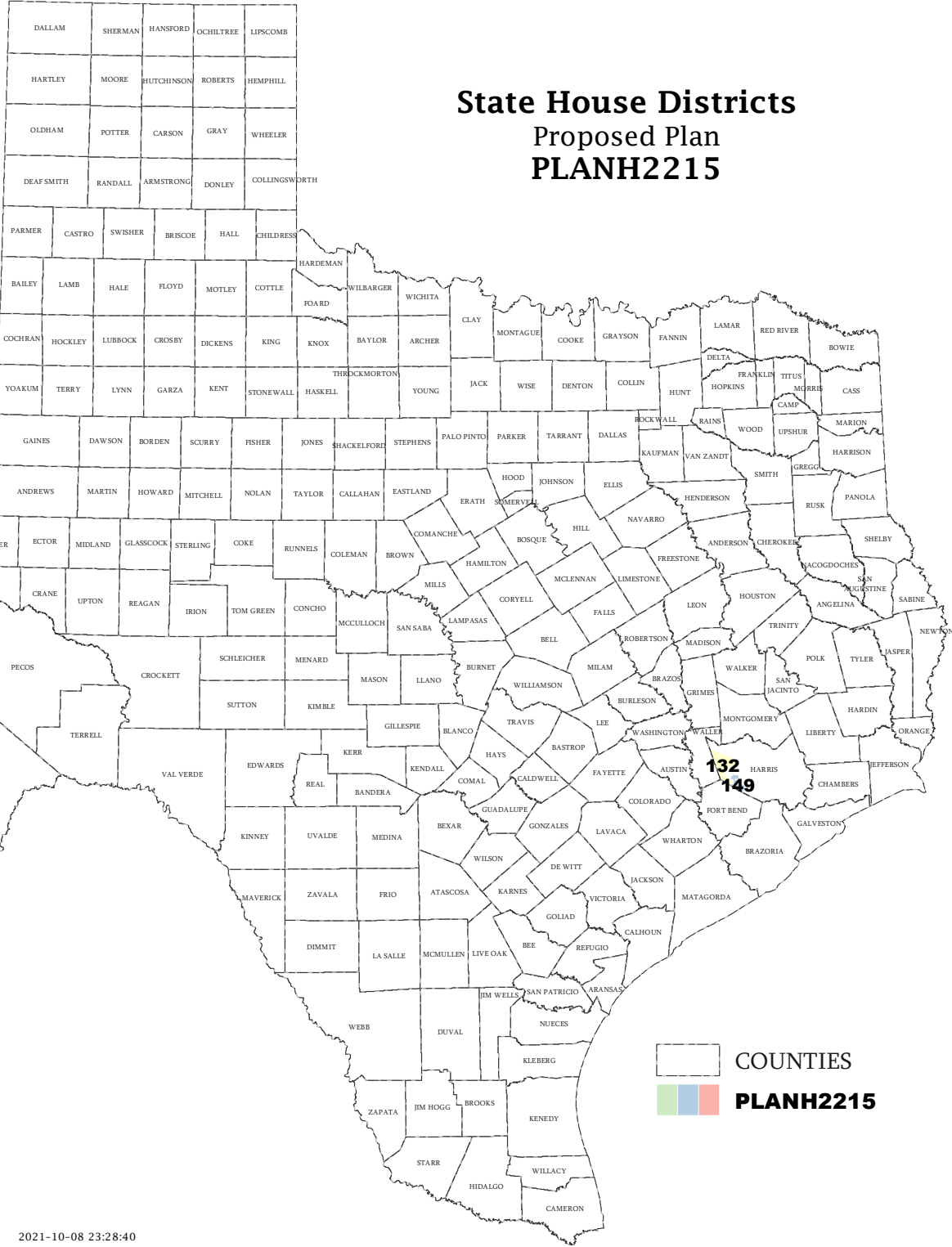
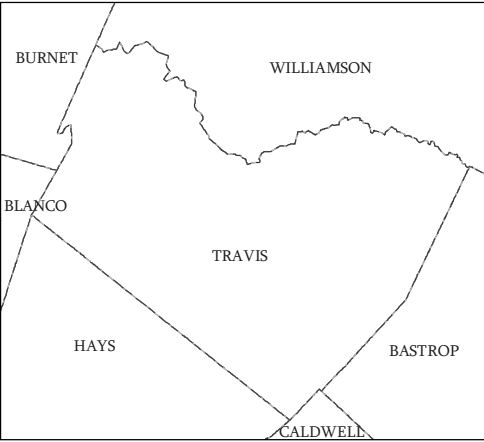
District	Incumbents
132	Schofield - R
149	Vo - D

American Community Survey Special Tabulation  
 Using Census and American Community Survey Data  
**HOUSE DISTRICTS - PLANH2215**

2020 Census			Special Tabulation of Citizen Voting Age Population (CVAP) from the 2015-2019 American Community Survey with Margins of Error												
			CVAP	Hispanic CVAP % Hispanic	Not Hispanic or Latino Citizen Voting Age Population (CVAP)										
District	Total	VAP			% Black Alone	% Black + White	% Black + American Indian	% White Alone	% American Indian Alone	% Asian Alone	% Native Hawaiian Alone	% American Indian + White	% Asian + White	% Remainder 2 or More Other	
132	196,710	142,413	112,705 (±3,235)	22.0 (±1.7)	10.7 (±1.4)	0.3 (±0.2)	0.0(±0.1)	56.8 (±1.2)	0.5 (±0.3)	8.5 (±0.9)	0.0 (±0.1)	0.4 (±0.2)	0.5 (±0.2)	0.4 (±0.3)	
149	194,779	146,336	111,095 (±3,585)	30.5 (±2.0)	24.8 (±1.8)	0.4 (±0.2)	0.1(±0.2)	21.5 (±1.3)	0.3 (±0.2)	21.4 (±1.3)	0.0 (±0.1)	0.2 (±0.2)	0.5 (±0.3)	0.2 (±0.2)	

The American Community Survey provided estimated citizen voting age population (CVAP) data at the block group level in a Special Tabulation. Because the MOE can only be calculated using whole block groups, all block groups with more than 50% of the population in a district are included in the analysis. The Red-118 report provides a summary of the block groups used in the analysis.  
 The percent for each CVAP population category is that group's CVAP divided by the CVAP total.  
 Numbers in parentheses are margins of error at 90% confidence level.

# State House Districts Proposed Plan PLANH2215

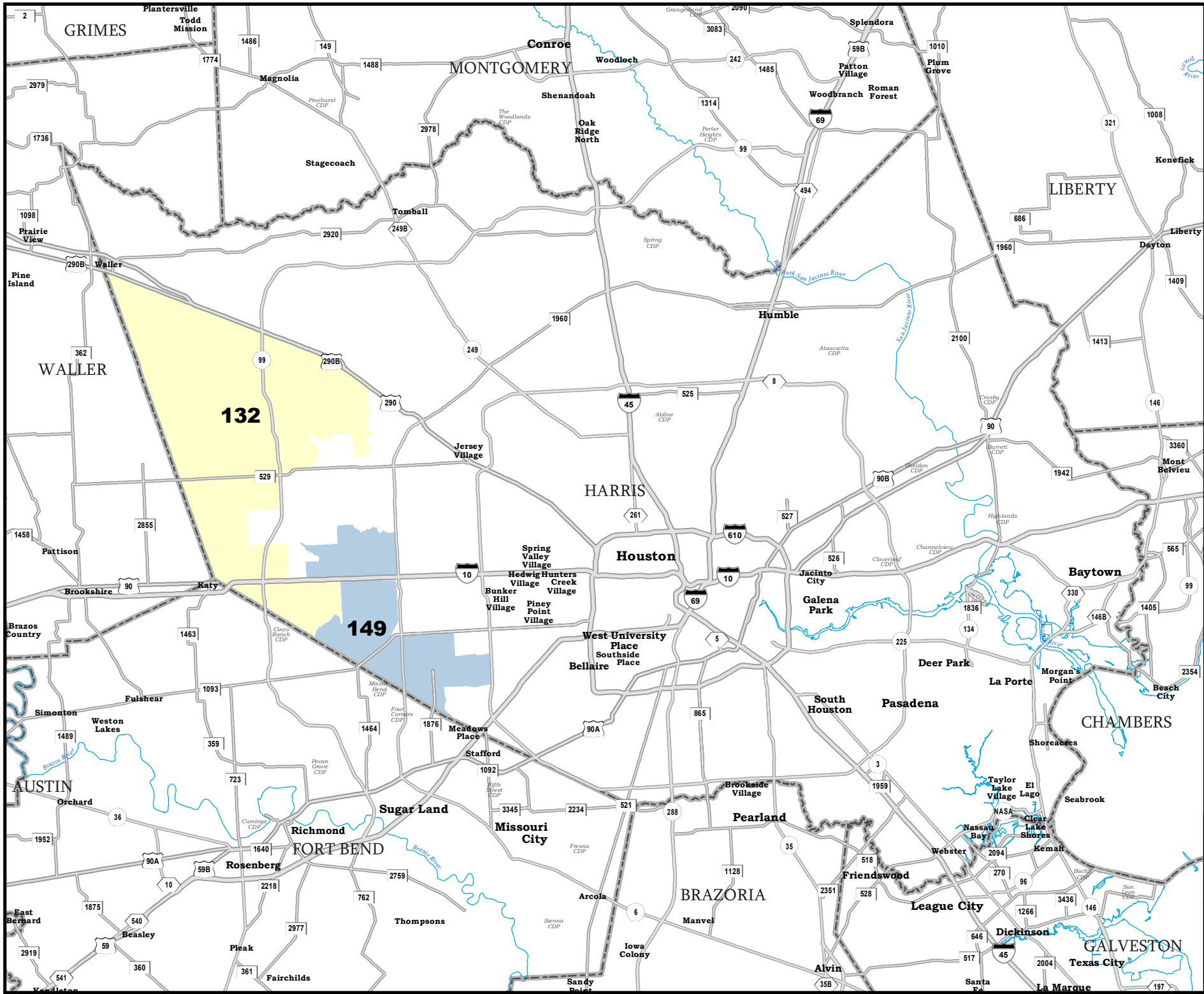


COUNTIES  
**PLANH2215**

Map ID 5900  
10/08/21 23:44:21



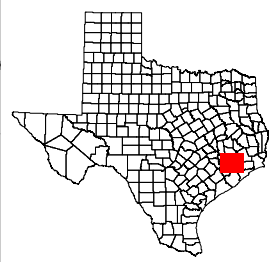
49336  
2020 Census  
PLANH2215 2021-10-08 23:28:40



# HARRIS COUNTY

## State House Districts Proposed Plan PLANH2215

 COUNTIES  
 PLANH2215



Map ID 5900  
10/08/21 23:44:21



49336  
2020 Census  
PLANH2215 2021-10-08 23:28:40