

District Population Analysis with County Subtotals
HOUSE DISTRICTS - PLANH2215

Total State Population	29,145,505
Total Districts Required	150
Ideal District Population	194,303
Unassigned Population	28,754,016
Districts in Plan	2
Unassigned Geography	Yes
Districts Contiguous	Yes

	Population	-----Deviation-----	
		Total	Percent
Plan Overall Range		1,931	1.00%
Smallest District (149)	194,779	476	0.24%
Largest District (132)	196,710	2,407	1.24%
Average (mean)	195,745	1,442	0.74%

PLANH2215

District Population Analysis with County Subtotals

HOUSE DISTRICTS - PLANH2215

	Deviation		Total	Anglo	Non-Anglo	Asian	Black	Hispanic	B+H	%Anglo	%Non-Anglo	%Asian	%Black	%Hispanic	%B+H
DISTRICT 132	2,407	Total:	196,710	84,777	111,933	26,233	27,784	56,092	82,007	43.1	56.9	13.3	14.1	28.5	41.7
	1.24 %	VAP:	142,413	65,452	76,961	18,125	18,752	38,150	55,922	46.0	54.0	12.7	13.2	26.8	39.3
Harris (4%)			196,710	84,777	111,933	26,233	27,784	56,092	82,007	43.1	56.9	13.3	14.1	28.5	41.7
DISTRICT 149	476	Total:	194,779	25,953	168,826	38,043	52,584	78,743	128,849	13.3	86.7	19.5	27.0	40.4	66.2
	0.24 %	VAP:	146,336	21,771	124,565	31,076	36,866	56,483	91,871	14.9	85.1	21.2	25.2	38.6	62.8
Harris (4%)			194,779	25,953	168,826	38,043	52,584	78,743	128,849	13.3	86.7	19.5	27.0	40.4	66.2

**Population and Voter Data
 with Voter Registration Comparison
 HOUSE DISTRICTS - PLANH2215**

District	Deviation		Population								Total Voter Registration			Non-Suspense Voter Registration			
			Total	%Anglo	%Non-Anglo	%Asian	%Black	%Hispanic	%B+H	General Election	Turnout	Total	SSVR	TO/VR	Total	SSVR	TO/VR
132	2,407 1.24%	Total:	196,710	43.1	56.9	13.3	14.1	28.5	41.7	2020	83,606	111,915	15.6 %	74.7 %	104,231	15.7 %	80.2 %
		VAP:	142,413	46.0	54.0	12.7	13.2	26.8	39.3	2018	56,114	96,718	14.8 %	58.0 %	88,276	15.1 %	63.6 %
149	476 0.24%	Total:	194,779	13.3	86.7	19.5	27.0	40.4	66.2	2020	57,322	93,073	23.7 %	61.6 %	85,864	24.2 %	66.8 %
		VAP:	146,336	14.9	85.1	21.2	25.2	38.6	62.8	2018	39,061	88,071	23.1 %	44.4 %	79,300	24.0 %	49.3 %

Plan Fit Verification
HOUSE DISTRICTS
PLANH2215 Compared with PLANH2187

The amendment fits into the base plan.

**American Community Survey Special Tabulation
 Using Census and American Community Survey Data
 HOUSE DISTRICTS - PLANH2215**

2020 Census			Special Tabulation of Citizen Voting Age Population (CVAP) from the 2017-2021 American Community Survey with Margins of Error												
			CVAP	Hispanic CVAP % Hispanic	Not Hispanic or Latino Citizen Voting Age Population (CVAP)										
District	Total	VAP			% Black Alone	% Black + White	% Black + American Indian	% White Alone	% American Indian Alone	% Asian Alone	% Native Hawaiian Alone	% American Indian + White	% Asian + White	% Remainder 2 or More Other	
132	196,710	142,413	120,060 (±4,996)	22.0 (±2.0)	10.2 (±1.2)	0.8 (±0.4)	0.0(±0.1)	55.3 (±1.9)	0.3 (±0.2)	9.9 (±1.7)	0.0 (±0.1)	0.5 (±0.3)	0.7 (±0.4)	0.3 (±0.2)	
149	194,779	146,336	110,720 (±4,534)	31.6 (±2.4)	25.7 (±2.0)	0.5 (±0.2)	0.1(±0.2)	21.1 (±1.6)	0.1 (±0.2)	20.1 (±1.5)	0.0 (±0.1)	0.2 (±0.2)	0.4 (±0.2)	0.3 (±0.2)	

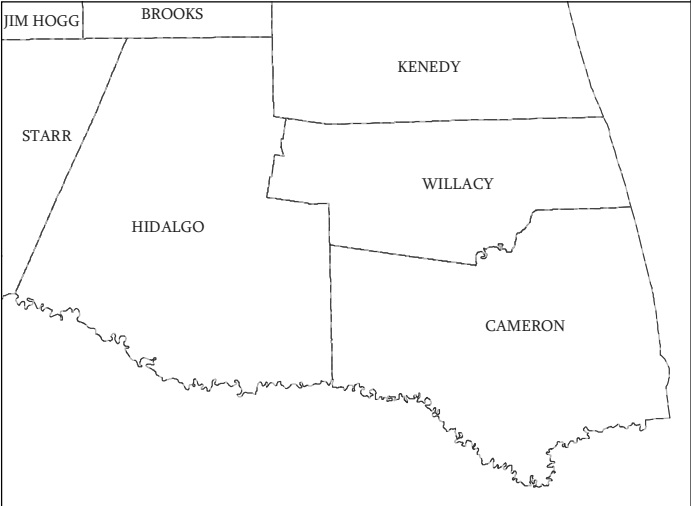
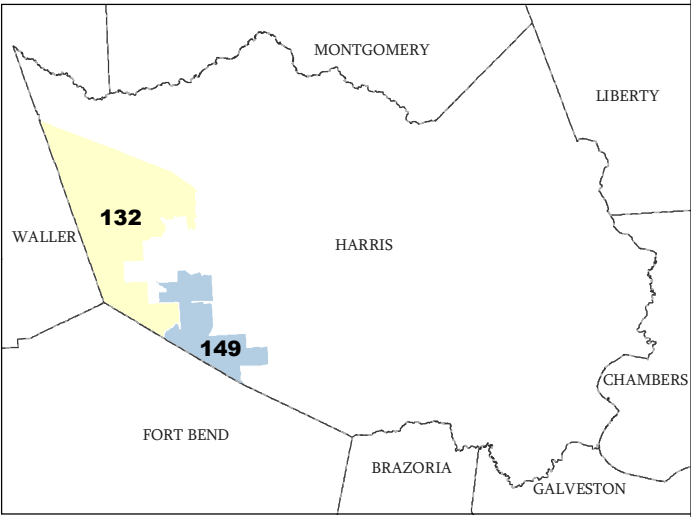
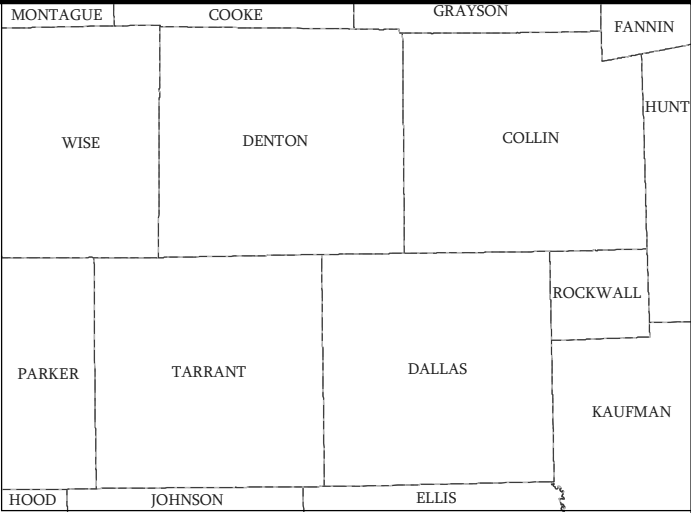
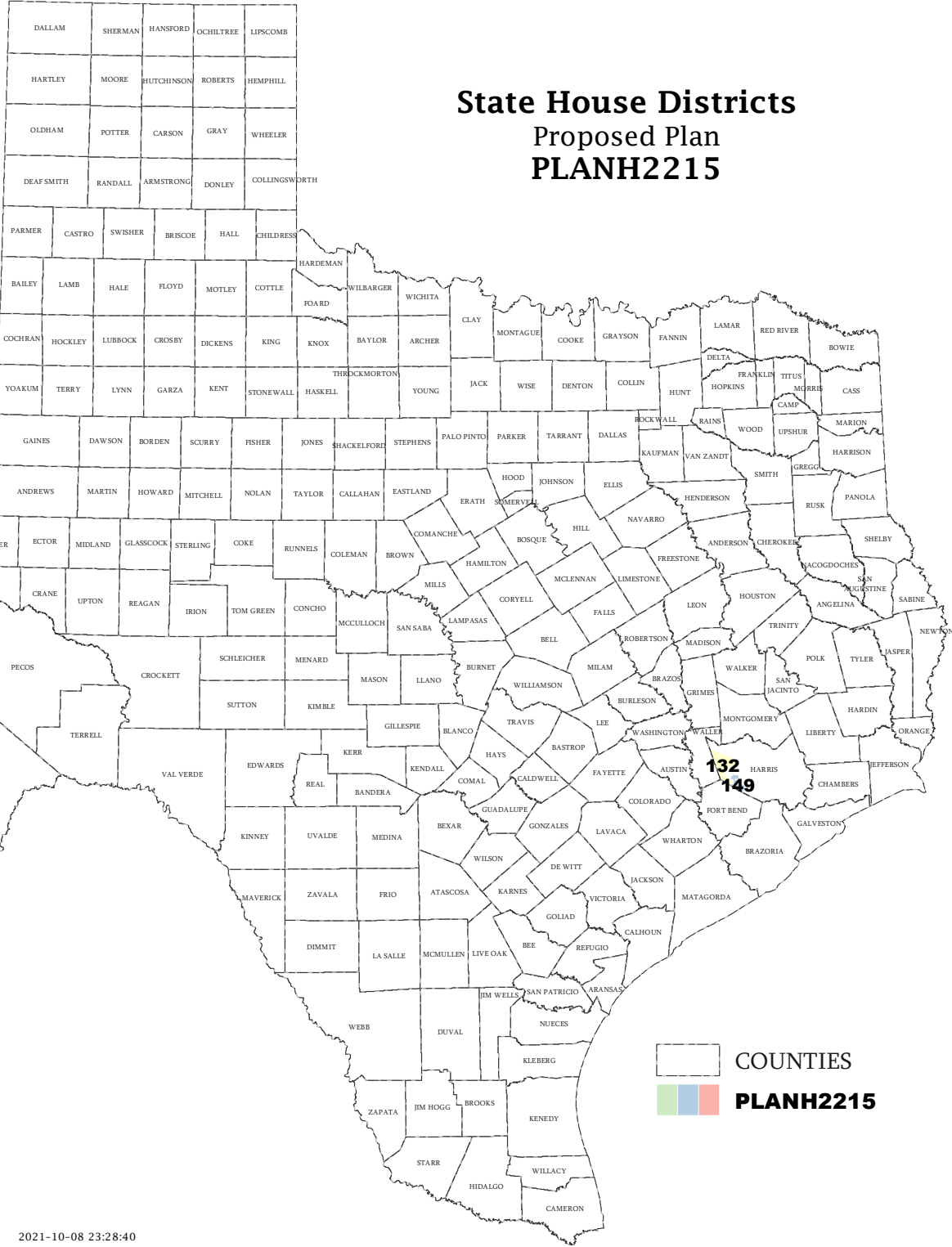
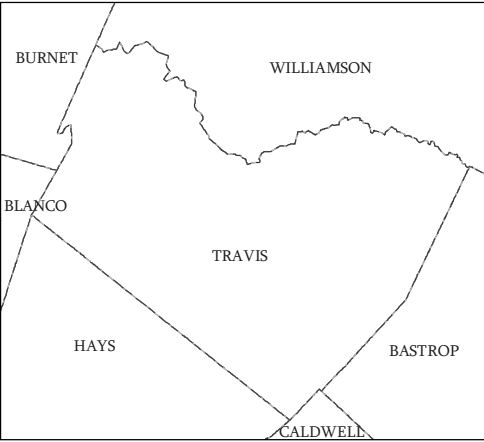
The American Community Survey provided estimated citizen voting age population (CVAP) data at the block group level in a Special Tabulation. Because the MOE can only be calculated using whole block groups, all block groups with more than 50% of the population in a district are included in the analysis. The Red-118 report provides a summary of the block groups used in the analysis.
 The percent for each CVAP population category is that group's CVAP divided by the CVAP total.
 Numbers in parentheses are margins of error at 90% confidence level.

Incumbents by District

HOUSE DISTRICTS - PLANH2215

District	Incumbents
132	Schofield - R
149	Vo - D

State House Districts Proposed Plan PLANH2215

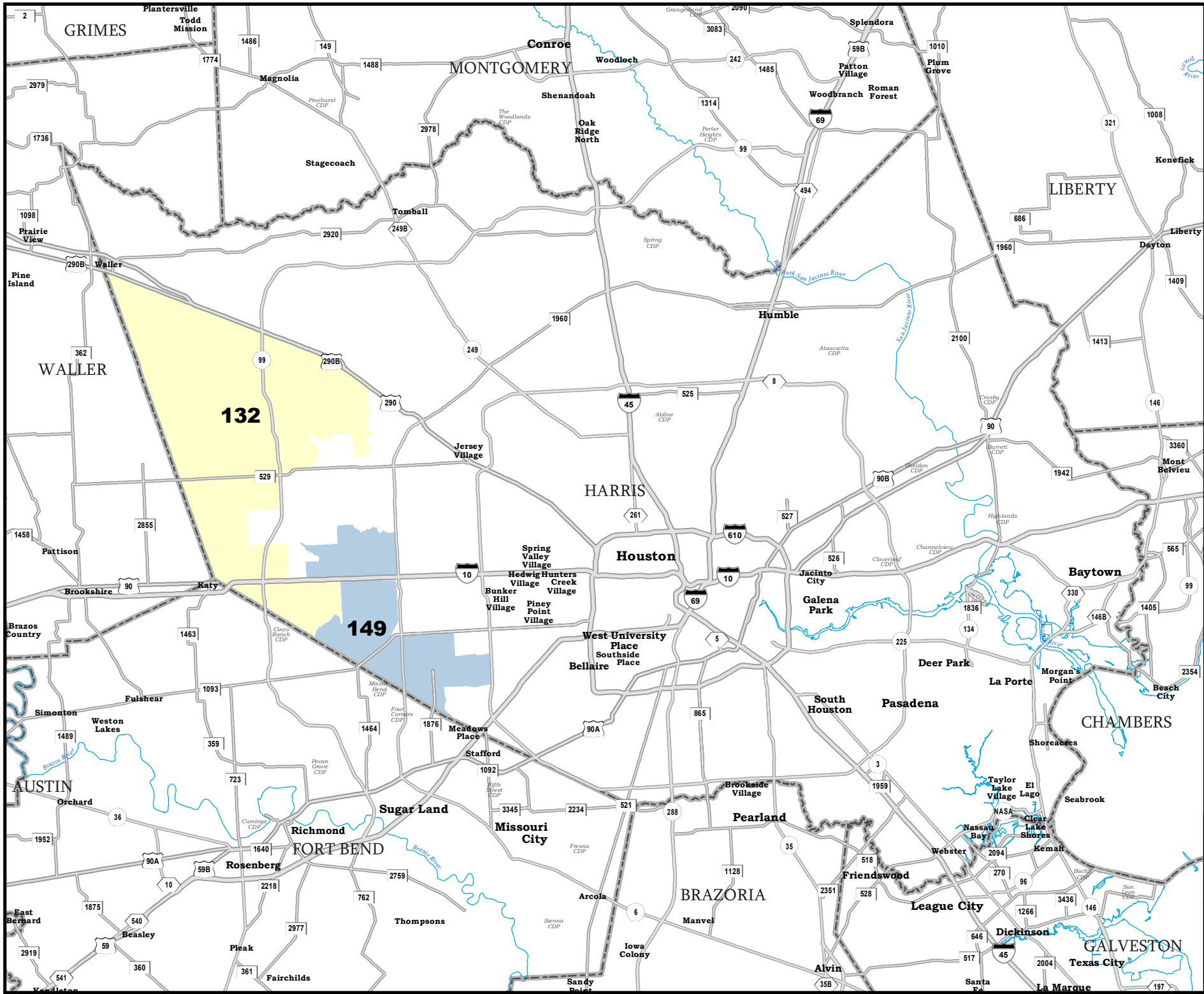


COUNTIES
PLANH2215

Map ID 5900
10/08/21 23:44:21



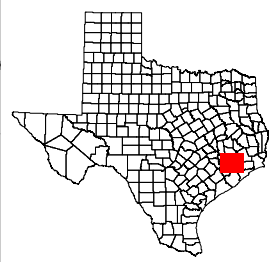
49336
2020 Census
PLANH2215 2021-10-08 23:28:40



HARRIS COUNTY

State House Districts Proposed Plan PLANH2215

 COUNTIES
 PLANH2215



Map ID 5900
10/08/21 23:44:21



49336
2020 Census
PLANH2215 2021-10-08 23:28:40