

District Population Analysis with County Subtotals
SENATE DISTRICTS - PLANS2137

Total State Population	29,145,505
Total Districts Required	31
Ideal District Population	940,178
Unassigned Population	26,291,511
Districts in Plan	3
Unassigned Geography	Yes
Districts Contiguous	Yes

	Population	-----Deviation-----	
		Total	Percent
Plan Overall Range		19,537	2.08%
Smallest District (18)	940,877	699	0.07%
Largest District (4)	960,414	20,236	2.15%
Average (mean)	951,331	11,153	1.18%

PLANS2137

District Population Analysis with County Subtotals

SENATE DISTRICTS - PLANS2137

	Deviation		Total	Anglo	Non-Anglo	Asian	Black	Hispanic	B+H	%Anglo	%Non-Anglo	%Asian	%Black	%Hispanic	%B+H
DISTRICT 4	20,236	Total:	960,414	534,201	426,213	39,069	103,021	264,281	361,607	55.6	44.4	4.1	10.7	27.5	37.7
	2.15 %	VAP:	708,105	420,555	287,550	27,421	71,244	172,017	240,649	59.4	40.6	3.9	10.1	24.3	34.0
Chambers (100%)			46,571	29,858	16,713	879	3,763	10,952	14,512	64.1	35.9	1.9	8.1	23.5	31.2
Galveston (1%)			2,770	2,289	481	38	37	321	349	82.6	17.4	1.4	1.3	11.6	12.6
Harris (5%)			229,507	111,052	118,455	8,298	37,678	68,799	104,475	48.4	51.6	3.6	16.4	30.0	45.5
Jefferson (24%)			61,123	19,599	41,524	2,153	18,769	20,120	38,513	32.1	67.9	3.5	30.7	32.9	63.0
Montgomery (100%)			620,443	371,403	249,040	27,701	42,774	164,089	203,758	59.9	40.1	4.5	6.9	26.4	32.8
DISTRICT 7	12,525	Total:	952,703	389,481	563,222	100,298	159,031	296,499	446,079	40.9	59.1	10.5	16.7	31.1	46.8
	1.33 %	VAP:	701,226	307,831	393,395	73,961	108,859	201,903	306,078	43.9	56.1	10.5	15.5	28.8	43.6
Harris (20%)			952,703	389,481	563,222	100,298	159,031	296,499	446,079	40.9	59.1	10.5	16.7	31.1	46.8
DISTRICT 18	699	Total:	940,877	358,776	582,101	124,690	158,300	293,203	443,229	38.1	61.9	13.3	16.8	31.2	47.1
	0.07 %	VAP:	701,436	291,308	410,128	91,072	110,616	200,403	307,292	41.5	58.5	13.0	15.8	28.6	43.8
Aransas (100%)			23,830	15,816	8,014	655	394	6,158	6,486	66.4	33.6	2.7	1.7	25.8	27.2
Austin (100%)			30,167	18,480	11,687	304	2,791	8,052	10,630	61.3	38.7	1.0	9.3	26.7	35.2
Burleson (100%)			17,642	11,258	6,384	118	2,145	3,712	5,737	63.8	36.2	0.7	12.2	21.0	32.5
Calhoun (100%)			20,106	8,374	11,732	1,169	534	9,858	10,271	41.6	58.4	5.8	2.7	49.0	51.1
De Witt (100%)			19,824	10,854	8,970	105	1,867	6,890	8,564	54.8	45.2	0.5	9.4	34.8	43.2
Fayette (100%)			24,435	17,041	7,394	129	1,722	5,216	6,785	69.7	30.3	0.5	7.0	21.3	27.8
Fort Bend (45%)			366,399	95,874	270,525	95,081	76,411	98,651	171,916	26.2	73.8	26.0	20.9	26.9	46.9
Goliad (100%)			7,012	4,246	2,766	60	349	2,288	2,569	60.6	39.4	0.9	5.0	32.6	36.6
Gonzales (100%)			19,653	8,159	11,494	122	1,391	9,897	11,074	41.5	58.5	0.6	7.1	50.4	56.3
Grimes (100%)			29,268	16,910	12,358	195	4,217	7,361	11,400	57.8	42.2	0.7	14.4	25.2	39.0
Harris (4%)			169,291	47,078	122,213	23,675	37,964	60,413	96,370	27.8	72.2	14.0	22.4	35.7	56.9
Lavaca (100%)			20,337	14,564	5,773	114	1,497	3,936	5,316	71.6	28.4	0.6	7.4	19.4	26.1
Lee (100%)			17,478	10,612	6,866	123	1,945	4,479	6,287	60.7	39.3	0.7	11.1	25.6	36.0
Refugio (100%)			6,741	2,864	3,877	61	534	3,306	3,735	42.5	57.5	0.9	7.9	49.0	55.4
Victoria (100%)			91,319	39,330	51,989	1,758	6,843	42,931	48,751	43.1	56.9	1.9	7.5	47.0	53.4
Waller (73%)			41,570	15,293	26,277	327	11,652	13,630	25,050	36.8	63.2	0.8	28.0	32.8	60.3
Washington (100%)			35,805	22,023	13,782	694	6,044	6,425	12,288	61.5	38.5	1.9	16.9	17.9	34.3

**Population and Voter Data
 with Voter Registration Comparison
 SENATE DISTRICTS - PLANS2137**

District	Deviation		Population								Total Voter Registration			Non-Suspense Voter Registration			
			Total	%Anglo	%Non-Anglo	%Asian	%Black	%Hispanic	%B+H	General Election	Turnout	Total	SSVR	TO/VR	Total	SSVR	TO/VR
4	20,236 2.15%	Total:	960,414	55.6	44.4	4.1	10.7	27.5	37.7	2020	415,847	582,328	12.3 %	71.4 %	529,758	12.5 %	78.5 %
		VAP:	708,105	59.4	40.6	3.9	10.1	24.3	34.0	2018	296,853	531,321	11.5 %	55.9 %	473,467	11.7 %	62.7 %
7	12,525 1.33%	Total:	952,703	40.9	59.1	10.5	16.7	31.1	46.8	2020	401,932	559,658	16.8 %	71.8 %	518,023	17.1 %	77.6 %
		VAP:	701,226	43.9	56.1	10.5	15.5	28.8	43.6	2018	293,722	518,842	15.9 %	56.6 %	471,605	16.3 %	62.3 %
18	699 0.07%	Total:	940,877	38.1	61.9	13.3	16.8	31.2	47.1	2020	385,781	553,331	19.5 %	69.7 %	511,182	19.5 %	75.5 %
		VAP:	701,436	41.5	58.5	13.0	15.8	28.6	43.8	2018	272,895	503,078	19.5 %	54.2 %	459,088	19.5 %	59.4 %

For technical reasons, election results in Texas Legislative Council reports may vary slightly from the official election results. Complete official results for all elections are maintained by the Office of the Texas Secretary of State.
 SSVR = Spanish surname voter registration

Plan Fit Verification
SENATE DISTRICTS
PLANS2137 Compared with PLANS2130

The amendment fits into the base plan.

American Community Survey Special Tabulation
 Using Census and American Community Survey Data
SENATE DISTRICTS - PLANS2137

Special Tabulation of Citizen Voting Age Population (CVAP) from the 2017-2021 American Community Survey with Margins of Error														
2020 Census			Hispanic CVAP	Not Hispanic or Latino Citizen Voting Age Population (CVAP)										
District	Total	VAP		% Hispanic	% Black Alone	% Black + White	% Black + American Indian	% White Alone	% American Indian Alone	% Asian Alone	% Native Hawaiian Alone	% American Indian + White	% Asian + White	% Remainder 2 or More Other
4	960,414	708,105	620,130 (±10,245)	17.7 (±0.7)	9.6 (±0.5)	0.5 (±0.1)	0.0(±0.1)	68.5 (±0.8)	0.2 (±0.1)	2.3 (±0.2)	0.1 (±0.1)	0.6 (±0.1)	0.3 (±0.1)	0.2 (±0.1)
7	952,703	701,226	589,960 (±10,877)	23.8 (±0.9)	15.6 (±0.9)	0.4 (±0.1)	0.0(±0.1)	51.2 (±0.7)	0.1 (±0.1)	7.6 (±0.5)	0.0 (±0.1)	0.4 (±0.1)	0.6 (±0.1)	0.3 (±0.1)
18	940,877	701,436	607,005 (±10,235)	26.8 (±0.9)	15.1 (±0.7)	0.4 (±0.1)	0.1(±0.1)	46.6 (±0.6)	0.2 (±0.1)	10.1 (±0.7)	0.0 (±0.1)	0.4 (±0.1)	0.3 (±0.1)	0.1 (±0.1)

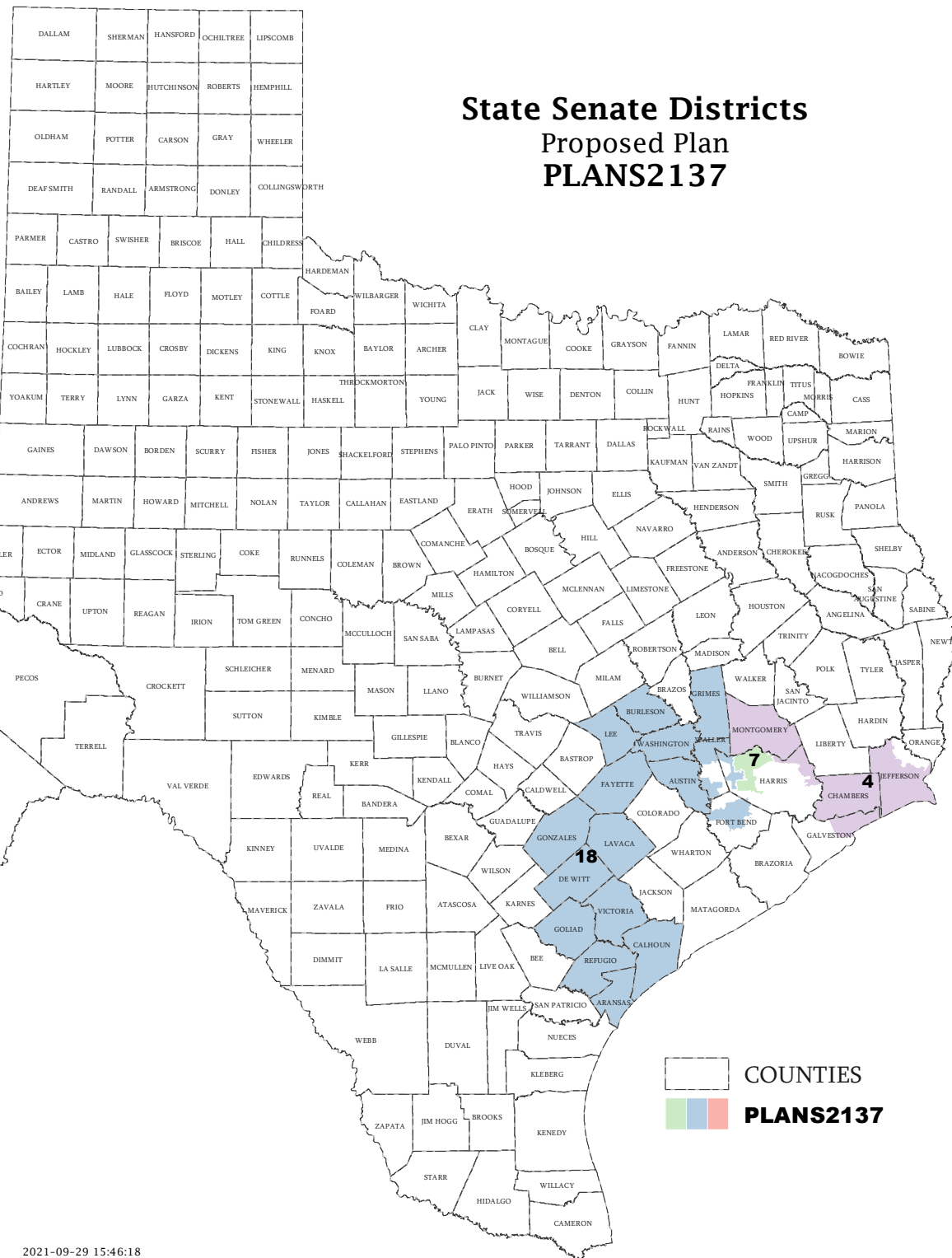
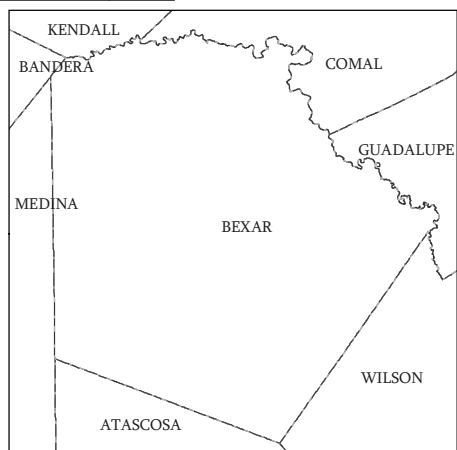
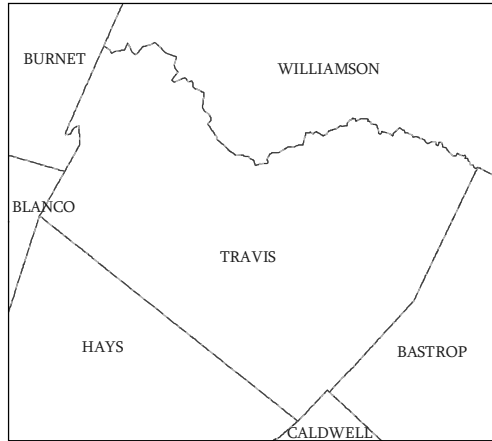
The American Community Survey provided estimated citizen voting age population (CVAP) data at the block group level in a Special Tabulation. Because the MOE can only be calculated using whole block groups, all block groups with more than 50% of the population in a district are included in the analysis. The Red-118 report provides a summary of the block groups used in the analysis.
 The percent for each CVAP population category is that group's CVAP divided by the CVAP total.
 Numbers in parentheses are margins of error at 90% confidence level.

Incumbents by District

SENATE DISTRICTS - PLANS2137

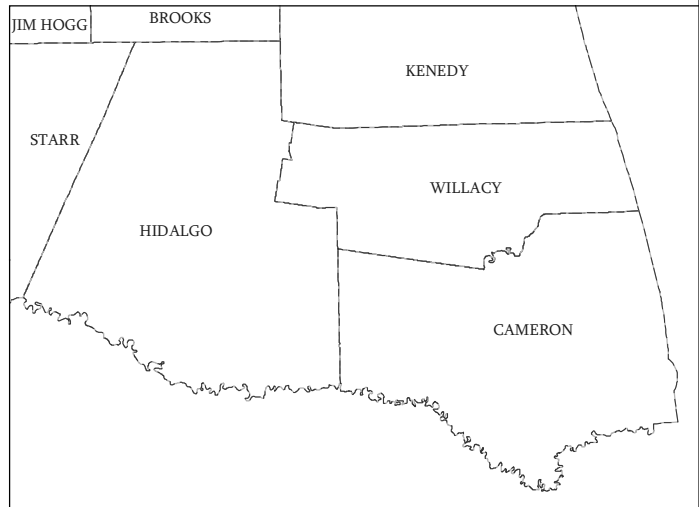
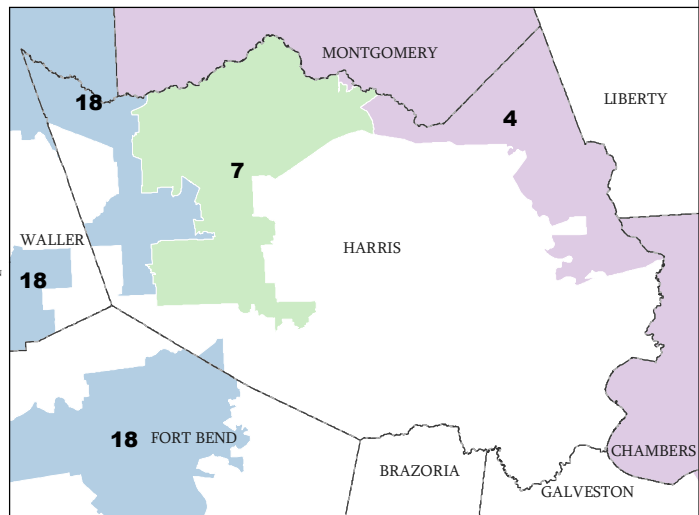
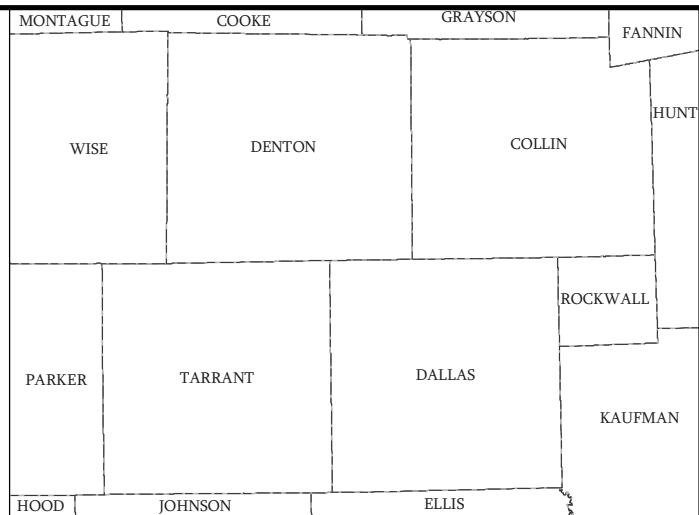
District	Incumbents
4	Creighton - R
7	Bettencourt - R
18	Kolkhorst - R

State Senate Districts Proposed Plan PLANS2137



COUNTIES

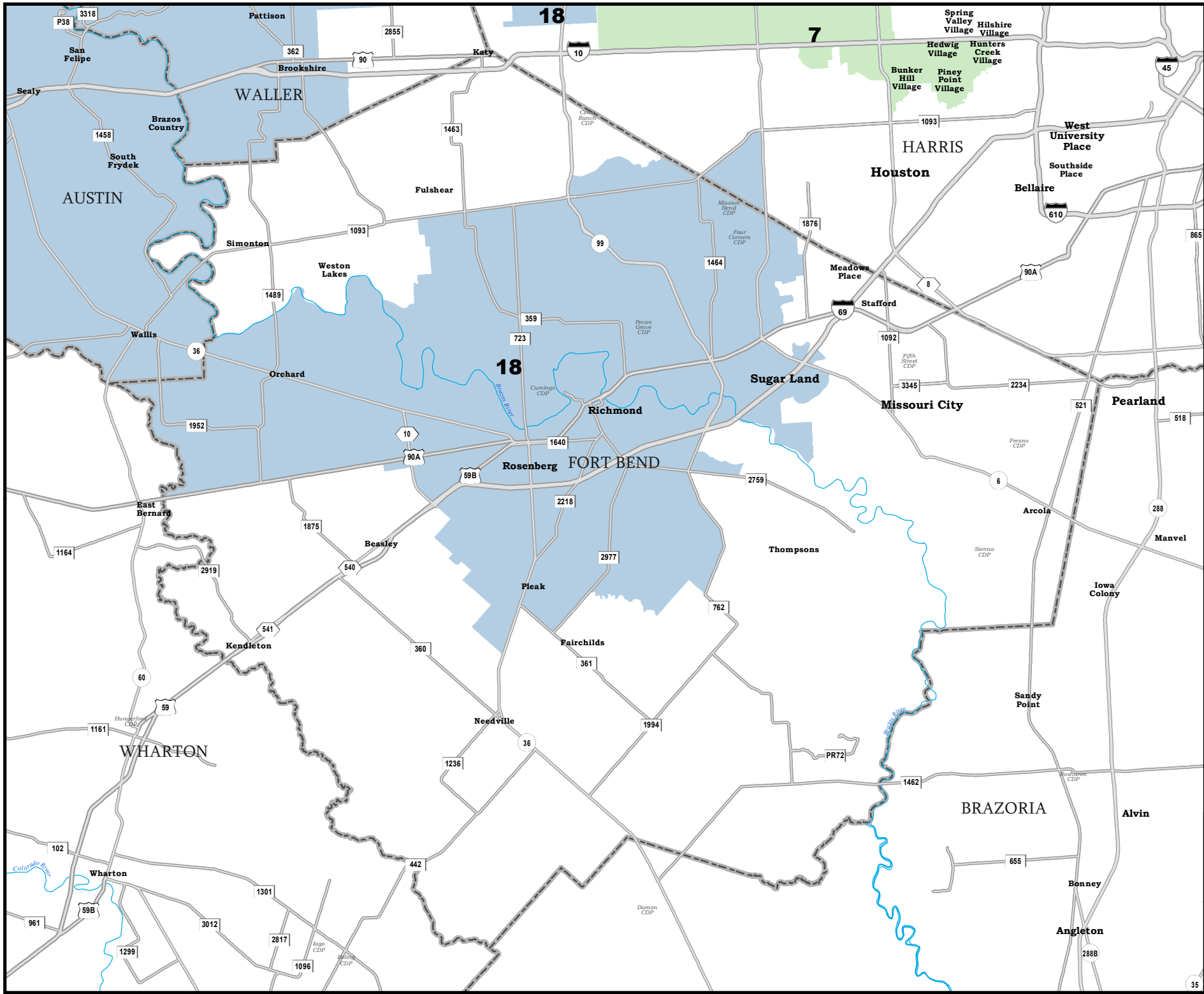
PLANS2137



Map ID 5900
09/29/21 15:47:00



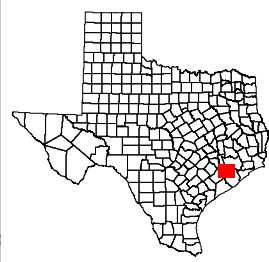
48429
2020 Census
PLANS2137 2021-09-29 15:46:18



FORT BEND COUNTY

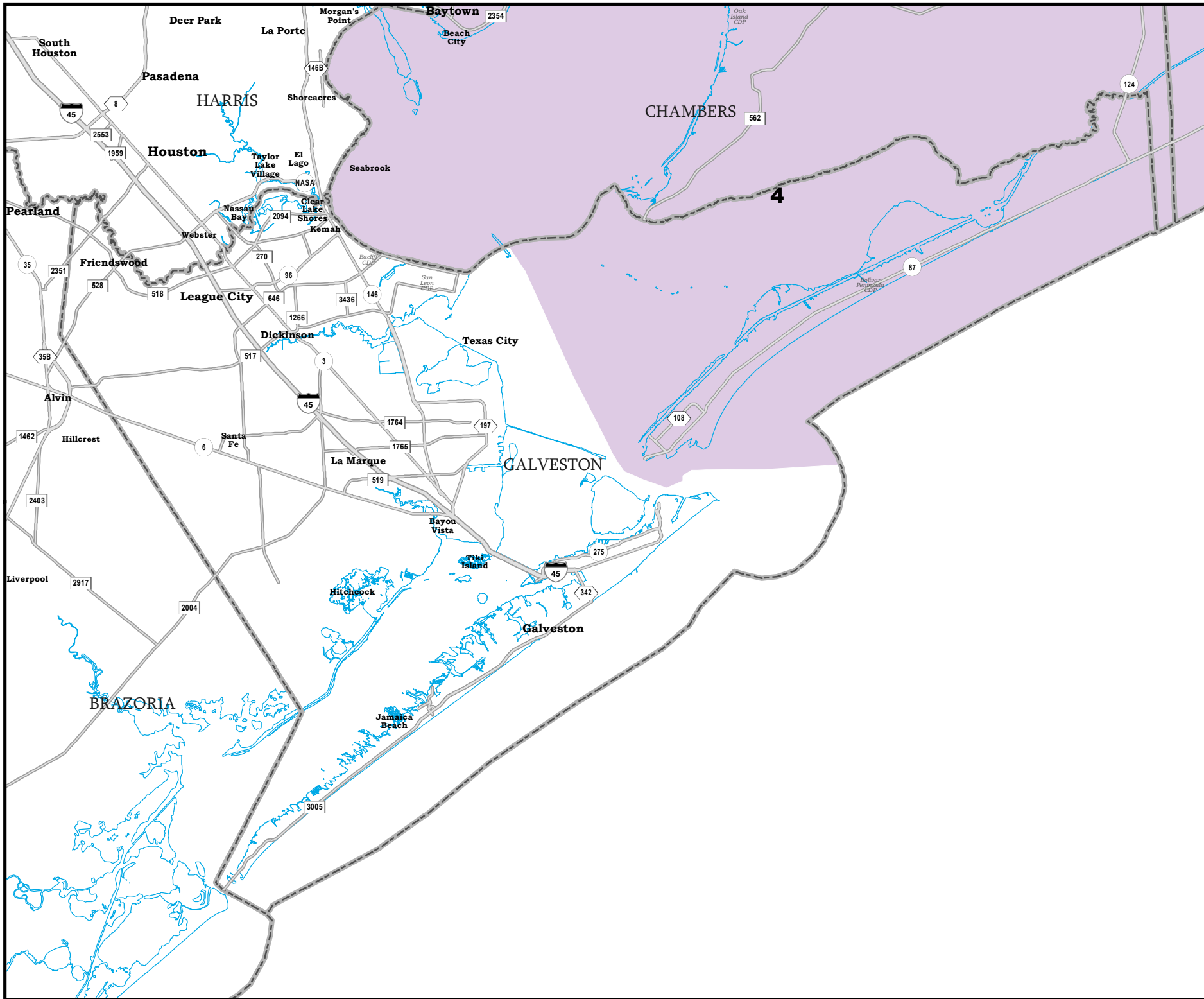
State Senate Districts Proposed Plan PLANS2137

 COUNTIES
 **PLANS2137**



48429
2020 Census
PLANS2137 2021-09-29 15:46:18



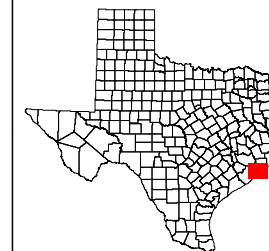


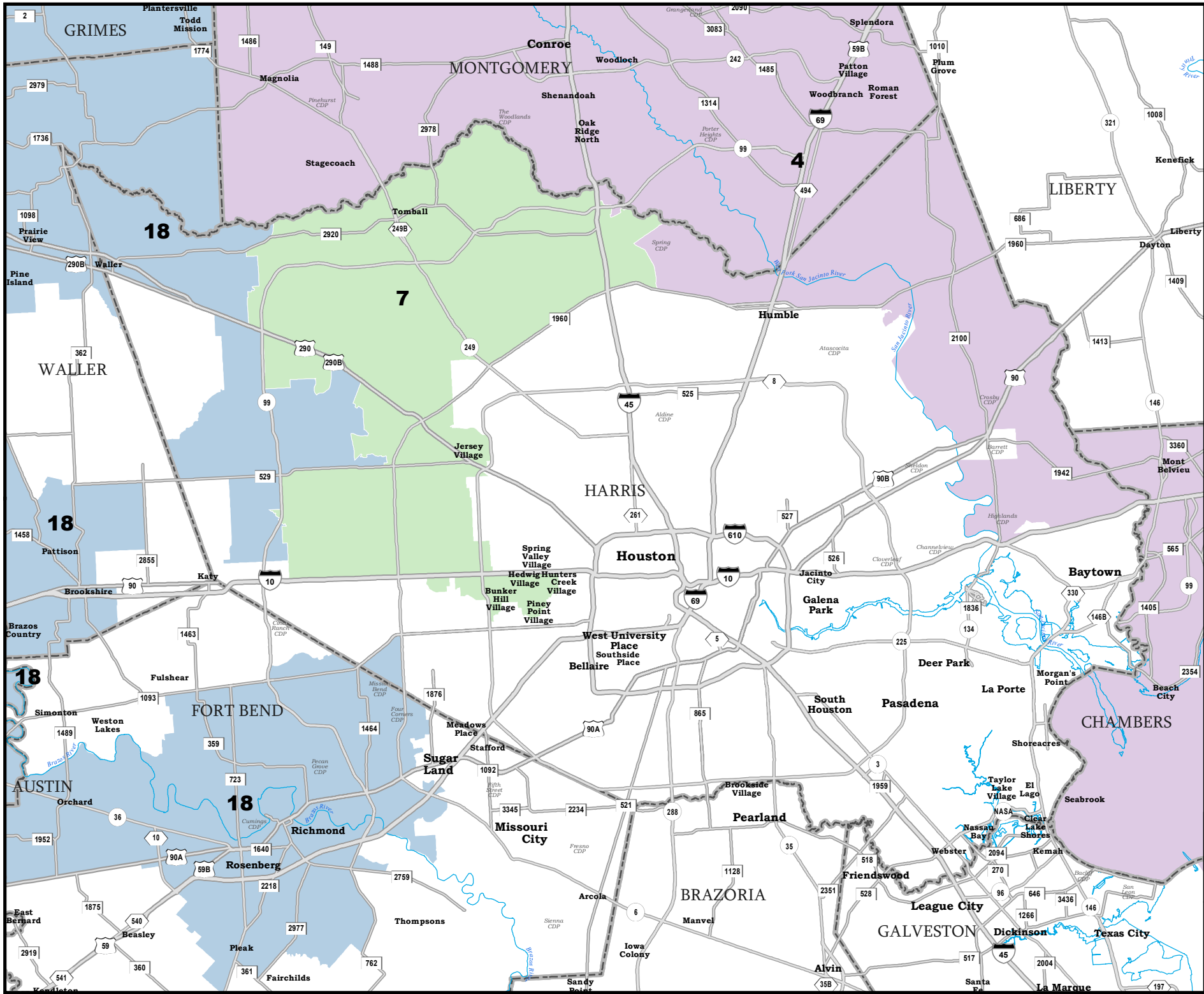
GALVESTON COUNTY

State Senate Districts Proposed Plan PLANS2137

 COUNTIES

 **PLANS2137**

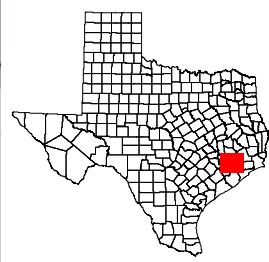


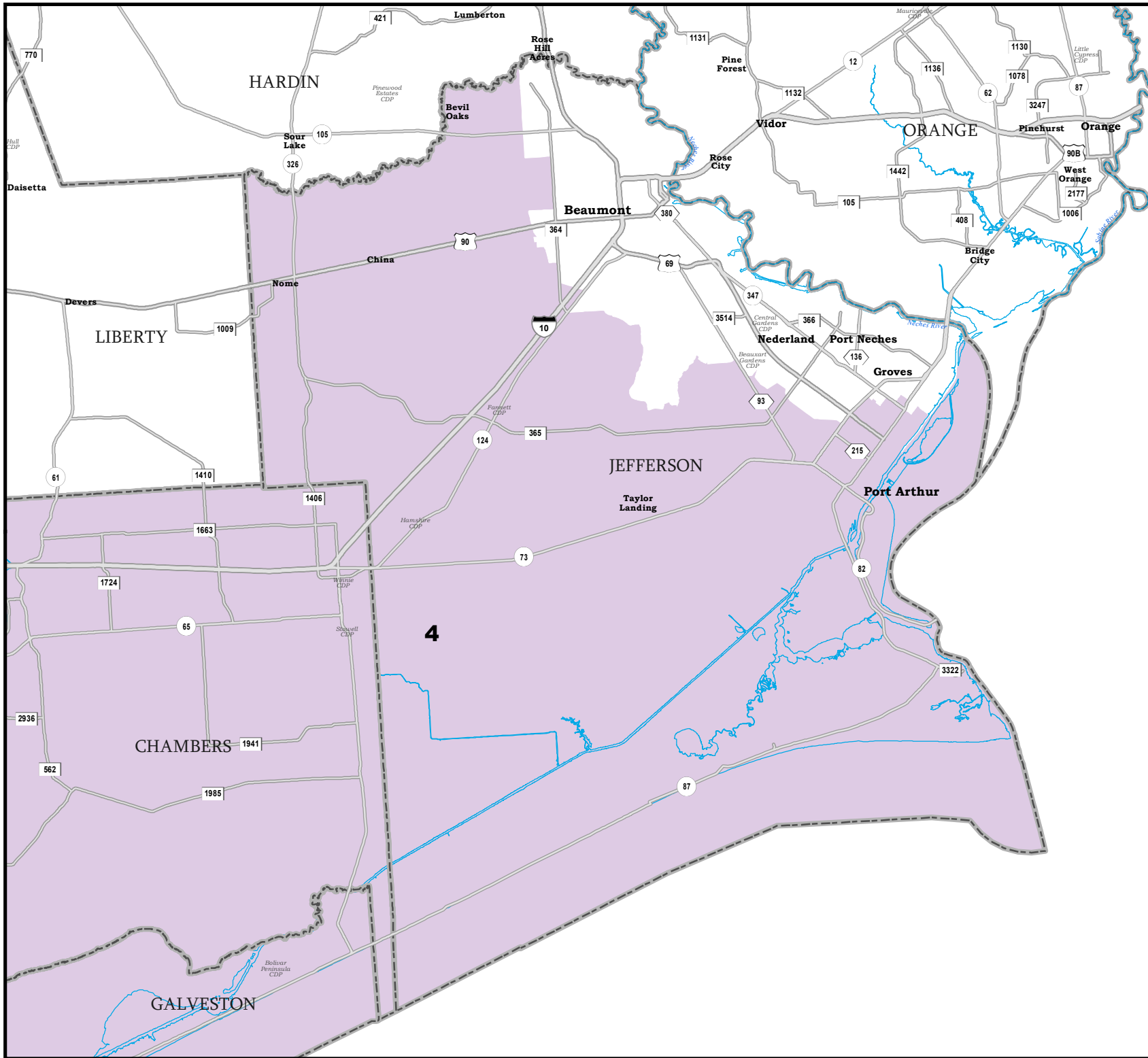


HARRIS COUNTY

State Senate Districts Proposed Plan PLANS2137

 COUNTIES
 **PLANS2137**



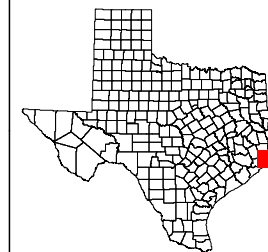


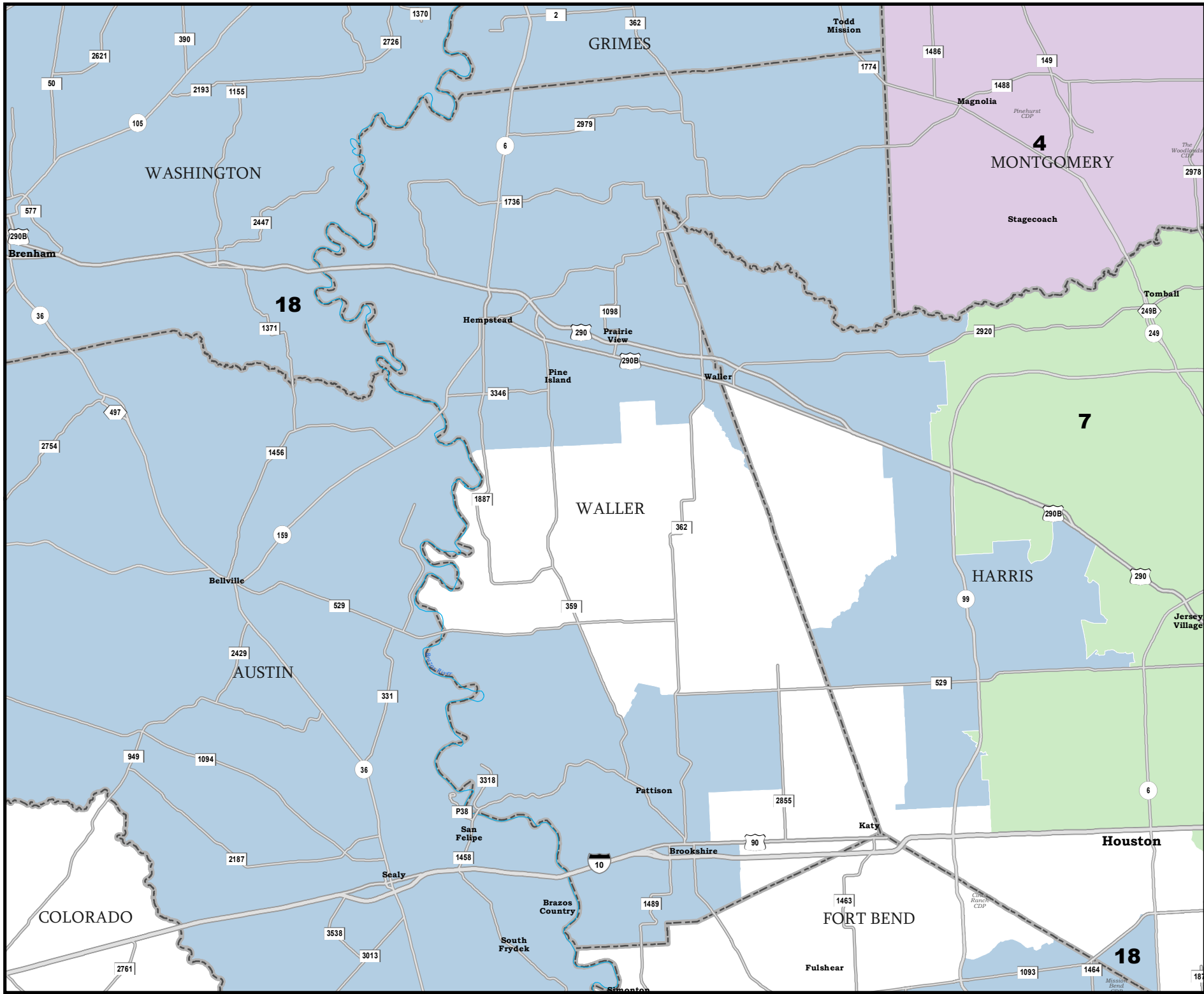
JEFFERSON COUNTY

State Senate Districts Proposed Plan PLANS2137

 COUNTIES

 **PLANS2137**

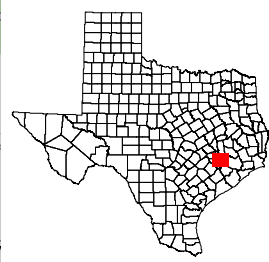




WALLER COUNTY

State Senate Districts
Proposed Plan
PLANS2137

 COUNTIES
 **PLANS2137**



Map ID 5900
 09/29/21 15:47:00
 48429
 2020 Census
 PLANS2137 2021-09-29 15:46:18
