

District Population Analysis with County Subtotals
SENATE DISTRICTS - PLANS2141

Total State Population	29,145,505
Total Districts Required	31
Ideal District Population	940,178
Unassigned Population	25,400,887
Districts in Plan	4
Unassigned Geography	Yes
Districts Contiguous	Yes

	Population	-----Deviation-----	
		Total	Percent
Plan Overall Range		45,561	4.85%
Smallest District (17)	914,054	-26,124	-2.78%
Largest District (4)	959,615	19,437	2.07%
Average (mean)	936,155	15,405	1.64%

PLANS2141

District Population Analysis with County Subtotals

SENATE DISTRICTS - PLANS2141

	Deviation		Total	Anglo	Non-Anglo	Asian	Black	Hispanic	B+H	%Anglo	%Non-Anglo	%Asian	%Black	%Hispanic	%B+H
DISTRICT 4	19,437	Total:	959,615	496,471	463,144	43,055	129,243	273,480	396,144	51.7	48.3	4.5	13.5	28.5	41.3
	2.07 %	VAP:	708,861	393,542	315,319	30,936	89,788	179,294	265,990	55.5	44.5	4.4	12.7	25.3	37.5
Chambers (100%)			46,571	29,858	16,713	879	3,763	10,952	14,512	64.1	35.9	1.9	8.1	23.5	31.2
Galveston (1%)			2,770	2,289	481	38	37	321	349	82.6	17.4	1.4	1.3	11.6	12.6
Harris (7%)			327,530	140,266	187,264	15,183	67,803	100,264	164,830	42.8	57.2	4.6	20.7	30.6	50.3
Jefferson (24%)			61,123	19,599	41,524	2,153	18,769	20,120	38,513	32.1	67.9	3.5	30.7	32.9	63.0
Montgomery (84%)			521,621	304,459	217,162	24,802	38,871	141,823	177,940	58.4	41.6	4.8	7.5	27.2	34.1
DISTRICT 5	-12,732	Total:	927,446	505,469	421,977	50,212	106,136	251,718	350,384	54.5	45.5	5.4	11.4	27.1	37.8
	-1.35 %	VAP:	715,688	416,175	299,513	36,572	76,906	172,344	245,617	58.2	41.8	5.1	10.7	24.1	34.3
Bastrop (100%)			97,216	45,751	51,465	1,287	6,873	41,484	47,762	47.1	52.9	1.3	7.1	42.7	49.1
Brazos (100%)			233,849	123,035	110,814	16,856	27,910	63,067	88,787	52.6	47.4	7.2	11.9	27.0	38.0
Freestone (100%)			19,435	12,817	6,618	143	3,038	3,155	6,112	65.9	34.1	0.7	15.6	16.2	31.4
Leon (100%)			15,719	11,659	4,060	153	1,059	2,446	3,469	74.2	25.8	1.0	6.7	15.6	22.1
Limestone (100%)			22,146	12,530	9,616	245	4,117	5,013	8,945	56.6	43.4	1.1	18.6	22.6	40.4
Madison (100%)			13,455	6,984	6,471	131	2,724	3,415	6,099	51.9	48.1	1.0	20.2	25.4	45.3
Milam (100%)			24,754	15,367	9,387	193	2,520	6,264	8,582	62.1	37.9	0.8	10.2	25.3	34.7
Robertson (100%)			16,757	9,505	7,252	145	3,381	3,528	6,789	56.7	43.3	0.9	20.2	21.1	40.5
San Jacinto (100%)			27,402	19,170	8,232	176	2,412	4,822	7,143	70.0	30.0	0.6	8.8	17.6	26.1
Walker (94%)			71,922	36,864	35,058	1,309	16,403	16,161	32,228	51.3	48.7	1.8	22.8	22.5	44.8
Williamson (63%)			384,791	211,787	173,004	29,574	35,699	102,363	134,468	55.0	45.0	7.7	9.3	26.6	34.9
DISTRICT 17	-26,124	Total:	914,054	409,344	504,710	123,582	119,412	253,057	364,987	44.8	55.2	13.5	13.1	27.7	39.9
	-2.78 %	VAP:	685,345	326,536	358,809	89,569	84,916	175,444	256,515	47.6	52.4	13.1	12.4	25.6	37.4
Brazoria (32%)			119,236	64,023	55,213	2,184	11,229	39,831	50,038	53.7	46.3	1.8	9.4	33.4	42.0
Colorado (34%)			7,073	3,558	3,515	31	988	2,466	3,379	50.3	49.7	0.4	14.0	34.9	47.8
Fort Bend (34%)			276,888	128,191	148,697	63,504	28,280	53,372	80,176	46.3	53.7	22.9	10.2	19.3	29.0
Harris (9%)			402,820	163,376	239,444	55,779	66,186	115,281	177,484	40.6	59.4	13.8	16.4	28.6	44.1
Jackson (100%)			14,988	8,510	6,478	228	1,186	4,829	5,877	56.8	43.2	1.5	7.9	32.2	39.2
Matagorda (100%)			36,255	15,355	20,900	856	4,330	15,455	19,466	42.4	57.6	2.4	11.9	42.6	53.7
Waller (27%)			15,224	8,201	7,023	736	1,175	4,856	5,935	53.9	46.1	4.8	7.7	31.9	39.0
Wharton (100%)			41,570	18,130	23,440	264	6,038	16,967	22,632	43.6	56.4	0.6	14.5	40.8	54.4
DISTRICT 18	3,325	Total:	943,503	376,130	567,373	120,367	152,476	287,527	432,071	39.9	60.1	12.8	16.2	30.5	45.8
	0.35 %	VAP:	706,103	305,590	400,513	88,079	107,223	196,470	300,177	43.3	56.7	12.5	15.2	27.8	42.5
Aransas (100%)			23,830	15,816	8,014	655	394	6,158	6,486	66.4	33.6	2.7	1.7	25.8	27.2
Austin (100%)			30,167	18,480	11,687	304	2,791	8,052	10,630	61.3	38.7	1.0	9.3	26.7	35.2
Burleson (100%)			17,642	11,258	6,384	118	2,145	3,712	5,737	63.8	36.2	0.7	12.2	21.0	32.5
Calhoun (100%)			20,106	8,374	11,732	1,169	534	9,858	10,271	41.6	58.4	5.8	2.7	49.0	51.1
Colorado (66%)			13,484	8,203	5,281	101	1,547	3,524	4,957	60.8	39.2	0.7	11.5	26.1	36.8

District Population Analysis with County Subtotals

SENATE DISTRICTS - PLANS2141

	Deviation		Total	Anglo	Non-Anglo	Asian	Black	Hispanic	B+H	%Anglo	%Non-Anglo	%Asian	%Black	%Hispanic	%B+H
DISTRICT 18	3,325	Total:	943,503	376,130	567,373	120,367	152,476	287,527	432,071	39.9	60.1	12.8	16.2	30.5	45.8
	0.35 %	VAP:	706,103	305,590	400,513	88,079	107,223	196,470	300,177	43.3	56.7	12.5	15.2	27.8	42.5
De Witt (100%)			19,824	10,854	8,970	105	1,867	6,890	8,564	54.8	45.2	0.5	9.4	34.8	43.2
Fayette (100%)			24,435	17,041	7,394	129	1,722	5,216	6,785	69.7	30.3	0.5	7.0	21.3	27.8
Fort Bend (43%)			351,572	88,108	263,464	93,633	73,766	95,893	166,604	25.1	74.9	26.6	21.0	27.3	47.4
Goliad (100%)			7,012	4,246	2,766	60	349	2,288	2,569	60.6	39.4	0.9	5.0	32.6	36.6
Gonzales (100%)			19,653	8,159	11,494	122	1,391	9,897	11,074	41.5	58.5	0.6	7.1	50.4	56.3
Grimes (100%)			29,268	16,910	12,358	195	4,217	7,361	11,400	57.8	42.2	0.7	14.4	25.2	39.0
Harris (3%)			135,242	36,643	98,599	20,206	30,954	47,284	76,729	27.1	72.9	14.9	22.9	35.0	56.7
Lavaca (100%)			20,337	14,564	5,773	114	1,497	3,936	5,316	71.6	28.4	0.6	7.4	19.4	26.1
Lee (100%)			17,478	10,612	6,866	123	1,945	4,479	6,287	60.7	39.3	0.7	11.1	25.6	36.0
Montgomery (5%)			33,540	24,393	9,147	467	1,328	6,270	7,486	72.7	27.3	1.4	4.0	18.7	22.3
Refugio (100%)			6,741	2,864	3,877	61	534	3,306	3,735	42.5	57.5	0.9	7.9	49.0	55.4
Victoria (100%)			91,319	39,330	51,989	1,758	6,843	42,931	48,751	43.1	56.9	1.9	7.5	47.0	53.4
Walker (6%)			4,478	2,959	1,519	26	956	417	1,352	66.1	33.9	0.6	21.3	9.3	30.2
Waller (73%)			41,570	15,293	26,277	327	11,652	13,630	25,050	36.8	63.2	0.8	28.0	32.8	60.3
Washington (100%)			35,805	22,023	13,782	694	6,044	6,425	12,288	61.5	38.5	1.9	16.9	17.9	34.3

Incumbents by District

SENATE DISTRICTS - PLANS2141

District	Incumbents
4	Creighton - R
5	Schwertner - R
17	Huffman - R
18	Kolkhorst - R

American Community Survey Special Tabulation
 Using Census and American Community Survey Data
SENATE DISTRICTS - PLANS2141

Special Tabulation of Citizen Voting Age Population (CVAP) from the 2017-2021 American Community Survey with Margins of Error														
2020 Census			Hispanic CVAP	Not Hispanic or Latino Citizen Voting Age Population (CVAP)										
District	Total	VAP		% Hispanic	% Black Alone	% Black + White	% Black + American Indian	% White Alone	% American Indian Alone	% Asian Alone	% Native Hawaiian Alone	% American Indian + White	% Asian + White	% Remainder 2 or More Other
4	959,615	708,861	615,715 (±10,113)	19.1 (±0.7)	11.8 (±0.6)	0.6 (±0.2)	0.0(±0.1)	64.7 (±0.8)	0.2 (±0.1)	2.6 (±0.3)	0.1 (±0.1)	0.5 (±0.1)	0.3 (±0.1)	0.2 (±0.1)
5	927,446	715,688	645,425 (±9,351)	19.9 (±0.6)	10.5 (±0.5)	0.4 (±0.1)	0.1(±0.1)	65.1 (±0.5)	0.2 (±0.1)	2.3 (±0.2)	0.1 (±0.1)	0.7 (±0.1)	0.4 (±0.1)	0.3 (±0.1)
17	914,054	685,345	571,070 (±9,022)	22.3 (±0.8)	12.1 (±0.7)	0.5 (±0.2)	0.1(±0.1)	54.5 (±0.7)	0.2 (±0.1)	9.2 (±0.5)	0.1 (±0.1)	0.5 (±0.1)	0.5 (±0.1)	0.2 (±0.1)
18	943,503	706,103	618,805 (±10,099)	25.6 (±0.8)	14.9 (±0.7)	0.4 (±0.1)	0.1(±0.1)	48.6 (±0.6)	0.2 (±0.1)	9.4 (±0.6)	0.0 (±0.1)	0.4 (±0.1)	0.3 (±0.1)	0.1 (±0.1)

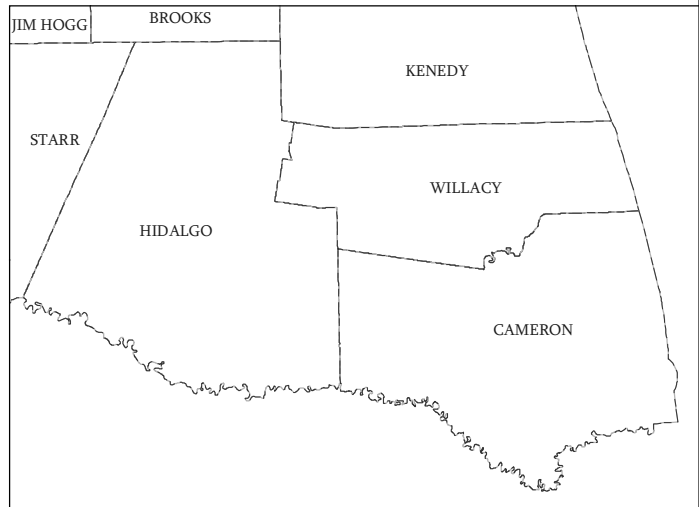
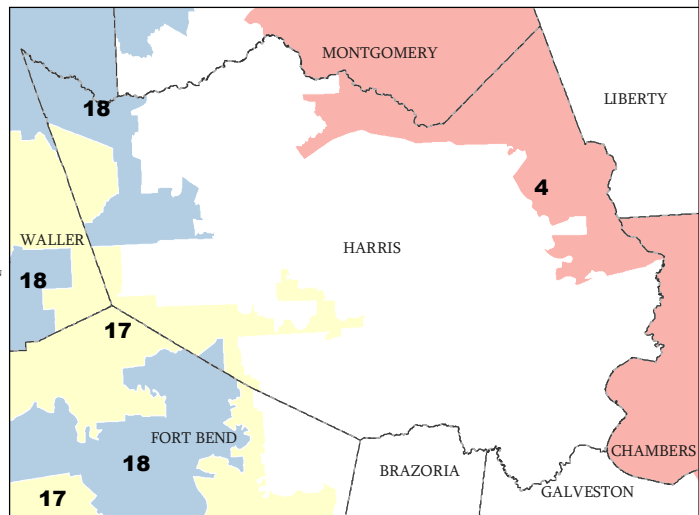
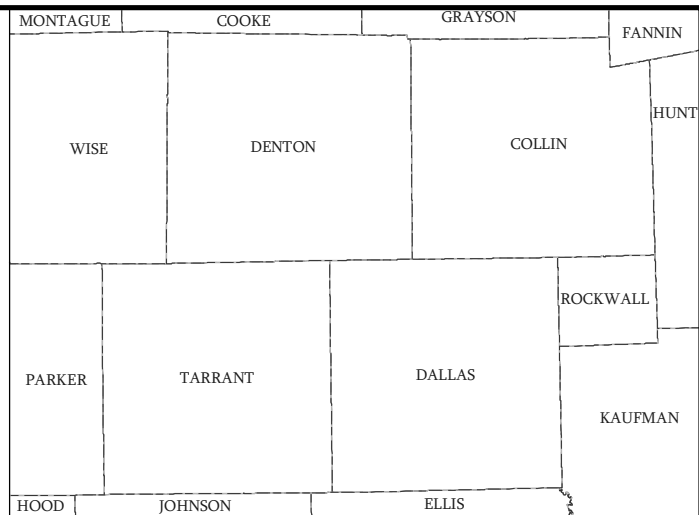
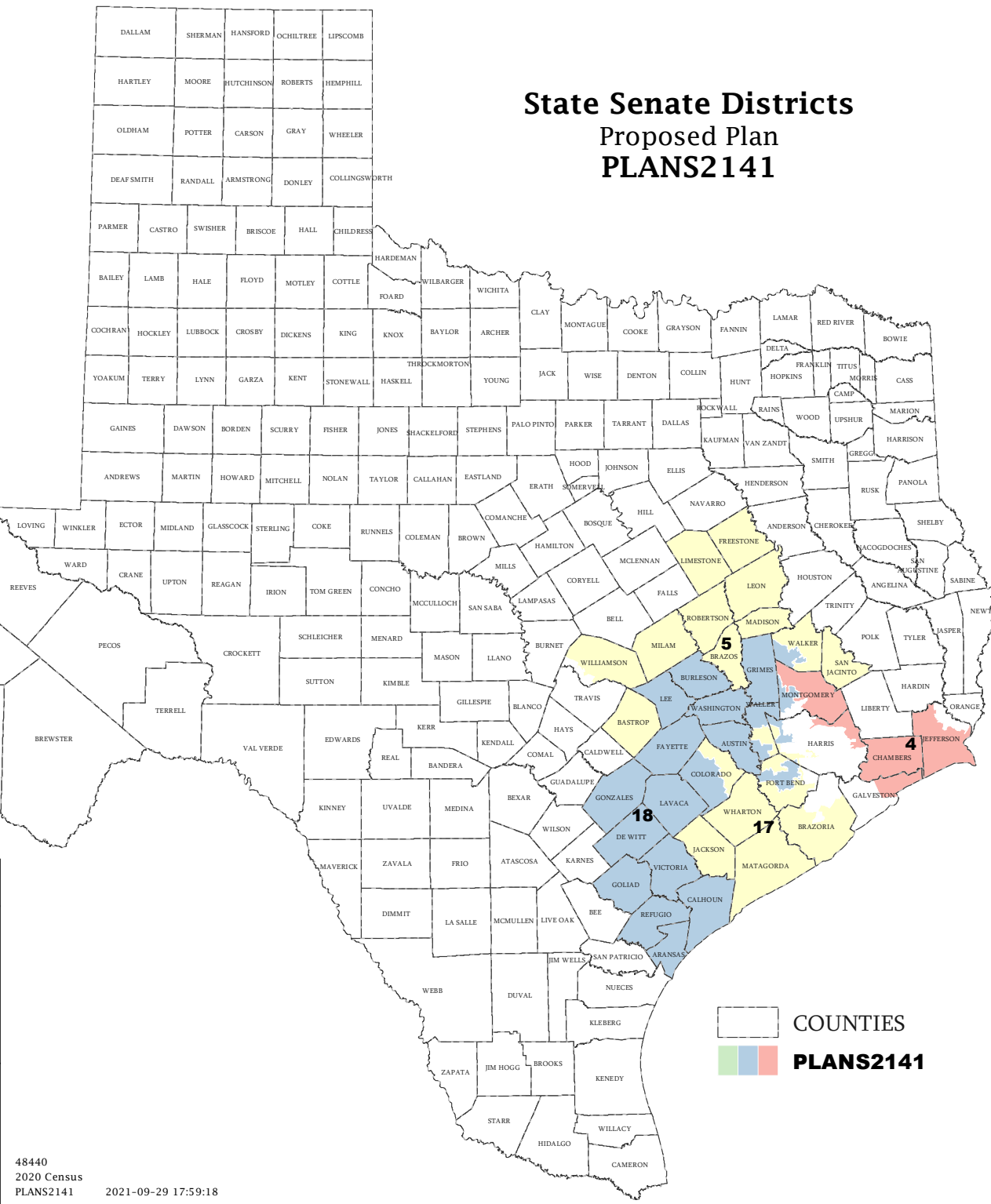
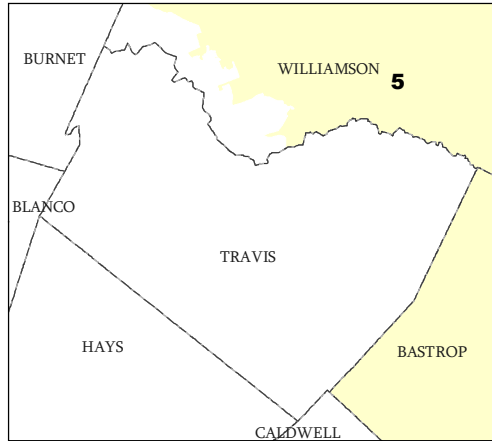
The American Community Survey provided estimated citizen voting age population (CVAP) data at the block group level in a Special Tabulation. Because the MOE can only be calculated using whole block groups, all block groups with more than 50% of the population in a district are included in the analysis. The Red-118 report provides a summary of the block groups used in the analysis.
 The percent for each CVAP population category is that group's CVAP divided by the CVAP total.
 Numbers in parentheses are margins of error at 90% confidence level.

Incumbents by District

SENATE DISTRICTS - PLANS2141

District	Incumbents
4	Creighton - R
5	Schwertner - R
17	Huffman - R
18	Kolkhorst - R

State Senate Districts Proposed Plan PLANS2141

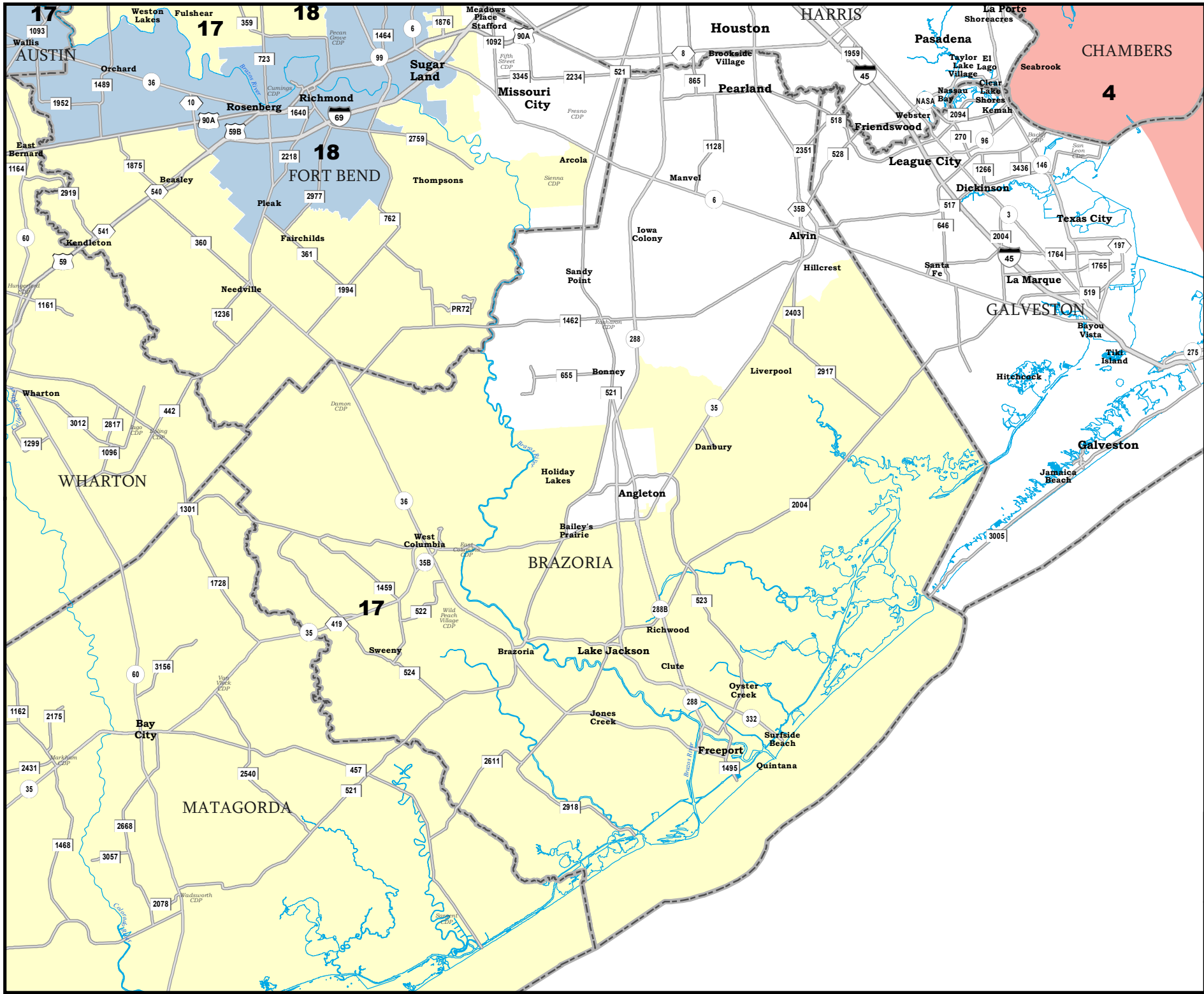


COUNTRIES
 PLANS2141

Map ID 5900
09/29/21 18:01:40



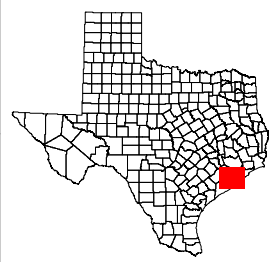
48440
2020 Census
PLANS2141 2021-09-29 17:59:18

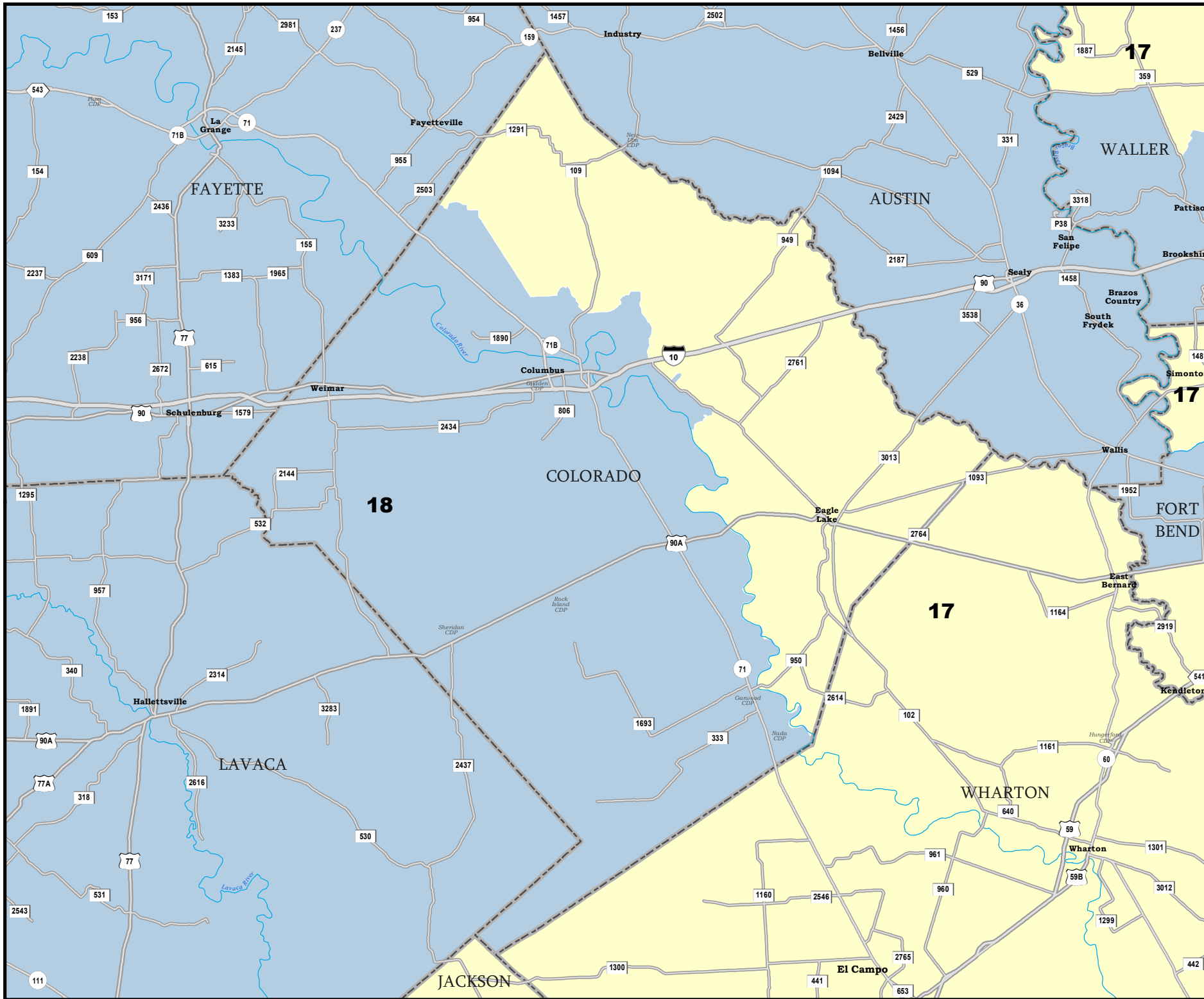


BRAZORIA COUNTY

State Senate Districts
Proposed Plan
PLANS2141

 COUNTIES
 **PLANS2141**



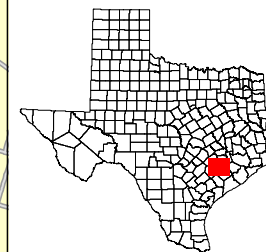


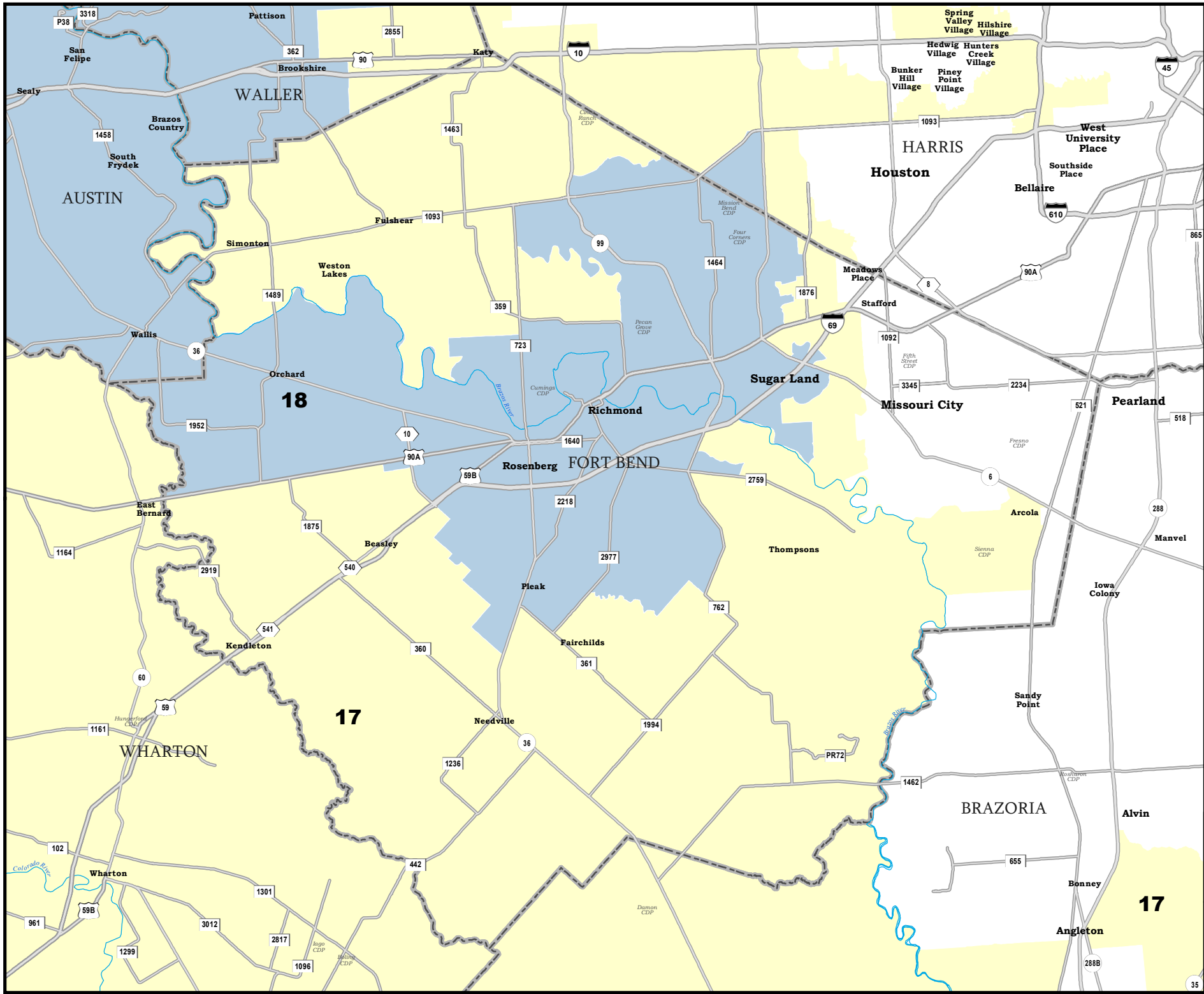
COLORADO COUNTY

State Senate Districts Proposed Plan PLANS2141

 COUNTIES

 **PLANS2141**

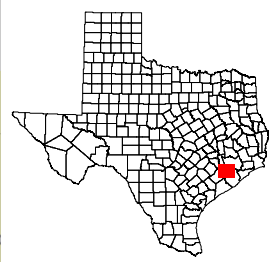




FORT BEND COUNTY

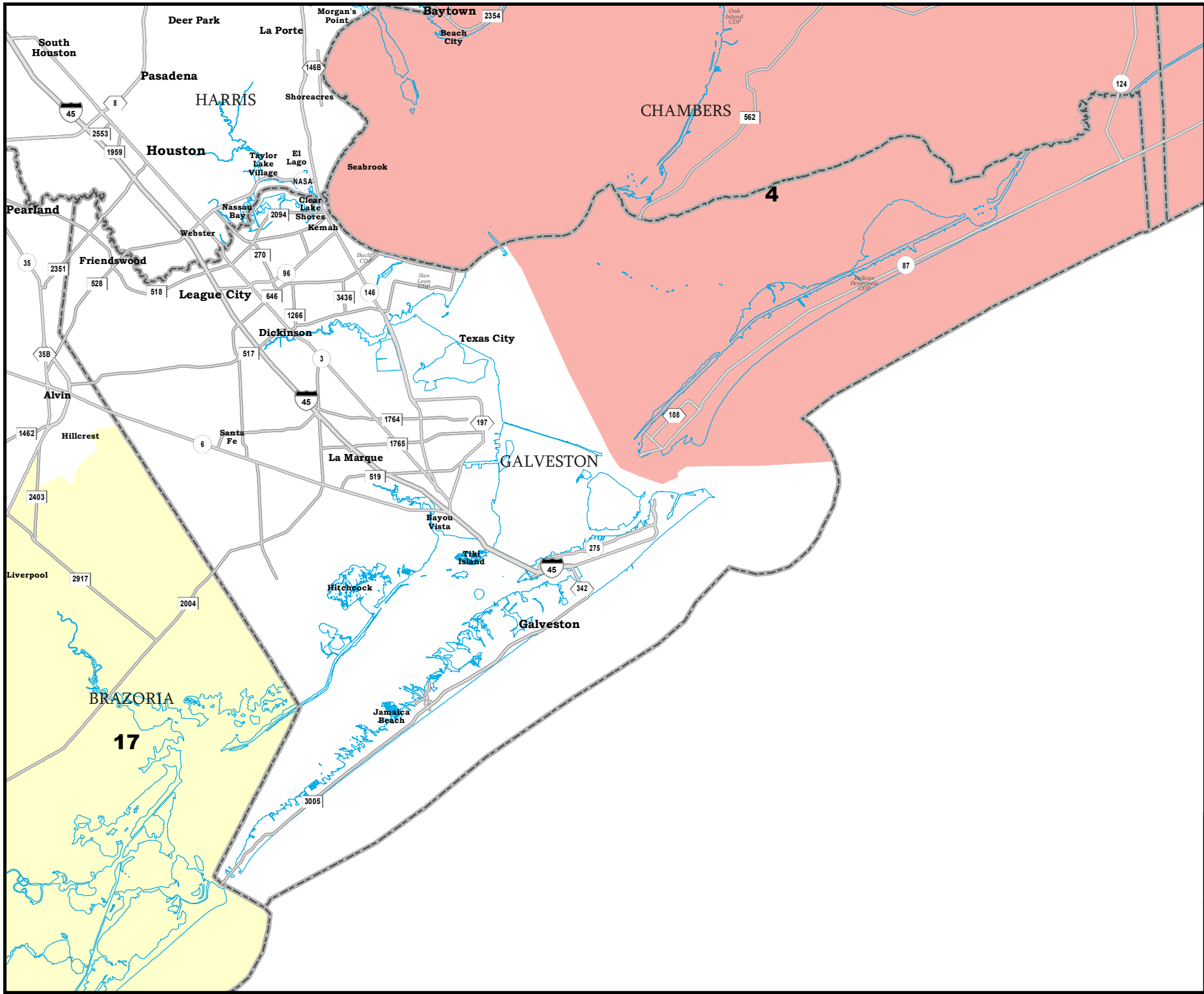
State Senate Districts Proposed Plan PLANS2141

 COUNTIES
 **PLANS2141**



48440
 2020 Census
 PLANS2141 2021-09-29 17:59:18

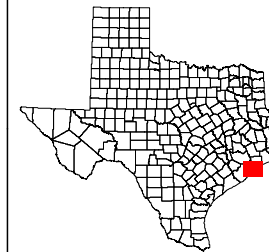
Map ID 5900
 09/29/21 18:01:40

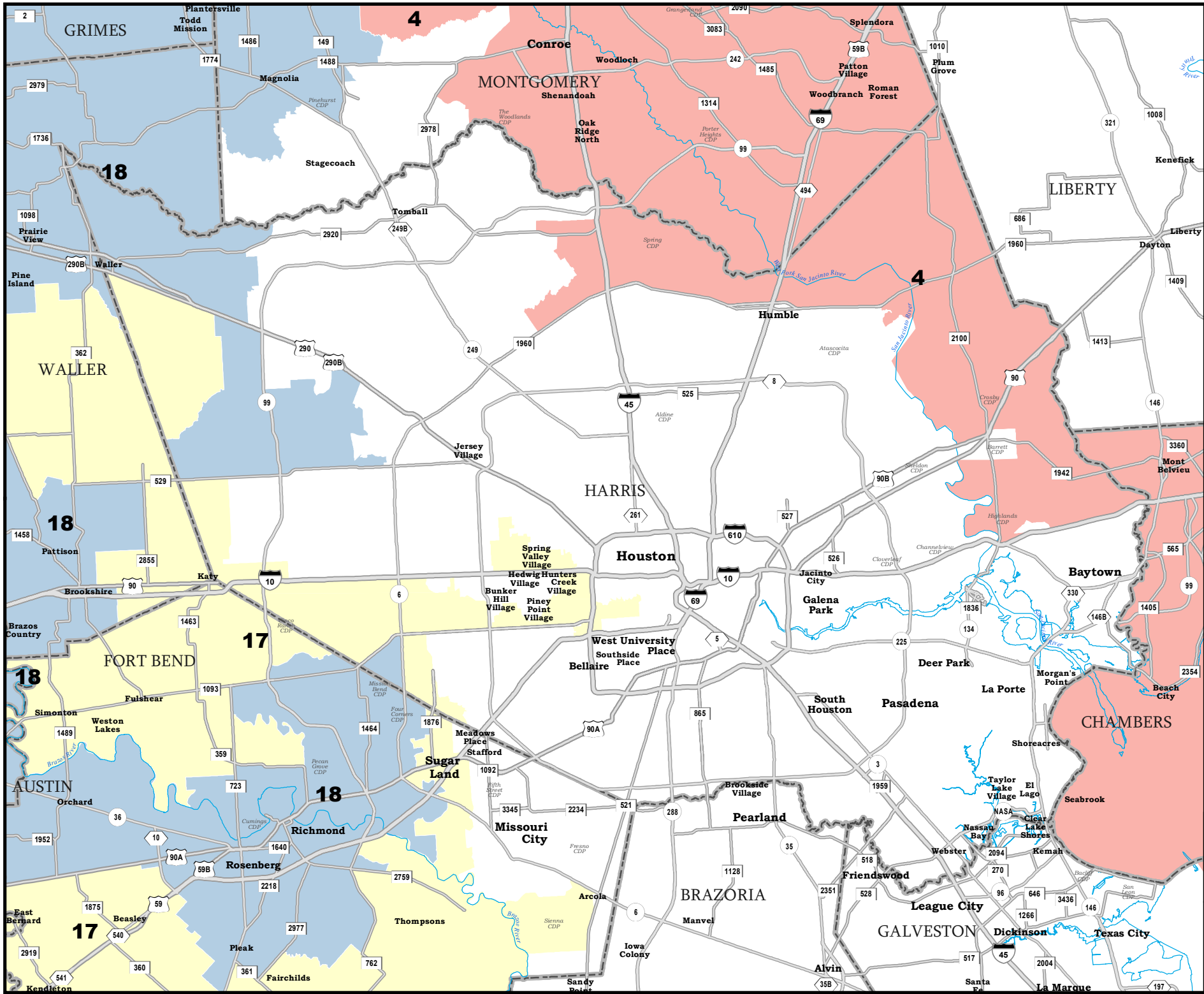



GALVESTON COUNTY

State Senate Districts Proposed Plan PLANS2141

-  COUNTIES
-  **PLANS2141**

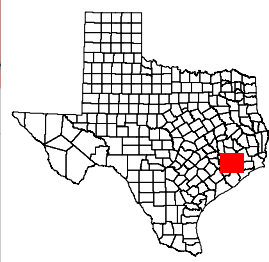




HARRIS COUNTY

State Senate Districts Proposed Plan PLANS2141

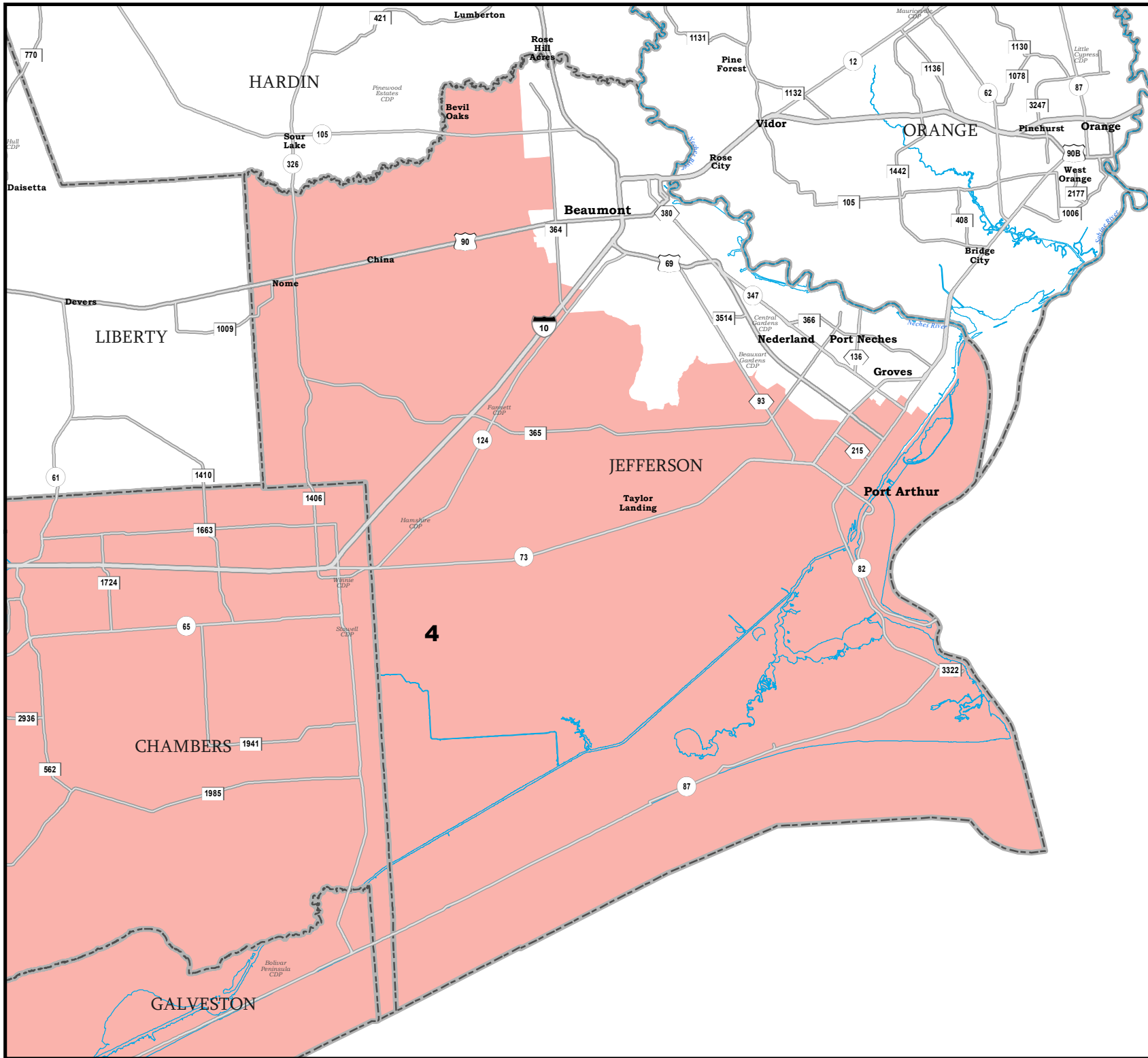
 COUNTIES
 **PLANS2141**



Map ID 5900
09/29/21 18:01:40

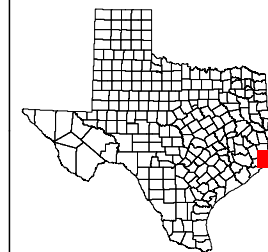


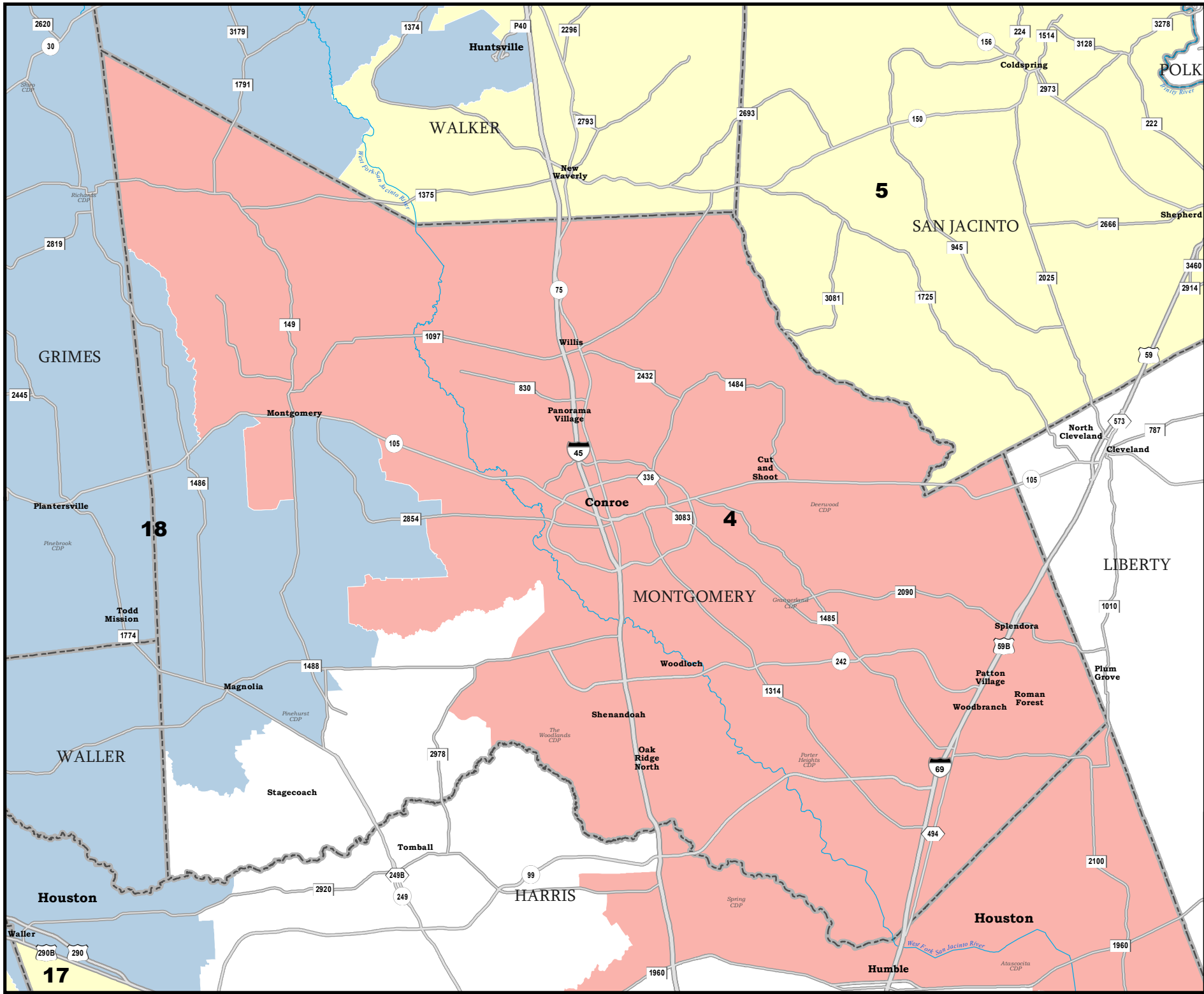
48440
2020 Census
PLANS2141 2021-09-29 17:59:18



JEFFERSON COUNTY

State Senate Districts Proposed Plan PLANS2141



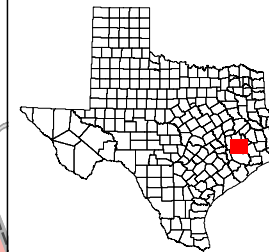


MONTGOMERY COUNTY

State Senate Districts Proposed Plan PLANS2141

 COUNTIES

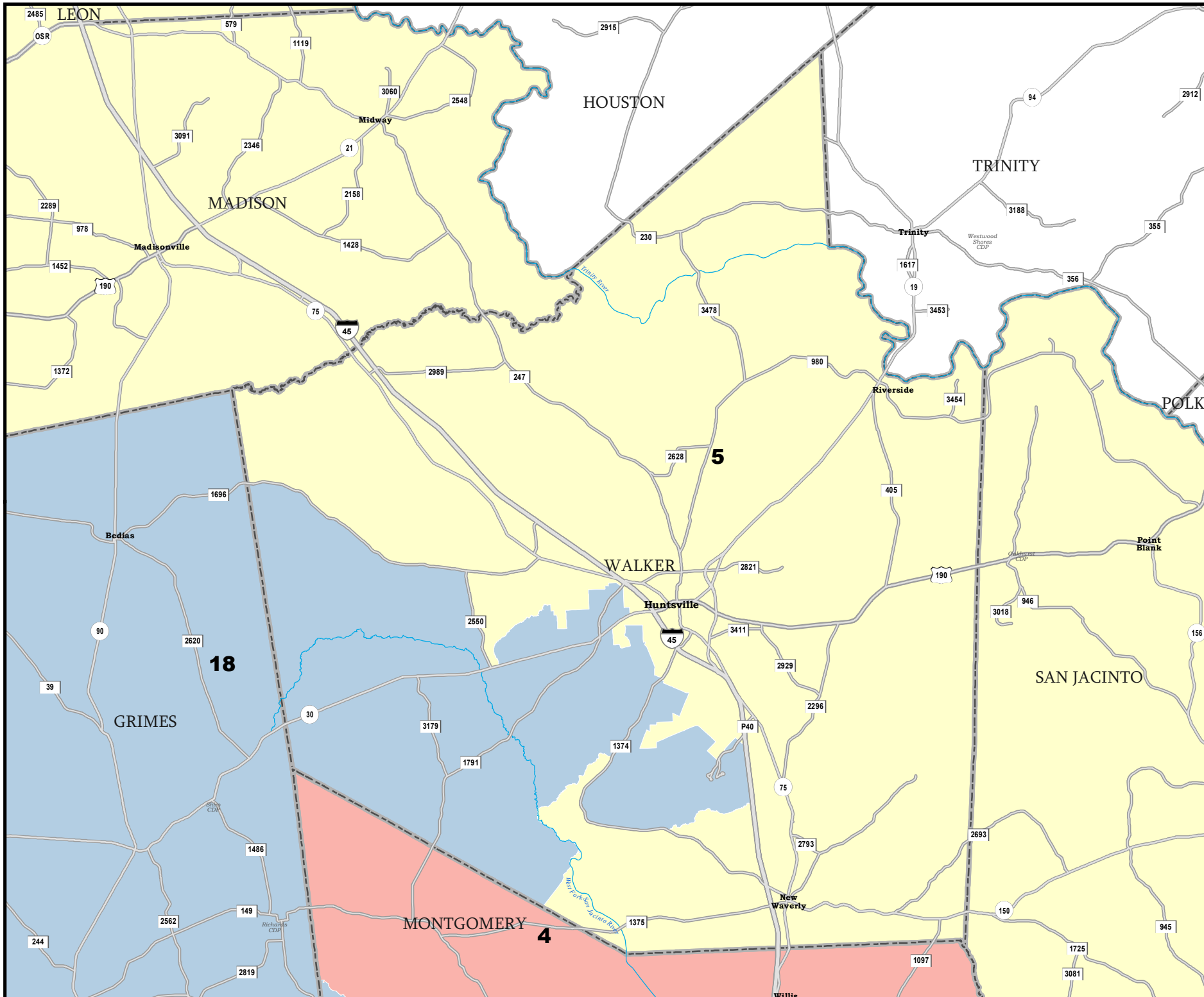
 **PLANS2141**



Map ID 5900
09/29/21 18:01:40



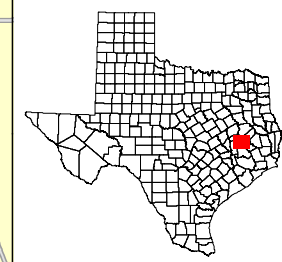
48440
2020 Census
PLANS2141 2021-09-29 17:59:18




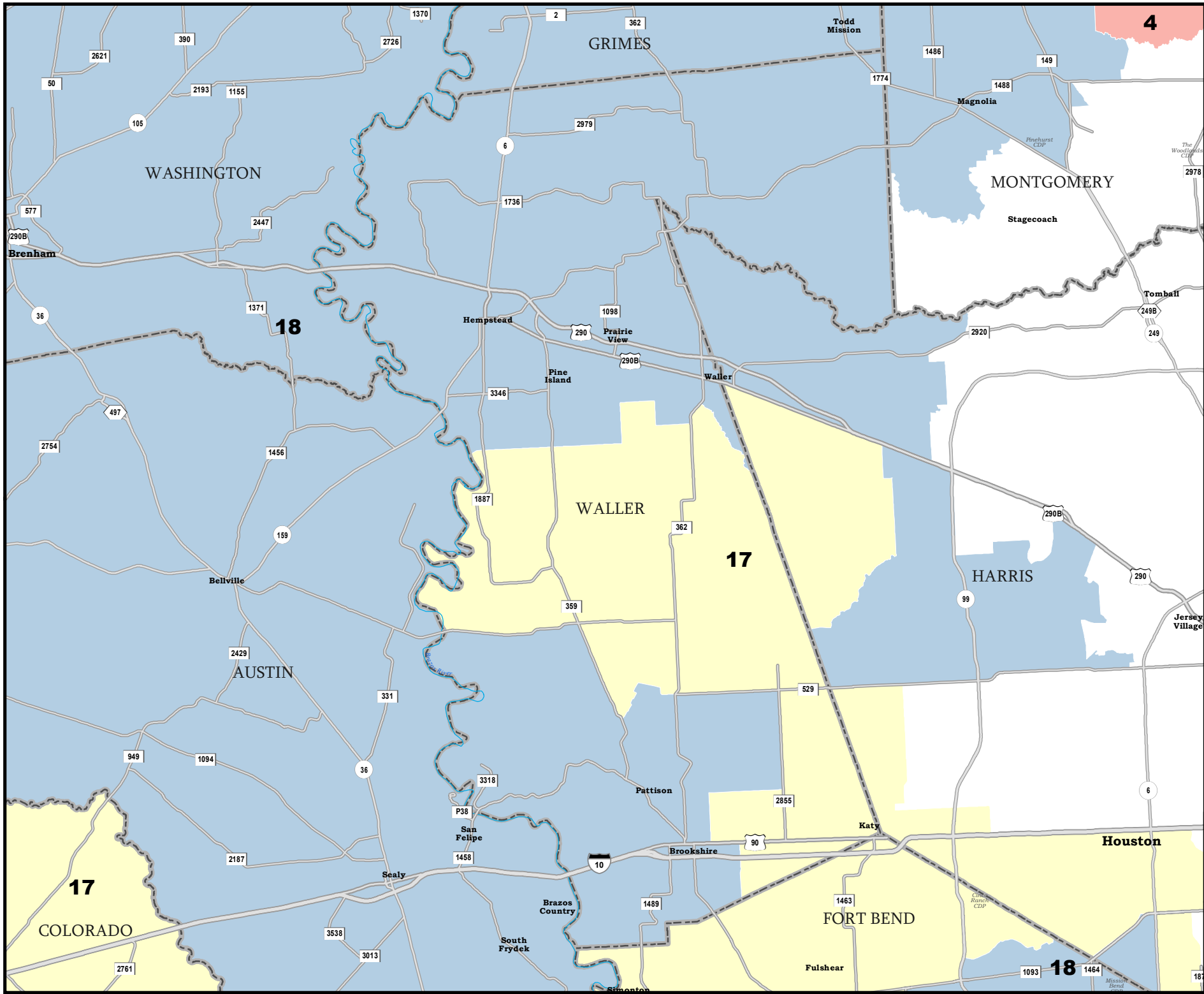
WALKER COUNTY

State Senate Districts Proposed Plan PLANS2141

 COUNTIES
 **PLANS2141**



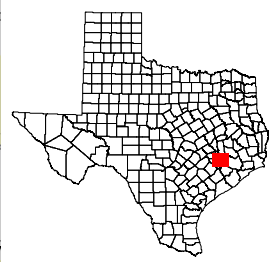
Map ID 5900
 09/29/21 18:01:40
 48440
 2020 Census
 PLANS2141 2021-09-29 17:59:18




WALLER COUNTY

State Senate Districts Proposed Plan PLANS2141

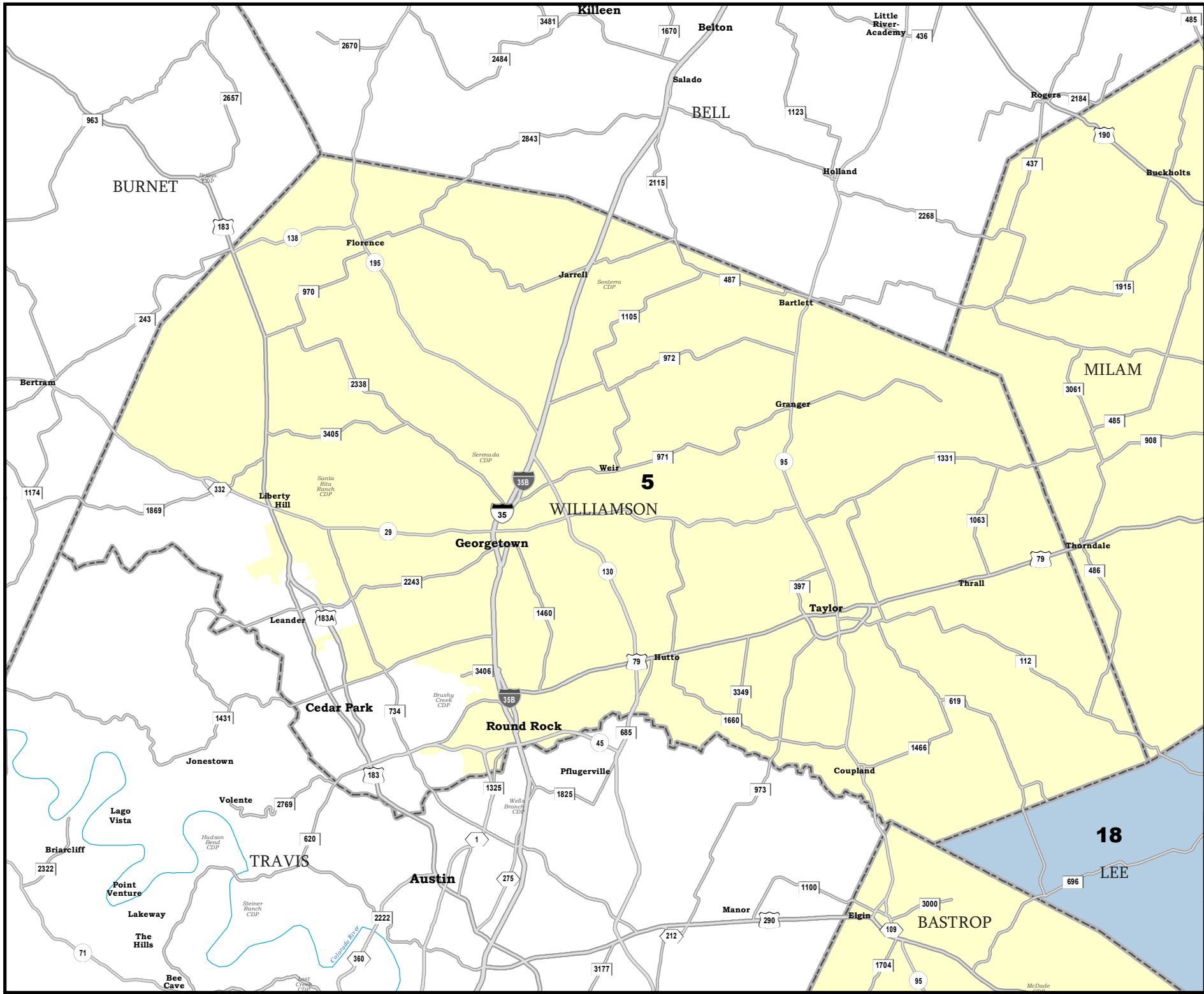
 COUNTIES
 **PLANS2141**



Map ID 5900
09/29/21 18:01:40



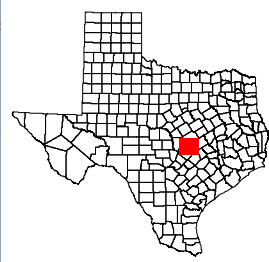
48440
2020 Census
PLANS2141 2021-09-29 17:59:18



WILLIAMSON COUNTY

State Senate Districts Proposed Plan PLANS2141

 COUNTIES
 **PLANS2141**



Map ID 5900
 09/29/21 18:01:40
 48440
 2020 Census
 PLANS2141 2021-09-29 17:59:18
