

District Population Analysis with County Subtotals
HOUSE DISTRICTS - PLANH2163

Total State Population	29,145,505
Total Districts Required	150
Ideal District Population	194,303
Unassigned Population	28,368,644
Districts in Plan	4
Unassigned Geography	Yes
Districts Contiguous	Yes

	Population	-----Deviation-----	
		Total	Percent
Plan Overall Range		8,624	4.44%
Smallest District (126)	190,582	-3,721	-1.92%
Largest District (139)	199,206	4,903	2.52%
Average (mean)	194,215	2,623	1.35%

PLANH2163

District Population Analysis with County Subtotals

HOUSE DISTRICTS - PLANH2163

	Deviation		Total	Anglo	Non-Anglo	Asian	Black	Hispanic	B+H	%Anglo	%Non-Anglo	%Asian	%Black	%Hispanic	%B+H
DISTRICT 126	-3,721	Total:	190,582	85,528	105,054	20,288	33,074	49,987	81,248	44.9	55.1	10.6	17.4	26.2	42.6
	-1.92 %	VAP:	144,420	70,303	74,117	15,162	22,910	34,022	56,081	48.7	51.3	10.5	15.9	23.6	38.8
Harris (4%)			190,582	85,528	105,054	20,288	33,074	49,987	81,248	44.9	55.1	10.6	17.4	26.2	42.6
DISTRICT 130	-1,700	Total:	192,603	105,268	87,335	17,929	20,167	46,304	65,275	54.7	45.3	9.3	10.5	24.0	33.9
	-0.87 %	VAP:	138,299	79,817	58,482	12,172	13,437	30,202	43,123	57.7	42.3	8.8	9.7	21.8	31.2
Harris (4%)			192,603	105,268	87,335	17,929	20,167	46,304	65,275	54.7	45.3	9.3	10.5	24.0	33.9
DISTRICT 139	4,903	Total:	199,206	27,124	172,082	12,872	69,870	89,768	157,471	13.6	86.4	6.5	35.1	45.1	79.0
	2.52 %	VAP:	145,612	22,384	123,228	10,244	51,828	60,893	111,603	15.4	84.6	7.0	35.6	41.8	76.6
Harris (4%)			199,206	27,124	172,082	12,872	69,870	89,768	157,471	13.6	86.4	6.5	35.1	45.1	79.0
DISTRICT 148	167	Total:	194,470	38,386	156,084	17,207	31,157	107,506	136,739	19.7	80.3	8.8	16.0	55.3	70.3
	0.09 %	VAP:	144,597	33,241	111,356	13,672	22,282	74,627	95,889	23.0	77.0	9.5	15.4	51.6	66.3
Harris (4%)			194,470	38,386	156,084	17,207	31,157	107,506	136,739	19.7	80.3	8.8	16.0	55.3	70.3

**Population and Voter Data
 with Voter Registration Comparison
 HOUSE DISTRICTS - PLANH2163**

District	Deviation		Total	Population						General Election	Turnout	Total Voter Registration			Non-Suspense Voter Registration		
				%Anglo	%Non-Anglo	%Asian	%Black	%Hispanic	%B+H			Total	SSVR	TO/VR	Total	SSVR	TO/VR
126	-3,721	Total:	190,582	44.9	55.1	10.6	17.4	26.2	42.6	2020	87,413	121,354	13.7 %	72.0 %	110,938	13.8 %	78.8 %
	-1.92%	VAP:	144,420	48.7	51.3	10.5	15.9	23.6	38.8	2018	66,358	115,022	12.7 %	57.7 %	103,560	12.9 %	64.1 %
130	-1,700	Total:	192,603	54.7	45.3	9.3	10.5	24.0	33.9	2020	89,868	119,217	13.4 %	75.4 %	111,684	13.5 %	80.5 %
	-0.87%	VAP:	138,299	57.7	42.3	8.8	9.7	21.8	31.2	2018	64,229	108,840	12.5 %	59.0 %	100,014	12.7 %	64.2 %
139	4,903	Total:	199,206	13.6	86.4	6.5	35.1	45.1	79.0	2020	65,162	104,177	21.4 %	62.5 %	96,697	21.8 %	67.4 %
	2.52%	VAP:	145,612	15.4	84.6	7.0	35.6	41.8	76.6	2018	49,103	100,896	20.1 %	48.7 %	92,158	20.5 %	53.3 %
148	167	Total:	194,470	19.7	80.3	8.8	16.0	55.3	70.3	2020	57,445	90,747	31.9 %	63.3 %	83,695	32.4 %	68.6 %
	0.09%	VAP:	144,597	23.0	77.0	9.5	15.4	51.6	66.3	2018	41,823	85,915	31.1 %	48.7 %	77,829	31.9 %	53.7 %

For technical reasons, election results in Texas Legislative Council reports may vary slightly from the official election results. Complete official results for all elections are maintained by the Office of the Texas Secretary of State.
 SSVR = Spanish surname voter registration

Plan Fit Verification
HOUSE DISTRICTS
PLANH2163 Compared with PLANH2101

The amendment fits into the base plan.

**American Community Survey Special Tabulation
 Using Census and American Community Survey Data
 HOUSE DISTRICTS - PLANH2163**

Special Tabulation of Citizen Voting Age Population (CVAP) from the 2017-2021 American Community Survey with Margins of Error														
2020 Census			Hispanic CVAP	Not Hispanic or Latino Citizen Voting Age Population (CVAP)										
District	Total	VAP		CVAP	% Hispanic	% Black Alone	% Black + White	% Black + American Indian	% White Alone	% American Indian Alone	% Asian Alone	% Native Hawaiian Alone	% American Indian + White	% Asian + White
126	190,582	144,420	130,090 (±5,075)	20.3 (±2.1)	15.6 (±1.7)	0.5 (±0.3)	0.2(±0.2)	53.8 (±1.4)	0.1 (±0.1)	8.1 (±1.2)	0.1 (±0.2)	0.3 (±0.2)	0.5 (±0.3)	0.3 (±0.2)
130	192,603	138,299	117,590 (±4,723)	18.6 (±1.6)	10.0 (±1.8)	0.1 (±0.2)	0.0(±0.1)	63.7 (±1.7)	0.1 (±0.1)	6.1 (±0.9)	0.0 (±0.1)	0.4 (±0.2)	0.7 (±0.4)	0.2 (±0.2)
139	199,206	145,612	123,125 (±4,860)	30.6 (±2.1)	42.0 (±2.4)	0.4 (±0.2)	0.4(±0.2)	18.6 (±0.8)	0.1 (±0.2)	7.0 (±1.2)	0.1 (±0.1)	0.2 (±0.1)	0.3 (±0.2)	0.3 (±0.2)
148	194,470	144,597	107,945 (±4,257)	39.7 (±2.1)	19.3 (±2.2)	0.2 (±0.2)	0.0(±0.1)	30.4 (±1.4)	0.2 (±0.2)	9.5 (±1.3)	0.1 (±0.2)	0.2 (±0.2)	0.1 (±0.2)	0.2 (±0.2)

The American Community Survey provided estimated citizen voting age population (CVAP) data at the block group level in a Special Tabulation. Because the MOE can only be calculated using whole block groups, all block groups with more than 50% of the population in a district are included in the analysis. The Red-118 report provides a summary of the block groups used in the analysis.

The percent for each CVAP population category is that group's CVAP divided by the CVAP total.

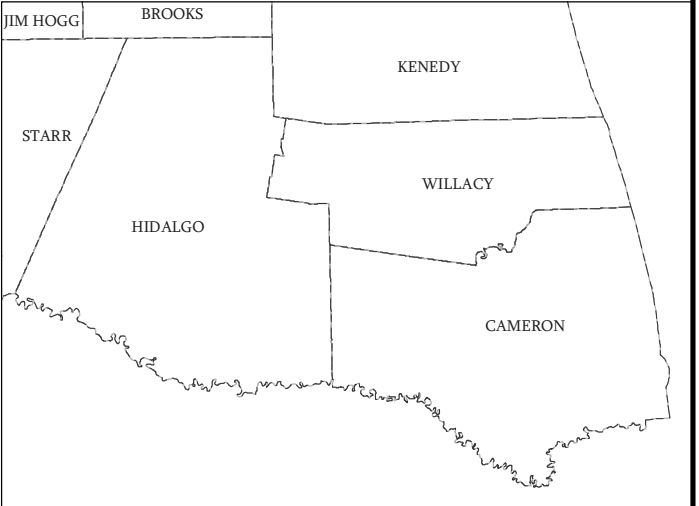
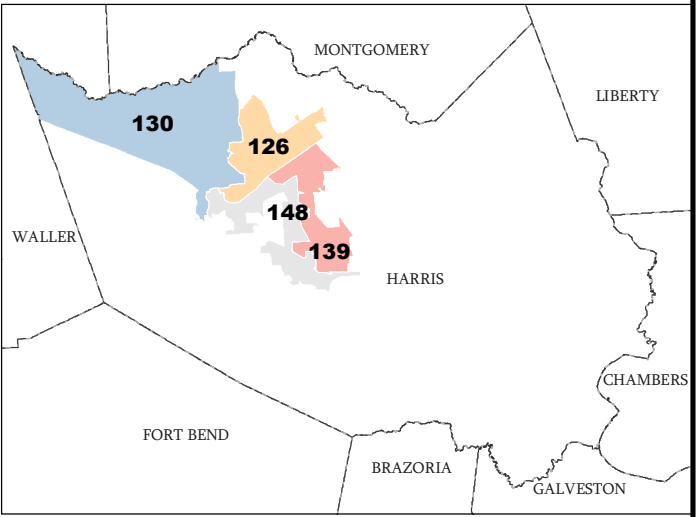
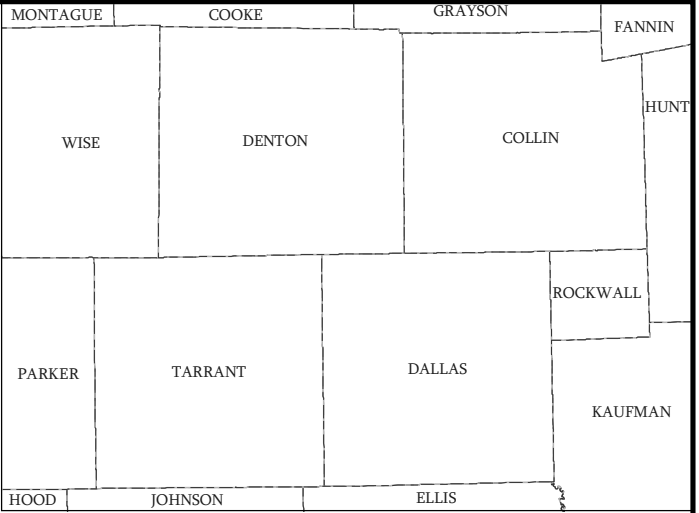
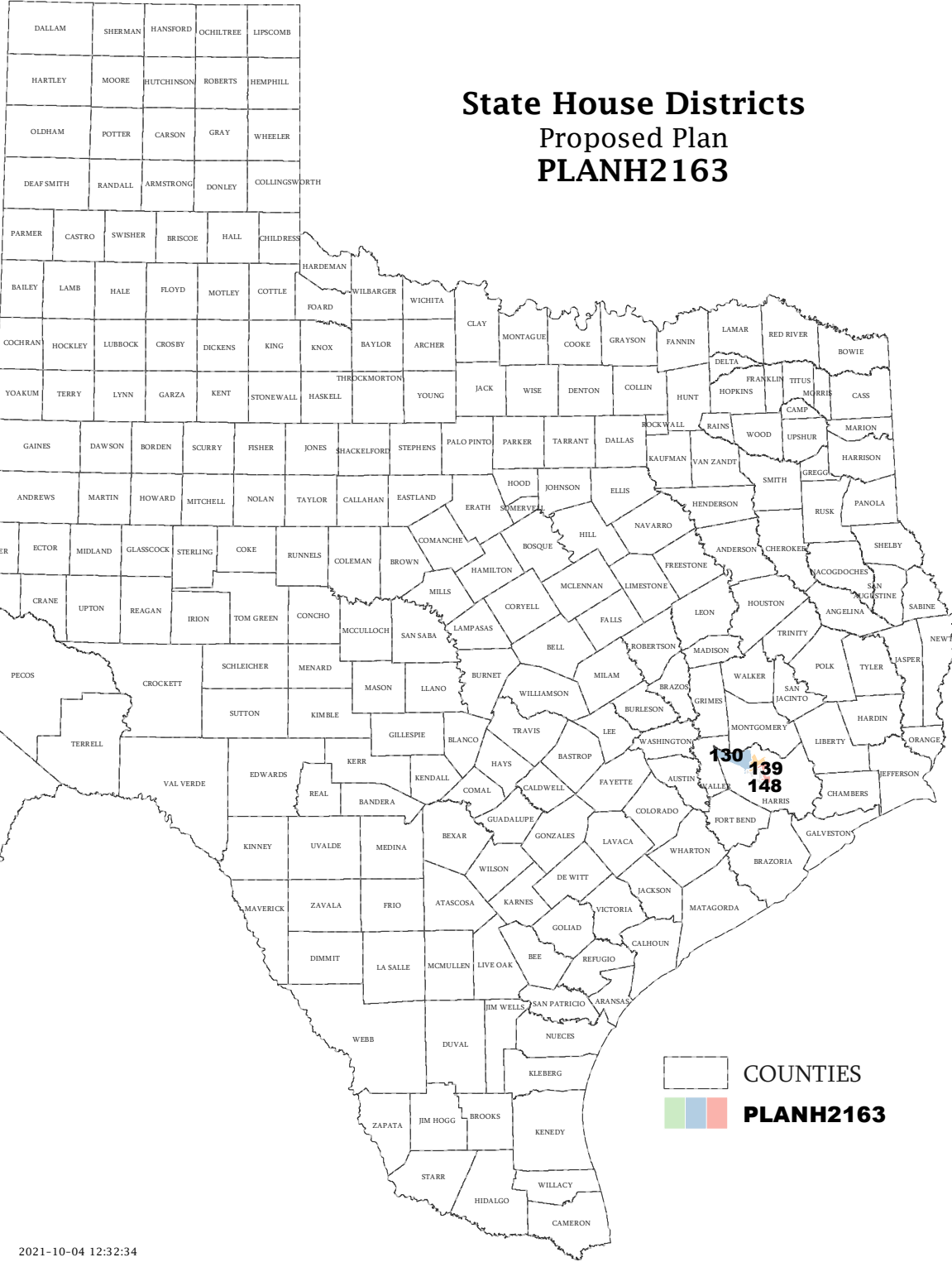
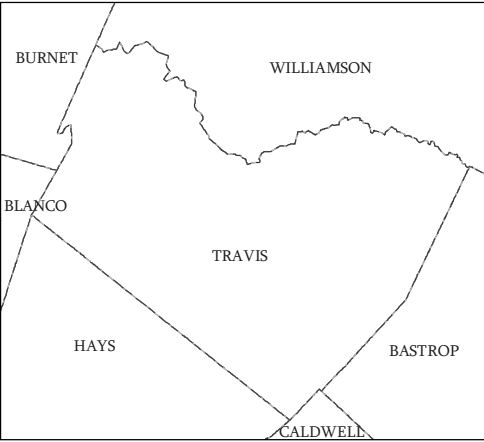
Numbers in parentheses are margins of error at 90% confidence level.

Incumbents by District

HOUSE DISTRICTS - PLANH2163

District	Incumbents
126	Harless - R
130	Oliverson - R
139	Ja. Johnson - D
148	Morales Shaw - D

State House Districts Proposed Plan PLANH2163

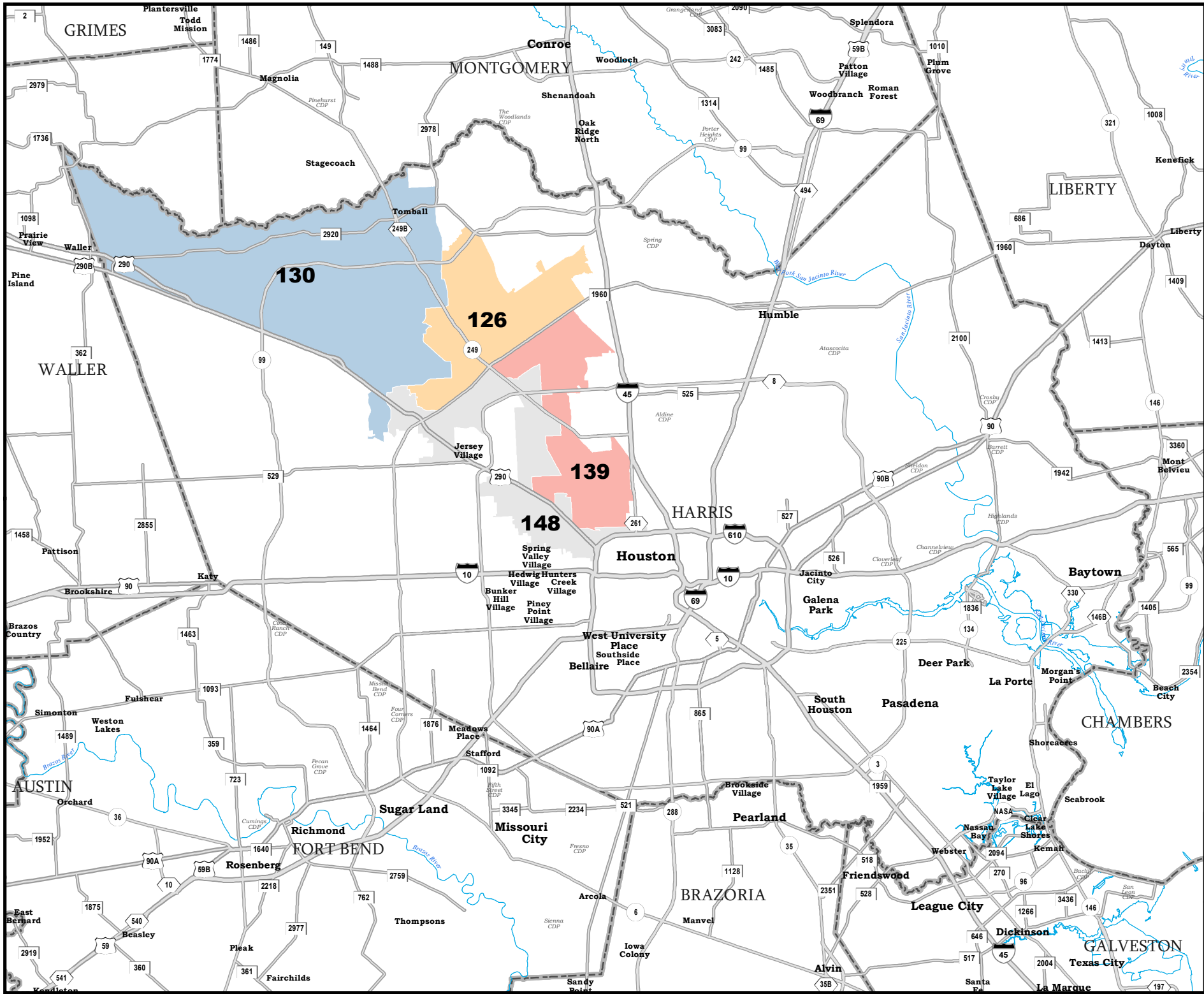


COUNTIES
PLANH2163

Map ID 5900
10/04/21 12:36:41



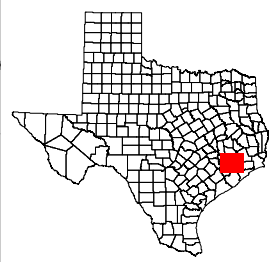
48910
2020 Census
PLANH2163 2021-10-04 12:32:34



HARRIS COUNTY

State House Districts Proposed Plan PLANH2163

 COUNTIES
 **PLANH2163**



Map ID 5900
10/04/21 12:36:41



48910
2020 Census
PLANH2163 2021-10-04 12:32:34