

District Population Analysis with County Subtotals
HOUSE DISTRICTS - PLANH2142

| | |
|---------------------------|------------|
| Total State Population | 29,145,505 |
| Total Districts Required | 150 |
| Ideal District Population | 194,303 |
| Unassigned Population | 26,793,076 |
| Districts in Plan | 12 |
| Unassigned Geography | Yes |
| Districts Contiguous | Yes |

| | Population | -----Deviation----- | |
|-------------------------|-------------------|----------------------------|----------------|
| | | Total | Percent |
| Plan Overall Range | | 16,667 | 8.58% |
| Smallest District (140) | 186,188 | -8,115 | -4.18% |
| Largest District (144) | 202,855 | 8,552 | 4.40% |
| Average (mean) | 196,036 | 5,388 | 2.77% |

PLANH2142

District Population Analysis with County Subtotals

HOUSE DISTRICTS - PLANH2142

| | Deviation | | Total | Anglo | Non-Anglo | Asian | Black | Hispanic | B+H | %Anglo | %Non-Anglo | %Asian | %Black | %Hispanic | %B+H |
|---------------------|-----------|--------|---------|--------|-----------|--------|--------|----------|---------|--------|------------|--------|--------|-----------|------|
| DISTRICT 126 | 1,937 | Total: | 196,240 | 86,207 | 110,033 | 20,585 | 35,152 | 52,577 | 85,835 | 43.9 | 56.1 | 10.5 | 17.9 | 26.8 | 43.7 |
| | 1.00 % | VAP: | 148,543 | 71,011 | 77,532 | 15,404 | 24,202 | 35,832 | 59,150 | 47.8 | 52.2 | 10.4 | 16.3 | 24.1 | 39.8 |
| Harris (4%) | | | 196,240 | 86,207 | 110,033 | 20,585 | 35,152 | 52,577 | 85,835 | 43.9 | 56.1 | 10.5 | 17.9 | 26.8 | 43.7 |
| DISTRICT 131 | 7,156 | Total: | 201,459 | 10,615 | 190,844 | 14,653 | 74,201 | 103,509 | 174,730 | 5.3 | 94.7 | 7.3 | 36.8 | 51.4 | 86.7 |
| | 3.68 % | VAP: | 145,836 | 9,174 | 136,662 | 11,971 | 54,935 | 70,357 | 123,581 | 6.3 | 93.7 | 8.2 | 37.7 | 48.2 | 84.7 |
| Harris (4%) | | | 201,459 | 10,615 | 190,844 | 14,653 | 74,201 | 103,509 | 174,730 | 5.3 | 94.7 | 7.3 | 36.8 | 51.4 | 86.7 |
| DISTRICT 137 | -5,525 | Total: | 188,778 | 26,079 | 162,699 | 23,611 | 38,226 | 101,783 | 137,368 | 13.8 | 86.2 | 12.5 | 20.2 | 53.9 | 72.8 |
| | -2.84 % | VAP: | 141,152 | 22,212 | 118,940 | 18,153 | 28,936 | 72,336 | 99,489 | 15.7 | 84.3 | 12.9 | 20.5 | 51.2 | 70.5 |
| Harris (4%) | | | 188,778 | 26,079 | 162,699 | 23,611 | 38,226 | 101,783 | 137,368 | 13.8 | 86.2 | 12.5 | 20.2 | 53.9 | 72.8 |
| DISTRICT 139 | 7,727 | Total: | 202,030 | 23,097 | 178,933 | 12,415 | 73,468 | 93,647 | 164,916 | 11.4 | 88.6 | 6.1 | 36.4 | 46.4 | 81.6 |
| | 3.98 % | VAP: | 148,302 | 19,575 | 128,727 | 10,023 | 54,938 | 63,628 | 117,411 | 13.2 | 86.8 | 6.8 | 37.0 | 42.9 | 79.2 |
| Harris (4%) | | | 202,030 | 23,097 | 178,933 | 12,415 | 73,468 | 93,647 | 164,916 | 11.4 | 88.6 | 6.1 | 36.4 | 46.4 | 81.6 |
| DISTRICT 140 | -8,115 | Total: | 186,188 | 10,455 | 175,733 | 4,046 | 19,015 | 153,383 | 170,947 | 5.6 | 94.4 | 2.2 | 10.2 | 82.4 | 91.8 |
| | -4.18 % | VAP: | 130,011 | 8,975 | 121,036 | 3,182 | 13,758 | 104,227 | 117,283 | 6.9 | 93.1 | 2.4 | 10.6 | 80.2 | 90.2 |
| Harris (4%) | | | 186,188 | 10,455 | 175,733 | 4,046 | 19,015 | 153,383 | 170,947 | 5.6 | 94.4 | 2.2 | 10.2 | 82.4 | 91.8 |
| DISTRICT 143 | 6,207 | Total: | 200,510 | 20,300 | 180,210 | 2,524 | 26,374 | 152,057 | 176,408 | 10.1 | 89.9 | 1.3 | 13.2 | 75.8 | 88.0 |
| | 3.19 % | VAP: | 143,832 | 17,244 | 126,588 | 1,937 | 19,227 | 105,347 | 123,530 | 12.0 | 88.0 | 1.3 | 13.4 | 73.2 | 85.9 |
| Harris (4%) | | | 200,510 | 20,300 | 180,210 | 2,524 | 26,374 | 152,057 | 176,408 | 10.1 | 89.9 | 1.3 | 13.2 | 75.8 | 88.0 |
| DISTRICT 144 | 8,552 | Total: | 202,855 | 27,300 | 175,555 | 6,395 | 14,743 | 154,681 | 167,663 | 13.5 | 86.5 | 3.2 | 7.3 | 76.3 | 82.7 |
| | 4.40 % | VAP: | 145,280 | 23,507 | 121,773 | 4,870 | 9,891 | 106,630 | 115,642 | 16.2 | 83.8 | 3.4 | 6.8 | 73.4 | 79.6 |
| Harris (4%) | | | 202,855 | 27,300 | 175,555 | 6,395 | 14,743 | 154,681 | 167,663 | 13.5 | 86.5 | 3.2 | 7.3 | 76.3 | 82.7 |
| DISTRICT 145 | -7,473 | Total: | 186,830 | 40,714 | 146,116 | 6,242 | 17,938 | 121,450 | 138,027 | 21.8 | 78.2 | 3.3 | 9.6 | 65.0 | 73.9 |
| | -3.85 % | VAP: | 144,250 | 35,321 | 108,929 | 4,800 | 13,401 | 89,815 | 102,479 | 24.5 | 75.5 | 3.3 | 9.3 | 62.3 | 71.0 |
| Harris (4%) | | | 186,830 | 40,714 | 146,116 | 6,242 | 17,938 | 121,450 | 138,027 | 21.8 | 78.2 | 3.3 | 9.6 | 65.0 | 73.9 |
| DISTRICT 146 | -818 | Total: | 193,485 | 31,603 | 161,882 | 16,394 | 84,377 | 61,783 | 143,593 | 16.3 | 83.7 | 8.5 | 43.6 | 31.9 | 74.2 |
| | -0.42 % | VAP: | 146,500 | 26,877 | 119,623 | 13,776 | 63,975 | 41,978 | 104,413 | 18.3 | 81.7 | 9.4 | 43.7 | 28.7 | 71.3 |
| Harris (4%) | | | 193,485 | 31,603 | 161,882 | 16,394 | 84,377 | 61,783 | 143,593 | 16.3 | 83.7 | 8.5 | 43.6 | 31.9 | 74.2 |
| DISTRICT 147 | 2,038 | Total: | 196,341 | 42,497 | 153,844 | 17,934 | 65,146 | 71,244 | 134,052 | 21.6 | 78.4 | 9.1 | 33.2 | 36.3 | 68.3 |
| | 1.05 % | VAP: | 159,261 | 39,985 | 119,276 | 15,855 | 51,559 | 51,629 | 101,825 | 25.1 | 74.9 | 10.0 | 32.4 | 32.4 | 63.9 |
| Harris (4%) | | | 196,341 | 42,497 | 153,844 | 17,934 | 65,146 | 71,244 | 134,052 | 21.6 | 78.4 | 9.1 | 33.2 | 36.3 | 68.3 |
| DISTRICT 148 | 5,535 | Total: | 199,838 | 42,745 | 157,093 | 17,318 | 31,152 | 108,334 | 137,535 | 21.4 | 78.6 | 8.7 | 15.6 | 54.2 | 68.8 |
| | 2.85 % | VAP: | 148,598 | 36,435 | 112,163 | 13,653 | 22,406 | 75,280 | 96,647 | 24.5 | 75.5 | 9.2 | 15.1 | 50.7 | 65.0 |
| Harris (4%) | | | 199,838 | 42,745 | 157,093 | 17,318 | 31,152 | 108,334 | 137,535 | 21.4 | 78.6 | 8.7 | 15.6 | 54.2 | 68.8 |

District Population Analysis with County Subtotals

HOUSE DISTRICTS - PLANH2142

| | Deviation | | Total | Anglo | Non-Anglo | Asian | Black | Hispanic | B+H | %Anglo | %Non-Anglo | %Asian | %Black | %Hispanic | %B+H |
|---------------------|-----------|--------|---------|--------|-----------|--------|--------|----------|---------|--------|------------|--------|--------|-----------|------|
| DISTRICT 149 | 3,572 | Total: | 197,875 | 27,472 | 170,403 | 39,008 | 52,750 | 79,122 | 129,382 | 13.9 | 86.1 | 19.7 | 26.7 | 40.0 | 65.4 |
| | 1.84 % | VAP: | 148,568 | 22,897 | 125,671 | 31,756 | 36,983 | 56,743 | 92,240 | 15.4 | 84.6 | 21.4 | 24.9 | 38.2 | 62.1 |
| Harris (4%) | | | 197,875 | 27,472 | 170,403 | 39,008 | 52,750 | 79,122 | 129,382 | 13.9 | 86.1 | 19.7 | 26.7 | 40.0 | 65.4 |

**Population and Voter Data
 with Voter Registration Comparison
 HOUSE DISTRICTS - PLANH2142**

| District | Deviation | | Population | | | | | | | Total Voter Registration | | | Non-Suspense Voter Registration | | | | |
|----------|-----------|--------|------------|--------|------------|--------|--------|-----------|------|--------------------------|---------|---------|---------------------------------|--------|---------|--------|--------|
| | | | Total | %Anglo | %Non-Anglo | %Asian | %Black | %Hispanic | %B+H | General Election | Turnout | Total | SSVR | TO/VR | Total | SSVR | TO/VR |
| 126 | 1,937 | Total: | 196,240 | 43.9 | 56.1 | 10.5 | 17.9 | 26.8 | 43.7 | 2020 | 88,619 | 124,124 | 14.1 % | 71.4 % | 113,351 | 14.3 % | 78.2 % |
| | 1.00% | VAP: | 148,543 | 47.8 | 52.2 | 10.4 | 16.3 | 24.1 | 39.8 | 2018 | 67,199 | 117,719 | 13.2 % | 57.1 % | 105,917 | 13.4 % | 63.4 % |
| 131 | 7,156 | Total: | 201,459 | 5.3 | 94.7 | 7.3 | 36.8 | 51.4 | 86.7 | 2020 | 55,112 | 90,470 | 26.0 % | 60.9 % | 84,073 | 26.8 % | 65.6 % |
| | 3.68% | VAP: | 145,836 | 6.3 | 93.7 | 8.2 | 37.7 | 48.2 | 84.7 | 2018 | 40,593 | 86,992 | 24.6 % | 46.7 % | 79,192 | 25.6 % | 51.3 % |
| 137 | -5,525 | Total: | 188,778 | 13.8 | 86.2 | 12.5 | 20.2 | 53.9 | 72.8 | 2020 | 35,688 | 60,469 | 22.4 % | 59.0 % | 54,092 | 22.6 % | 66.0 % |
| | -2.84% | VAP: | 141,152 | 15.7 | 84.3 | 12.9 | 20.5 | 51.2 | 70.5 | 2018 | 26,507 | 58,622 | 21.9 % | 45.2 % | 50,845 | 22.6 % | 52.1 % |
| 139 | 7,727 | Total: | 202,030 | 11.4 | 88.6 | 6.1 | 36.4 | 46.4 | 81.6 | 2020 | 64,707 | 105,346 | 21.7 % | 61.4 % | 97,642 | 22.1 % | 66.3 % |
| | 3.98% | VAP: | 148,302 | 13.2 | 86.8 | 6.8 | 37.0 | 42.9 | 79.2 | 2018 | 48,202 | 101,845 | 20.2 % | 47.3 % | 93,030 | 20.7 % | 51.8 % |
| 140 | -8,115 | Total: | 186,188 | 5.6 | 94.4 | 2.2 | 10.2 | 82.4 | 91.8 | 2020 | 35,202 | 69,905 | 62.4 % | 50.4 % | 66,421 | 63.4 % | 53.0 % |
| | -4.18% | VAP: | 130,011 | 6.9 | 93.1 | 2.4 | 10.6 | 80.2 | 90.2 | 2018 | 25,200 | 66,390 | 61.4 % | 38.0 % | 62,187 | 62.6 % | 40.5 % |
| 143 | 6,207 | Total: | 200,510 | 10.1 | 89.9 | 1.3 | 13.2 | 75.8 | 88.0 | 2020 | 44,346 | 83,259 | 57.3 % | 53.3 % | 77,396 | 58.6 % | 57.3 % |
| | 3.19% | VAP: | 143,832 | 12.0 | 88.0 | 1.3 | 13.4 | 73.2 | 85.9 | 2018 | 32,637 | 80,013 | 56.3 % | 40.8 % | 73,815 | 57.8 % | 44.2 % |
| 144 | 8,552 | Total: | 202,855 | 13.5 | 86.5 | 3.2 | 7.3 | 76.3 | 82.7 | 2020 | 46,151 | 84,484 | 58.2 % | 54.6 % | 77,981 | 59.4 % | 59.2 % |
| | 4.40% | VAP: | 145,280 | 16.2 | 83.8 | 3.4 | 6.8 | 73.4 | 79.6 | 2018 | 33,821 | 80,975 | 56.6 % | 41.8 % | 73,537 | 57.9 % | 46.0 % |
| 145 | -7,473 | Total: | 186,830 | 21.8 | 78.2 | 3.3 | 9.6 | 65.0 | 73.9 | 2020 | 62,294 | 99,333 | 46.9 % | 62.7 % | 92,223 | 48.0 % | 67.5 % |
| | -3.85% | VAP: | 144,250 | 24.5 | 75.5 | 3.3 | 9.3 | 62.3 | 71.0 | 2018 | 48,239 | 93,721 | 48.2 % | 51.5 % | 85,743 | 49.6 % | 56.3 % |
| 146 | -818 | Total: | 193,485 | 16.3 | 83.7 | 8.5 | 43.6 | 31.9 | 74.2 | 2020 | 63,390 | 100,611 | 12.0 % | 63.0 % | 90,586 | 12.2 % | 70.0 % |
| | -0.42% | VAP: | 146,500 | 18.3 | 81.7 | 9.4 | 43.7 | 28.7 | 71.3 | 2018 | 48,729 | 97,162 | 11.2 % | 50.2 % | 86,183 | 11.5 % | 56.5 % |
| 147 | 2,038 | Total: | 196,341 | 21.6 | 78.4 | 9.1 | 33.2 | 36.3 | 68.3 | 2020 | 70,567 | 114,557 | 19.3 % | 61.6 % | 101,618 | 20.3 % | 69.4 % |
| | 1.05% | VAP: | 159,261 | 25.1 | 74.9 | 10.0 | 32.4 | 32.4 | 63.9 | 2018 | 54,312 | 109,958 | 18.3 % | 49.4 % | 96,776 | 19.3 % | 56.1 % |
| 148 | 5,535 | Total: | 199,838 | 21.4 | 78.6 | 8.7 | 15.6 | 54.2 | 68.8 | 2020 | 60,911 | 94,720 | 31.1 % | 64.3 % | 87,335 | 31.6 % | 69.7 % |
| | 2.85% | VAP: | 148,598 | 24.5 | 75.5 | 9.2 | 15.1 | 50.7 | 65.0 | 2018 | 44,942 | 89,741 | 30.3 % | 50.1 % | 81,237 | 31.0 % | 55.3 % |
| 149 | 3,572 | Total: | 197,875 | 13.9 | 86.1 | 19.7 | 26.7 | 40.0 | 65.4 | 2020 | 58,777 | 94,919 | 23.4 % | 61.9 % | 87,592 | 23.9 % | 67.1 % |
| | 1.84% | VAP: | 148,568 | 15.4 | 84.6 | 21.4 | 24.9 | 38.2 | 62.1 | 2018 | 40,156 | 89,798 | 22.8 % | 44.7 % | 80,901 | 23.6 % | 49.6 % |

For technical reasons, election results in Texas Legislative Council reports may vary slightly from the official election results. Complete official results for all elections are maintained by the Office of the Texas Secretary of State.
 SSVR = Spanish surname voter registration

Plan Fit Verification
HOUSE DISTRICTS
PLANH2142 Compared with PLANH2101

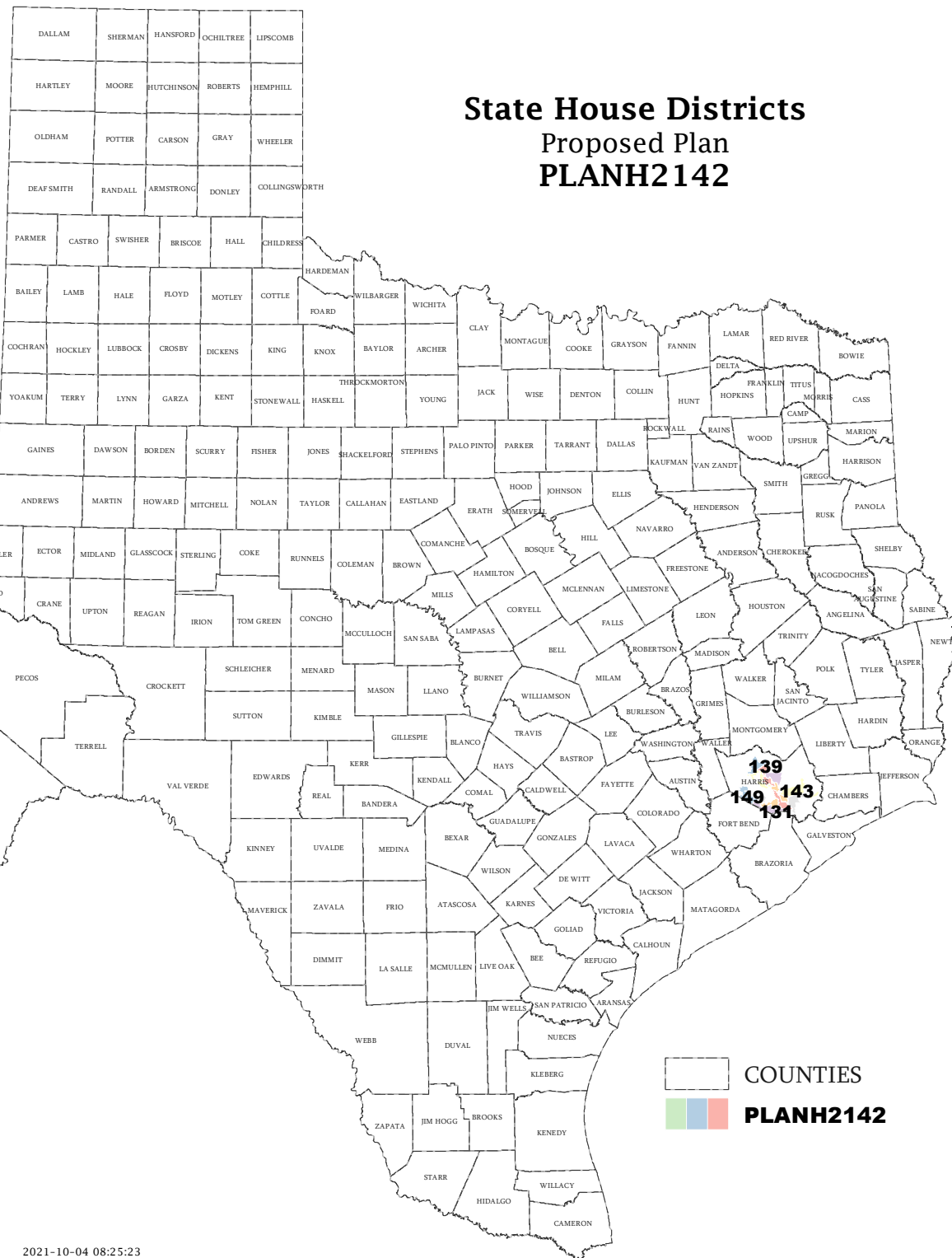
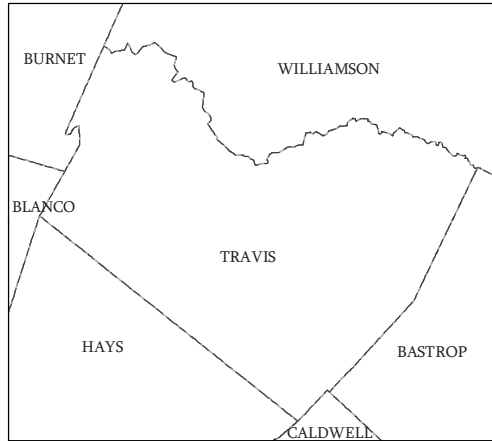
The amendment fits into the base plan.

Incumbents by District

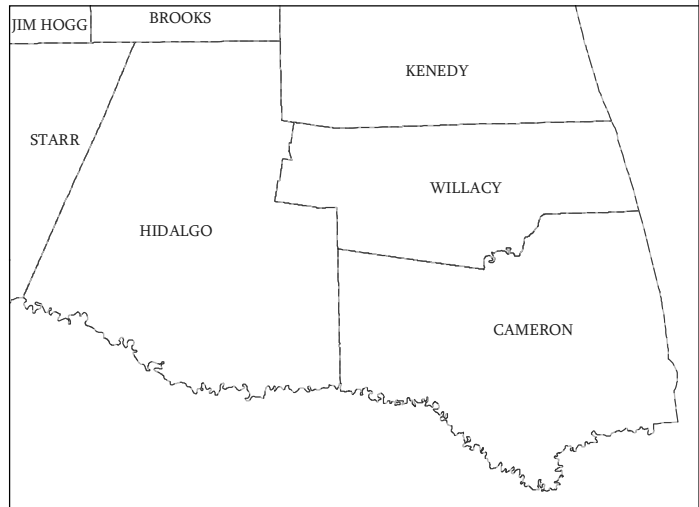
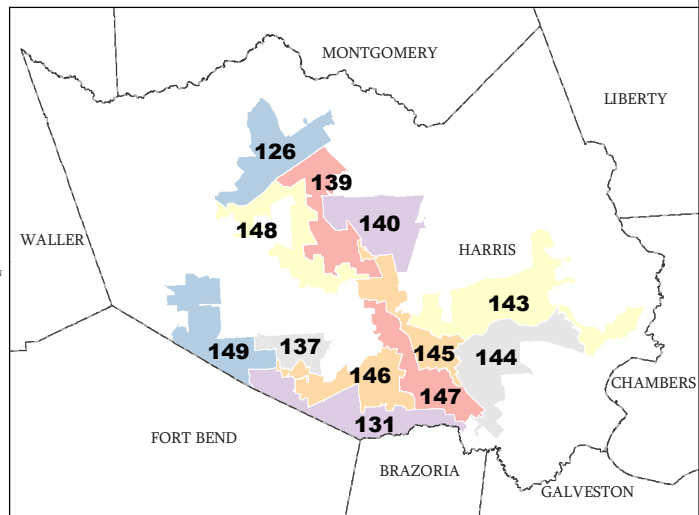
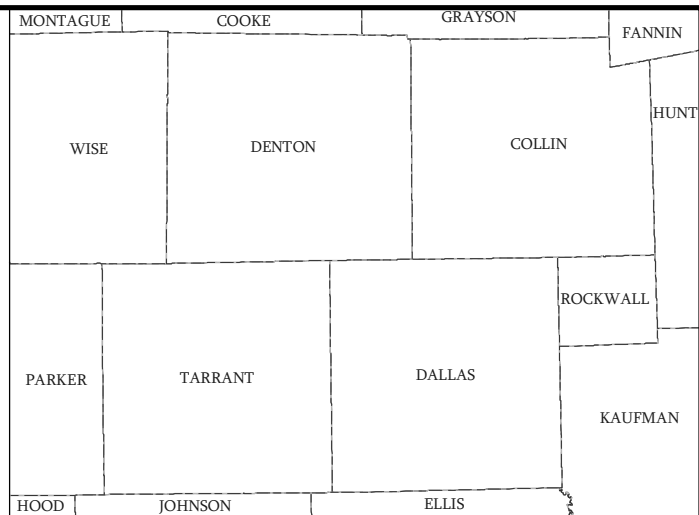
HOUSE DISTRICTS - PLANH2142

| District | Incumbents |
|-----------------|-------------------|
| 126 | Harless - R |
| 131 | Allen - D |
| 137 | Wu - D |
| 139 | Ja. Johnson - D |
| 140 | Walle - D |
| 143 | Hernandez - D |
| 144 | Perez - D |
| 145 | Morales - D |
| 146 | Thierry - D |
| 147 | Coleman - D |
| 148 | Morales Shaw - D |
| 149 | Vo - D |

State House Districts Proposed Plan PLANH2142



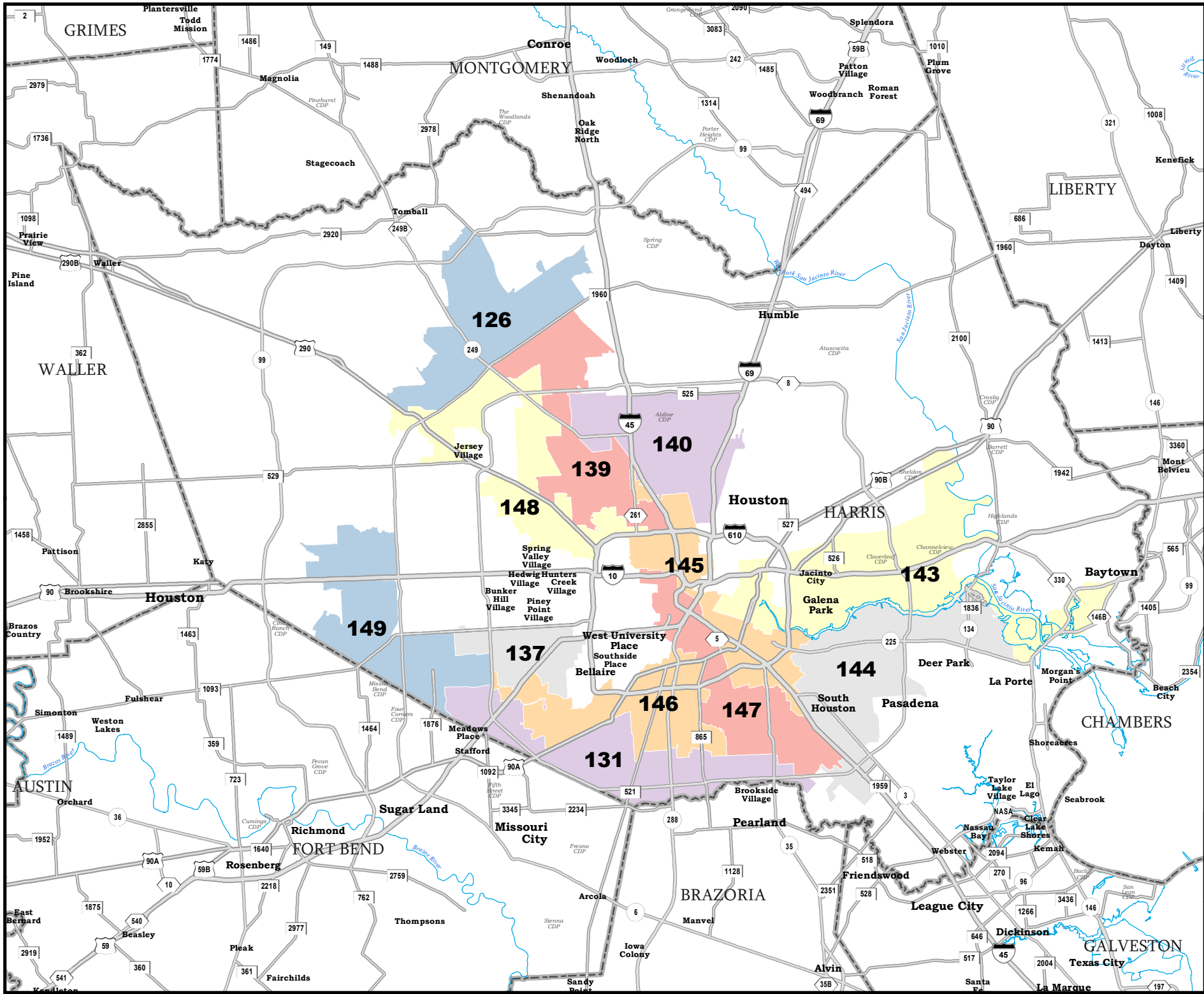
COUNTIES
PLANH2142



Map ID 5900
10/04/21 08:26:10



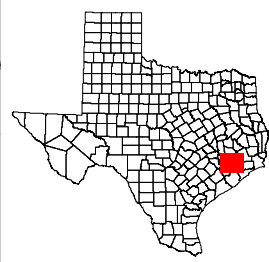
48828
2020 Census
PLANH2142 2021-10-04 08:25:23



HARRIS COUNTY

State House Districts Proposed Plan PLANH2142

COUNTIES
 PLANH2142



Map ID 5900
10/04/21 08:26:10



48828
2020 Census
PLANH2142 2021-10-04 08:25:23