

District Population Analysis with County Subtotals

CONGRESSIONAL DISTRICTS - PLANC2175

Total State Population	29,145,505
Total Districts Required	38
Ideal District Population	766,987
Unassigned Population	26,077,557
Districts in Plan	4
Unassigned Geography	Yes
Districts Contiguous	Yes

	Population	-----Deviation-----	
		Total	Percent
Plan Overall Range		0	0.00%
Smallest District (1)	766,987	0	0.00%
Largest District (1)	766,987	0	0.00%
Average (mean)	766,987	0	0.00%

PLANC2175

District Population Analysis with County Subtotals

CONGRESSIONAL DISTRICTS - PLAN2175

	Deviation		Total	Anglo	Non-Anglo	Asian	Black	Hispanic	B+H	%Anglo	%Non-Anglo	%Asian	%Black	%Hispanic	%B+H
DISTRICT 1	0	Total:	766,987	460,088	306,899	12,068	147,139	130,082	273,854	60.0	40.0	1.6	19.2	17.0	35.7
	0.00 %	VAP:	585,265	371,950	213,315	8,526	107,096	82,669	188,383	63.6	36.4	1.5	18.3	14.1	32.2
Bowie (91%)			84,255	49,308	34,947	1,422	23,980	7,112	30,769	58.5	41.5	1.7	28.5	8.4	36.5
Camp (100%)			12,464	6,734	5,730	154	2,092	3,222	5,262	54.0	46.0	1.2	16.8	25.9	42.2
Cass (100%)			28,454	21,028	7,426	199	4,941	1,336	6,224	73.9	26.1	0.7	17.4	4.7	21.9
Franklin (100%)			10,359	7,876	2,483	104	534	1,455	1,943	76.0	24.0	1.0	5.2	14.0	18.8
Gregg (100%)			124,239	68,050	56,189	2,137	27,498	24,040	50,879	54.8	45.2	1.7	22.1	19.3	41.0
Harrison (100%)			68,839	42,039	26,800	718	14,553	9,839	24,107	61.1	38.9	1.0	21.1	14.3	35.0
Marion (100%)			9,725	6,869	2,856	96	2,026	389	2,380	70.6	29.4	1.0	20.8	4.0	24.5
Morris (100%)			11,973	7,716	4,257	98	2,705	1,182	3,850	64.4	35.6	0.8	22.6	9.9	32.2
Panola (100%)			22,491	16,098	6,393	178	3,509	2,190	5,633	71.6	28.4	0.8	15.6	9.7	25.0
Red River (75%)			8,638	5,987	2,651	77	1,693	635	2,286	69.3	30.7	0.9	19.6	7.4	26.5
Rusk (100%)			52,214	32,022	20,192	349	9,032	9,579	18,445	61.3	38.7	0.7	17.3	18.3	35.3
Sabine (100%)			9,894	8,307	1,587	82	852	393	1,200	84.0	16.0	0.8	8.6	4.0	12.1
San Augustine (100%)			7,918	5,270	2,648	64	1,897	639	2,487	66.6	33.4	0.8	24.0	8.1	31.4
Shelby (100%)			24,022	14,416	9,606	458	4,095	4,685	8,702	60.0	40.0	1.9	17.0	19.5	36.2
Smith (100%)			233,479	134,452	99,027	5,402	41,819	47,281	87,936	57.6	42.4	2.3	17.9	20.3	37.7
Titus (100%)			31,247	13,410	17,837	329	3,347	13,680	16,829	42.9	57.1	1.1	10.7	43.8	53.9
Upshur (65%)			26,776	20,506	6,270	201	2,566	2,425	4,922	76.6	23.4	0.8	9.6	9.1	18.4
DISTRICT 3	0	Total:	766,987	429,281	337,706	111,888	84,898	124,107	205,228	56.0	44.0	14.6	11.1	16.2	26.8
	0.00 %	VAP:	559,329	332,029	227,300	76,459	56,991	80,057	135,324	59.4	40.6	13.7	10.2	14.3	24.2
Collin (64%)			680,661	374,245	306,416	110,453	75,726	106,520	178,849	55.0	45.0	16.2	11.1	15.6	26.3
Hunt (86%)			86,326	55,036	31,290	1,435	9,172	17,587	26,379	63.8	36.2	1.7	10.6	20.4	30.6
DISTRICT 4	0	Total:	766,987	456,408	310,579	98,443	80,358	109,555	186,511	59.5	40.5	12.8	10.5	14.3	24.3
	0.00 %	VAP:	577,526	363,615	213,911	68,304	56,043	71,788	126,347	63.0	37.0	11.8	9.7	12.4	21.9
Bowie (9%)			8,638	6,547	2,091	84	1,208	490	1,682	75.8	24.2	1.0	14.0	5.7	19.5
Collin (29%)			307,284	138,807	168,477	78,780	41,039	43,610	82,992	45.2	54.8	25.6	13.4	14.2	27.0
Delta (100%)			5,230	4,189	1,041	63	402	394	765	80.1	19.9	1.2	7.7	7.5	14.6
Denton (6%)			51,193	29,880	21,313	10,673	4,532	5,193	9,467	58.4	41.6	20.8	8.9	10.1	18.5
Fannin (100%)			35,662	27,042	8,620	319	2,628	4,218	6,760	75.8	24.2	0.9	7.4	11.8	19.0
Grayson (100%)			135,543	95,211	40,332	2,686	9,856	20,868	30,196	70.2	29.8	2.0	7.3	15.4	22.3
Hopkins (100%)			36,787	25,976	10,811	420	2,847	6,484	9,237	70.6	29.4	1.1	7.7	17.6	25.1
Hunt (14%)			13,630	10,562	3,068	117	202	2,086	2,263	77.5	22.5	0.9	1.5	15.3	16.6
Lamar (100%)			50,088	35,354	14,734	645	7,310	4,412	11,570	70.6	29.4	1.3	14.6	8.8	23.1
Rains (100%)			12,164	10,130	2,034	103	360	1,109	1,446	83.3	16.7	0.8	3.0	9.1	11.9
Red River (25%)			2,949	2,512	437	20	202	131	322	85.2	14.8	0.7	6.8	4.4	10.9
Rockwall (100%)			107,819	70,198	37,621	4,533	9,772	20,560	29,811	65.1	34.9	4.2	9.1	19.1	27.6

District Population Analysis with County Subtotals

CONGRESSIONAL DISTRICTS - PLAN2175

	Deviation		Total	Anglo	Non-Anglo	Asian	Black	Hispanic	B+H	%Anglo	%Non-Anglo	%Asian	%Black	%Hispanic	%B+H
DISTRICT 26	0	Total:	766,987	433,991	332,996	85,771	82,275	147,447	225,258	56.6	43.4	11.2	10.7	19.2	29.4
	0.00 %	VAP:	569,880	341,892	227,988	60,224	56,050	97,018	150,908	60.0	40.0	10.6	9.8	17.0	26.5
Cooke (100%)			41,668	29,404	12,264	446	1,687	8,519	10,062	70.6	29.4	1.1	4.0	20.4	24.1
Denton (75%)			679,309	370,267	309,042	84,874	79,746	130,370	205,942	54.5	45.5	12.5	11.7	19.2	30.3
Tarrant (0%)			0	0	0	0	0	0	0	0.0	0.0	0.0	0.0	0.0	0.0
Wise (67%)			46,010	34,320	11,690	451	842	8,558	9,254	74.6	25.4	1.0	1.8	18.6	20.1

Population and Voter Data
 with Voter Registration Comparison

CONGRESSIONAL DISTRICTS - PLANC2175

District	Deviation		Population								Total Voter Registration			Non-Suspense Voter Registration			
			Total	%Anglo	%Non-Anglo	%Asian	%Black	%Hispanic	%B+H	General Election	Turnout	Total	SSVR	TO/VR	Total	SSVR	TO/VR
1	0 0.00%	Total:	766,987	60.0	40.0	1.6	19.2	17.0	35.7	2020	327,136	492,448	6.0 %	66.4 %	446,300	6.0 %	73.3 %
		VAP:	585,265	63.6	36.4	1.5	18.3	14.1	32.2	2018	248,407	469,441	5.4 %	52.9 %	424,955	5.5 %	58.5 %
3	0 0.00%	Total:	766,987	56.0	44.0	14.6	11.1	16.2	26.8	2020	364,991	481,931	7.7 %	75.7 %	436,824	7.7 %	83.6 %
		VAP:	559,329	59.4	40.6	13.7	10.2	14.3	24.2	2018	262,480	429,790	7.3 %	61.1 %	385,677	7.3 %	68.1 %
4	0 0.00%	Total:	766,987	59.5	40.5	12.8	10.5	14.3	24.3	2020	346,258	476,734	6.4 %	72.6 %	432,393	6.4 %	80.1 %
		VAP:	577,526	63.0	37.0	11.8	9.7	12.4	21.9	2018	251,496	435,091	6.0 %	57.8 %	389,000	5.9 %	64.7 %
26	0 0.00%	Total:	766,987	56.6	43.4	11.2	10.7	19.2	29.4	2020	362,471	485,812	8.9 %	74.6 %	443,033	8.9 %	81.8 %
		VAP:	569,880	60.0	40.0	10.6	9.8	17.0	26.5	2018	253,583	436,230	8.6 %	58.1 %	388,009	8.6 %	65.4 %

For technical reasons, election results in Texas Legislative Council reports may vary slightly from the official election results. Complete official results for all elections are maintained by the Office of the Texas Secretary of State.
 SSVR = Spanish surname voter registration

Plan Fit Verification
CONGRESSIONAL DISTRICTS
PLANC2175 Compared with PLANC2135

The amendment fits into the base plan.

Incumbents by District

CONGRESSIONAL DISTRICTS - PLANC2175

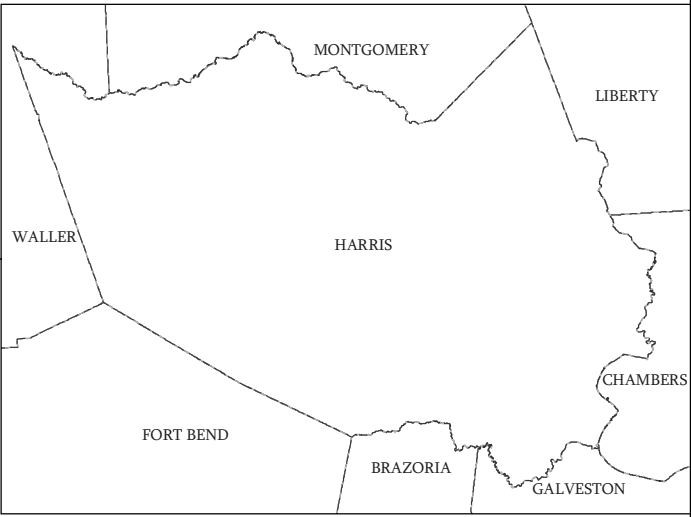
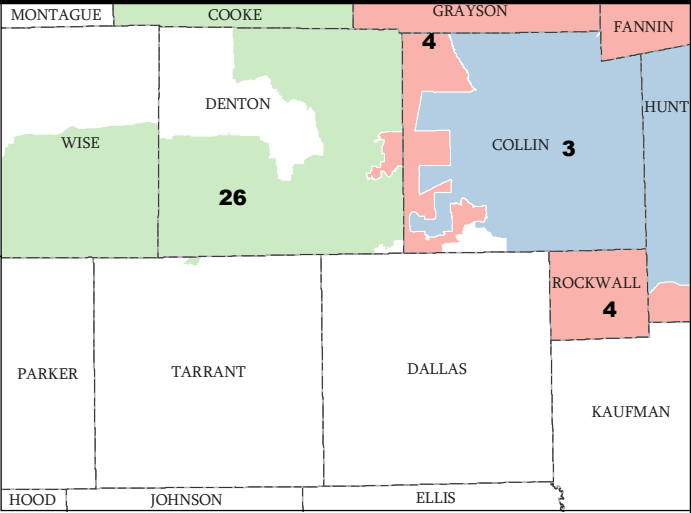
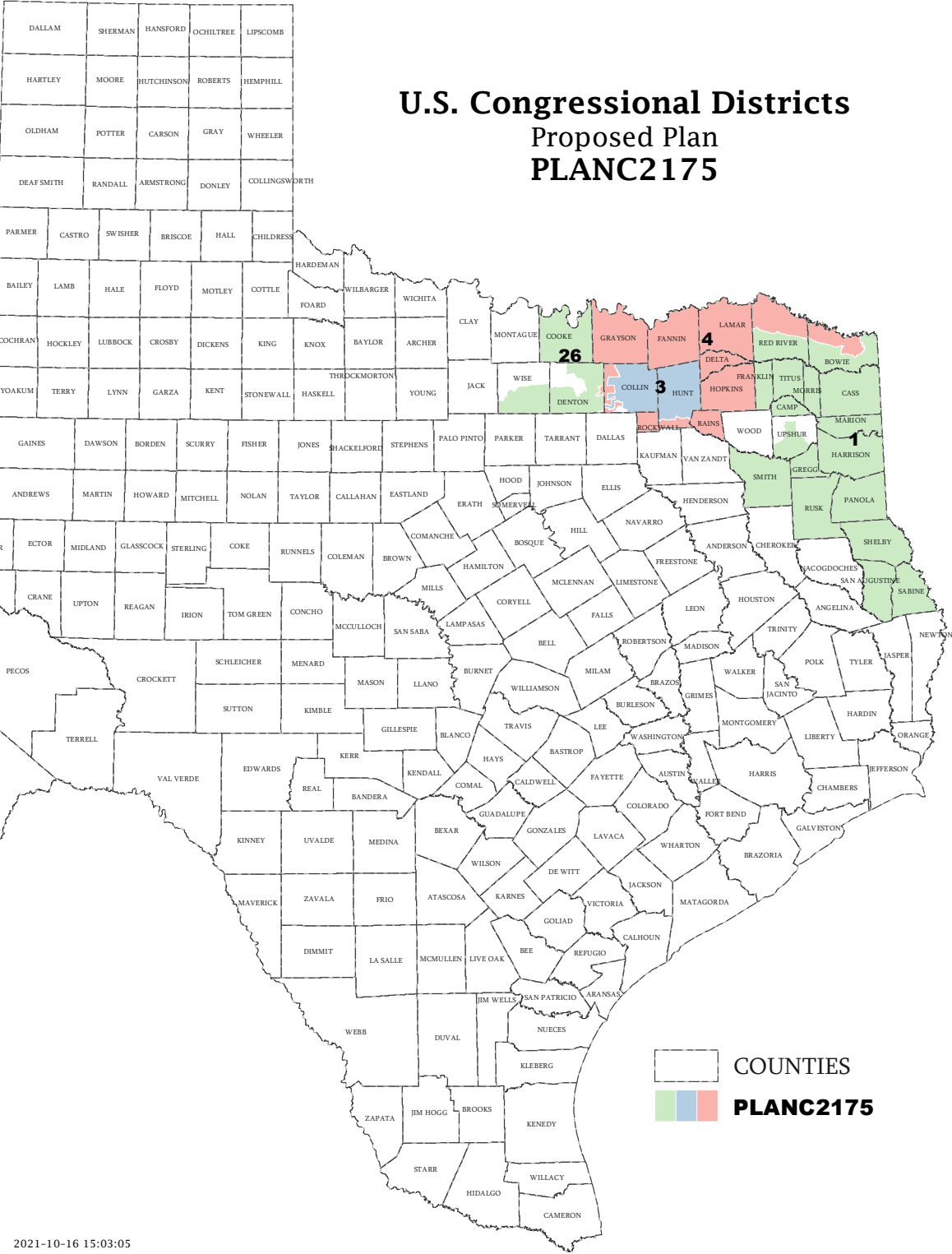
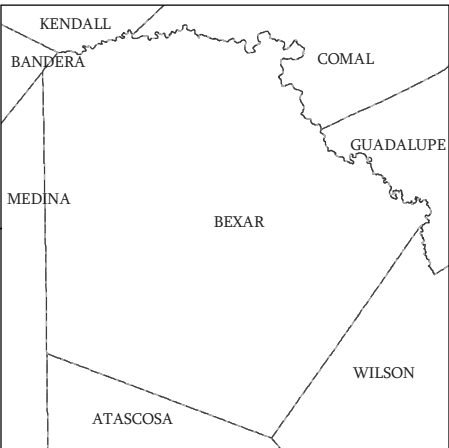
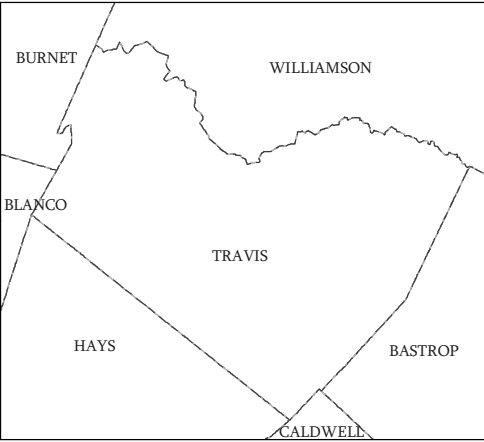
District	Incumbents
1	Gohmert - R
3	Taylor - R
4	Fallon - R
26	Burgess - R

**American Community Survey Special Tabulation
 Using Census and American Community Survey Data
 CONGRESSIONAL DISTRICTS - PLANC2175**

2020 Census			Special Tabulation of Citizen Voting Age Population (CVAP) from the 2015-2019 American Community Survey with Margins of Error												
			CVAP	Hispanic CVAP % Hispanic	Not Hispanic or Latino Citizen Voting Age Population (CVAP)										
District	Total	VAP			% Black Alone	% Black + White	% Black + American Indian	% White Alone	% American Indian Alone	% Asian Alone	% Native Hawaiian Alone	% American Indian + White	% Asian + White	% Remainder 2 or More Other	
1	766,987	585,265	548,500 (±6,663)	8.4 (±0.4)	19.3 (±0.6)	0.2 (±0.1)	0.1(±0.1)	70.1 (±0.5)	0.3 (±0.1)	0.8 (±0.1)	0.1 (±0.1)	0.5 (±0.1)	0.1 (±0.1)	0.1 (±0.1)	
3	766,987	559,329	458,990 (±5,709)	9.8 (±0.5)	9.3 (±0.5)	0.3 (±0.1)	0.0(±0.1)	70.9 (±0.6)	0.4 (±0.1)	8.2 (±0.5)	0.0 (±0.1)	0.4 (±0.1)	0.4 (±0.1)	0.2 (±0.1)	
4	766,987	577,526	482,685 (±5,283)	8.9 (±0.4)	8.9 (±0.4)	0.4 (±0.1)	0.1(±0.1)	74.3 (±0.5)	0.6 (±0.1)	5.3 (±0.3)	0.1 (±0.1)	0.9 (±0.1)	0.4 (±0.1)	0.2 (±0.1)	
26	766,987	569,880	474,885 (±5,494)	12.5 (±0.5)	8.3 (±0.5)	0.4 (±0.1)	0.1(±0.1)	71.2 (±0.5)	0.4 (±0.1)	5.8 (±0.3)	0.1 (±0.1)	0.6 (±0.1)	0.5 (±0.1)	0.1 (±0.1)	

The American Community Survey provided estimated citizen voting age population (CVAP) data at the block group level in a Special Tabulation. Because the MOE can only be calculated using whole block groups, all block groups with more than 50% of the population in a district are included in the analysis. The Red-118 report provides a summary of the block groups used in the analysis.
 The percent for each CVAP population category is that group's CVAP divided by the CVAP total.
 Numbers in parentheses are margins of error at 90% confidence level.

U.S. Congressional Districts Proposed Plan PLANC2175



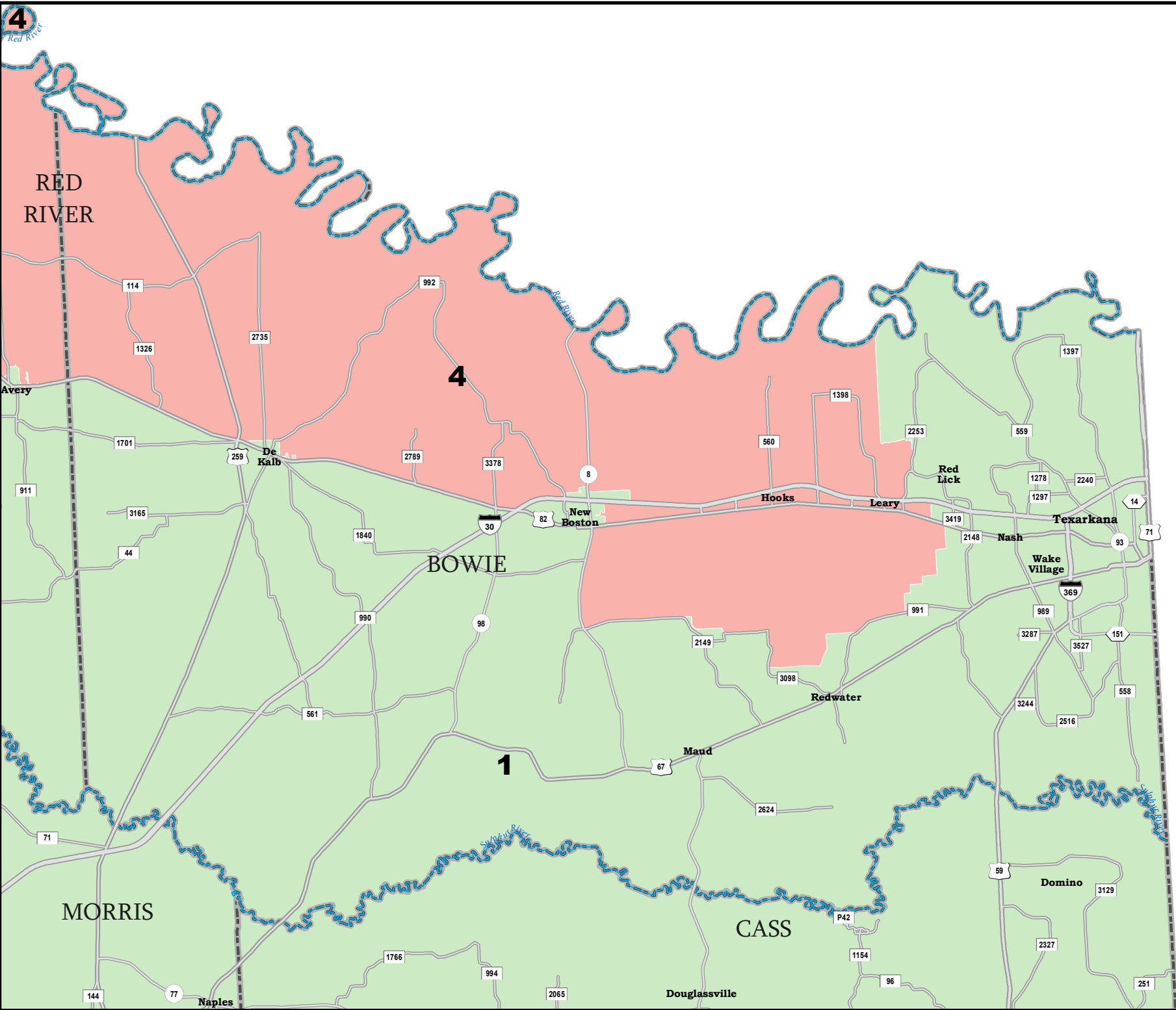
COUNTIES

 PLANC2175

Map ID 5900
10/16/21 15:06:37



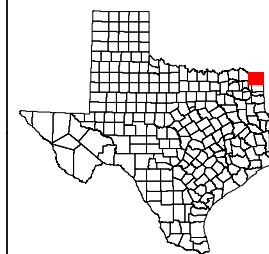
50216
2020 Census
PLANC2175 2021-10-16 15:03:05



BOWIE COUNTY

U.S. Congressional Districts
Proposed Plan
PLANC2175

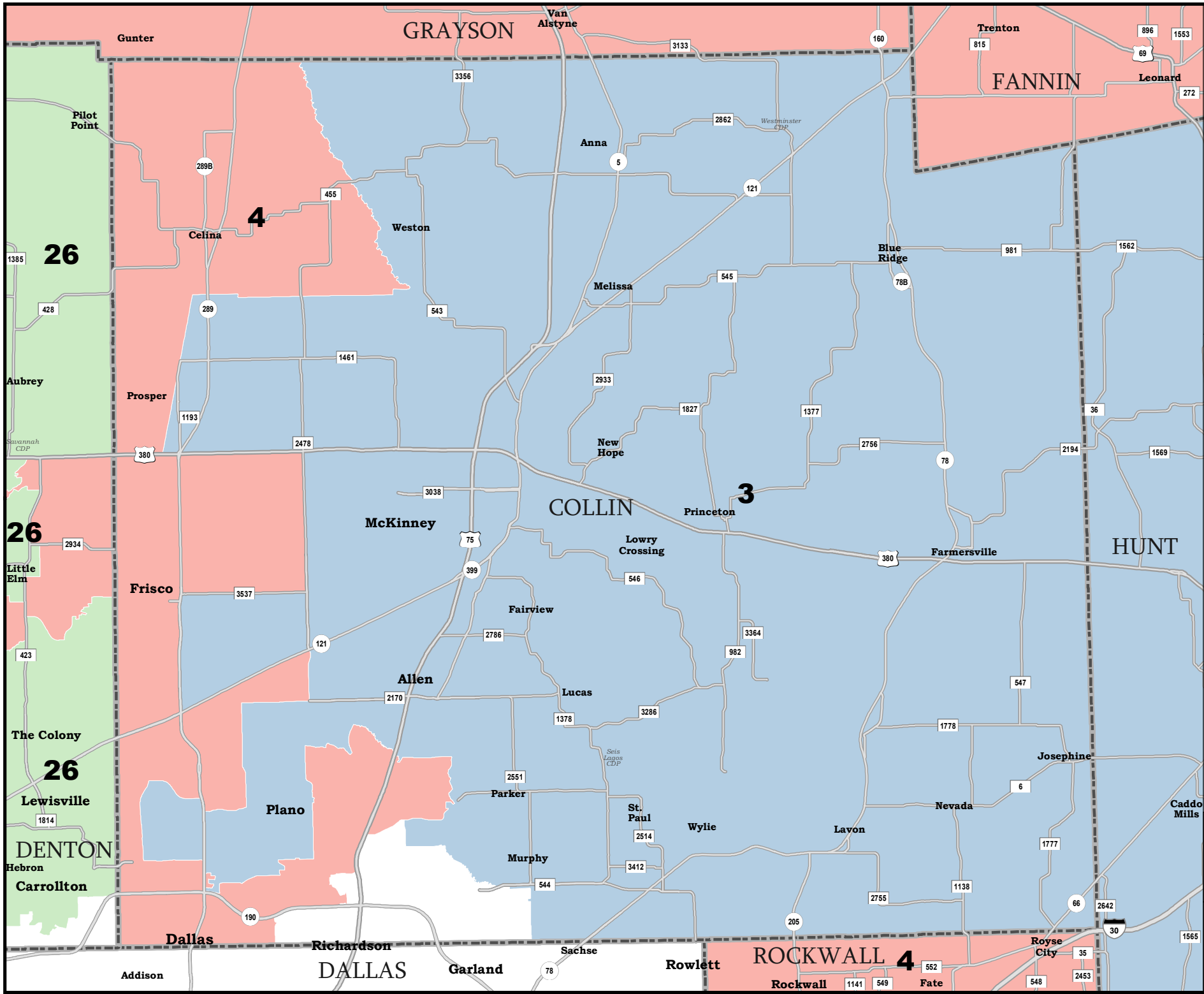
 COUNTIES
 **PLANC2175**



50216
2020 Census
PLANC2175 2021-10-16 15:03:05

Map ID 5900
10/16/21 15:06:37

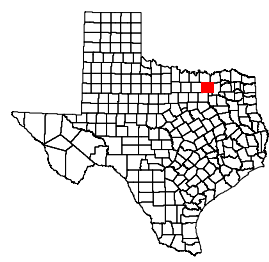




COLLIN COUNTY

U.S. Congressional Districts Proposed Plan PLANC2175

 COUNTIES
 **PLANC2175**

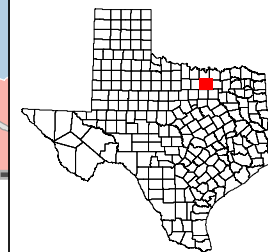


DENTON COUNTY

U.S. Congressional Districts Proposed Plan PLANC2175

 COUNTIES

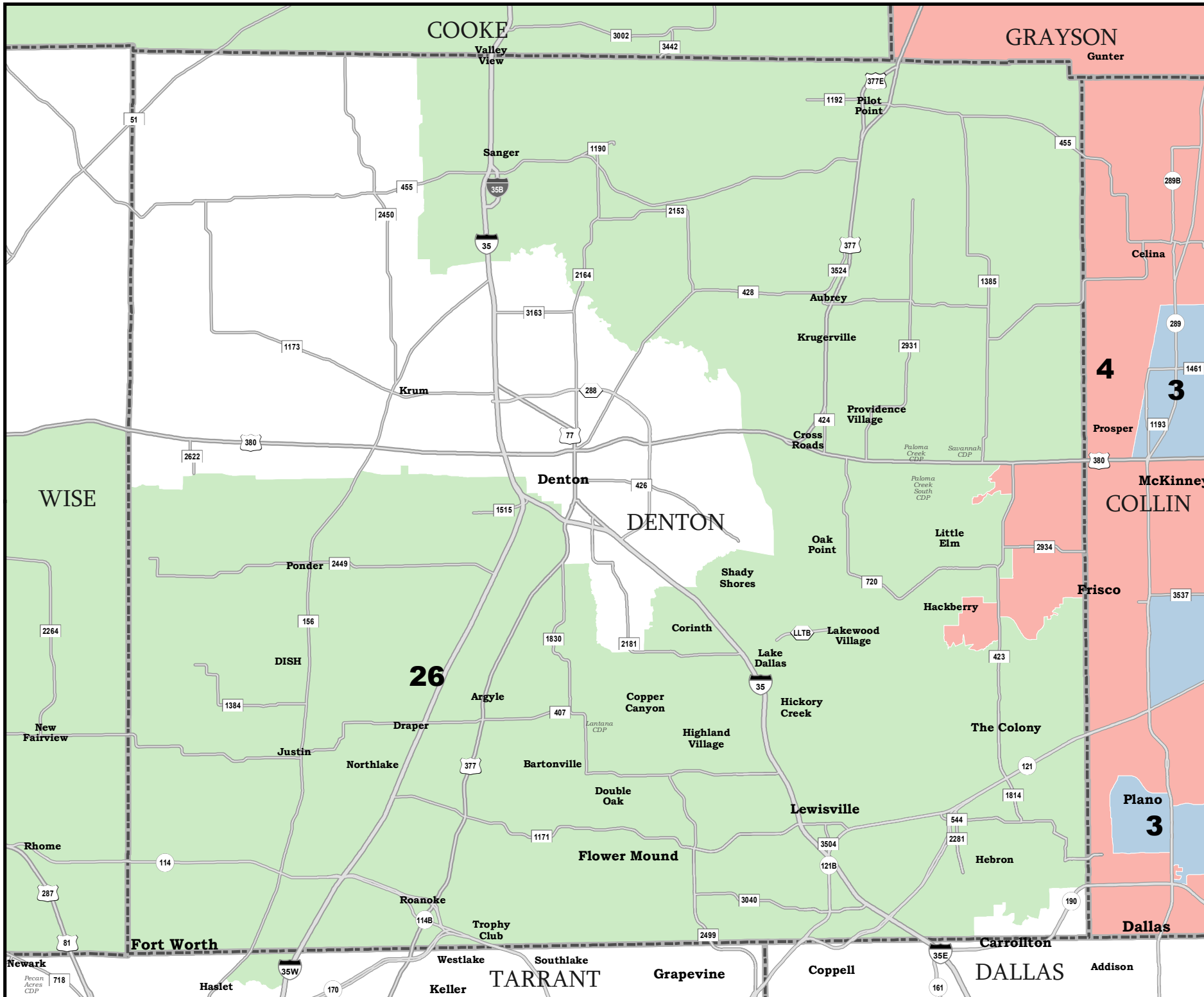
 **PLANC2175**

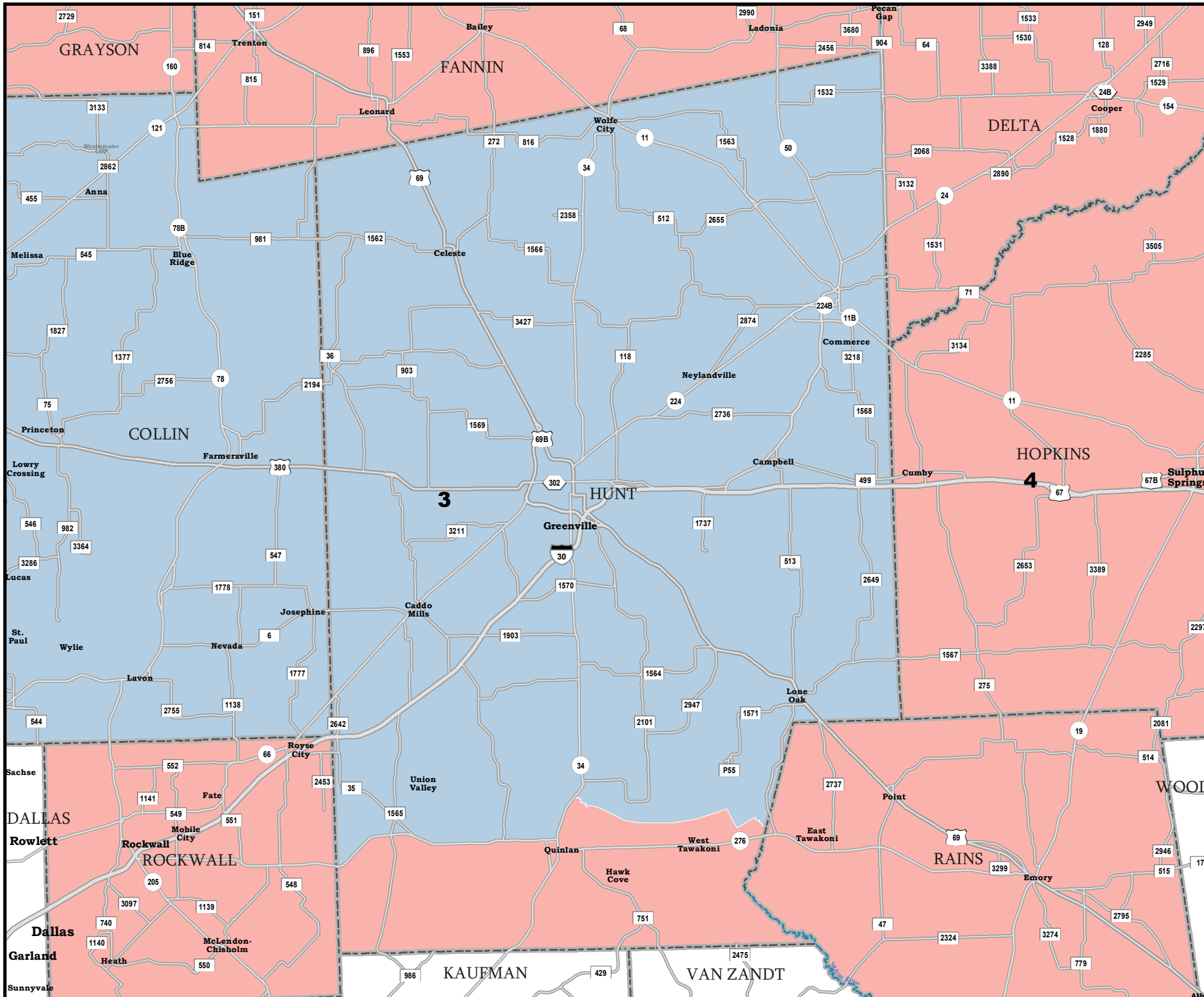


Map ID 5900
10/16/21 15:06:37



50216
2020 Census
PLANC2175 2021-10-16 15:03:05

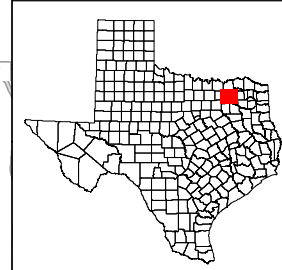




HUNT COUNTY

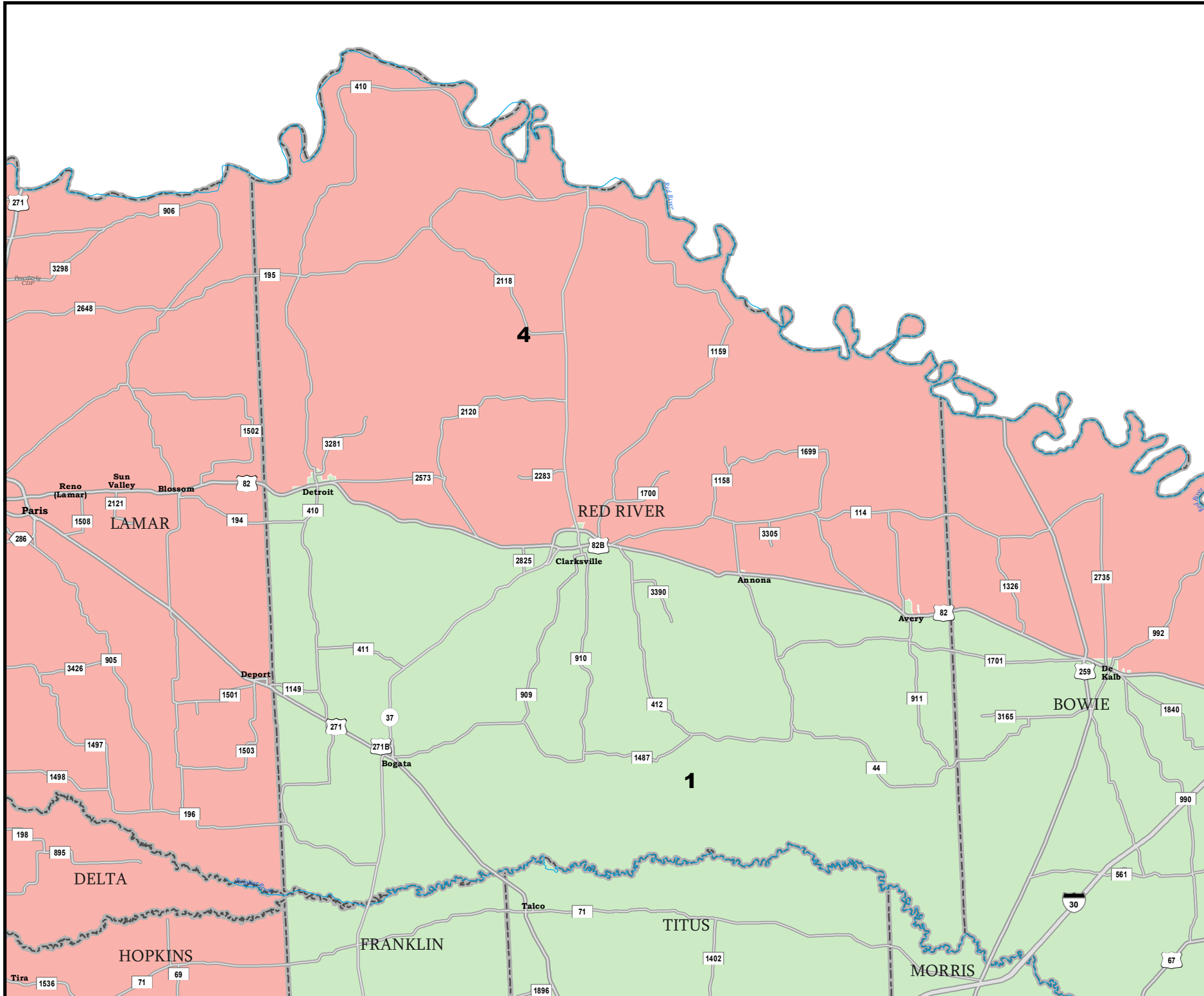
U.S. Congressional Districts Proposed Plan PLANC2175

 COUNTIES
 **PLANC2175**



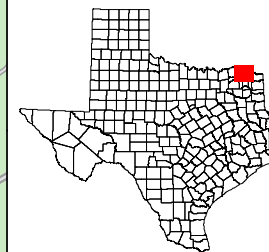
RED RIVER COUNTY

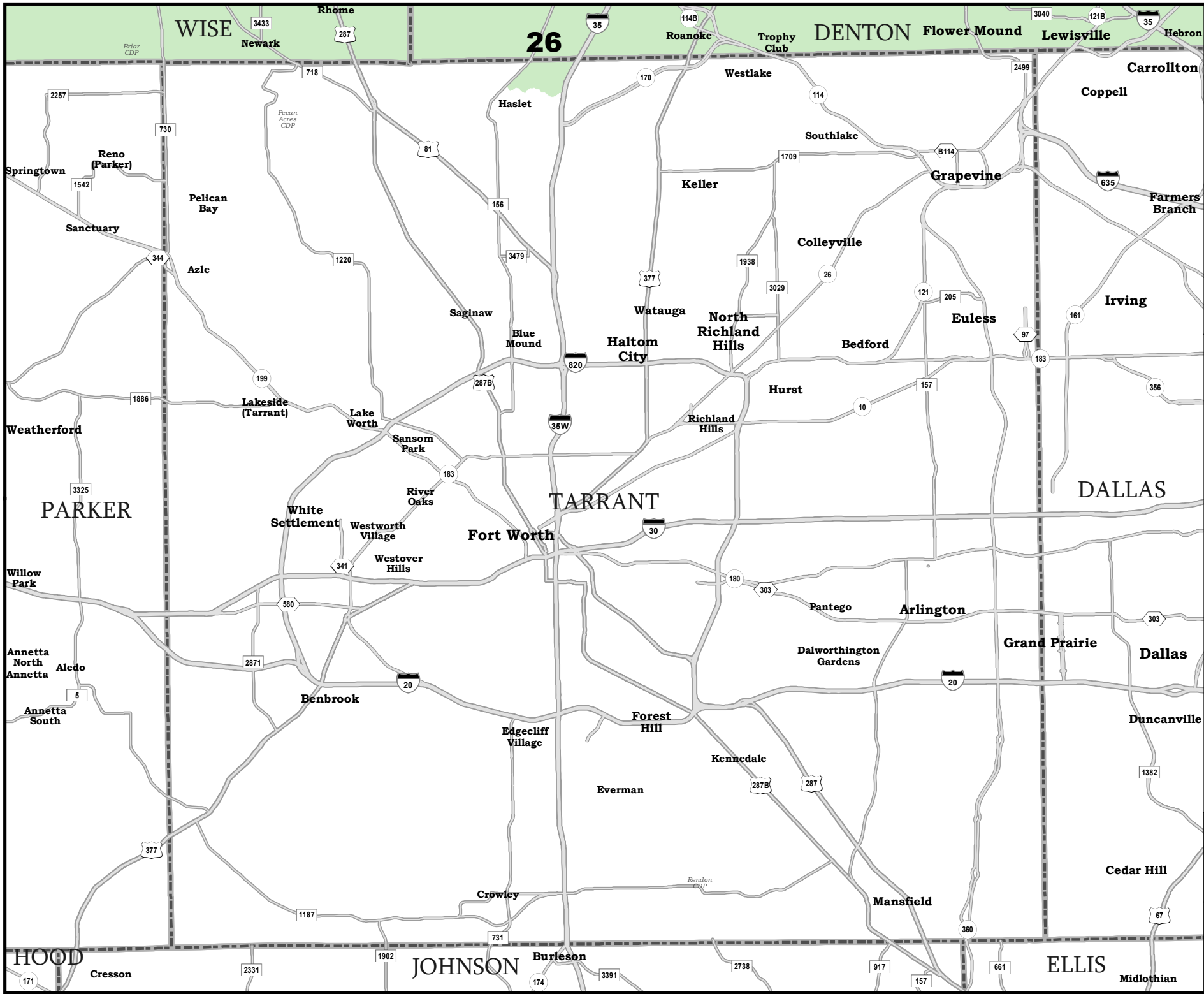
U.S. Congressional Districts Proposed Plan PLANC2175



 COUNTIES

 **PLANC2175**

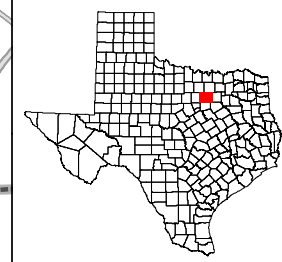


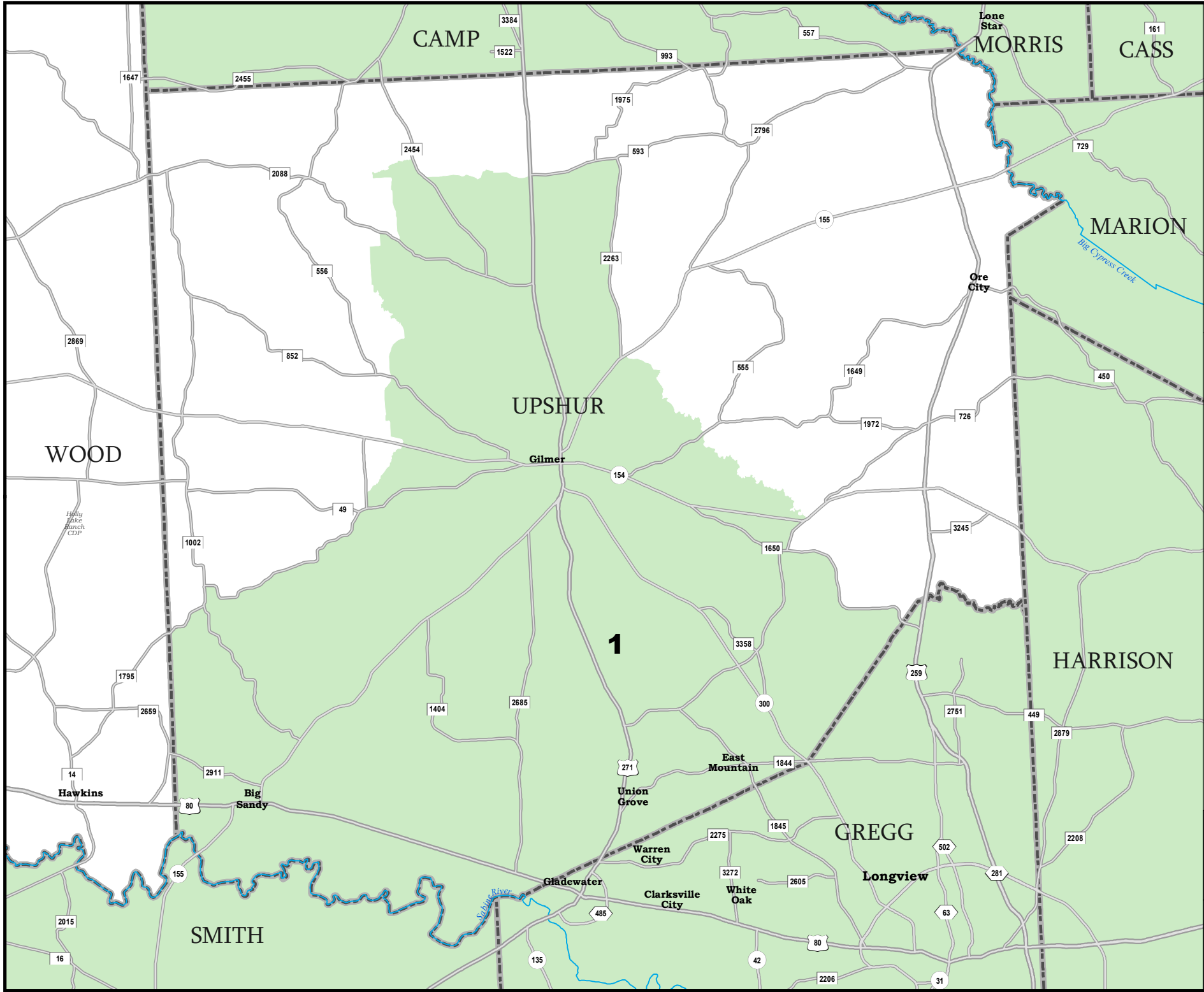


TARRANT COUNTY

U.S. Congressional Districts Proposed Plan PLANC2175

 COUNTIES
 **PLANC2175**

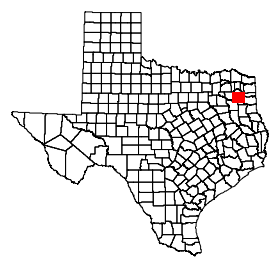




UPSHUR COUNTY

U.S. Congressional Districts Proposed Plan PLANC2175

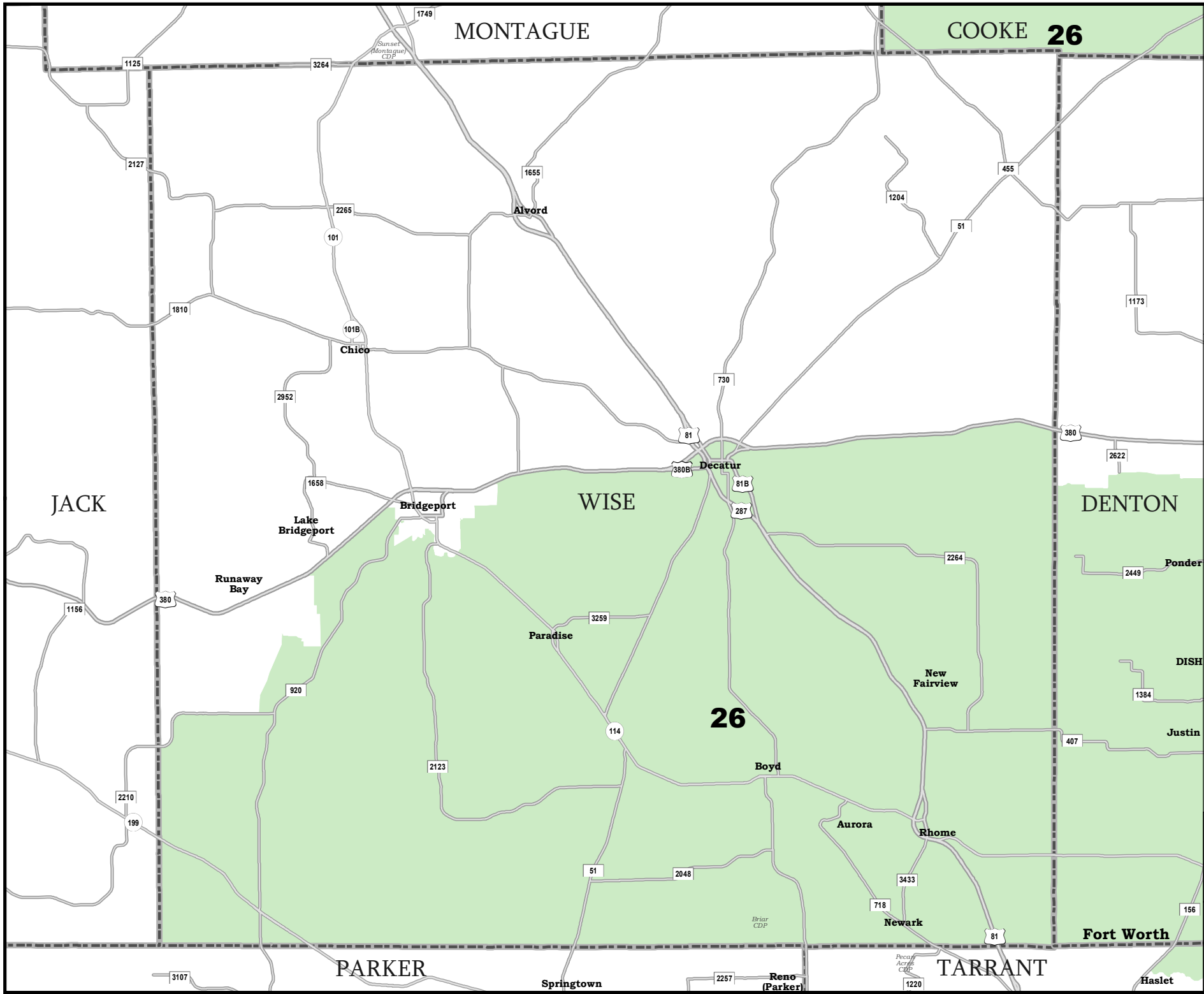
 COUNTIES
 **PLANC2175**



50216
 2020 Census
 PLANC2175 2021-10-16 15:03:05



Map ID 5900
 10/16/21 15:06:37



WISE COUNTY
U.S. Congressional Districts
 Proposed Plan
PLANC2175

 COUNTIES
 **PLANC2175**

