

## District Population Analysis with County Subtotals

### HOUSE DISTRICTS - PLANH2187

Total State Population	29,145,505
Total Districts Required	150
Ideal District Population	194,303
Unassigned Population	24,414,360
Districts in Plan	24
Unassigned Geography	Yes
Districts Contiguous	Yes

	Population	-----Deviation-----	
		Total	Percent
Plan Overall Range		17,745	9.14%
Smallest District (140)	186,188	-8,115	-4.18%
Largest District (144)	203,933	9,630	4.96%
Average (mean)	197,131	5,180	2.67%

PLANH2187

## District Population Analysis with County Subtotals

### HOUSE DISTRICTS - PLANH2187

	Deviation		Total	Anglo	Non-Anglo	Asian	Black	Hispanic	B+H	%Anglo	%Non-Anglo	%Asian	%Black	%Hispanic	%B+H
<b>DISTRICT 126</b>	-5,498	Total:	188,805	85,624	103,181	20,594	31,228	49,569	79,036	45.4	54.6	10.9	16.5	26.3	41.9
	-2.83 %	VAP:	142,610	70,172	72,438	15,317	21,379	33,653	54,228	49.2	50.8	10.7	15.0	23.6	38.0
Harris (4%)			188,805	85,624	103,181	20,594	31,228	49,569	79,036	45.4	54.6	10.9	16.5	26.3	41.9
<b>DISTRICT 127</b>	8,661	Total:	202,964	95,790	107,174	8,907	39,215	56,161	93,453	47.2	52.8	4.4	19.3	27.7	46.0
	4.46 %	VAP:	147,142	74,543	72,599	6,319	26,660	36,767	62,579	50.7	49.3	4.3	18.1	25.0	42.5
Harris (4%)			202,964	95,790	107,174	8,907	39,215	56,161	93,453	47.2	52.8	4.4	19.3	27.7	46.0
<b>DISTRICT 128</b>	-1,335	Total:	192,968	86,210	106,758	4,832	23,250	76,182	97,746	44.7	55.3	2.5	12.0	39.5	50.7
	-0.69 %	VAP:	142,047	69,769	72,278	3,583	15,885	50,071	65,205	49.1	50.9	2.5	11.2	35.2	45.9
Harris (4%)			192,968	86,210	106,758	4,832	23,250	76,182	97,746	44.7	55.3	2.5	12.0	39.5	50.7
<b>DISTRICT 129</b>	7,620	Total:	201,923	98,225	103,698	22,755	19,578	58,744	76,692	48.6	51.4	11.3	9.7	29.1	38.0
	3.92 %	VAP:	157,257	81,841	75,416	17,449	14,005	41,083	54,323	52.0	48.0	11.1	8.9	26.1	34.5
Harris (4%)			201,923	98,225	103,698	22,755	19,578	58,744	76,692	48.6	51.4	11.3	9.7	29.1	38.0
<b>DISTRICT 130</b>	-1,700	Total:	192,603	105,268	87,335	17,929	20,167	46,304	65,275	54.7	45.3	9.3	10.5	24.0	33.9
	-0.87 %	VAP:	138,299	79,817	58,482	12,172	13,437	30,202	43,123	57.7	42.3	8.8	9.7	21.8	31.2
Harris (4%)			192,603	105,268	87,335	17,929	20,167	46,304	65,275	54.7	45.3	9.3	10.5	24.0	33.9
<b>DISTRICT 131</b>	6,475	Total:	200,778	10,258	190,520	14,210	70,539	107,204	174,784	5.1	94.9	7.1	35.1	53.4	87.1
	3.33 %	VAP:	144,748	8,847	135,901	11,631	52,244	72,621	123,148	6.1	93.9	8.0	36.1	50.2	85.1
Harris (4%)			200,778	10,258	190,520	14,210	70,539	107,204	174,784	5.1	94.9	7.1	35.1	53.4	87.1
<b>DISTRICT 132</b>	-689	Total:	193,614	83,258	110,356	25,268	27,618	55,713	81,474	43.0	57.0	13.1	14.3	28.8	42.1
	-0.35 %	VAP:	140,181	64,326	75,855	17,445	18,635	37,890	55,553	45.9	54.1	12.4	13.3	27.0	39.6
Harris (4%)			193,614	83,258	110,356	25,268	27,618	55,713	81,474	43.0	57.0	13.1	14.3	28.8	42.1
<b>DISTRICT 133</b>	-4,656	Total:	189,647	93,808	95,839	27,113	30,849	36,416	65,490	49.5	50.5	14.3	16.3	19.2	34.5
	-2.40 %	VAP:	148,744	76,504	72,240	20,345	23,199	27,160	49,284	51.4	48.6	13.7	15.6	18.3	33.1
Harris (4%)			189,647	93,808	95,839	27,113	30,849	36,416	65,490	49.5	50.5	14.3	16.3	19.2	34.5
<b>DISTRICT 134</b>	2,710	Total:	197,013	115,911	81,102	33,415	15,021	30,240	44,277	58.8	41.2	17.0	7.6	15.3	22.5
	1.39 %	VAP:	163,800	99,276	64,524	25,815	12,137	24,117	35,712	60.6	39.4	15.8	7.4	14.7	21.8
Harris (4%)			197,013	115,911	81,102	33,415	15,021	30,240	44,277	58.8	41.2	17.0	7.6	15.3	22.5
<b>DISTRICT 135</b>	9,436	Total:	203,739	40,789	162,950	19,939	49,036	94,834	140,722	20.0	80.0	9.8	24.1	46.5	69.1
	4.86 %	VAP:	145,012	32,507	112,505	15,008	32,462	64,712	95,608	22.4	77.6	10.3	22.4	44.6	65.9
Harris (4%)			203,739	40,789	162,950	19,939	49,036	94,834	140,722	20.0	80.0	9.8	24.1	46.5	69.1
<b>DISTRICT 137</b>	1,794	Total:	196,097	28,661	167,436	24,283	40,165	103,911	141,336	14.6	85.4	12.4	20.5	53.0	72.1
	0.92 %	VAP:	147,453	24,594	122,859	18,744	30,561	74,032	102,737	16.7	83.3	12.7	20.7	50.2	69.7
Harris (4%)			196,097	28,661	167,436	24,283	40,165	103,911	141,336	14.6	85.4	12.4	20.5	53.0	72.1

## District Population Analysis with County Subtotals

### HOUSE DISTRICTS - PLANH2187

	Deviation		Total	Anglo	Non-Anglo	Asian	Black	Hispanic	B+H	%Anglo	%Non-Anglo	%Asian	%Black	%Hispanic	%B+H
<b>DISTRICT 138</b>	8,057	Total:	202,360	73,376	128,984	23,271	20,670	84,234	103,082	36.3	63.7	11.5	10.2	41.6	50.9
	4.15 %	VAP:	155,286	62,063	93,223	18,431	14,841	58,746	72,522	40.0	60.0	11.9	9.6	37.8	46.7
Harris (4%)			202,360	73,376	128,984	23,271	20,670	84,234	103,082	36.3	63.7	11.5	10.2	41.6	50.9
<b>DISTRICT 139</b>	7,847	Total:	202,150	27,127	175,023	11,993	74,896	88,768	161,423	13.4	86.6	5.9	37.0	43.9	79.9
	4.04 %	VAP:	148,506	22,605	125,901	9,628	55,982	60,175	114,969	15.2	84.8	6.5	37.7	40.5	77.4
Harris (4%)			202,150	27,127	175,023	11,993	74,896	88,768	161,423	13.4	86.6	5.9	37.0	43.9	79.9
<b>DISTRICT 140</b>	-8,115	Total:	186,188	10,455	175,733	4,046	19,015	153,383	170,947	5.6	94.4	2.2	10.2	82.4	91.8
	-4.18 %	VAP:	130,011	8,975	121,036	3,182	13,758	104,227	117,283	6.9	93.1	2.4	10.6	80.2	90.2
Harris (4%)			186,188	10,455	175,733	4,046	19,015	153,383	170,947	5.6	94.4	2.2	10.2	82.4	91.8
<b>DISTRICT 141</b>	7,192	Total:	201,495	12,361	189,134	4,028	93,324	92,940	183,528	6.1	93.9	2.0	46.3	46.1	91.1
	3.70 %	VAP:	141,906	10,561	131,345	3,129	67,019	61,536	127,128	7.4	92.6	2.2	47.2	43.4	89.6
Harris (4%)			201,495	12,361	189,134	4,028	93,324	92,940	183,528	6.1	93.9	2.0	46.3	46.1	91.1
<b>DISTRICT 142</b>	-691	Total:	193,612	24,315	169,297	5,407	74,397	90,347	162,243	12.6	87.4	2.8	38.4	46.7	83.8
	-0.36 %	VAP:	138,996	19,863	119,133	3,954	55,176	60,008	113,876	14.3	85.7	2.8	39.7	43.2	81.9
Harris (4%)			193,612	24,315	169,297	5,407	74,397	90,347	162,243	12.6	87.4	2.8	38.4	46.7	83.8
<b>DISTRICT 143</b>	6,207	Total:	200,510	20,300	180,210	2,524	26,374	152,057	176,408	10.1	89.9	1.3	13.2	75.8	88.0
	3.19 %	VAP:	143,832	17,244	126,588	1,937	19,227	105,347	123,530	12.0	88.0	1.3	13.4	73.2	85.9
Harris (4%)			200,510	20,300	180,210	2,524	26,374	152,057	176,408	10.1	89.9	1.3	13.2	75.8	88.0
<b>DISTRICT 144</b>	9,630	Total:	203,933	27,735	176,198	6,820	15,570	154,134	167,908	13.6	86.4	3.3	7.6	75.6	82.3
	4.96 %	VAP:	146,199	23,871	122,328	5,195	10,525	106,239	115,885	16.3	83.7	3.6	7.2	72.7	79.3
Harris (4%)			203,933	27,735	176,198	6,820	15,570	154,134	167,908	13.6	86.4	3.3	7.6	75.6	82.3
<b>DISTRICT 145</b>	-5,401	Total:	188,902	44,351	144,551	6,831	17,271	119,810	135,730	23.5	76.5	3.6	9.1	63.4	71.9
	-2.78 %	VAP:	146,523	38,509	108,014	5,260	12,954	88,746	100,976	26.3	73.7	3.6	8.8	60.6	68.9
Harris (4%)			188,902	44,351	144,551	6,831	17,271	119,810	135,730	23.5	76.5	3.6	9.1	63.4	71.9
<b>DISTRICT 146</b>	-137	Total:	194,166	31,960	162,206	16,837	88,039	58,088	143,539	16.5	83.5	8.7	45.3	29.9	73.9
	-0.07 %	VAP:	147,588	27,204	120,384	14,116	66,666	39,714	104,846	18.4	81.6	9.6	45.2	26.9	71.0
Harris (4%)			194,166	31,960	162,206	16,837	88,039	58,088	143,539	16.5	83.5	8.7	45.3	29.9	73.9
<b>DISTRICT 147</b>	6,730	Total:	201,033	42,861	158,172	18,042	66,231	74,413	138,250	21.3	78.7	9.0	32.9	37.0	68.8
	3.46 %	VAP:	162,711	40,306	122,405	15,941	52,354	53,897	104,849	24.8	75.2	9.8	32.2	33.1	64.4
Harris (4%)			201,033	42,861	158,172	18,042	66,231	74,413	138,250	21.3	78.7	9.0	32.9	37.0	68.8
<b>DISTRICT 148</b>	8,789	Total:	203,092	38,659	164,433	17,676	32,058	114,435	144,531	19.0	81.0	8.7	15.8	56.3	71.2
	4.52 %	VAP:	150,696	33,436	117,260	14,047	23,004	79,402	101,364	22.2	77.8	9.3	15.3	52.7	67.3
Harris (4%)			203,092	38,659	164,433	17,676	32,058	114,435	144,531	19.0	81.0	8.7	15.8	56.3	71.2

## District Population Analysis with County Subtotals

### HOUSE DISTRICTS - PLANH2187

	Deviation		Total	Anglo	Non-Anglo	Asian	Black	Hispanic	B+H	%Anglo	%Non-Anglo	%Asian	%Black	%Hispanic	%B+H
<b>DISTRICT 149</b>	3,572	Total:	197,875	27,472	170,403	39,008	52,750	79,122	129,382	13.9	86.1	19.7	26.7	40.0	65.4
	1.84 %	VAP:	148,568	22,897	125,671	31,756	36,983	56,743	92,240	15.4	84.6	21.4	24.9	38.2	62.1
Harris (4%)			197,875	27,472	170,403	39,008	52,750	79,122	129,382	13.9	86.1	19.7	26.7	40.0	65.4
<b>DISTRICT 150</b>	1,375	Total:	195,678	84,819	110,859	16,707	34,223	57,700	90,012	43.3	56.7	8.5	17.5	29.5	46.0
	0.71 %	VAP:	141,469	65,933	75,536	11,944	23,073	38,265	60,432	46.6	53.4	8.4	16.3	27.0	42.7
Harris (4%)			195,678	84,819	110,859	16,707	34,223	57,700	90,012	43.3	56.7	8.5	17.5	29.5	46.0

Population and Voter Data  
 with Voter Registration Comparison  
**HOUSE DISTRICTS - PLANH2187**

District	Deviation		Population							Total Voter Registration			Non-Suspense Voter Registration				
			Total	%Anglo	%Non-Anglo	%Asian	%Black	%Hispanic	%B+H	General Election	Turnout	Total	SSVR	TO/VR	Total	SSVR	TO/VR
126	-5,498 -2.83%	Total:	188,805	45.4	54.6	10.9	16.5	26.3	41.9	2020	86,536	120,140	13.9 %	72.0 %	110,096	14.1 %	78.6 %
		VAP:	142,610	49.2	50.8	10.7	15.0	23.6	38.0	2018	65,511	113,791	13.0 %	57.6 %	102,765	13.2 %	63.7 %
127	8,661 4.46%	Total:	202,964	47.2	52.8	4.4	19.3	27.7	46.0	2020	92,717	128,613	15.6 %	72.1 %	118,933	15.8 %	78.0 %
		VAP:	147,142	50.7	49.3	4.3	18.1	25.0	42.5	2018	68,480	120,377	14.5 %	56.9 %	109,192	14.8 %	62.7 %
128	-1,335 -0.69%	Total:	192,968	44.7	55.3	2.5	12.0	39.5	50.7	2020	68,865	103,753	22.9 %	66.4 %	95,824	23.2 %	71.9 %
		VAP:	142,047	49.1	50.9	2.5	11.2	35.2	45.9	2018	48,906	97,582	21.1 %	50.1 %	88,802	21.5 %	55.1 %
129	7,620 3.92%	Total:	201,923	48.6	51.4	11.3	9.7	29.1	38.0	2020	91,067	126,561	17.0 %	72.0 %	116,201	17.1 %	78.4 %
		VAP:	157,257	52.0	48.0	11.1	8.9	26.1	34.5	2018	68,034	119,195	15.8 %	57.1 %	107,283	16.1 %	63.4 %
130	-1,700 -0.87%	Total:	192,603	54.7	45.3	9.3	10.5	24.0	33.9	2020	89,868	119,217	13.4 %	75.4 %	111,684	13.5 %	80.5 %
		VAP:	138,299	57.7	42.3	8.8	9.7	21.8	31.2	2018	64,229	108,840	12.5 %	59.0 %	100,014	12.7 %	64.2 %
131	6,475 3.33%	Total:	200,778	5.1	94.9	7.1	35.1	53.4	87.1	2020	52,611	87,341	26.7 %	60.2 %	81,061	27.4 %	64.9 %
		VAP:	144,748	6.1	93.9	8.0	36.1	50.2	85.1	2018	38,900	84,474	25.1 %	46.0 %	76,746	26.2 %	50.7 %
132	-689 -0.35%	Total:	193,614	43.0	57.0	13.1	14.3	28.8	42.1	2020	82,151	110,069	15.8 %	74.6 %	102,503	15.9 %	80.1 %
		VAP:	140,181	45.9	54.1	12.4	13.3	27.0	39.6	2018	55,019	94,991	15.0 %	57.9 %	86,675	15.3 %	63.5 %
133	-4,656 -2.40%	Total:	189,647	49.5	50.5	14.3	16.3	19.2	34.5	2020	83,675	111,386	8.9 %	75.1 %	101,393	8.7 %	82.5 %
		VAP:	148,744	51.4	48.6	13.7	15.6	18.3	33.1	2018	65,824	105,166	8.5 %	62.6 %	93,703	8.4 %	70.2 %
134	2,710 1.39%	Total:	197,013	58.8	41.2	17.0	7.6	15.3	22.5	2020	107,348	138,586	8.1 %	77.5 %	126,229	8.0 %	85.0 %
		VAP:	163,800	60.6	39.4	15.8	7.4	14.7	21.8	2018	87,306	130,021	8.0 %	67.1 %	116,244	8.0 %	75.1 %
135	9,436 4.86%	Total:	203,739	20.0	80.0	9.8	24.1	46.5	69.1	2020	67,763	102,045	28.6 %	66.4 %	95,345	29.2 %	71.1 %
		VAP:	145,012	22.4	77.6	10.3	22.4	44.6	65.9	2018	46,219	92,482	27.5 %	50.0 %	84,634	28.3 %	54.6 %
137	1,794 0.92%	Total:	196,097	14.6	85.4	12.4	20.5	53.0	72.1	2020	38,056	64,146	21.8 %	59.3 %	57,319	22.0 %	66.4 %
		VAP:	147,453	16.7	83.3	12.7	20.7	50.2	69.7	2018	28,292	62,185	21.3 %	45.5 %	53,876	22.0 %	52.5 %
138	8,057 4.15%	Total:	202,360	36.3	63.7	11.5	10.2	41.6	50.9	2020	81,815	113,981	20.0 %	71.8 %	106,004	20.1 %	77.2 %
		VAP:	155,286	40.0	60.0	11.9	9.6	37.8	46.7	2018	62,917	107,625	19.2 %	58.5 %	98,200	19.5 %	64.1 %
139	7,847 4.04%	Total:	202,150	13.4	86.6	5.9	37.0	43.9	79.9	2020	67,696	108,513	20.3 %	62.4 %	100,534	20.8 %	67.3 %
		VAP:	148,506	15.2	84.8	6.5	37.7	40.5	77.4	2018	50,919	104,991	18.9 %	48.5 %	95,759	19.4 %	53.2 %
140	-8,115 -4.18%	Total:	186,188	5.6	94.4	2.2	10.2	82.4	91.8	2020	35,202	69,905	62.4 %	50.4 %	66,421	63.4 %	53.0 %
		VAP:	130,011	6.9	93.1	2.4	10.6	80.2	90.2	2018	25,200	66,390	61.4 %	38.0 %	62,187	62.6 %	40.5 %
141	7,192 3.70%	Total:	201,495	6.1	93.9	2.0	46.3	46.1	91.1	2020	47,004	87,422	21.2 %	53.8 %	77,586	22.0 %	60.6 %
		VAP:	141,906	7.4	92.6	2.2	47.2	43.4	89.6	2018	32,953	84,391	19.5 %	39.0 %	73,995	20.4 %	44.5 %
142	-691 -0.36%	Total:	193,612	12.6	87.4	2.8	38.4	46.7	83.8	2020	55,807	90,617	25.4 %	61.6 %	83,893	26.2 %	66.5 %
		VAP:	138,996	14.3	85.7	2.8	39.7	43.2	81.9	2018	38,306	83,735	23.6 %	45.7 %	76,226	24.5 %	50.3 %
143	6,207 3.19%	Total:	200,510	10.1	89.9	1.3	13.2	75.8	88.0	2020	44,346	83,259	57.3 %	53.3 %	77,396	58.6 %	57.3 %
		VAP:	143,832	12.0	88.0	1.3	13.4	73.2	85.9	2018	32,637	80,013	56.3 %	40.8 %	73,815	57.8 %	44.2 %
144	9,630 4.96%	Total:	203,933	13.6	86.4	3.3	7.6	75.6	82.3	2020	46,654	85,056	57.6 %	54.9 %	78,286	58.8 %	59.6 %
		VAP:	146,199	16.3	83.7	3.6	7.2	72.7	79.3	2018	34,150	81,521	56.0 %	41.9 %	73,807	57.4 %	46.3 %
145	-5,401 -2.78%	Total:	188,902	23.5	76.5	3.6	9.1	63.4	71.9	2020	65,089	102,385	45.3 %	63.6 %	95,067	46.3 %	68.5 %
		VAP:	146,523	26.3	73.7	3.6	8.8	60.6	68.9	2018	50,300	96,333	46.7 %	52.2 %	88,078	48.1 %	57.1 %
146	-137 -0.07%	Total:	194,166	16.5	83.5	8.7	45.3	29.9	73.9	2020	65,891	103,740	11.9 %	63.5 %	93,598	12.1 %	70.4 %
		VAP:	147,588	18.4	81.6	9.6	45.2	26.9	71.0	2018	50,422	99,680	11.1 %	50.6 %	88,629	11.4 %	56.9 %

For technical reasons, election results in Texas Legislative Council reports may vary slightly from the official election results. Complete official results for all elections are maintained by the Office of the Texas Secretary of State.  
 SSVR = Spanish surname voter registration

**Population and Voter Data  
 with Voter Registration Comparison  
 HOUSE DISTRICTS - PLANH2187**

District	Deviation		Total	Population						General Election	Turnout	Total Voter Registration			Non-Suspense Voter Registration		
				%Anglo	%Non-Anglo	%Asian	%Black	%Hispanic	%B+H			Total	SSVR	TO/VR	Total	SSVR	TO/VR
147	6,730 3.46%	Total:	201,033	21.3	78.7	9.0	32.9	37.0	68.8	2020	71,638	116,426	19.8 %	61.5 %	103,313	20.8 %	69.3 %
		VAP:	162,711	24.8	75.2	9.8	32.2	33.1	64.4	2018	55,117	111,751	18.8 %	49.3 %	98,358	19.8 %	56.0 %
148	8,789 4.52%	Total:	203,092	19.0	81.0	8.7	15.8	56.3	71.2	2020	59,377	93,674	32.4 %	63.4 %	86,339	32.9 %	68.8 %
		VAP:	150,696	22.2	77.8	9.3	15.3	52.7	67.3	2018	43,404	88,646	31.6 %	49.0 %	80,267	32.3 %	54.1 %
149	3,572 1.84%	Total:	197,875	13.9	86.1	19.7	26.7	40.0	65.4	2020	58,777	94,919	23.4 %	61.9 %	87,592	23.9 %	67.1 %
		VAP:	148,568	15.4	84.6	21.4	24.9	38.2	62.1	2018	40,156	89,798	22.8 %	44.7 %	80,901	23.6 %	49.6 %
150	1,375 0.71%	Total:	195,678	43.3	56.7	8.5	17.5	29.5	46.0	2020	81,109	113,704	16.0 %	71.3 %	105,041	16.2 %	77.2 %
		VAP:	141,469	46.6	53.4	8.4	16.3	27.0	42.7	2018	57,016	102,691	15.2 %	55.5 %	93,361	15.5 %	61.1 %

For technical reasons, election results in Texas Legislative Council reports may vary slightly from the official election results. Complete official results for all elections are maintained by the Office of the Texas Secretary of State.  
 SSVR = Spanish surname voter registration

**Plan Fit Verification**  
**HOUSE DISTRICTS**  
**PLANH2187 Compared with PLANH2176**

**The amendment fits into the base plan.**

## Incumbents by District

### HOUSE DISTRICTS - PLANH2187

<b>District</b>	<b>Incumbents</b>
126	Harless - R
127	Huberty - R
128	Cain - R
129	Paul - R
130	Oliverson - R
131	Allen - D
132	Schofield - R
133	Murphy - R
134	A. Johnson - D
135	Rosenthal - D
137	Wu - D
138	Hull - R
139	Ja. Johnson - D
140	Walle - D
141	S. Thompson - D
142	Dutton, Jr. - D
143	Hernandez - D
144	Perez - D
145	Morales - D
146	Thierry - D
147	Coleman - D
148	Morales Shaw - D
149	Vo - D
150	Swanson - R



American Community Survey Special Tabulation  
 Using Census and American Community Survey Data  
**HOUSE DISTRICTS - PLANH2187**

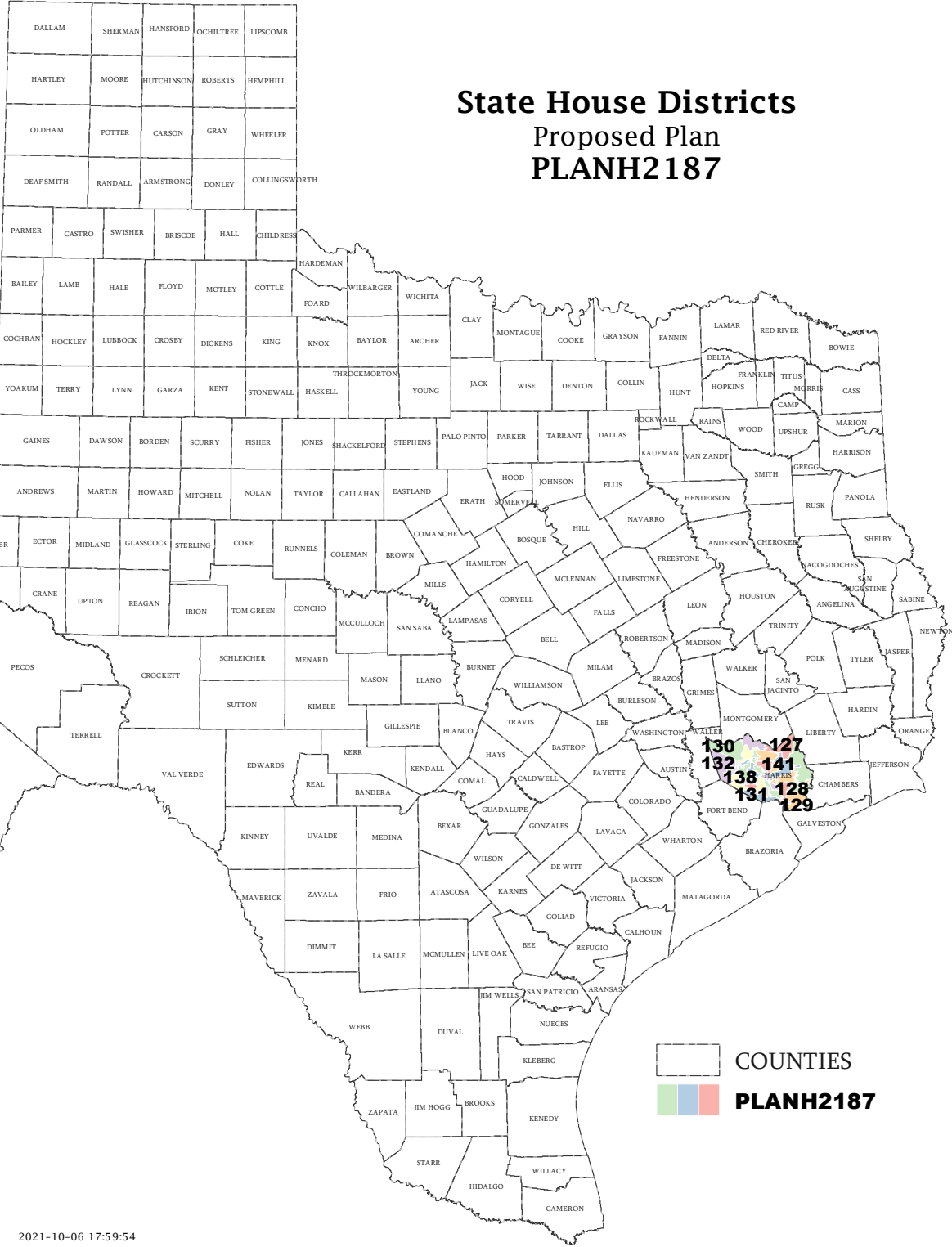
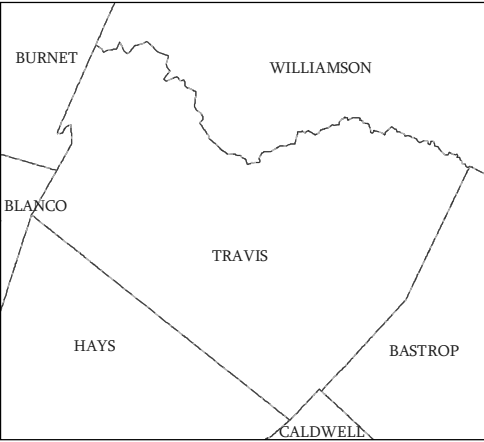
Special Tabulation of Citizen Voting Age Population (CVAP) from the 2015-2019 American Community Survey with Margins of Error														
2020 Census			Hispanic CVAP	Not Hispanic or Latino Citizen Voting Age Population (CVAP)										
District	Total	VAP		CVAP	% Hispanic	% Black Alone	% Black + White	% Black + American Indian	% White Alone	% American Indian Alone	% Asian Alone	% Native Hawaiian Alone	% American Indian + White	% Asian + White
126	188,805	142,610	122,510 (±3,363)	16.9 (±1.3)	13.9 (±1.3)	0.3 (±0.2)	0.0(±0.1)	60.7 (±1.2)	0.1 (±0.1)	7.0 (±0.8)	0.1 (±0.1)	0.3 (±0.2)	0.5 (±0.3)	0.2 (±0.2)
127	202,964	147,142	129,230 (±3,261)	21.0 (±1.4)	16.7 (±1.3)	0.4 (±0.2)	0.0(±0.1)	58.5 (±1.2)	0.1 (±0.1)	2.3 (±0.4)	0.3 (±0.3)	0.3 (±0.2)	0.2 (±0.2)	0.3 (±0.3)
128	192,968	142,047	118,840 (±3,233)	28.9 (±1.7)	10.2 (±1.1)	0.3 (±0.2)	0.0(±0.1)	58.0 (±1.2)	0.3 (±0.2)	1.5 (±0.4)	0.0 (±0.1)	0.4 (±0.2)	0.1 (±0.1)	0.2 (±0.1)
129	201,923	157,257	136,765 (±3,016)	23.0 (±1.4)	7.4 (±0.9)	0.5 (±0.2)	0.1(±0.1)	59.1 (±0.9)	0.2 (±0.1)	8.0 (±0.7)	0.0 (±0.1)	0.6 (±0.2)	0.5 (±0.2)	0.4 (±0.3)
130	192,603	138,299	118,515 (±3,242)	17.2 (±1.4)	9.8 (±1.0)	0.1 (±0.1)	0.0(±0.1)	64.2 (±1.3)	0.2 (±0.2)	7.1 (±0.9)	0.0 (±0.1)	0.7 (±0.4)	0.3 (±0.2)	0.3 (±0.3)
131	200,778	144,748	105,195 (±3,650)	33.7 (±1.7)	48.0 (±2.1)	0.2 (±0.2)	0.2(±0.2)	10.6 (±0.8)	0.1 (±0.2)	6.9 (±0.8)	0.0 (±0.1)	0.0 (±0.1)	0.2 (±0.2)	0.1 (±0.1)
132	193,614	140,181	111,290 (±3,232)	22.1 (±1.7)	10.7 (±1.4)	0.3 (±0.2)	0.0(±0.1)	56.7 (±1.2)	0.5 (±0.3)	8.3 (±0.9)	0.0 (±0.1)	0.4 (±0.2)	0.5 (±0.2)	0.4 (±0.3)
133	189,647	148,744	111,775 (±2,804)	14.1 (±1.1)	13.0 (±1.3)	0.2 (±0.2)	0.2(±0.3)	63.4 (±1.0)	0.2 (±0.2)	7.6 (±0.7)	0.0 (±0.1)	0.3 (±0.2)	0.6 (±0.2)	0.1 (±0.2)
134	197,013	163,800	137,355 (±2,883)	12.0 (±0.8)	6.3 (±0.7)	0.3 (±0.2)	0.0(±0.1)	69.7 (±1.0)	0.2 (±0.2)	9.8 (±0.7)	0.0 (±0.1)	0.5 (±0.2)	1.0 (±0.3)	0.2 (±0.2)
135	203,739	145,012	103,760 (±3,692)	35.1 (±2.3)	22.7 (±1.9)	0.3 (±0.2)	0.1(±0.1)	31.2 (±1.7)	0.2 (±0.2)	9.3 (±1.2)	0.1 (±0.2)	0.2 (±0.2)	0.6 (±0.3)	0.3 (±0.2)
137	196,097	147,453	78,335 (±2,685)	30.8 (±1.8)	27.3 (±2.2)	0.2 (±0.2)	0.0(±0.2)	29.4 (±1.4)	0.3 (±0.3)	11.0 (±1.2)	0.0 (±0.2)	0.3 (±0.2)	0.3 (±0.2)	0.2 (±0.3)
138	202,360	155,286	113,835 (±2,793)	26.1 (±1.5)	9.7 (±1.2)	0.3 (±0.2)	0.0(±0.1)	53.7 (±0.9)	0.2 (±0.2)	9.2 (±0.9)	0.0 (±0.1)	0.3 (±0.2)	0.3 (±0.1)	0.3 (±0.2)
139	202,150	148,506	118,515 (±3,350)	27.5 (±1.6)	44.3 (±1.7)	0.3 (±0.2)	0.4(±0.2)	20.5 (±0.8)	0.2 (±0.2)	6.1 (±0.8)	0.1 (±0.2)	0.3 (±0.2)	0.2 (±0.2)	0.1 (±0.1)
140	186,188	130,011	79,725 (±2,654)	70.2 (±2.0)	15.0 (±1.2)	0.1 (±0.2)	0.1(±0.2)	10.8 (±0.9)	0.3 (±0.2)	3.3 (±0.7)	0.0 (±0.2)	0.1 (±0.2)	0.0 (±0.2)	0.0 (±0.2)
141	201,495	141,906	107,125 (±3,498)	26.8 (±1.7)	58.2 (±1.9)	0.4 (±0.2)	0.5(±0.3)	11.8 (±1.0)	0.1 (±0.1)	1.7 (±0.4)	0.1 (±0.2)	0.1 (±0.1)	0.1 (±0.2)	0.1 (±0.2)
142	193,612	138,996	109,910 (±4,452)	31.0 (±1.6)	45.8 (±2.2)	0.3 (±0.2)	0.0(±0.1)	20.2 (±1.1)	0.2 (±0.2)	1.7 (±0.4)	0.0 (±0.1)	0.4 (±0.3)	0.1 (±0.1)	0.3 (±0.2)
143	200,510	143,832	100,165 (±2,971)	60.0 (±1.6)	19.5 (±1.5)	0.3 (±0.2)	0.1(±0.2)	18.5 (±1.0)	0.1 (±0.2)	1.0 (±0.4)	0.0 (±0.2)	0.3 (±0.2)	0.0 (±0.2)	0.1 (±0.2)
144	203,933	146,199	107,960 (±3,248)	64.8 (±1.8)	8.6 (±1.1)	0.2 (±0.2)	0.2(±0.3)	22.8 (±1.1)	0.1 (±0.2)	2.8 (±0.5)	0.0 (±0.1)	0.3 (±0.2)	0.1 (±0.2)	0.0 (±0.1)
145	188,902	146,523	108,435 (±2,825)	55.7 (±1.6)	9.2 (±0.8)	0.1 (±0.2)	0.1(±0.2)	32.1 (±0.9)	0.1 (±0.2)	2.1 (±0.4)	0.0 (±0.2)	0.2 (±0.2)	0.3 (±0.2)	0.1 (±0.2)
146	194,166	147,588	116,215 (±3,181)	15.7 (±1.2)	52.0 (±1.8)	0.3 (±0.2)	0.0(±0.1)	25.3 (±1.0)	0.2 (±0.2)	5.9 (±0.7)	0.1 (±0.2)	0.1 (±0.1)	0.2 (±0.2)	0.1 (±0.2)
147	201,033	162,711	129,899 (±3,439)	24.8 (±1.4)	39.1 (±1.4)	0.6 (±0.3)	0.1(±0.1)	28.7 (±1.0)	0.1 (±0.1)	5.7 (±0.6)	0.1 (±0.1)	0.2 (±0.1)	0.4 (±0.2)	0.2 (±0.2)
148	203,092	150,696	114,430 (±3,323)	37.7 (±1.8)	18.7 (±1.6)	0.3 (±0.2)	0.0(±0.1)	32.7 (±1.2)	0.2 (±0.2)	9.5 (±1.0)	0.1 (±0.2)	0.4 (±0.2)	0.2 (±0.1)	0.2 (±0.2)
149	197,875	148,568	112,510 (±3,588)	30.3 (±2.0)	24.6 (±1.7)	0.4 (±0.2)	0.1(±0.2)	22.0 (±1.2)	0.3 (±0.2)	21.4 (±1.3)	0.0 (±0.1)	0.2 (±0.2)	0.5 (±0.3)	0.2 (±0.2)
150	195,678	141,469	113,180 (±3,001)	20.0 (±1.3)	14.1 (±1.4)	0.3 (±0.2)	0.0(±0.1)	58.2 (±1.2)	0.5 (±0.4)	6.0 (±0.7)	0.0 (±0.1)	0.3 (±0.2)	0.4 (±0.2)	0.2 (±0.2)

The American Community Survey provided estimated citizen voting age population (CVAP) data at the block group level in a Special Tabulation. Because the MOE can only be calculated using whole block groups, all block groups with more than 50% of the population in a district are included in the analysis. The Red-118 report provides a summary of the block groups used in the analysis.

The percent for each CVAP population category is that group's CVAP divided by the CVAP total.

Numbers in parentheses are margins of error at 90% confidence level.

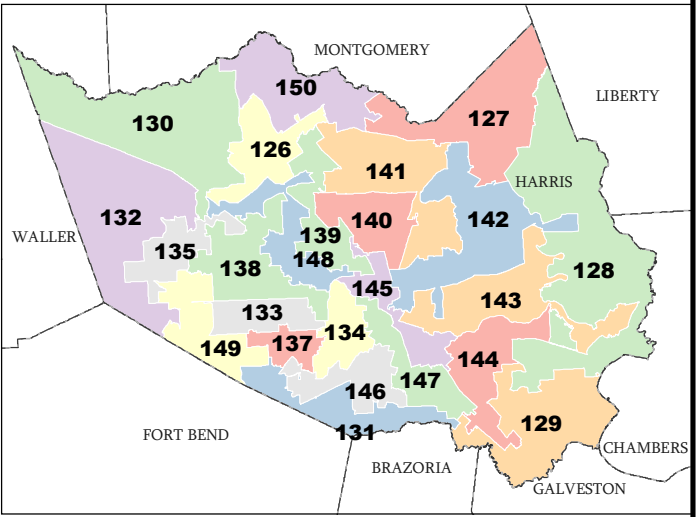
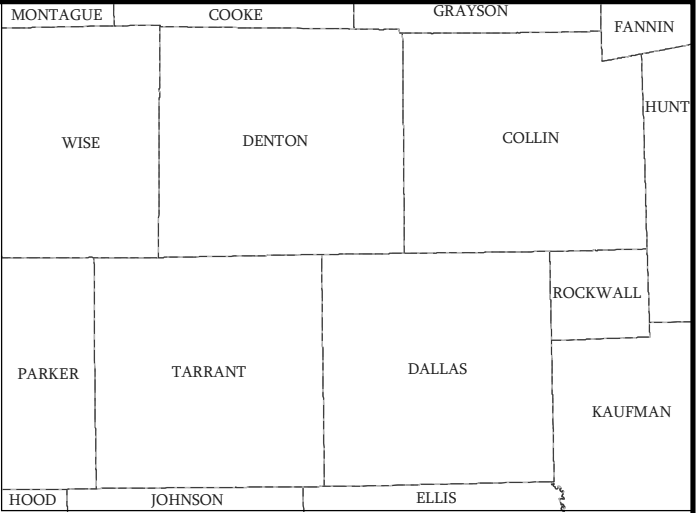
# State House Districts Proposed Plan PLANH2187



COUNTIES  

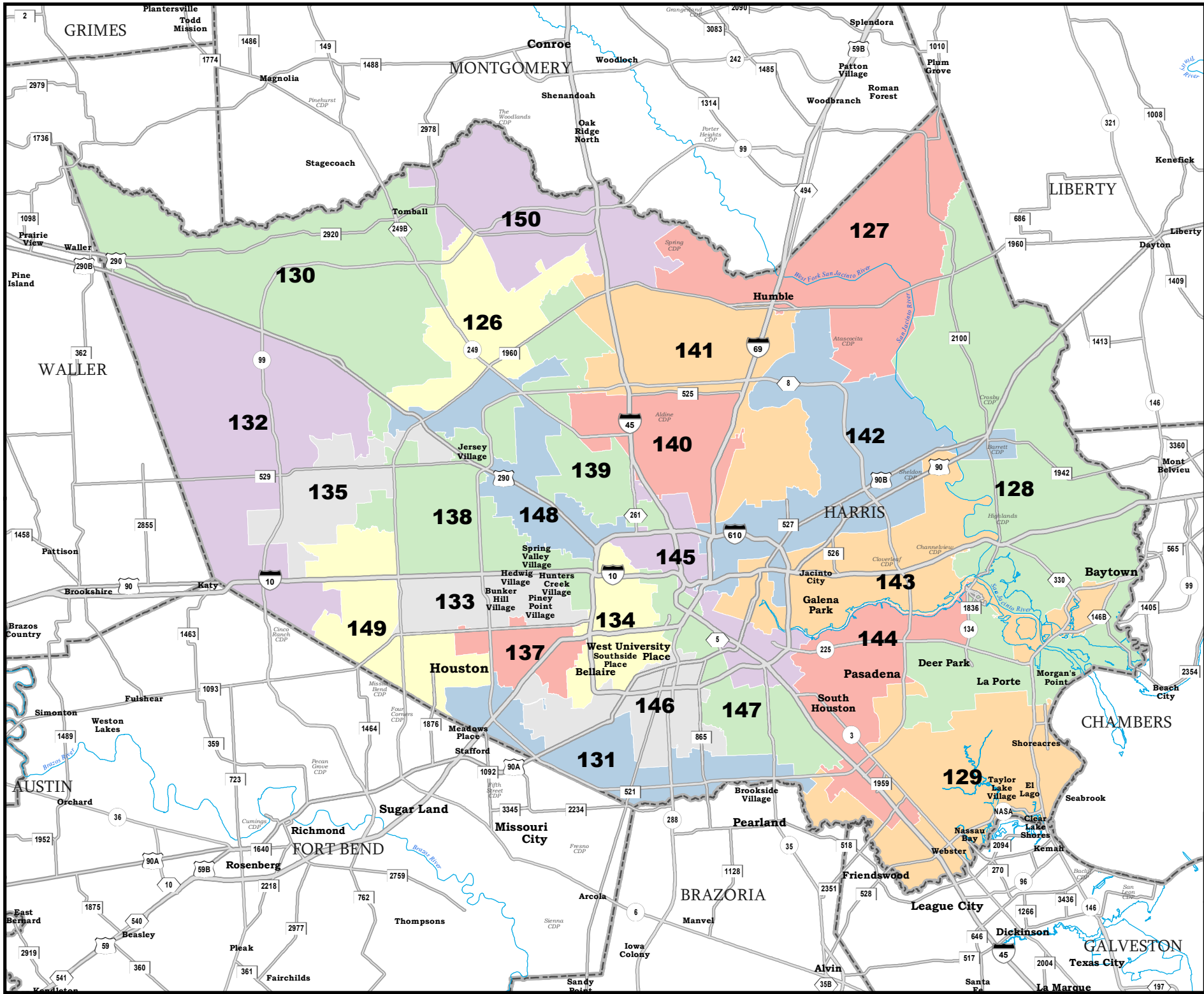


**PLANH2187**



Map ID 5900  
10/06/21 18:09:48

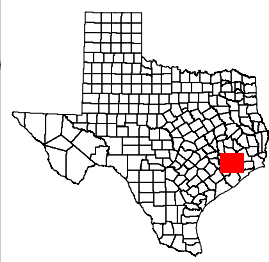




# HARRIS COUNTY

## State House Districts Proposed Plan PLANH2187

 COUNTIES  
 PLANH2187



Map ID 5900  
10/06/21 18:09:48



49138  
2020 Census  
PLANH2187 2021-10-06 17:59:54