

District Population Analysis with County Subtotals

CONGRESSIONAL DISTRICTS - PLAN2115

| | |
|---------------------------|------------|
| Total State Population | 29,145,505 |
| Total Districts Required | 38 |
| Ideal District Population | 766,987 |
| Unassigned Population | 26,844,124 |
| Districts in Plan | 3 |
| Unassigned Geography | Yes |
| Districts Contiguous | Yes |

| | Population | -----Deviation----- | |
|-----------------------|-------------------|----------------------------|----------------|
| | | Total | Percent |
| Plan Overall Range | | 13,604 | 1.78% |
| Smallest District (9) | 760,495 | -6,492 | -0.85% |
| Largest District (29) | 774,099 | 7,112 | 0.93% |
| Average (mean) | 767,127 | 4,601 | 0.60% |

PLAN2115

District Population Analysis with County Subtotals

CONGRESSIONAL DISTRICTS - PLAN2115

| | Deviation | | Total | Anglo | Non-Anglo | Asian | Black | Hispanic | B+H | %Anglo | %Non-Anglo | %Asian | %Black | %Hispanic | %B+H |
|--------------------|-----------|--------|---------|---------|-----------|--------|---------|----------|---------|--------|------------|--------|--------|-----------|------|
| DISTRICT 9 | -6,492 | Total: | 760,495 | 69,653 | 690,842 | 96,437 | 294,648 | 304,646 | 588,693 | 9.2 | 90.8 | 12.7 | 38.7 | 40.1 | 77.4 |
| | -0.85 % | VAP: | 568,178 | 60,353 | 507,825 | 78,985 | 218,529 | 211,967 | 424,279 | 10.6 | 89.4 | 13.9 | 38.5 | 37.3 | 74.7 |
| Fort Bend (20%) | | | 167,714 | 16,790 | 150,924 | 22,758 | 79,818 | 49,851 | 127,355 | 10.0 | 90.0 | 13.6 | 47.6 | 29.7 | 75.9 |
| Harris (13%) | | | 592,781 | 52,863 | 539,918 | 73,679 | 214,830 | 254,795 | 461,338 | 8.9 | 91.1 | 12.4 | 36.2 | 43.0 | 77.8 |
| DISTRICT 18 | -200 | Total: | 766,787 | 117,041 | 649,746 | 38,398 | 283,624 | 329,959 | 604,945 | 15.3 | 84.7 | 5.0 | 37.0 | 43.0 | 78.9 |
| | -0.03 % | VAP: | 575,769 | 102,776 | 472,993 | 31,810 | 213,356 | 227,208 | 435,916 | 17.9 | 82.1 | 5.5 | 37.1 | 39.5 | 75.7 |
| Harris (16%) | | | 766,787 | 117,041 | 649,746 | 38,398 | 283,624 | 329,959 | 604,945 | 15.3 | 84.7 | 5.0 | 37.0 | 43.0 | 78.9 |
| DISTRICT 29 | 7,112 | Total: | 774,099 | 73,069 | 701,030 | 25,349 | 101,577 | 577,046 | 671,019 | 9.4 | 90.6 | 3.3 | 13.1 | 74.5 | 86.7 |
| | 0.93 % | VAP: | 554,805 | 62,227 | 492,578 | 19,594 | 71,885 | 401,244 | 469,246 | 11.2 | 88.8 | 3.5 | 13.0 | 72.3 | 84.6 |
| Harris (16%) | | | 774,099 | 73,069 | 701,030 | 25,349 | 101,577 | 577,046 | 671,019 | 9.4 | 90.6 | 3.3 | 13.1 | 74.5 | 86.7 |

Population and Voter Data
 with Voter Registration Comparison

CONGRESSIONAL DISTRICTS - PLAN2115

| District | Deviation | | Population | | | | | | | General Election | Turnout | Total Voter Registration | | | Non-Suspense Voter Registration | | |
|----------|-----------|--------|------------|--------|------------|--------|--------|-----------|------|------------------|---------|--------------------------|--------|--------|---------------------------------|--------|--------|
| | | | Total | %Anglo | %Non-Anglo | %Asian | %Black | %Hispanic | %B+H | | | Total | SSVR | TO/VR | Total | SSVR | TO/VR |
| 9 | -6,492 | Total: | 760,495 | 9.2 | 90.8 | 12.7 | 38.7 | 40.1 | 77.4 | 2020 | 234,798 | 375,305 | 19.4 % | 62.6 % | 344,917 | 19.9 % | 68.1 % |
| | -0.85% | VAP: | 568,178 | 10.6 | 89.4 | 13.9 | 38.5 | 37.3 | 74.7 | 2018 | 171,178 | 357,315 | 18.5 % | 47.9 % | 322,672 | 19.2 % | 53.1 % |
| 18 | -200 | Total: | 766,787 | 15.3 | 84.7 | 5.0 | 37.0 | 43.0 | 78.9 | 2020 | 240,648 | 398,604 | 21.0 % | 60.4 % | 360,897 | 21.7 % | 66.7 % |
| | -0.03% | VAP: | 575,769 | 17.9 | 82.1 | 5.5 | 37.1 | 39.5 | 75.7 | 2018 | 178,753 | 381,897 | 19.9 % | 46.8 % | 341,206 | 20.6 % | 52.4 % |
| 29 | 7,112 | Total: | 774,099 | 9.4 | 90.6 | 3.3 | 13.1 | 74.5 | 86.7 | 2020 | 180,980 | 324,695 | 56.7 % | 55.7 % | 303,598 | 57.7 % | 59.6 % |
| | 0.93% | VAP: | 554,805 | 11.2 | 88.8 | 3.5 | 13.0 | 72.3 | 84.6 | 2018 | 132,362 | 309,369 | 56.0 % | 42.8 % | 285,263 | 57.3 % | 46.4 % |

For technical reasons, election results in Texas Legislative Council reports may vary slightly from the official election results. Complete official results for all elections are maintained by the Office of the Texas Secretary of State.
 SSVR = Spanish surname voter registration

Plan Fit Verification
CONGRESSIONAL DISTRICTS
PLANC2115 Compared with PLANC2116

The amendment DOES NOT FIT into the base plan.

The amendment affects districts in the base plan that are not in the amendment.

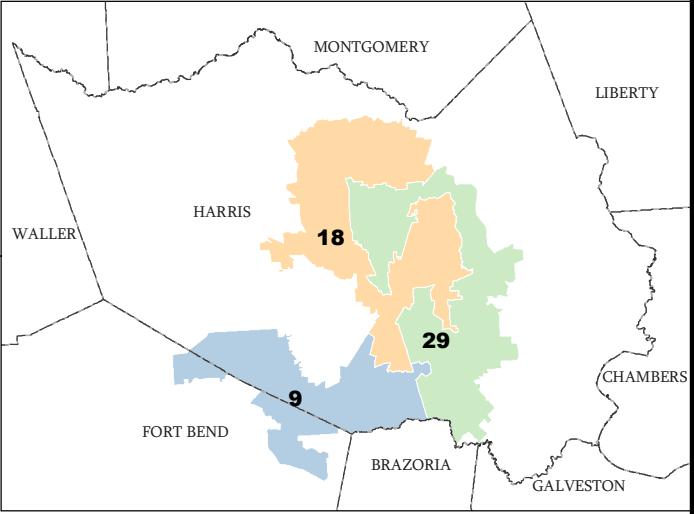
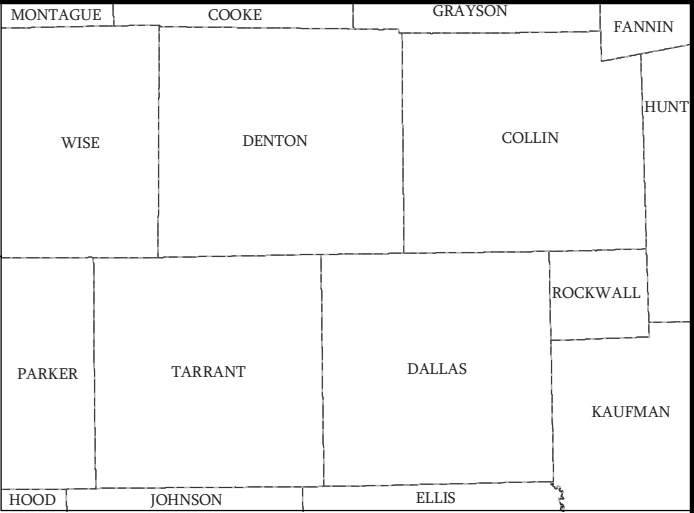
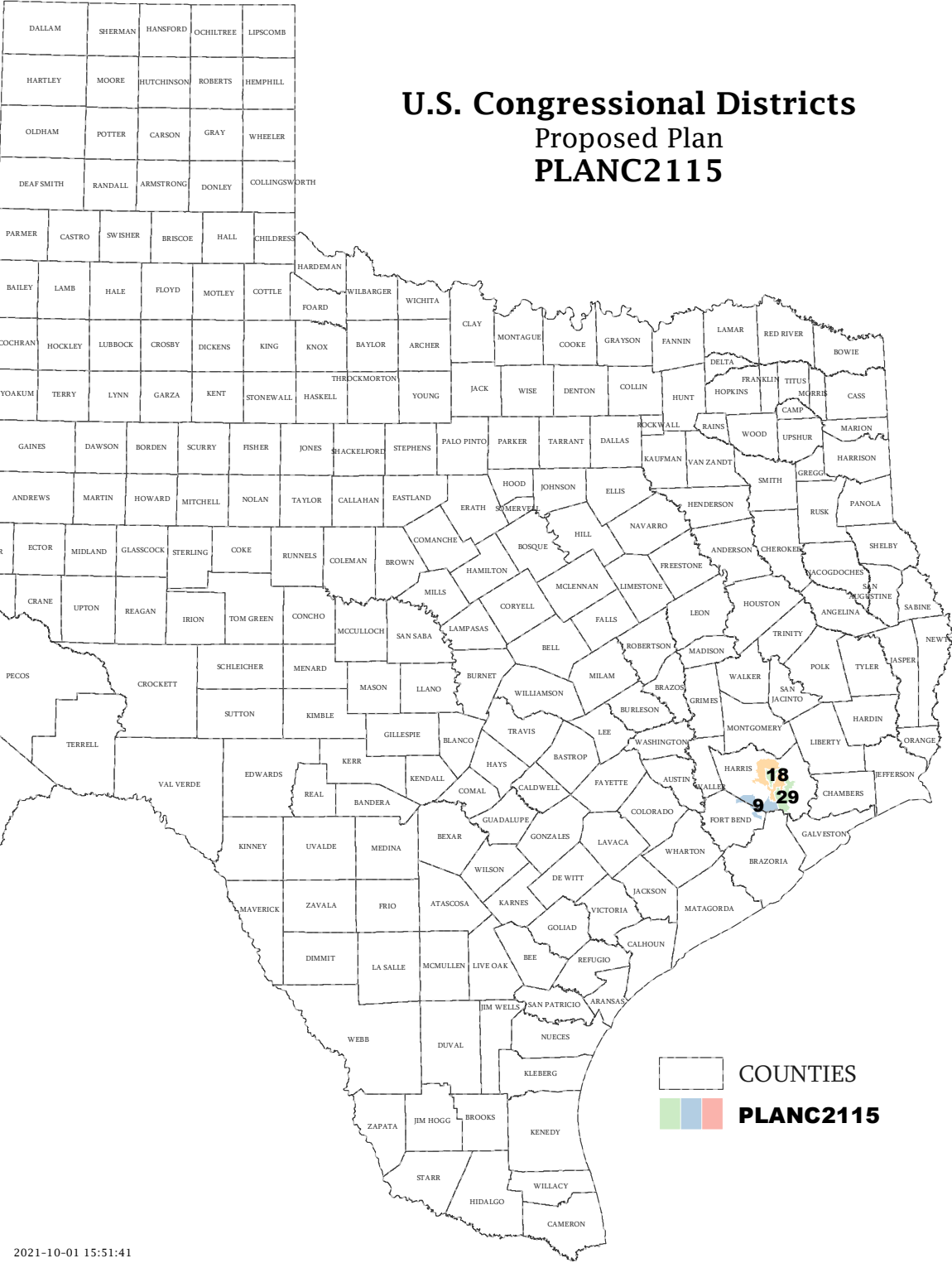
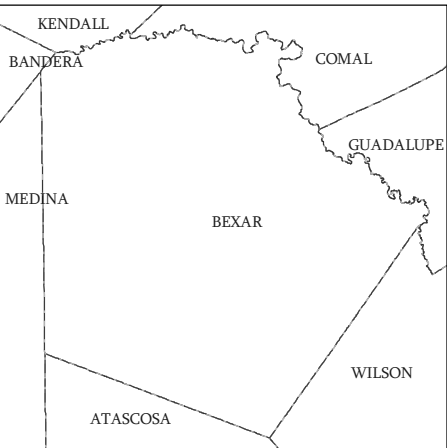
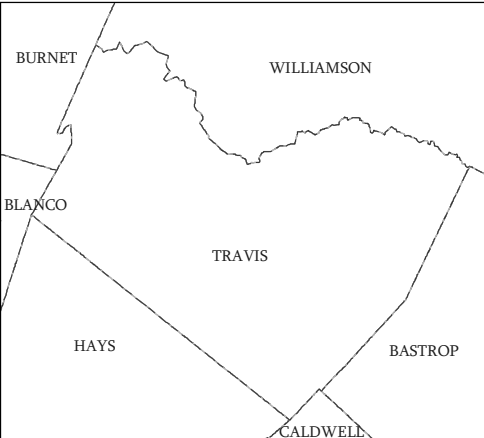
WARNING: The amendment unassigns 47821 blocks that were assigned in the base plan.

American Community Survey Special Tabulation Using Census and American Community Survey Data CONGRESSIONAL DISTRICTS - PLANC2115

| 2020 Census | | | Special Tabulation of Citizen Voting Age Population (CVAP) from the 2017-2021 American Community Survey with Margins of Error | | | | | | | | | | | | |
|-------------|---------|---------|---|-----------------------------|--|-----------------|---------------------------|---------------|-------------------------|---------------|-------------------------|---------------------------|-----------------|-----------------------------|--|
| | | | CVAP | Hispanic CVAP % Hispanic | Not Hispanic or Latino Citizen Voting Age Population (CVAP) | | | | | | | | | | |
| District | Total | VAP | | | % Black Alone | % Black + White | % Black + American Indian | % White Alone | % American Indian Alone | % Asian Alone | % Native Hawaiian Alone | % American Indian + White | % Asian + White | % Remainder 2 or More Other | |
| 9 | 760,495 | 568,178 | 424,025 (±8,490) | 27.3 (±1.0) | 44.9 (±1.1) | 0.7 (±0.2) | 0.2(±0.1) | 14.7 (±0.7) | 0.2 (±0.1) | 11.3 (±0.7) | 0.0 (±0.1) | 0.2 (±0.1) | 0.3 (±0.1) | 0.3 (±0.1) | |
| 18 | 766,787 | 575,769 | 456,195 (±8,712) | 29.3 (±0.9) | 42.9 (±1.1) | 0.5 (±0.1) | 0.2(±0.1) | 22.0 (±0.6) | 0.2 (±0.1) | 4.1 (±0.4) | 0.1 (±0.1) | 0.3 (±0.1) | 0.3 (±0.1) | 0.3 (±0.1) | |
| 29 | 774,099 | 554,805 | 400,065 (±7,916) | 65.2 (±1.1) | 15.2 (±0.8) | 0.3 (±0.1) | 0.1(±0.1) | 15.3 (±0.6) | 0.1 (±0.1) | 3.3 (±0.4) | 0.1 (±0.1) | 0.2 (±0.1) | 0.1 (±0.1) | 0.1 (±0.1) | |

The American Community Survey provided estimated citizen voting age population (CVAP) data at the block group level in a Special Tabulation. Because the MOE can only be calculated using whole block groups, all block groups with more than 50% of the population in a district are included in the analysis. The Red-118 report provides a summary of the block groups used in the analysis.
 The percent for each CVAP population category is that group's CVAP divided by the CVAP total.
 Numbers in parentheses are margins of error at 90% confidence level.

U.S. Congressional Districts Proposed Plan PLANC2115



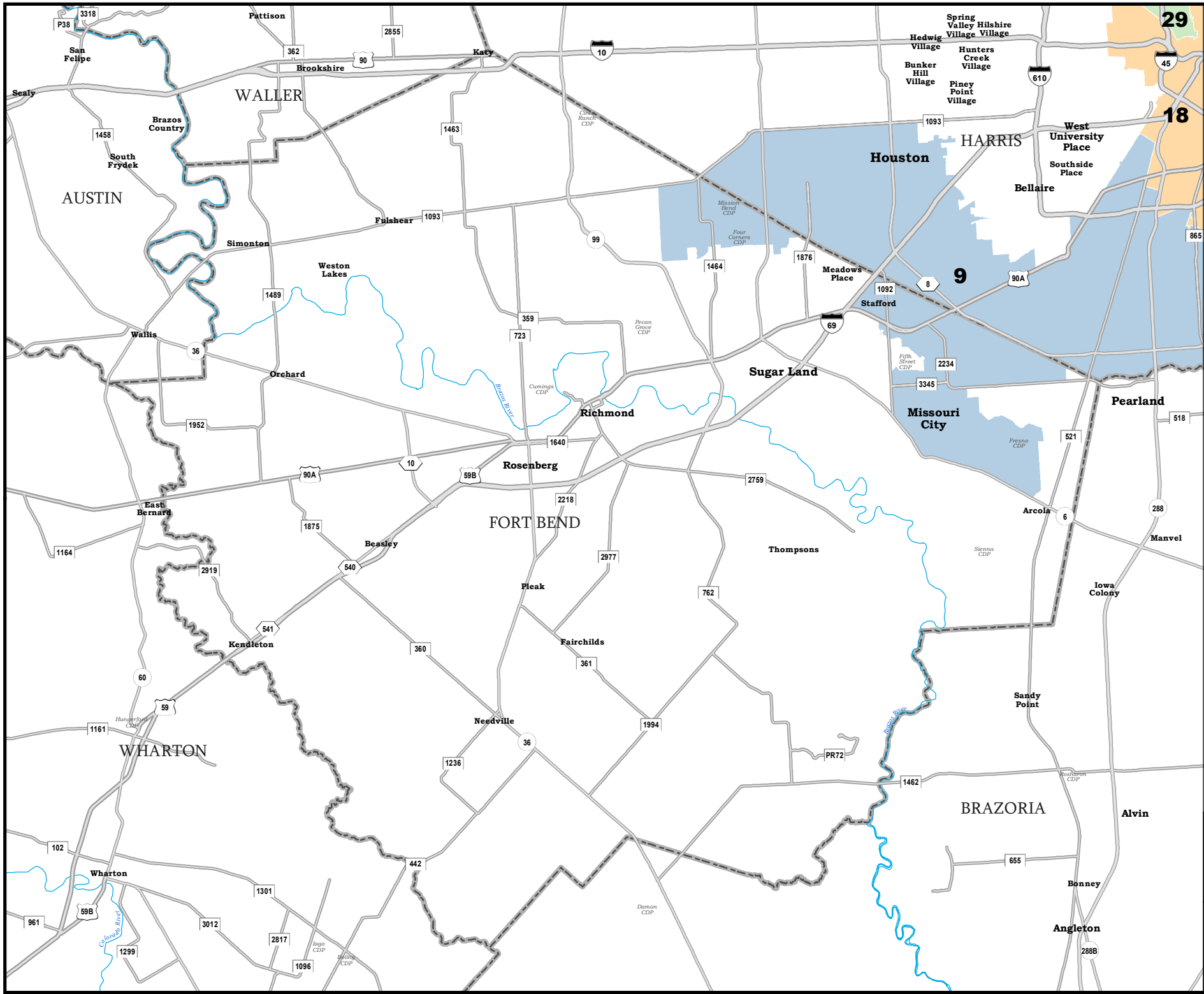
COUNTIES

 PLANC2115

Map ID 5900
10/01/21 15:59:04



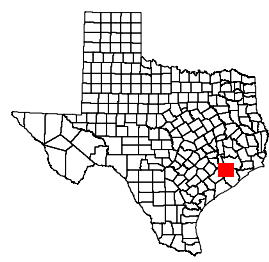
48666
2020 Census
PLANC2115 2021-10-01 15:51:41

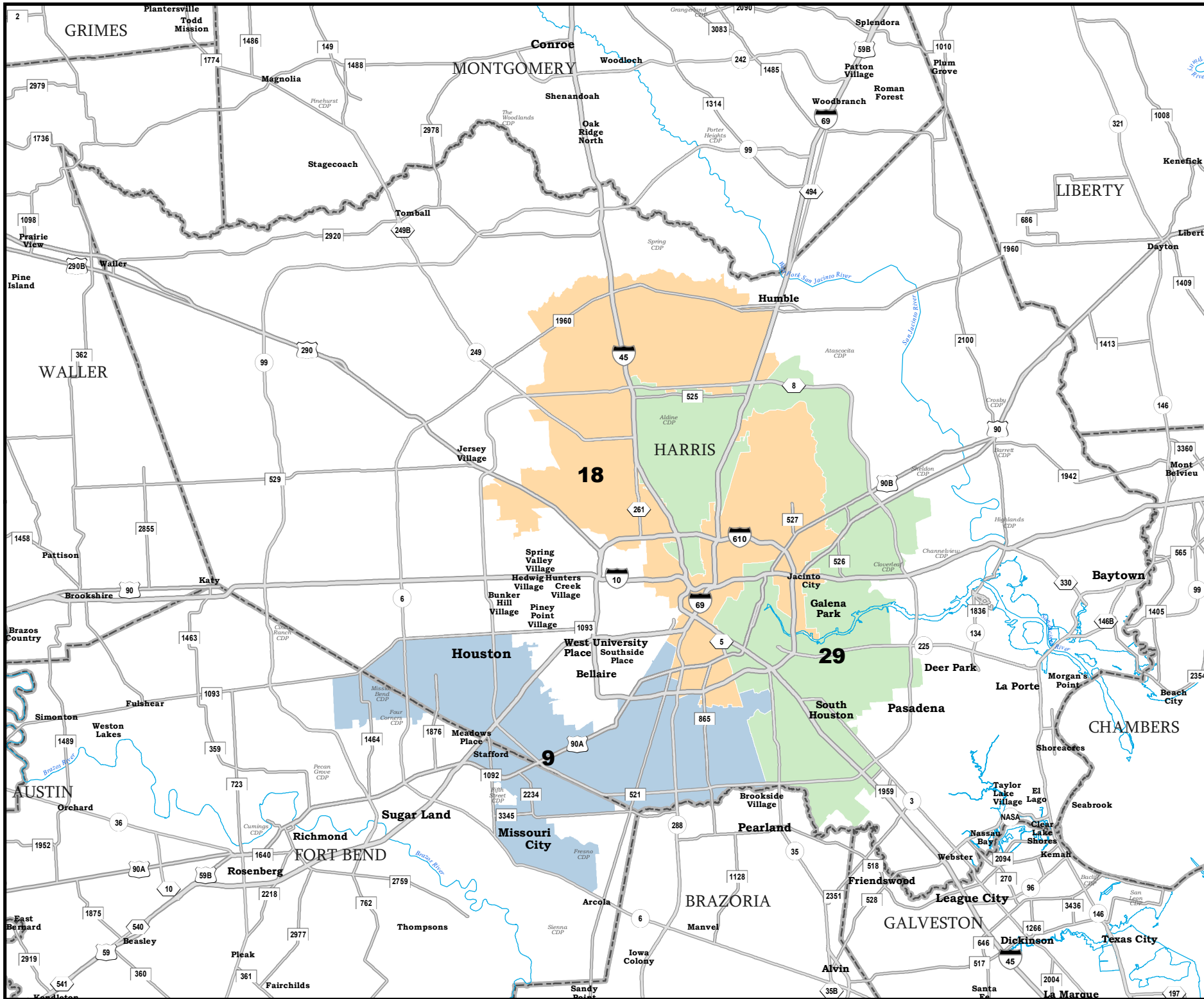


FORT BEND COUNTY

U.S. Congressional Districts Proposed Plan PLANC2115

 COUNTIES
 **PLANC2115**

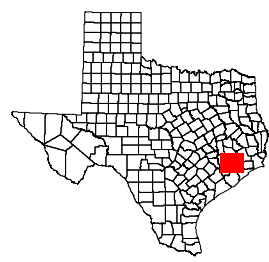





HARRIS COUNTY

U.S. Congressional Districts Proposed Plan PLANC2115

 COUNTIES
 **PLANC2115**



Map ID 5900
 10/01/21 15:59:04

 48666
 2020 Census
 PLANC2115 2021-10-01 15:51:41